


Anti-FKBP12 antibody [EP3887] ab108420

敲除验证 RabMAb

[2 References](#) [3 图像](#)

概述

产品名称	Anti-FKBP12抗体[EP3887]
描述	兔单克隆抗体[EP3887] to FKBP12
宿主	Rabbit
经测试应用	适用于: WB, ICC/IF 不适用于: Flow Cyt, IHC-P or IP
种属反应性	与反应: Human 预测可用于: Mouse, Rat 
免疫原	Synthetic peptide. This information is proprietary to Abcam and/or its suppliers.
阳性对照	WB: Fetal brain, HL-60, U937 and SH-SY5Y lysates; ICC: HeLa cells
常规说明	Our RabMAb [®] technology is a patented hybridoma-based technology for making rabbit monoclonal antibodies. For details on our patents, please refer to RabMAb[®] patents . The Life Science industry has been in the grips of a reproducibility crisis for a number of years. Abcam is leading the way in addressing this with our range of recombinant monoclonal antibodies and knockout edited cell lines for gold-standard validation. Please check that this product meets your needs before purchasing. If you have any questions, special requirements or concerns, please send us an inquiry and/or contact our Support team ahead of purchase. Recommended alternatives for this product can be found below, along with publications, customer reviews and Q&As

性能

形式	Liquid
存放说明	Shipped at 4°C. Store at -20°C. Stable for 12 months at -20°C.
存储溶液	pH: 7.20 Preservative: 0.05% Sodium azide Constituents: 0.1% BSA, 40% Glycerol (glycerin, glycerine), 9.85% Tris glycine, 50% Tissue culture supernatant
纯度	Tissue culture supernatant
克隆	单克隆

克隆编号 EP3887

同种型 IgG

应用

The Abpromise guarantee **Abpromise™**承诺保证使用ab108420于以下的经测试应用

“应用说明”部分 下显示的仅为推荐的起始稀释度;实际最佳的稀释度/浓度应由使用者检定。

应用	Ab评论	说明
WB		1/1000 - 1/10000. Predicted molecular weight: 12 kDa.
ICC/IF		1/50 - 1/100.

应用说明 Is unsuitable for Flow Cyt, IHC-P or IP.

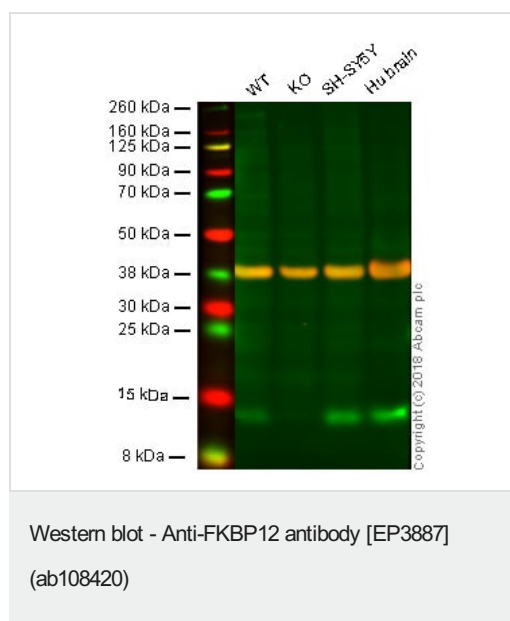
靶标

功能 May play a role in modulation of ryanodine receptor isoform-1 (RYR-1), a component of the calcium release channel of skeletal muscle sarcoplasmic reticulum. There are four molecules of FKBP12 per skeletal muscle RYR. PPlases accelerate the folding of proteins. It catalyzes the cis-trans isomerization of proline imidic peptide bonds in oligopeptides.

序列相似性 Belongs to the FKBP-type PPlase family. FKBP1 subfamily.
Contains 1 PPlase FKBP-type domain.

细胞定位 Cytoplasm.

图片



Lane 1: Wild-type HAP1 whole cell lysate (20 µg)

Lane 2: FKBP12 knockout HAP1 whole cell lysate (20 µg)

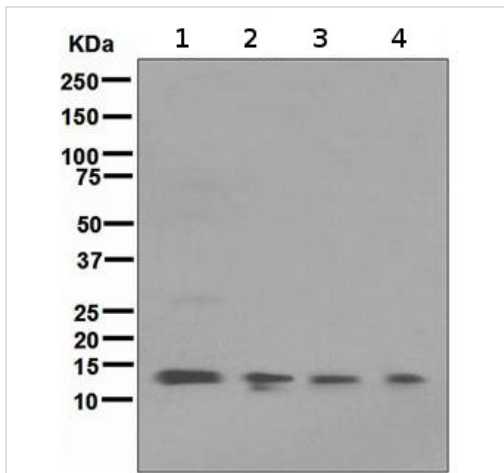
Lane 3: SH-SY5Y whole cell lysate (20 µg)

Lane 4: Human brain whole cell lysate (20 µg)

Lanes 1 - 4: Merged signal (red and green). Green - ab108420 observed at 12 kDa. Red - loading control, **ab9484**, observed at 37 kDa.

ab108420 was shown to recognize FKBP12 in wild-type HAP1 cells as signal was lost at the expected MW in FKBP12 knockout cells. Additional cross-reactive bands were observed in the wild-type and knockout cells. Wild-type and FKBP12 knockout samples were subjected to SDS-PAGE. Ab108420 and **ab9484** (Mouse anti-GAPDH loading control) were incubated overnight at 4°C at 1/1000 dilution and 1/20000 dilution respectively. Blots were developed with Goat anti-Rabbit IgG H&L (IRDye® 800CW) preabsorbed **ab216773** and Goat anti-Mouse IgG H&L (IRDye®

680RD) preabsorbed **ab216776** secondary antibodies at 1/20000 dilution for 1 hour at room temperature before imaging.



Western blot - Anti-FKBP12 antibody [EP3887] (ab108420)

All lanes : Anti-FKBP12 antibody [EP3887] (ab108420) at 1/1000 dilution

Lane 1 : Fetal brain lysate

Lane 2 : HL-60 (Human promyelocytic leukemia cell line) whole cell lysate

Lane 3 : U937 lysate

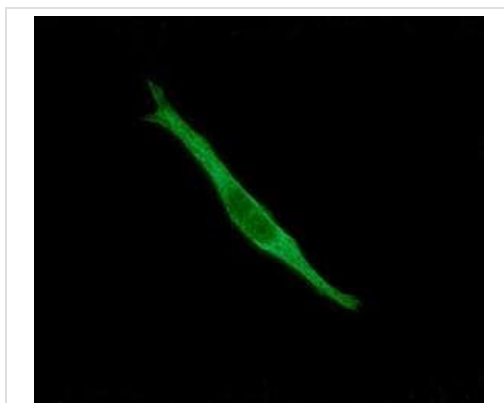
Lane 4 : SH-SY5Y lysate

Lysates/proteins at 10 µg per lane.

Secondary

All lanes : HRP labelled goat anti-rabbit at 1/2000 dilution

Predicted band size: 12 kDa



Immunocytochemistry/ Immunofluorescence - Anti-FKBP12 antibody [EP3887] (ab108420)

Immunofluorescent staining of FKBP12 in HeLa cells using ab108420 at 1/50 dilution.

Please note: All products are "FOR RESEARCH USE ONLY. NOT FOR USE IN DIAGNOSTIC PROCEDURES"

Our Abpromise to you: Quality guaranteed and expert technical support

- Replacement or refund for products not performing as stated on the datasheet
- Valid for 12 months from date of delivery
- Response to your inquiry within 24 hours
- We provide support in Chinese, English, French, German, Japanese and Spanish
- Extensive multi-media technical resources to help you
- We investigate all quality concerns to ensure our products perform to the highest standards

If the product does not perform as described on this datasheet, we will offer a refund or replacement. For full details of the Abpromise, please visit <https://www.abcam.cn/abpromise> or contact our technical team.

Terms and conditions

- Guarantee only valid for products bought direct from Abcam or one of our authorized distributors