


# FITC Anti-VCAM1 antibody [EPR5047] ab223982

**重组 RabMAb**

## 1 References 4 图像

### 概述

|       |  |
|-------|--|
| 产品名称  | FITC荧光Anti-VCAM1抗体[EPR5047]  |
| 描述    | FITC荧光兔单克隆抗体[EPR5047] to VCAM1   |
| 宿主    | Rabbit   |
| 偶联物   | FITC. Ex: 493nm, Em: 528nm   |
| 经测试应用 | 适用于: ICC/IF, Flow Cyt (Intra)  |
| 种属反应性 | 与反应: Mouse<br>预测可用于: Rat, Human   |
| 免疫原   | Synthetic peptide. This information is proprietary to Abcam and/or its suppliers.  |
| 阳性对照  | ICC/IF: NIH3T3 cells Flow Cyt (intra): NIH3T3 cells  |
| 常规说明  | This product is a recombinant monoclonal antibody, which offers several advantages including: <ul style="list-style-type: none"> <li>- High batch-to-batch consistency and reproducibility</li> <li>- Improved sensitivity and specificity</li> <li>- Long-term security of supply</li> <li>- Animal-free production</li> </ul> For more information <a href="#">see here</a> .<br>Our RabMAb <sup>®</sup> technology is a patented hybridoma-based technology for making rabbit monoclonal antibodies. For details on our patents, please refer to <a href="#">RabMAb<sup>®</sup> patents</a> . |

### 性能

|      |  |
|------|--|
| 形式   | Liquid   |
| 存放说明 | Shipped at 4°C. Store at +4°C short term (1-2 weeks). Upon delivery aliquot. Store at -20°C long term. Avoid freeze / thaw cycle. Store In the Dark. |
| 存储溶液 | pH: 7.40<br>Preservative: 0.02% Sodium azide<br>Constituents: 30% Glycerol (glycerin, glycerine), 1% BSA, PBS  |
| 纯度   | Protein A purified   |
| 克隆   | 单克隆  |
| 克隆编号 | EPR5047  |

## 应用

**The Abpromise guarantee** **Abpromise™**承诺保证使用ab223982于以下的经测试应用

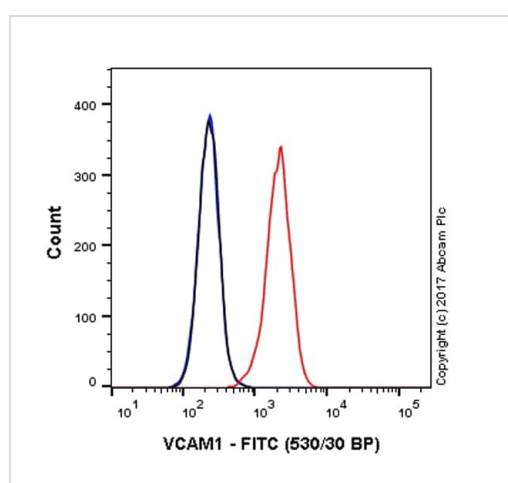
“应用说明”部分 下显示的仅为推荐的起始稀释度;实际最佳的稀释度/浓度应由使用者检定。

| 应用               | Ab评论 | 说明  |
|------------------|------|---|
| ICC/IF           |      | 1/100.<br>This product gave a positive signal in NIH3T3 cells fixed with 4% formaldehyde (10 min) and 100% methanol (5 min) |
| Flow Cyt (Intra) |      | 1/500.  |

## 靶标

|              |   |
|--------------|---|
| <b>功能</b>    | Important in cell-cell recognition. Appears to function in leukocyte-endothelial cell adhesion. Interacts with the beta-1 integrin VLA4 on leukocytes, and mediates both adhesion and signal transduction. The VCAM1/VLA4 interaction may play a pathophysiologic role both in immune responses and in leukocyte emigration to sites of inflammation. |
| <b>组织特异性</b> | Expressed on inflamed vascular endothelium, as well as on macrophage-like and dendritic cell types in both normal and inflamed tissue.  |
| <b>序列相似性</b> | Contains 7 Ig-like C2-type (immunoglobulin-like) domains.   |
| <b>结构域</b>   | Either the first or the fourth Ig-like C2-type domain is required for VLA4-dependent cell adhesion.   |
| <b>翻译后修饰</b> | Sialoglycoprotein.  |
| <b>细胞定位</b>  | Membrane.   |

## 图片



Flow Cytometry (Intracellular) - FITC Anti-VCAM1 antibody [EPR5047] (ab223982)

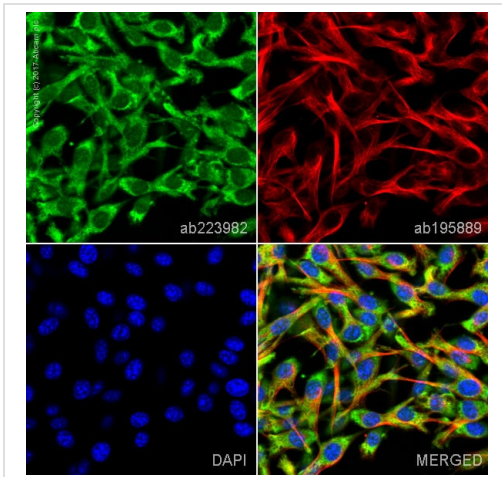
Overlay histogram showing NIH3T3 cells stained with ab223982 (red line). The cells were fixed with 80% methanol (5 min) and then permeabilized with 0.1% PBS-Triton X-100 for 15 min. The cells were then incubated in 1x PBS / 10% normal goat serum to block non-specific protein-protein interactions followed by the antibody (ab223982, 1/500 dilution) for 30 min at 22°C.

Isotype control antibody (black line) was Rabbit IgG (monoclonal) FITC (**ab223339**) used at the same concentration and conditions as the primary antibody. Unlabelled sample (blue line) was also used as a control.

Acquisition of >5,000 events were collected using a 50 mW Blue laser (488nm) and 530/30 bandpass filter.

This antibody gave a positive signal in NIH3T3 cells fixed with 4%

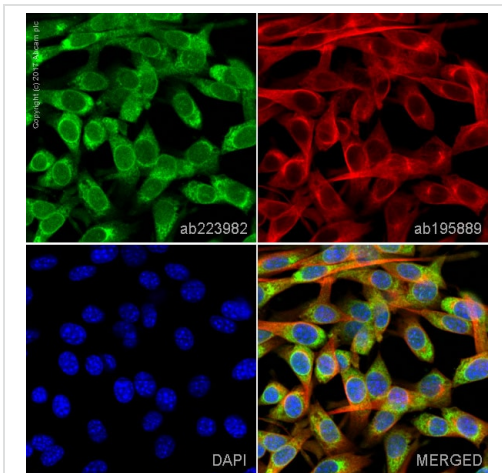
formaldehyde (10 min)/permeabilized with 0.1% PBS-Triton X-100 for 15 min used under the same conditions.



Immunocytochemistry/ Immunofluorescence - FITC  
Anti-VCAM1 antibody [EPR5047] (ab223982)

ab223982 staining VCAM1 in NIH3T3 cells. The cells were fixed with 100% methanol (5 min), permeabilized with 0.1% Triton X-100 for 5 minutes and then blocked with 1% BSA/10% normal goat serum/0.3M glycine in 0.1% PBS-Tween for 1h. The cells were then incubated overnight at +4°C with ab223982 at 1/100 dilution (shown in Green) and **ab195889**, Mouse monoclonal to alpha Tubulin (Alexa Fluor® 594), at 1/250 dilution (shown in red). Nuclear DNA was labelled with DAPI (shown in blue). Image was taken with a confocal microscope (Leica-Microsystems, TCS SP8).

This product also gave a positive signal under the same testing conditions in NIH3T3 cells fixed with 4% formaldehyde (10 min).







Immunocytochemistry/ Immunofluorescence - FITC  
Anti-VCAM1 antibody [EPR5047] (ab223982)

ab223982 staining VCAM1 in NIH3T3 cells. The cells were fixed with 4% formaldehyde (10 min), permeabilized with 0.1% Triton X-100 for 5 minutes and then blocked with 1% BSA/10% normal goat serum/0.3M glycine in 0.1% PBS-Tween for 1h. The cells were then incubated overnight at +4°C with ab223982 at 1/100 dilution (shown in Green) and **ab195889**, Mouse monoclonal to alpha Tubulin (Alexa Fluor® 594), at 1/250 dilution (shown in red). Nuclear DNA was labelled with DAPI (shown in blue). Image was taken with a confocal microscope (Leica-Microsystems, TCS SP8).

This product also gave a positive signal under the same testing conditions in NIH3T3 cells fixed with 100% methanol (5 min).

Why choose a recombinant antibody?

|  |  |
|--|--|
|  <p><b>Research with confidence</b><br/>Consistent and reproducible results</p> |  <p><b>Long-term and scalable supply</b><br/>Recombinant technology</p> |
|  <p><b>Success from the first experiment</b><br/>Confirmed specificity</p>      |  <p><b>Ethical standards compliant</b><br/>Animal-free production</p>   |

FITC Anti-VCAM1 antibody [EPR5047] (ab223982)

**Please note:** All products are "FOR RESEARCH USE ONLY. NOT FOR USE IN DIAGNOSTIC PROCEDURES"

### Our Abpromise to you: Quality guaranteed and expert technical support

---

- Replacement or refund for products not performing as stated on the datasheet
- Valid for 12 months from date of delivery
- Response to your inquiry within 24 hours
- We provide support in Chinese, English, French, German, Japanese and Spanish
- Extensive multi-media technical resources to help you
- We investigate all quality concerns to ensure our products perform to the highest standards

If the product does not perform as described on this datasheet, we will offer a refund or replacement. For full details of the Abpromise, please visit <https://www.abcam.cn/abpromise> or contact our technical team.

### Terms and conditions

---

- Guarantee only valid for products bought direct from Abcam or one of our authorized distributors