

### FITC Anti-PR3 antibody [PR3G-2] ab65255

**1 References**   [1 图像](#)

#### 概述

产品名称	FITC荧光Anti-PR3抗体[PR3G-2]
描述	FITC荧光小鼠单克隆抗体[PR3G-2] to PR3
宿主	Mouse
偶联物	FITC. Ex: 493nm, Em: 528nm
特异性	This antibody does not inhibit the biological activity of PR3.
经测试应用	<b>适用于:</b> Flow Cyt (Intra)
种属反应性	<b>与反应:</b> Human
免疫原	Tissue/ cell preparation (Human): a crude granule extract.
阳性对照	Flow Cyt (Intra): THP1 cells.
常规说明	<p>The Life Science industry has been in the grips of a reproducibility crisis for a number of years. Abcam is leading the way in addressing this with our range of recombinant monoclonal antibodies and knockout edited cell lines for gold-standard validation. Please check that this product meets your needs before purchasing.</p> <p>If you have any questions, special requirements or concerns, please send us an inquiry and/or contact our Support team ahead of purchase. Recommended alternatives for this product can be found below, along with publications, customer reviews and Q&amp;As</p>

#### 性能

形式	Liquid
存放说明	Shipped at 4°C. Store at +4°C.
存储溶液	Preservative: 0.02% Sodium azide Constituents: PBS, 1% BSA
纯度	Protein G purified
克隆	单克隆
克隆编号	PR3G-2
同种型	IgG1

#### 应用

## The Abpromise guarantee

**Abpromise™** 承诺保证使用ab65255于以下的经测试应用

“应用说明”部分 下显示的仅为推荐的起始稀释度;实际最佳的稀释度/浓度应由使用者检定。

应用	Ab评论	说明
Flow Cyt (Intra)		Use 0.5µg for 10 <sup>6</sup> cells. <b>ab91356</b> - Mouse monoclonal IgG1, is suitable for use as an isotype control with this antibody.

## 靶标

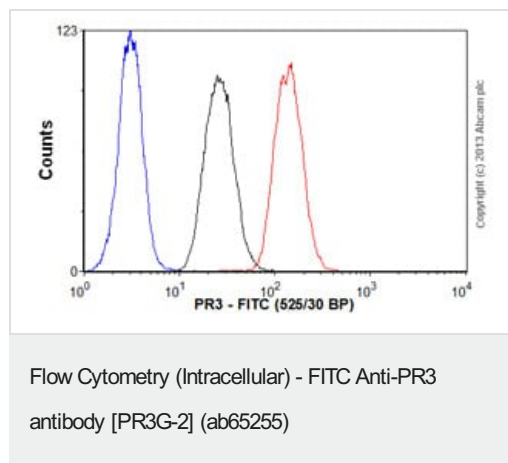
### 功能

Polymorphonuclear leukocyte serine protease that degrades elastin, fibronectin, laminin, vitronectin, and collagen types I, III, and IV (in vitro) and causes emphysema when administered by tracheal insufflation to hamsters.

### 序列相似性

Belongs to the peptidase S1 family. Elastase subfamily.  
Contains 1 peptidase S1 domain.

## 图片



Overlay histogram showing THP1 cells stained with ab65255 (red line). The cells were fixed with 80% methanol (5 min) and then permeabilized with 0.1% PBS-Tween for 20 min. The cells were then incubated in 1x PBS / 10% normal goat serum / 0.3M glycine to block non-specific protein-protein interactions followed by the antibody (ab65255, 0.5µg/1x10<sup>6</sup> cells) for 30 min at 22°C. Isotype control antibody (black line) was mouse IgG1 [MOPC-21] (FITC) (**ab18435**, 0.5µg/1x10<sup>6</sup> cells) used under the same conditions. Unlabelled sample (blue line). Acquisition of >5,000 events were collected using a 20mW Argon ion laser (488nm) and 525/30 bandpass filter.

**Please note:** All products are "FOR RESEARCH USE ONLY. NOT FOR USE IN DIAGNOSTIC PROCEDURES"

## Our Abpromise to you: Quality guaranteed and expert technical support

- Replacement or refund for products not performing as stated on the datasheet
- Valid for 12 months from date of delivery
- Response to your inquiry within 24 hours
- We provide support in Chinese, English, French, German, Japanese and Spanish
- Extensive multi-media technical resources to help you
- We investigate all quality concerns to ensure our products perform to the highest standards

If the product does not perform as described on this datasheet, we will offer a refund or replacement. For full details of the Abpromise,

please visit <https://www.abcam.cn/abpromise> or contact our technical team.

## **Terms and conditions**

---

- Guarantee only valid for products bought direct from Abcam or one of our authorized distributors