

FITC Anti-Myeloperoxidase antibody [2D4] ab90812

[25 References](#) [1 图像](#)

概述

产品名称	FITC荧光Anti-Myeloperoxidase抗体[2D4]
描述	FITC荧光小鼠单克隆抗体[2D4] to Myeloperoxidase
宿主	Mouse
偶联物	FITC. Ex: 493nm, Em: 528nm
经测试应用	适用于: Flow Cyt (Intra) 不适用于: IHC-P or WB
种属反应性	与反应: Mouse, Rat
免疫原	Full length native protein (purified). This information is proprietary to Abcam and/or its suppliers.
阳性对照	Flow Cyt (Intra): Wehi3BD+ cells.
常规说明	<p>The Life Science industry has been in the grips of a reproducibility crisis for a number of years. Abcam is leading the way in addressing this with our range of recombinant monoclonal antibodies and knockout edited cell lines for gold-standard validation. Please check that this product meets your needs before purchasing.</p> <p>If you have any questions, special requirements or concerns, please send us an inquiry and/or contact our Support team ahead of purchase. Recommended alternatives for this product can be found below, along with publications, customer reviews and Q&As</p>

性能

形式	Liquid
存放说明	Shipped at 4°C. Store at +4°C.
存储溶液	Preservative: 0.02% Sodium azide Constituents: PBS, 1% BSA
纯化说明	ab90812 is 0.2 µm filtered
克隆	单克隆
克隆编号	2D4
同种型	IgG1

应用

The Abpromise guarantee

Abpromise™承诺保证使用ab90812于以下的经测试应用

“应用说明”部分下显示的仅为推荐的起始稀释度;实际最佳的稀释度/浓度应由使用者检定。

应用	Ab评论	说明
Flow Cyt (Intra)		1/50. ab91356 - Mouse monoclonal IgG1, is suitable for use as an isotype control with this antibody.

应用说明

Is unsuitable for IHC-P or WB.

靶标

功能

Part of the host defense system of polymorphonuclear leukocytes. It is responsible for microbicidal activity against a wide range of organisms. In the stimulated PMN, MPO catalyzes the production of hypohalous acids, primarily hypochlorous acid in physiologic situations, and other toxic intermediates that greatly enhance PMN microbicidal activity.

疾病相关

Defects in MPO are the cause of myeloperoxidase deficiency (MPD) [MIM:254600]. MPD is an autosomal recessive defect that results in disseminated candidiasis.

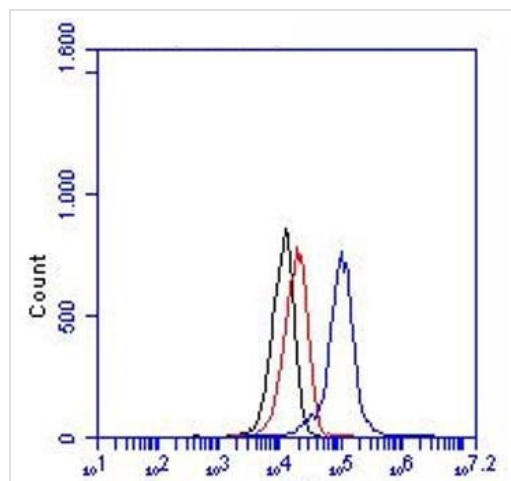
序列相似性

Belongs to the peroxidase family. XPO subfamily.

细胞定位

Lysosome.

图片



Detection of MPO in Wehi3BD+ cells. Red, black and blue line represent the isotype control, cells only and ab90812 at 20 µg/ml, respectively.

Flow Cytometry (Intracellular) - FITC Anti-Myeloperoxidase antibody [2D4] (ab90812)

Please note: All products are "FOR RESEARCH USE ONLY. NOT FOR USE IN DIAGNOSTIC PROCEDURES"

Our Abpromise to you: Quality guaranteed and expert technical support

- Replacement or refund for products not performing as stated on the datasheet

- Valid for 12 months from date of delivery
- Response to your inquiry within 24 hours

- We provide support in Chinese, English, French, German, Japanese and Spanish
- Extensive multi-media technical resources to help you
- We investigate all quality concerns to ensure our products perform to the highest standards

If the product does not perform as described on this datasheet, we will offer a refund or replacement. For full details of the Abpromise, please visit <https://www.abcam.cn/abpromise> or contact our technical team.

Terms and conditions

- Guarantee only valid for products bought direct from Abcam or one of our authorized distributors