


# FITC Anti-M6PR (cation independent) antibody [MEM-238] ab58841

★★★★★ 1 Abreviews 2 References 2 图像

### 概述

产品名称	FITC荧光Anti-M6PR (cation independent)抗体[MEM-238]
描述	FITC荧光小鼠单克隆抗体[MEM-238] to M6PR (cation independent)
宿主	Mouse
偶联物	FITC. Ex: 493nm, Em: 528nm
经测试应用	适用于: Flow Cyt, Flow Cyt (Intra)
种属反应性	与反应: Human 预测可用于: Non human primates 
免疫原	Tissue, cells or virus corresponding to Human M6PR (cation independent). Database link: <a href="#">P11717</a>
表位	ab58841 recognizes an epitope between domains 2 and 5 of Mannose 6 Phosphate Receptor (Cation independent) (CD222).
阳性对照	Flow Cyt: Human Peripheral whole blood, HeLa cells. Flow Cyt (Intra): HeLa Cells.
常规说明	<p>The purified antibody is conjugated with Fluorescein isothiocyanate (FITC) under optimum conditions. The reagent is free of unconjugated FITC and adjusted for direct use.</p> <p>The Life Science industry has been in the grips of a reproducibility crisis for a number of years. Abcam is leading the way in addressing this with our range of recombinant monoclonal antibodies and knockout edited cell lines for gold-standard validation. Please check that this product meets your needs before purchasing.</p> <p>If you have any questions, special requirements or concerns, please send us an inquiry and/or contact our Support team ahead of purchase. Recommended alternatives for this product can be found below, along with publications, customer reviews and Q&amp;As</p>

### 性能

形式	Liquid
存放说明	Shipped at 4°C. Store at +4°C.
存储溶液	pH: 7.4 Preservative: 0.097% Sodium azide Constituents: PBS, 0.2% BSA

纯度	Size exclusion
纯化说明	The purified antibody is conjugated with fluorescein isothiocyanate (FITC) under optimum conditions. The conjugate is purified by size-exclusion chromatography.
克隆	单克隆
克隆编号	MEM-238
同种型	IgG1

应用

**The Abpromise guarantee**      **Abpromise™**承诺保证使用ab58841于以下的经测试应用

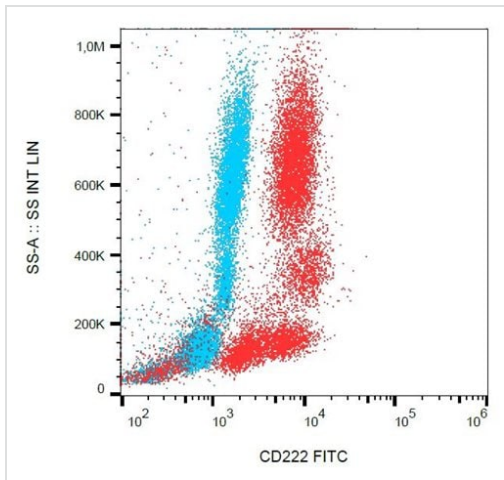
“应用说明”部分 下显示的仅为推荐的起始稀释度;实际最佳的稀释度/浓度应由使用者检定。

应用	Ab评论	说明
Flow Cyt		Use 8.3µl for 10 <sup>6</sup> cells. <b>ab91356</b> - Mouse monoclonal IgG1, is suitable for use as an isotype control with this antibody.
Flow Cyt (Intra)		Use 1µg for 10 <sup>6</sup> cells. <b>ab91356</b> - Mouse monoclonal IgG1, is suitable for use as an isotype control with this antibody.

靶标

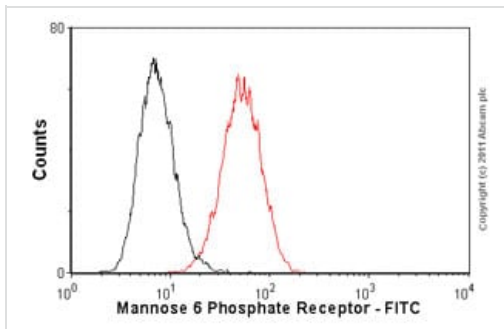
功能	Transport of phosphorylated lysosomal enzymes from the Golgi complex and the cell surface to lysosomes. Lysosomal enzymes bearing phosphomannosyl residues bind specifically to mannose-6-phosphate receptors in the Golgi apparatus and the resulting receptor-ligand complex is transported to an acidic prelysosomal compartment where the low pH mediates the dissociation of the complex. This receptor also binds IGF2. Acts as a positive regulator of T-cell coactivation, by binding DPP4.
序列相似性	Belongs to the MRL1/IGF2R family. Contains 1 fibronectin type-II domain.
结构域	Contains 15 repeating units of approximately 147 AA harboring four disulfide bonds each. The most highly conserved region within the repeat consists of a stretch of 13 AA that contains cysteines at both ends.
细胞定位	Lysosome membrane. Colocalized with DPP4 in internalized cytoplasmic vesicles adjacent to the cell surface.

图片



Flow Cytometry - FITC Anti-M6PR (cation independent) antibody [MEM-238] (ab58841)

Flow cytometry surface staining pattern of human peripheral whole blood stained using anti-human CD222 (MEM-238) FITC antibody (ab58841) (red, concentration in sample 3  $\mu\text{g/ml}$ ) and mouse IgG1 isotype control (MOPC-21) FITC antibody (blue, concentration in sample 3  $\mu\text{g/ml}$ ).



Flow Cytometry (Intracellular) - FITC Anti-M6PR (cation independent) antibody [MEM-238] (ab58841)

Overlay histogram showing HeLa cells stained with ab58841 (red line). The cells were fixed with 80% methanol (5 min) and then permeabilized with 0.1% PBS-Tween for 20 min. The cells were then incubated in 1x PBS / 10% normal goat serum / 0.3M glycine to block non-specific protein-protein interactions followed by the antibody (ab58841, 1  $\mu\text{g}/1 \times 10^6$  cells) for 30 min at 22°C. Isotype control antibody (black line) was mouse IgG1 (1  $\mu\text{g}/1 \times 10^6$  cells). Acquisition of >5,000 events was performed. This antibody gave a positive signal in HeLa cells fixed with 4% paraformaldehyde/permeabilized in 0.1% PBS-Tween used under the same conditions.

**Please note:** All products are "FOR RESEARCH USE ONLY. NOT FOR USE IN DIAGNOSTIC PROCEDURES"

### Our Abpromise to you: Quality guaranteed and expert technical support

- Replacement or refund for products not performing as stated on the datasheet
- Valid for 12 months from date of delivery
- Response to your inquiry within 24 hours
- We provide support in Chinese, English, French, German, Japanese and Spanish
- Extensive multi-media technical resources to help you
- We investigate all quality concerns to ensure our products perform to the highest standards

If the product does not perform as described on this datasheet, we will offer a refund or replacement. For full details of the Abpromise, please visit <https://www.abcam.cn/abpromise> or contact our technical team.

#### **Terms and conditions**

---

- Guarantee only valid for products bought direct from Abcam or one of our authorized distributors