

FITC Anti-F4/80 antibody [Cl:A3-1] ab105155

15 References **2 图像**

概述

产品名称	FITC荧光Anti-F4/80抗体[Cl:A3-1]
描述	FITC荧光大鼠单克隆抗体[Cl:A3-1] to F4/80
宿主	Rat
偶联物	FITC. Ex: 493nm, Em: 528nm
特异性	ab105155 recognises the murine F4/80 antigen.
经测试应用	适用于: Flow Cyt
种属反应性	与反应: Mouse
免疫原	Tissue, cells or virus corresponding to Mouse F4/80. Thioglycollate stimulated peritoneal macrophages from C57/BL mice. Database link: Q61549
阳性对照	Mouse peritoneal macrophages
常规说明	<p>Clone Cl:A3-1 has been reported to modulate cytokine levels released in response to Listeria monocytogenes.</p> <p>The Life Science industry has been in the grips of a reproducibility crisis for a number of years. Abcam is leading the way in addressing this with our range of recombinant monoclonal antibodies and knockout edited cell lines for gold-standard validation. Please check that this product meets your needs before purchasing.</p> <p>If you have any questions, special requirements or concerns, please send us an inquiry and/or contact our Support team ahead of purchase. Recommended alternatives for this product can be found below, along with publications, customer reviews and Q&As</p>

性能

形式	Liquid
存放说明	Shipped at 4°C. Store at +4°C.
存储溶液	pH: 7.40 Preservative: 0.09% Sodium azide Constituents: 1% BSA, PBS
纯度	Protein G purified

Primary antibody说明	Clone Cl:A3-1 has been reported to modulate cytokine levels released in response to Listeria monocytogenes.
克隆	单克隆
克隆编号	Cl:A3-1
骨髓瘤	NS1
同种型	IgG2b
轻链类型	kappa

应用

The Abpromise guarantee

Abpromise™承诺保证使用ab105155于以下的经测试应用

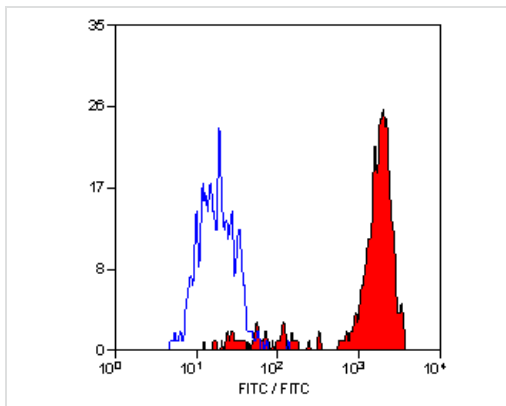
“应用说明”部分 下显示的仅为推荐的起始稀释度;实际最佳的稀释度/浓度应由使用者检定。

应用	Ab评论	说明
Flow Cyt		Use 10µl for 10 ⁶ cells. in 100ul. ab136125 - Rat monoclonal IgG2b, is suitable for use as an isotype control with this antibody.

靶标

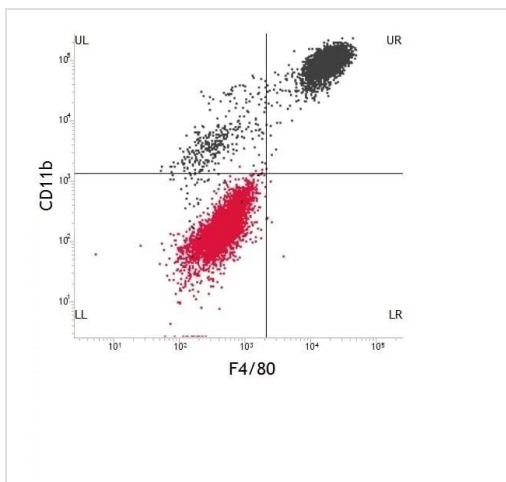
功能	Orphan receptor involved in cell adhesion and probably in cell-cell interactions specifically involving cells of the immune system. May play a role in regulatory T-cells (Treg) development.
组织特异性	Expression is restricted to eosinophils.
序列相似性	Belongs to the G-protein coupled receptor 2 family. Adhesion G-protein coupled receptor (ADGR) subfamily. Contains 6 EGF-like domains. Contains 1 GPS domain.
细胞定位	Cell membrane.

图片



Flow Cytometry - FITC Anti-F4/80 antibody [Cl:A3-1]
(ab105155)

Flow cytometry staining of mouse peritoneal macrophages with ab105155.



Flow Cytometry - FITC Anti-F4/80 antibody [Cl:A3-1]
(ab105155)

FSC/SSC gated mouse peritoneal macrophages dual stained with ab105155 at 1/5 dilution and anti-CD11b at 1/5 dilution by Flow cytometry. Isotype control pair in red. Fc receptors were blocked.

Please note: All products are "FOR RESEARCH USE ONLY. NOT FOR USE IN DIAGNOSTIC PROCEDURES"

Our Abpromise to you: Quality guaranteed and expert technical support

- Replacement or refund for products not performing as stated on the datasheet
- Valid for 12 months from date of delivery
- Response to your inquiry within 24 hours
- We provide support in Chinese, English, French, German, Japanese and Spanish
- Extensive multi-media technical resources to help you
- We investigate all quality concerns to ensure our products perform to the highest standards

If the product does not perform as described on this datasheet, we will offer a refund or replacement. For full details of the Abpromise, please visit <https://www.abcam.cn/abpromise> or contact our technical team.

Terms and conditions

- Guarantee only valid for products bought direct from Abcam or one of our authorized distributors