

FITC Anti-CD42a/GP-IX antibody [GR-P], prediluted ab194810

1 图像

概述

| | |
|--------------|---|
| 产品名称 | FITC荧光Anti-CD42a/GP-IX抗体[GR-P], prediluted |
| 描述 | FITC荧光小鼠单克隆抗体[GR-P] to CD42a/GP-IX, prediluted |
| 宿主 | Mouse |
| 偶联物 | FITC. Ex: 493nm, Em: 528nm |
| 经测试应用 | 适用于: Flow Cyt |
| 种属反应性 | 与反应: Human |
| 免疫原 | Tissue, cells or virus corresponding to Human CD42a/GP-IX. (Human acute lymphoblastic leukemia cells). |
| 常规说明 | <p>The Life Science industry has been in the grips of a reproducibility crisis for a number of years. Abcam is leading the way in addressing this with our range of recombinant monoclonal antibodies and knockout edited cell lines for gold-standard validation. Please check that this product meets your needs before purchasing.</p> <p>If you have any questions, special requirements or concerns, please send us an inquiry and/or contact our Support team ahead of purchase. Recommended alternatives for this product can be found below, along with publications, customer reviews and Q&As</p> |

性能

| | |
|-------------|--|
| 形式 | Liquid |
| 存放说明 | Shipped at 4°C. Store at +4°C. Store In the Dark. |
| 存储溶液 | pH: 7.4 Preservative: 0.097% Sodium azide Constituents: 99% PBS, 0.2% BSA |
| 纯度 | Size exclusion |
| 纯化说明 | Purified antibody is conjugated with Fluorescein isothiocyanate (FITC) under optimum conditions. The reagent is free of unconjugated FITC and adjusted for direct use. No reconstitution is necessary. |
| 克隆 | 单克隆 |
| 克隆编号 | GR-P |
| 同种型 | IgG1 |

应用

The Abpromise guarantee

Abpromise™ 承诺保证使用 ab194810 于以下的经测试应用

“应用说明”部分 下显示的仅为推荐的起始稀释度;实际最佳的稀释度/浓度应由使用者检定。

| 应用 | Ab评论 | 说明 |
|----------|------|---|
| Flow Cyt | | Use 4µl for 10 ⁶ cells. (or 100 µl of whole blood). |

靶标

功能

The GPIb-V-IX complex functions as the vWF receptor and mediates vWF-dependent platelet adhesion to blood vessels. The adhesion of platelets to injured vascular surfaces in the arterial circulation is a critical initiating event in hemostasis. GP-IX may provide for membrane insertion and orientation of GP-Ib.

疾病相关

Defects in GP9 are a cause of Bernard-Soulier syndrome (BSS) [MIM:231200]; also known as giant platelet disease (GPD). BSS patients have unusually large platelets and have a clinical bleeding tendency.

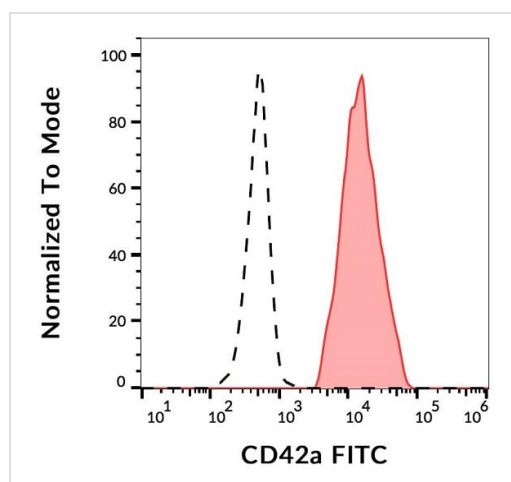
序列相似性

Contains 1 LRR (leucine-rich) repeat.
Contains 1 LRRCT domain.
Contains 1 LRRNT domain.

细胞定位

Membrane.

图片



Surface staining of human platelets with ab194810.

Flow Cytometry - FITC Anti-CD42a/GP-IX antibody
[GR-P], prediluted (ab194810)

Please note: All products are "FOR RESEARCH USE ONLY. NOT FOR USE IN DIAGNOSTIC PROCEDURES"

Our Abpromise to you: Quality guaranteed and expert technical support

- Replacement or refund for products not performing as stated on the datasheet
- Valid for 12 months from date of delivery
- Response to your inquiry within 24 hours

- We provide support in Chinese, English, French, German, Japanese and Spanish
- Extensive multi-media technical resources to help you
- We investigate all quality concerns to ensure our products perform to the highest standards

If the product does not perform as described on this datasheet, we will offer a refund or replacement. For full details of the Abpromise, please visit <https://www.abcam.cn/abpromise> or contact our technical team.

Terms and conditions

- Guarantee only valid for products bought direct from Abcam or one of our authorized distributors