

FITC Anti-CD11b antibody [M1/70] ab24874

★★★★★ [3 Abreviews](#) [14 References](#) [1 图像](#)

概述

产品名称	FITC荧光Anti-CD11b抗体[M1/70]
描述	FITC荧光大鼠单克隆抗体[M1/70] to CD11b
宿主	Rat
偶联物	FITC. Ex: 493nm, Em: 528nm
特异性	Alpha M subunit (Mr 170 kDa) of the CD11b/CD18 heterodimer.
经测试应用	适用于: Flow Cyt
种属反应性	与反应: Mouse 预测可用于: Human 
免疫原	Tissue/ cell preparation (Mouse): C57BL/10 mouse splenic T cells and concanavaline A-activated C57BL/10 splenocytes.
阳性对照	Flow Cyt: Mouse C57BL/6 bone marrow cells.
常规说明	<p>The Life Science industry has been in the grips of a reproducibility crisis for a number of years. Abcam is leading the way in addressing this with our range of recombinant monoclonal antibodies and knockout edited cell lines for gold-standard validation. Please check that this product meets your needs before purchasing.</p> <p>If you have any questions, special requirements or concerns, please send us an inquiry and/or contact our Support team ahead of purchase. Recommended alternatives for this product can be found below, along with publications, customer reviews and Q&As</p>

性能

形式	Liquid
存放说明	Shipped at 4°C. Store at +4°C. Do Not Freeze. Store undiluted.
存储溶液	<p>pH: 7.20</p> <p>Preservative: 0.09% Sodium azide</p> <p>Constituents: 0.14% Monobasic dihydrogen sodium phosphate, 0.87% Sodium chloride, 0.1% Gelatin</p>
纯度	Affinity purified
克隆	单克隆
克隆编号	M1/70

同种型	IgG2b
轻链类型	kappa

应用

The Abpromise guarantee **Abpromise™**承诺保证使用ab24874于以下的经测试应用

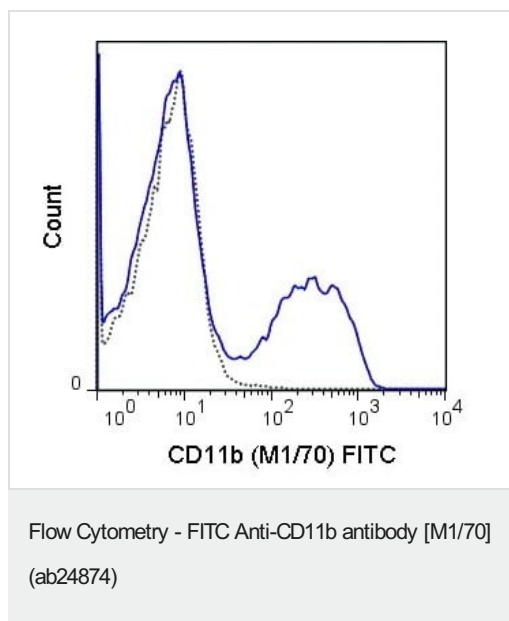
“应用说明”部分 下显示的仅为推荐的起始稀释度;实际最佳的稀释度/浓度应由使用者检定。

应用	Ab评论	说明
Flow Cyt	★★★★★ (1)	Use at an assay dependent concentration. ab136125 - Rat monoclonal IgG2b, is suitable for use as an isotype control with this antibody.

靶标

功能	Integrin alpha-M/beta-2 is implicated in various adhesive interactions of monocytes, macrophages and granulocytes as well as in mediating the uptake of complement-coated particles. It is identical with CR-3, the receptor for the iC3b fragment of the third complement component. It probably recognizes the R-G-D peptide in C3b. Integrin alpha-M/beta-2 is also a receptor for fibrinogen, factor X and ICAM1. It recognizes P1 and P2 peptides of fibrinogen gamma chain.
组织特异性	Predominantly expressed in monocytes and granulocytes.
疾病相关	Genetic variations in ITGAM has been associated with susceptibility to systemic lupus erythematosus type 6 (SLEB6) [MIM:609939]. Systemic lupus erythematosus (SLE) is a chronic, inflammatory and often febrile multisystemic disorder of connective tissue. It affects principally the skin, joints, kidneys and serosal membranes. It is thought to represent a failure of the regulatory mechanisms of the autoimmune system.
序列相似性	Belongs to the integrin alpha chain family. Contains 7 FG-GAP repeats. Contains 1 VWFA domain.
结构域	The integrin I-domain (insert) is a VWFA domain. Integrins with I-domains do not undergo protease cleavage.
细胞定位	Membrane.

图片



Flow Cytometry analysis of Mouse C57BL/6 bone marrow cells labeling CD11b with ab24874 at 0.5 μ g (solid line), Rat IgG2b (FITC) isotype control (dashed line) at 0.5 μ g concentration.

Please note: All products are "FOR RESEARCH USE ONLY. NOT FOR USE IN DIAGNOSTIC PROCEDURES"

Our Abpromise to you: Quality guaranteed and expert technical support

- Replacement or refund for products not performing as stated on the datasheet
- Valid for 12 months from date of delivery
- Response to your inquiry within 24 hours
- We provide support in Chinese, English, French, German, Japanese and Spanish
- Extensive multi-media technical resources to help you
- We investigate all quality concerns to ensure our products perform to the highest standards

If the product does not perform as described on this datasheet, we will offer a refund or replacement. For full details of the Abpromise, please visit <https://www.abcam.cn/abpromise> or contact our technical team.

Terms and conditions

- Guarantee only valid for products bought direct from Abcam or one of our authorized distributors