

Anti-Firefly Luciferase antibody [EPR17790] ab185924

重组 RabMAb

★★★★☆ **4 Abreviews** **13 References** **6 图像**

概述

| | |
|-------|---|
| 产品名称 | Anti-Firefly Luciferase抗体[EPR17790] |
| 描述 | 兔单克隆抗体[EPR17790] to Firefly Luciferase |
| 宿主 | Rabbit |
| 经测试应用 | 适用于: Flow Cyt, ICC/IF, WB |
| 种属反应性 | 与反应: Firefly |
| 免疫原 | Synthetic peptide. This information is proprietary to Abcam and/or its suppliers. |
| 阳性对照 | WB: Firefly Luciferase transfected HEK293 whole cell lysate. ICC/IF: Firefly Luciferase transfected HEK293T cells. |
| 常规说明 | <p>This product is a recombinant monoclonal antibody, which offers several advantages including:</p> <ul style="list-style-type: none"> - High batch-to-batch consistency and reproducibility - Improved sensitivity and specificity - Long-term security of supply - Animal-free production <p>For more information see here.</p> <p>Our RabMAb[®] technology is a patented hybridoma-based technology for making rabbit monoclonal antibodies. For details on our patents, please refer to RabMAb[®] patents.</p> |

性能

| | |
|------|---|
| 形式 | Liquid |
| 存放说明 | Shipped at 4°C. Store at +4°C short term (1-2 weeks). Upon delivery aliquot. Store at -20°C long term. Avoid freeze / thaw cycle. |
| 存储溶液 | <p>pH: 7.2</p> <p>Preservative: 0.01% Sodium azide</p> <p>Constituents: 59% PBS, 0.05% BSA, 40% Glycerol</p> |
| 纯度 | Protein A purified |
| 克隆 | 单克隆 |
| 克隆编号 | EPR17790 |
| 同种型 | IgG |

应用

The Abpromise guarantee

Abpromise™ 承诺保证使用 ab185924 于以下的经测试应用

“应用说明”部分 下显示的仅为推荐的起始稀释度;实际最佳的稀释度/浓度应由使用者检定。

| 应用 | Ab 评论 | 说明 |
|----------|-----------|---|
| Flow Cyt | | Use at an assay dependent concentration. |
| ICC/IF | ★★★★★ (1) | 1/500. |
| WB | ★★★★★ (1) | 1/20000. Detects a band of approximately 61 kDa (predicted molecular weight: 61 kDa). |

靶标

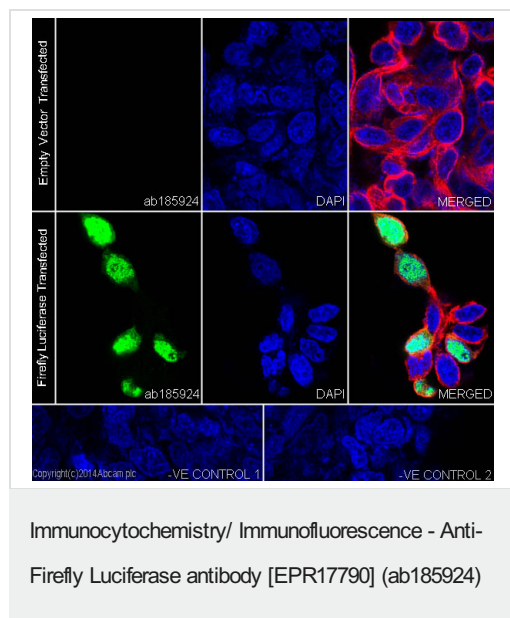
相关性

Luciferase from the firefly has become one of the more widely used reporter proteins for the study of gene expression. Luciferase catalyzes a bioluminescent reaction which requires the substrate luciferin as well as Mg²⁺ and ATP. Mixing these reagents with the cell extract containing luciferase, results in a flash of light that decays rapidly. This light can be detected by a luminometer. The total light emission is proportional to the luciferase activity of the sample.

细胞定位

Peroxisome

图片

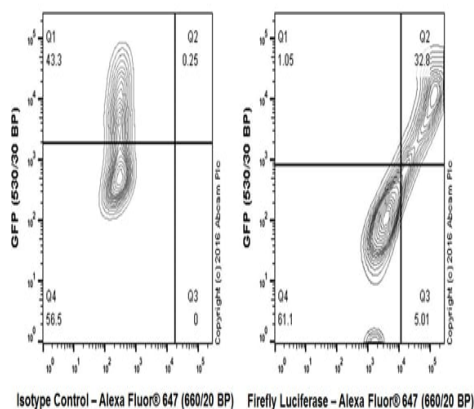


Immunofluorescent analysis of 4% paraformaldehyde-fixed, 0.1% Triton X-100 permeabilized HEK293T (Human epithelial cells from embryonic kidney) cells transfected with Empty vector or Firefly Luciferase, labeling Firefly Luciferase with ab185924 at 1/500 dilution, followed by Goat anti-rabbit IgG (Alexa Fluor® 488) ([ab150077](#)) secondary antibody at 1/500 dilution (green). Nuclear staining on HEK293T cells transfected with Firefly Luciferase is observed. The nuclear counter stain is DAPI (blue). Tubulin is detected with [ab7291](#) (anti-Tubulin mouse mAb) at 1/1000 dilution and [ab150120](#) (AlexaFluor®594 Goat anti-Mouse secondary) at 1/500 dilution (red).

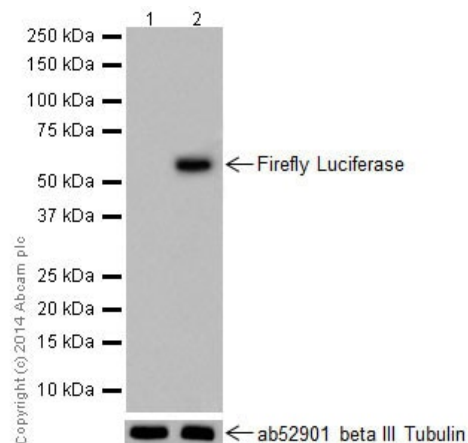
The negative controls are as follows;

-ve control 1: ab185924 at 1/500 dilution followed by [ab150120](#) (AlexaFluor®594 Goat anti-Mouse secondary) at 1/500 dilution.

-ve control 2: [ab7291](#) (anti-Tubulin mouse mAb) at 1/1000 dilution followed by [ab150077](#) (Alexa Fluor®488 Goat Anti-Rabbit IgG H&L) at 1/500 dilution.



Flow Cytometry - Anti-Firefly Luciferase antibody
[EPR17790] (ab185924)



Western blot - Anti-Firefly Luciferase antibody
[EPR17790] (ab185924)

Flow Cytometry analysis of 293T (Human epithelial cell line from embryonic kidney) cells transfected with GFP tagged Firefly Luciferase labeled with purified ab185924 at 1/70 dilution (10µg/ml, Right panel). Cells were fixed with 4% paraformaldehyde and permeabilised with 90% methanol. A Goat anti rabbit IgG (Alexa Fluor® 647)(1/2000 dilution) was used as the secondary antibody. Rabbit monoclonal IgG (Left panel) was used as the isotype control.

All lanes : Anti-Firefly Luciferase antibody [EPR17790]
(ab185924) at 1/20000 dilution

Lane 1 : Empty vector (vector control) transfected HEK293 (Human embryonic kidney) whole cell lysate

Lane 2 : Firefly Luciferase transfected HEK293 (Human embryonic kidney) whole cell lysate

Lysates/proteins at 10 µg per lane.

Secondary

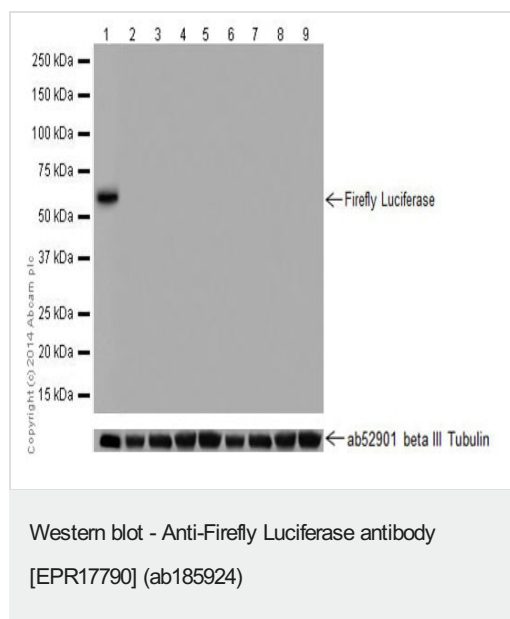
All lanes : Goat Anti-Rabbit IgG, (H+L), Peroxidase conjugate at 1/1000 dilution

Predicted band size: 61 kDa

Observed band size: 61 kDa

Exposure time: 3 minutes

Blocking/Dilution buffer: 5% NFDM/TBST.



All lanes : Anti-Firefly Luciferase antibody [EPR17790] (ab185924) at 1/1000 dilution

Lane 1 : Firefly Luciferase transfected HEK293 (human embryonic kidney) whole cell lysate at 10 µg

Lane 2 : HeLa (Human epithelial cells from cervix adenocarcinoma) whole cell lysate at 20 µg

Lane 3 : MCF7 (Human breast adenocarcinoma cell line) whole cell lysate at 20 µg

Lane 4 : Jurkat (Human T cell leukemia cells from peripheral blood) whole cell lysate at 20 µg

Lane 5 : SH-SY5Y (Human neuroblastoma from bone marrow cells) whole cell lysate at 20 µg

Lane 6 : Human fetal brain lysate at 10 µg

Lane 7 : Human fetal heart lysate at 10 µg

Lane 8 : Human fetal kidney lysate at 10 µg

Lane 9 : Human fetal spleen lysate at 10 µg

Secondary

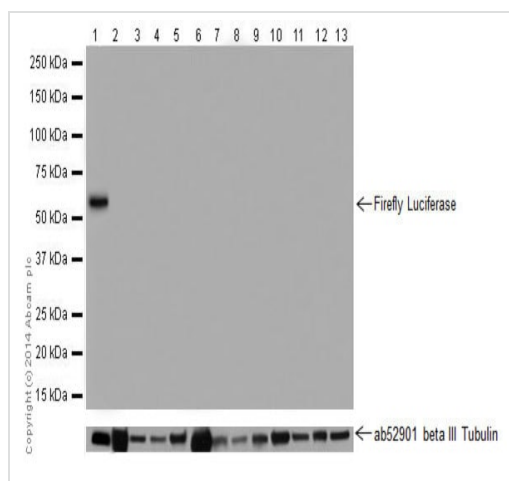
All lanes : Anti-Rabbit IgG (HRP), specific to the non-reduced form of IgG at 1/1000 dilution

Predicted band size: 61 kDa

Observed band size: 61 kDa

Exposure time: 3 minutes

Blocking/Dilution buffer: 5% NFDm/TBST.



Western blot - Anti-Firefly Luciferase antibody
[EPR17790] (ab185924)

All lanes : Anti-Firefly Luciferase antibody [EPR17790]
(ab185924) at 1/1000 dilution

Lane 1 : Firefly Luciferase transfected HEK293 (Human embryonic kidney) whole cell lysate

Lane 2 : Mouse brain lysate

Lane 3 : Mouse heart lysate

Lane 4 : Mouse kidney lysate

Lane 5 : Mouse spleen lysate

Lane 6 : Rat brain lysate

Lane 7 : Rat heart lysate

Lane 8 : Rat kidney lysate

Lane 9 : Rat spleen lysate

Lane 10 : C6 (Rat glial tumor cells) whole cell lysate

Lane 11 : RAW 264.7 (Mouse macrophage cells transformed with Abelson murine leukemia virus) whole cell lysate

Lane 12 : PC-12 (Rat adrenal gland pheochromocytoma) whole cell lysate

Lane 13 : NIH/3T3 (Mouse embryo fibroblast cells) whole cell lysate

Lysates/proteins at 10 µg per lane.

Secondary

All lanes : Goat Anti-Rabbit IgG, (H+L), Peroxidase conjugate at 1/1000 dilution

Predicted band size: 61 kDa

Observed band size: 61 kDa

Exposure time: 3 minutes

Blocking/Dilution buffer: 5% NFDM/TBST.

Why choose a recombinant antibody?



Research with confidence
Consistent and reproducible results



Long-term and scalable supply
Recombinant technology



Success from the first experiment
Confirmed specificity



Ethical standards compliant
Animal-free production

Anti-Firefly Luciferase antibody [EPR17790]
(ab185924)

Please note: All products are "FOR RESEARCH USE ONLY. NOT FOR USE IN DIAGNOSTIC PROCEDURES"

Our Abpromise to you: Quality guaranteed and expert technical support

- Replacement or refund for products not performing as stated on the datasheet
- Valid for 12 months from date of delivery
- Response to your inquiry within 24 hours
- We provide support in Chinese, English, French, German, Japanese and Spanish
- Extensive multi-media technical resources to help you
- We investigate all quality concerns to ensure our products perform to the highest standards

If the product does not perform as described on this datasheet, we will offer a refund or replacement. For full details of the Abpromise, please visit <https://www.abcam.cn/abpromise> or contact our technical team.

Terms and conditions

- Guarantee only valid for products bought direct from Abcam or one of our authorized distributors