

Anti-Fibulin 2 antibody ab96138

1 References [1 图像](#)

概述

产品名称	Anti-Fibulin 2抗体
描述	兔多克隆抗体to Fibulin 2
宿主	Rabbit
经测试应用	适用于: WB
种属反应性	与反应: Human
免疫原	Recombinant fragment, corresponding to a region within amino acids 20-283 of Human Fibulin 2 (NP_001004019).
阳性对照	H1299 and HeLa whole cell lysates
常规说明	<p>The Life Science industry has been in the grips of a reproducibility crisis for a number of years. Abcam is leading the way in addressing this with our range of recombinant monoclonal antibodies and knockout edited cell lines for gold-standard validation. Please check that this product meets your needs before purchasing.</p> <p>If you have any questions, special requirements or concerns, please send us an inquiry and/or contact our Support team ahead of purchase. Recommended alternatives for this product can be found below, along with publications, customer reviews and Q&As</p>

性能

形式	Liquid
存放说明	Shipped at 4°C. Upon delivery aliquot and store at -20°C. Avoid freeze / thaw cycles.
存储溶液	<p>pH: 7.00</p> <p>Preservative: 0.025% Proclin 300</p> <p>Constituents: 79% PBS, 20% Glycerol (glycerin, glycerine)</p>
纯度	Immunogen affinity purified
纯化说明	Purified by antigen affinity chromatography.
克隆	多克隆
同种型	IgG

应用

The Abpromise guarantee

Abpromise™ 承诺保证使用 ab96138 于以下的经测试应用

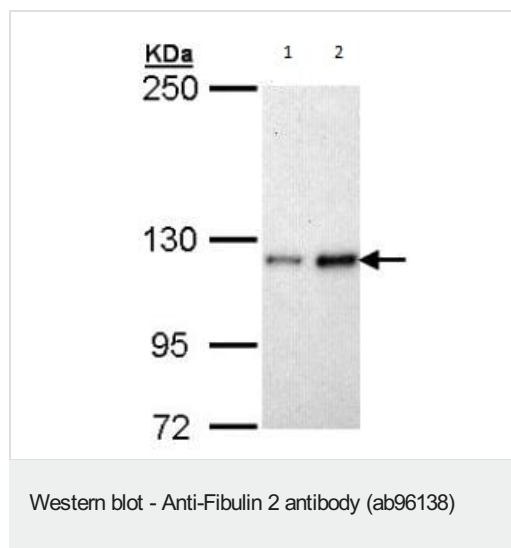
“应用说明”部分 下显示的仅为推荐的起始稀释度;实际最佳的稀释度/浓度应由使用者检定。

应用	Ab 评论	说明
WB		1/500 - 1/3000. Predicted molecular weight: 132 kDa.

靶标

功能	Its binding to fibronectin and some other ligands is calcium dependent.
组织特异性	Component of both basement membranes and other connective tissues. Expressed in heart, placenta and ovary.
序列相似性	Belongs to the fibulin family. Contains 3 anaphylatoxin-like domains. Contains 11 EGF-like domains.
发展阶段	Widely expressed during embryonic development. Primarily detected within the neuropithelium, spinal ganglia and peripheral nerves.
细胞定位	Secreted > extracellular space > extracellular matrix.

图片



All lanes : Anti-Fibulin 2 antibody (ab96138) at 1/1000 dilution

Lane 1 : H1299 whole cell lysate

Lane 2 : Hela whole cell lysate

Lysates/proteins at 30 µg per lane.

Predicted band size: 132 kDa

5% SDS PAGE

Please note: All products are "FOR RESEARCH USE ONLY. NOT FOR USE IN DIAGNOSTIC PROCEDURES"

Our Abpromise to you: Quality guaranteed and expert technical support

- Replacement or refund for products not performing as stated on the datasheet
- Valid for 12 months from date of delivery
- Response to your inquiry within 24 hours
- We provide support in Chinese, English, French, German, Japanese and Spanish

- Extensive multi-media technical resources to help you
- We investigate all quality concerns to ensure our products perform to the highest standards

If the product does not perform as described on this datasheet, we will offer a refund or replacement. For full details of the Abpromise, please visit <https://www.abcam.cn/abpromise> or contact our technical team.

Terms and conditions

- Guarantee only valid for products bought direct from Abcam or one of our authorized distributors