

Anti-Fibrinogen beta chain antibody [EPR19765] ab193932

重组 RabMAb

2 References 5 图像

概述

产品名称	Anti-Fibrinogen beta chain抗体[EPR19765]
描述	兔单克隆抗体[EPR19765] to Fibrinogen beta chain
宿主	Rabbit
经测试应用	适用于: WB, ICC/IF, IP
种属反应性	与反应: Human
免疫原	Full length native protein (purified) corresponding to Human Fibrinogen beta chain. Database link: P02675
阳性对照	WB: HepG2 whole cell lysate; Human plasma and fetal liver tissue lysate. ICC/IF: HepG2 cells. IP: HepG2 whole cell lysate.
常规说明	This product is a recombinant monoclonal antibody, which offers several advantages including: <ul style="list-style-type: none">- High batch-to-batch consistency and reproducibility- Improved sensitivity and specificity- Long-term security of supply- Animal-free production For more information see here . Our RabMAb [®] technology is a patented hybridoma-based technology for making rabbit monoclonal antibodies. For details on our patents, please refer to RabMAb[®] patents .

性能

形式	Liquid
存放说明	Shipped at 4°C. Store at +4°C short term (1-2 weeks). Upon delivery aliquot. Store at -20°C long term. Avoid freeze / thaw cycle.
存储溶液	pH: 7.2 Preservative: 0.01% Sodium azide Constituents: 0.05% BSA, 40% Glycerol (glycerin, glycerine), 59% PBS
纯度	Protein A purified
克隆	单克隆
克隆编号	EPR19765

应用

The Abpromise guarantee **Abpromise™**承诺保证使用ab193932于以下的经测试应用

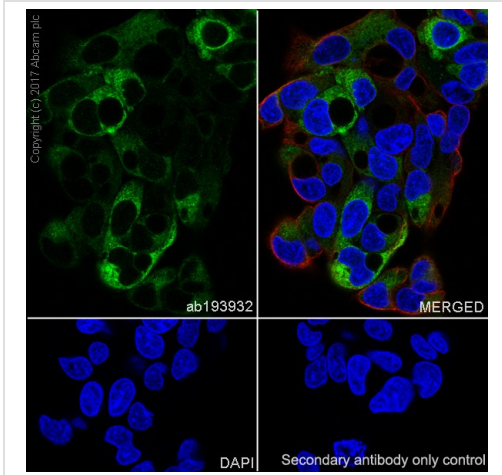
“应用说明”部分下显示的仅为推荐的起始稀释度;实际最佳的稀释度/浓度应由使用者检定。

应用	Ab评论	说明
WB		1/1000. Detects a band of approximately 55 kDa (predicted molecular weight: 55 kDa).
ICC/IF		1/100.
IP		1/30.

靶标

功能	Fibrinogen has a double function: yielding monomers that polymerize into fibrin and acting as a cofactor in platelet aggregation.
疾病相关	Defects in FGB are a cause of congenital afibrinogenemia (CAFBN) [MIM:202400]. This rare autosomal recessive disorder is characterized by bleeding that varies from mild to severe and by complete absence or extremely low levels of plasma and platelet fibrinogen. Note=Patients with congenital fibrinogen abnormalities can manifest different clinical pictures. Some cases are clinically silent, some show a tendency toward bleeding and some show a predisposition for thrombosis with or without bleeding.
序列相似性	Contains 1 fibrinogen C-terminal domain.
结构域	A long coiled coil structure formed by 3 polypeptide chains connects the central nodule to the C-terminal domains (distal nodules). The long C-terminal ends of the alpha chains fold back, contributing a fourth strand to the coiled coil structure.
翻译后修饰	Conversion of fibrinogen to fibrin is triggered by thrombin, which cleaves fibrinopeptides A and B from alpha and beta chains, and thus exposes the N-terminal polymerization sites responsible for the formation of the soft clot. The soft clot is converted into the hard clot by factor XIIIa which catalyzes the epsilon-(gamma-glutamyl)lysine cross-linking between gamma chains (stronger) and between alpha chains (weaker) of different monomers.
细胞定位	Secreted.

图片

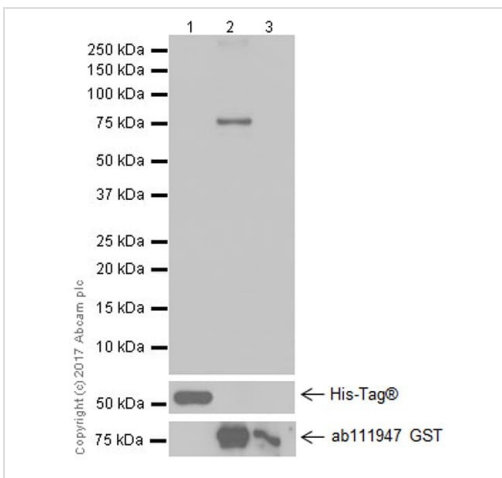


Immunocytochemistry/ Immunofluorescence - Anti-Fibrinogen beta chain antibody [EPR19765] (ab193932)

Immunofluorescent analysis of 4% PFA-fixed, 0.1% Triton X-100 permeabilized HepG2 (human liver hepatocellular carcinoma cell line) cells labeling Fibrinogen beta chain with ab193932 at 1/100 dilution, followed by Goat Anti-Rabbit IgG H&L (Alexa Fluor® 488) (ab150077) secondary antibody at 1/1000 dilution (green). Confocal image showing cytoplasmic staining of Fibrinogen beta on HepG2 cells.

The nuclear counter stain is DAPI (blue). Tubulin is detected with Anti-alpha Tubulin antibody [DM1A] - Microtubule Marker (Alexa Fluor® 594) (ab195889) (red) at 1/200 dilution.

Secondary antibody only control: Used PBS instead of primary antibody, secondary antibody is Goat Anti-Rabbit IgG H&L (Alexa Fluor® 488) (ab150077) secondary antibody at 1/1000 dilution.



Western blot - Anti-Fibrinogen beta chain antibody [EPR19765] (ab193932)

All lanes : Anti-Fibrinogen beta chain antibody [EPR19765] (ab193932) at 1/2000 dilution

Lane 1 : His-tagged human fibrinogen alpha chain recombinant protein (aa401-866)

Lane 2 : GST-His-tagged human fibrinogen beta chain recombinant protein (aa1-491)

Lane 3 : GST-His-tagged human fibrinogen gamma chain recombinant protein (aa1-453)

Lysates/proteins at 0.02 µg per lane.

Secondary

All lanes : Goat Anti-Rabbit IgG H&L (HRP) (ab97051) at 1/100000 dilution

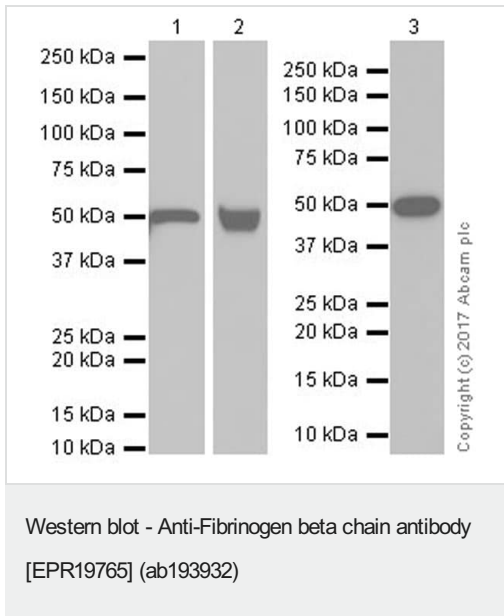
Developed using the ECL technique.

Predicted band size: 55 kDa

Observed band size: 80 kDa

Exposure time: 1 second

Blocking/Dilution buffer: 5% NFDm/TBST.



All lanes : Anti-Fibrinogen beta chain antibody [EPR19765] (ab193932) at 1/1000 dilution

Lane 1 : Human fetal liver tissue lysate

Lane 2 : Human plasma

Lane 3 : HepG2 (human liver hepatocellular carcinoma cell line) whole cell lysate

Lysates/proteins at 20 µg per lane.

Secondary

Lanes 1-2 : VeriBlot for IP Detection Reagent (HRP) (**ab131366**) at 1/1000 dilution

Lane 3 : Goat Anti-Rabbit IgG Peroxidase Conjugate, specific to the non-reduced form of IgG at 1/10000 dilution

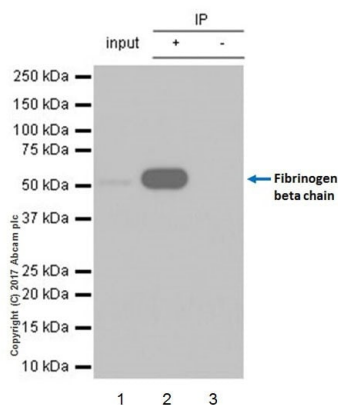
Developed using the ECL technique.

Predicted band size: 55 kDa

Observed band size: 55 kDa

Blocking/Dilution buffer: 5% NFDm/TBST.

Exposure time: Lane 1: 5 seconds; Lane 2: 1 second; Lane 3: 3 minutes.



Immunoprecipitation - Anti-Fibrinogen beta chain antibody [EPR19765] (ab193932)

Fibrinogen beta chain was immunoprecipitated from 0.35 mg of HepG2 (human liver hepatocellular carcinoma cell line) lysate with ab193932 at 1/30 dilution. Western blot was performed from the immunoprecipitate using ab193932 at 1/500 dilution. VeriBlot for IP Detection Reagent (HRP) (**ab131366**), was used for detection at 1/1000 dilution.

Lane 1: HepG2 whole cell lysate 10 µg (Input).

Lane 2: ab193932 IP in HepG2 whole cell lysate.

Lane 3: Rabbit monoclonal IgG (**ab172730**) instead of ab193932 in HepG2 whole cell lysate.

Blocking and dilution buffer and concentration: 5% NFDN/TBST.

Exposure time: 30 seconds.

Why choose a recombinant antibody?



Research with confidence
Consistent and reproducible results



Long-term and scalable supply
Recombinant technology



Success from the first experiment
Confirmed specificity



Ethical standards compliant
Animal-free production

Anti-Fibrinogen beta chain antibody [EPR19765] (ab193932)

Please note: All products are "FOR RESEARCH USE ONLY. NOT FOR USE IN DIAGNOSTIC PROCEDURES"

Our Abpromise to you: Quality guaranteed and expert technical support

- Replacement or refund for products not performing as stated on the datasheet
- Valid for 12 months from date of delivery
- Response to your inquiry within 24 hours
- We provide support in Chinese, English, French, German, Japanese and Spanish
- Extensive multi-media technical resources to help you
- We investigate all quality concerns to ensure our products perform to the highest standards

If the product does not perform as described on this datasheet, we will offer a refund or replacement. For full details of the Abpromise, please visit <https://www.abcam.cn/abpromise> or contact our technical team.

Terms and conditions

- Guarantee only valid for products bought direct from Abcam or one of our authorized distributors