

# Anti-FGFRL1 antibody ab95940

[7 References](#) [2 图像](#)

### 概述

产品名称	Anti-FGFRL1抗体
描述	兔多克隆抗体to FGFRL1
宿主	Rabbit
经测试应用	适用于: WB, IHC-P, ICC/IF
种属反应性	与反应: Human 预测可用于: Mouse, Rat 
免疫原	Recombinant protein fragment containing a sequence corresponding to a region within amino acids 150 - 486 of Human FGFRL1
常规说明	<p>The Life Science industry has been in the grips of a reproducibility crisis for a number of years. Abcam is leading the way in addressing this with our range of recombinant monoclonal antibodies and knockout edited cell lines for gold-standard validation. Please check that this product meets your needs before purchasing.</p> <p>If you have any questions, special requirements or concerns, please send us an inquiry and/or contact our Support team ahead of purchase. Recommended alternatives for this product can be found below, along with publications, customer reviews and Q&amp;As</p>

### 性能

形式	Liquid
存放说明	Shipped at 4°C. Upon delivery aliquot. Store at -20°C or -80°C. Avoid freeze / thaw cycle.
存储溶液	pH: 7.00 Preservative: 0.025% Proclin 300 Constituents: 79% PBS, 20% Glycerol (glycerin, glycerine)
纯度	Immunogen affinity purified
克隆	多克隆
同种型	IgG

### 应用

The Abpromise guarantee

**Abpromise™** 承诺保证使用ab95940于以下的经测试应用

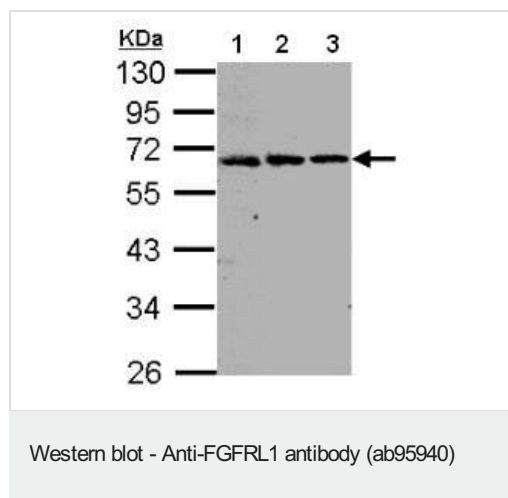
“应用说明”部分 下显示的仅为推荐的起始稀释度;实际最佳的稀释度/浓度应由使用者检定。

应用	Ab评论	说明
WB		1/500 - 1/3000. Predicted molecular weight: 55 kDa.
IHC-P		1/100 - 1/250.
ICC/IF		Use at an assay dependent concentration.

## 靶标

功能	Has a negative effect on cell proliferation.
组织特异性	Expressed preferentially in cartilaginous tissues and pancreas. Highly expressed in the liver, kidney, heart, brain and skeletal muscle. Weakly expressed in the lung, small intestine and spleen.
序列相似性	Contains 3 Ig-like C2-type (immunoglobulin-like) domains.
细胞定位	Membrane. Predominantly localized in the plasma membrane but also detected in the Golgi and in secretory vesicles.

## 图片



**All lanes :** Anti-FGFR1 antibody (ab95940) at 1/1000 dilution

**Lane 1 :** 293T whole cell lysate

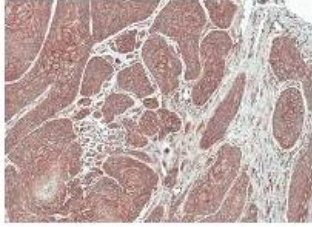
**Lane 2 :** HepG2 whole cell lysate

**Lane 3 :** Raji whole cell lysate

Lysates/proteins at 30 µg per lane.

**Predicted band size:** 55 kDa

10% SDS PAGE



ab95940, at a 1/100 dilution, staining FGFR1 in paraffin-embedded Oral CA Cal27 by Immunohistochemical analysis.

Immunohistochemistry (Formalin/PFA-fixed paraffin-embedded sections) - Anti-FGFR1 antibody (ab95940)

**Please note:** All products are "FOR RESEARCH USE ONLY. NOT FOR USE IN DIAGNOSTIC PROCEDURES"

### **Our Abpromise to you: Quality guaranteed and expert technical support**

---

- Replacement or refund for products not performing as stated on the datasheet
- Valid for 12 months from date of delivery
- Response to your inquiry within 24 hours
- We provide support in Chinese, English, French, German, Japanese and Spanish
- Extensive multi-media technical resources to help you
- We investigate all quality concerns to ensure our products perform to the highest standards

If the product does not perform as described on this datasheet, we will offer a refund or replacement. For full details of the Abpromise, please visit <https://www.abcam.cn/abpromise> or contact our technical team.

### **Terms and conditions**

---

- Guarantee only valid for products bought direct from Abcam or one of our authorized distributors