


Anti-FGFR1 Oncogene Partner antibody [EPR9929] ab156013

重组 RabMAb

1 References 3 图像

概述	
产品名称	Anti-FGFR1 Oncogene Partner抗体[EPR9929]
描述	兔单克隆抗体[EPR9929] to FGFR1 Oncogene Partner
宿主	Rabbit
经测试应用	适用于: WB, ICC/IF 不适用于: IHC-P
种属反应性	与反应: Human 预测可用于: Mouse, Rat 
免疫原	Synthetic peptide. This information is proprietary to Abcam and/or its suppliers.
阳性对照	HeLa, 293T and Saos-2 cell lysates; HeLa cells.
常规说明	<p>This product is a recombinant monoclonal antibody, which offers several advantages including:</p> <ul style="list-style-type: none">- High batch-to-batch consistency and reproducibility- Improved sensitivity and specificity- Long-term security of supply- Animal-free production <p>For more information see here.</p> <p>Our RabMAb[®] technology is a patented hybridoma-based technology for making rabbit monoclonal antibodies. For details on our patents, please refer to RabMAb[®] patents.</p>
性能	
形式	Liquid
存放说明	Shipped at 4°C. Store at -20°C.
存储溶液	pH: 7.2 Preservative: 0.01% Sodium azide Constituents: 9% PBS, 40% Glycerol (glycerin, glycerine), 0.05% BSA, 50% Tissue culture supernatant
纯度	Protein A purified
克隆	单克隆
克隆编号	EPR9929

同种型

IgG

应用

The Abpromise guarantee

Abpromise™承诺保证使用ab156013于以下的经测试应用

“应用说明”部分 下显示的仅为推荐的起始稀释度;实际最佳的稀释度/浓度应由使用者检定。

应用	Ab评论	说明
WB		1/1000 - 1/10000. Predicted molecular weight: 43 kDa.
ICC/IF		1/100 - 1/250.

应用说明

Is unsuitable for IHC-P.

靶标

功能

Required for anchoring microtubules to the centrosomes.

组织特异性

Ubiquitous. Highly expressed in heart, liver, muscle, kidney, intestine, colon, adrenal gland, prostate, testis, and pancreas.

疾病相关

Note=A chromosomal aberration involving FGFR1OP may be a cause of stem cell myeloproliferative disorder (MPD). Translocation t(6;8)(q27;p11) with FGFR1. MPD is characterized by myeloid hyperplasia, eosinophilia and T-cell or B-cell lymphoblastic lymphoma. In general it progresses to acute myeloid leukemia. The fusion proteins FGFR1OP-FGFR1 or FGFR1-FGFR1OP may exhibit constitutive kinase activity and be responsible for the transforming activity.

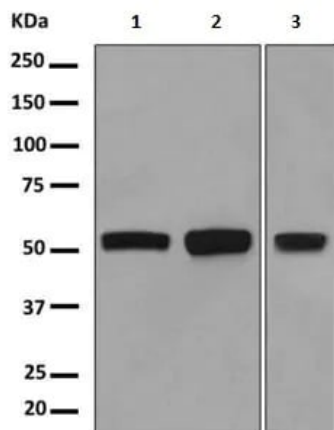
序列相似性

Belongs to the FGFR1OP family.
Contains 1 LisH domain.

细胞定位

Cytoplasm > cytoskeleton > centrosome. Associated with gamma-tubulin.

图片



Western blot - Anti-FGFR1 Oncogene Partner antibody [EPR9929] (ab156013)

All lanes : Anti-FGFR1 Oncogene Partner antibody [EPR9929] (ab156013) at 1/1000 dilution

Lane 1 : HeLa cell lysate

Lane 2 : 293T cell lysate

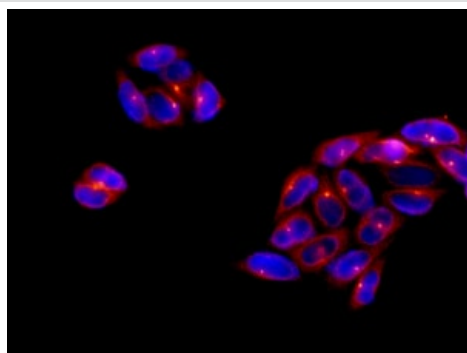
Lane 3 : Saos-2 cell lysate

Lysates/proteins at 10 µg per lane.

Secondary

All lanes : HRP labelled goat anti-rabbit at 1/2000 dilution

Predicted band size: 43 kDa



Immunocytochemistry/ Immunofluorescence - Anti-FGFR1 Oncogene Partner antibody [EPR9929] (ab156013)

Immunofluorescent analysis of HeLa cells labeling FGFR1 Oncogene Partner with ab156013 at 1/100 dilution.

Why choose a recombinant antibody?



Research with confidence
Consistent and reproducible results



Long-term and scalable supply
Recombinant technology



Success from the first experiment
Confirmed specificity



Ethical standards compliant
Animal-free production

Anti-FGFR1 Oncogene Partner antibody [EPR9929] (ab156013)

Our Abpromise to you: Quality guaranteed and expert technical support

- Replacement or refund for products not performing as stated on the datasheet
- Valid for 12 months from date of delivery
- Response to your inquiry within 24 hours
- We provide support in Chinese, English, French, German, Japanese and Spanish
- Extensive multi-media technical resources to help you
- We investigate all quality concerns to ensure our products perform to the highest standards

If the product does not perform as described on this datasheet, we will offer a refund or replacement. For full details of the Abpromise, please visit <https://www.abcam.cn/abpromise> or contact our technical team.

Terms and conditions

- Guarantee only valid for products bought direct from Abcam or one of our authorized distributors