

### Anti-FBXL3 antibody ab96645

★★★★★ [1 Abreviews](#) [3 References](#) [2 图像](#)

#### 概述

产品名称	Anti-FBXL3抗体
描述	兔多克隆抗体to FBXL3
宿主	Rabbit
经测试应用	适用于: WB, ICC/IF
种属反应性	与反应: Human 预测可用于: Mouse, Rat, Cow, Zebrafish 
免疫原	Recombinant protein fragment corresponding to a region within amino acids 14 and 279 of Human FBXL3 (NP_036290).
阳性对照	293T, H1299, HeLa, HepG2 and Raji cell lines. MOLT4 whole cell lysate and A431 cells
常规说明	<p>The Life Science industry has been in the grips of a reproducibility crisis for a number of years. Abcam is leading the way in addressing this with our range of recombinant monoclonal antibodies and knockout edited cell lines for gold-standard validation. Please check that this product meets your needs before purchasing.</p> <p>If you have any questions, special requirements or concerns, please send us an inquiry and/or contact our Support team ahead of purchase. Recommended alternatives for this product can be found below, along with publications, customer reviews and Q&amp;As</p>

#### 性能

形式	Liquid
存放说明	Shipped at 4°C. Upon delivery aliquot and store at -20°C or -80°C. Avoid repeated freeze / thaw cycles.
存储溶液	pH: 7.00 Preservative: 0.01% Thimerosal (merthiolate) Constituents: 1.21% Tris, 0.75% Glycine, 10% Glycerol (glycerin, glycerine)
纯度	Immunogen affinity purified
克隆	多克隆
同种型	IgG

#### 应用

## The Abpromise guarantee

**Abpromise™**承诺保证使用ab96645于以下的经测试应用

“应用说明”部分 下显示的仅为推荐的起始稀释度;实际最佳的稀释度/浓度应由使用者检定。

应用	Ab评论	说明
WB	★★★★★ (1)	1/500 - 1/3000. Predicted molecular weight: 49 kDa.
ICC/IF		1/100 - 1/200.

## 靶标

### 功能

Substrate-recognition component of some SCF (SKP1-CUL1-F-box protein)-type E3 ubiquitin ligase complex involved in circadian clock function. The SCF(FBXL3) complex acts by mediating ubiquitination and subsequent degradation of CRY1 and CRY2. Recruiter of target protein that may recognize and bind to some phosphorylated proteins and promotes their ubiquitination and degradation.

### 组织特异性

Widely expressed.

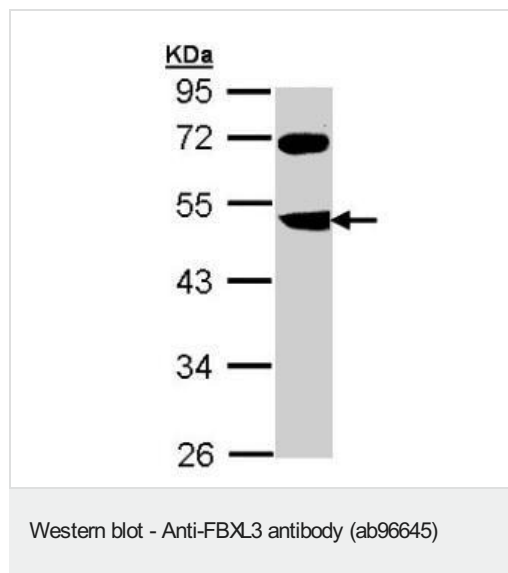
### 序列相似性

Contains 1 F-box domain.  
Contains 7 LRR (leucine-rich) repeats.

### 细胞定位

Nucleus. Cytoplasm. Predominantly nuclear.

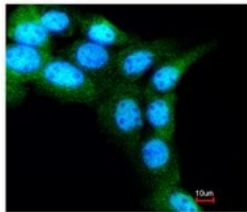
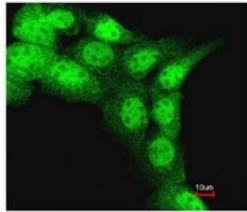
## 图片



Anti-FBXL3 antibody (ab96645) at 1/1000 dilution + MOLT4 whole cell lysate at 30 µg

**Predicted band size:** 49 kDa

10% SDS PAGE



ab96645, at a 1/200 dilution, staining FBXL3 in paraformaldehyde fixed A431 by Immunofluorescence analysis. Lower image merged with DNA probe.

Immunocytochemistry/ Immunofluorescence - Anti-FBXL3 antibody (ab96645)

**Please note:** All products are "FOR RESEARCH USE ONLY. NOT FOR USE IN DIAGNOSTIC PROCEDURES"

### Our Abpromise to you: Quality guaranteed and expert technical support

---

- Replacement or refund for products not performing as stated on the datasheet
- Valid for 12 months from date of delivery
- Response to your inquiry within 24 hours
- We provide support in Chinese, English, French, German, Japanese and Spanish
- Extensive multi-media technical resources to help you
- We investigate all quality concerns to ensure our products perform to the highest standards

If the product does not perform as described on this datasheet, we will offer a refund or replacement. For full details of the Abpromise, please visit <https://www.abcam.cn/abpromise> or contact our technical team.

### Terms and conditions

---

- Guarantee only valid for products bought direct from Abcam or one of our authorized distributors