


Anti-Fbx32 antibody ab74023

★★★★★ [6 Abreviews](#) [29 References](#) [1 图像](#)

概述

产品名称	Anti-Fbx32抗体
描述	兔多克隆抗体to Fbx32
宿主	Rabbit
特异性	This antibody is only batch tested in WB and therefore we can only guarantee it for this application. Customers have successfully used this antibody in IHC and ICC but we have not tested it's performance in these applications. If you would like an antibody that is tested in ICC, we would recommend our recombinant antibody ab168372 .
经测试应用	适用于: WB
种属反应性	与反应: Mouse, Rat, Human 预测可用于: Chicken, Cow, Pig, Zebrafish 
免疫原	Synthetic peptide within Human Fbx32 aa 300 to the C-terminus (internal sequence) conjugated to keyhole limpet haemocyanin. The exact sequence is proprietary. (Peptide available as ab74022)
阳性对照	WB: Human, mouse and rat skeletal muscle tissue lysate.
常规说明	The Life Science industry has been in the grips of a reproducibility crisis for a number of years. Abcam is leading the way in addressing this with our range of recombinant monoclonal antibodies and knockout edited cell lines for gold-standard validation. Please check that this product meets your needs before purchasing. If you have any questions, special requirements or concerns, please send us an inquiry and/or contact our Support team ahead of purchase. Recommended alternatives for this product can be found below, along with publications, customer reviews and Q&As

性能

形式	Liquid
存放说明	Shipped at 4°C. Store at +4°C short term (1-2 weeks). Upon delivery aliquot. Store at -20°C or -80°C. Avoid freeze / thaw cycle.
存储溶液	pH: 7.40 Preservative: 0.02% Sodium azide Constituent: PBS

Batches of this product that have a concentration < 1mg/ml may have BSA added as a stabilising agent. If you would like information about the formulation of a specific lot, please contact our scientific support team who will be happy to help.

纯度	Immunogen affinity purified
克隆	多克隆
同种型	IgG

应用

The Abpromise guarantee

Abpromise™ 承诺保证使用ab74023于以下的经测试应用

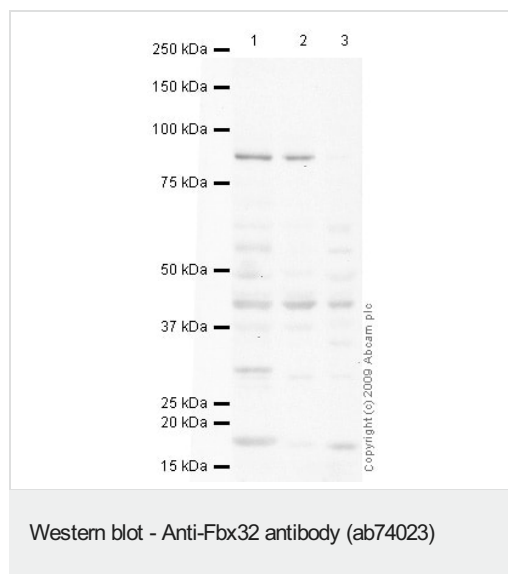
“应用说明”部分 下显示的仅为推荐的起始稀释度;实际最佳的稀释度/浓度应由使用者检定。

应用	Ab评论	说明
WB	★★★★★ (3)	Use a concentration of 2 µg/ml. Detects a band of approximately 42 kDa (predicted molecular weight: 42 kDa).

靶标

功能	Substrate recognition component of a (SKP1-CUL1-F-box protein) E3 ubiquitin-protein ligase complex which mediates the ubiquitination and subsequent proteasomal degradation of target proteins. Probably recognizes and binds to phosphorylated target proteins during skeletal muscle atrophy. Recognizes TERF1.
组织特异性	Specifically expressed in cardiac and skeletal muscle.
通路	Protein modification; protein ubiquitination.
序列相似性	Contains 1 F-box domain.

图片



All lanes : Anti-Fbx32 antibody (ab74023) at 2 µg/ml

Lane 1 : Human skeletal muscle tissue lysate - total protein
(**ab29330**)

Lane 2 : Mouse skeletal muscle tissue lysate

Lane 3 : Rat skeletal muscle tissue lysate

Lysates/proteins at 10 µg per lane.

Secondary

All lanes : Goat polyclonal to Rabbit IgG - H&L - Pre-Adsorbed
(HRP) at 1/3000 dilution

Performed under reducing conditions.

Predicted band size: 42 kDa

Observed band size: 42 kDa

Additional bands at: 90 kDa. We are unsure as to the identity of these extra bands.

Exposure time: 15 minutes

Please note: All products are "FOR RESEARCH USE ONLY. NOT FOR USE IN DIAGNOSTIC PROCEDURES"

Our Abpromise to you: Quality guaranteed and expert technical support

- Replacement or refund for products not performing as stated on the datasheet
- Valid for 12 months from date of delivery
- Response to your inquiry within 24 hours
- We provide support in Chinese, English, French, German, Japanese and Spanish
- Extensive multi-media technical resources to help you
- We investigate all quality concerns to ensure our products perform to the highest standards

If the product does not perform as described on this datasheet, we will offer a refund or replacement. For full details of the Abpromise, please visit <https://www.abcam.cn/abpromise> or contact our technical team.

Terms and conditions

- Guarantee only valid for products bought direct from Abcam or one of our authorized distributors