

# Anti-FBP2 antibody [EPR7436] ab131253

**重组 RabMAb**

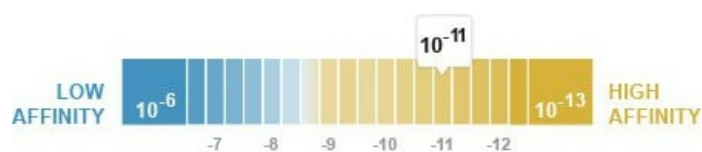
**3 References** [4 图像](#)

### 概述

<b>产品名称</b>	Anti-FBP2抗体[EPR7436]
<b>描述</b>	兔单克隆抗体[EPR7436] to FBP2
<b>宿主</b>	Rabbit
<b>经测试应用</b>	<b>适用于:</b> WB, IHC-P <b>不适用于:</b> ICC/IF or IP
<b>种属反应性</b>	<b>与反应:</b> Mouse, Rat, Human
<b>免疫原</b>	Synthetic peptide within Human FBP2 aa 300 to the C-terminus (C terminal). The exact sequence is proprietary.
<b>阳性对照</b>	Human skeletal muscle, Rat muscle and Mouse muscle lysates; Human muscle tissue.
<b>常规说明</b>	This product is a recombinant monoclonal antibody, which offers several advantages including: <ul style="list-style-type: none"> <li>- High batch-to-batch consistency and reproducibility</li> <li>- Improved sensitivity and specificity</li> <li>- Long-term security of supply</li> <li>- Animal-free production</li> </ul> For more information <a href="#">see here</a> . Our RabMAb <sup>®</sup> technology is a patented hybridoma-based technology for making rabbit monoclonal antibodies. For details on our patents, please refer to <a href="#">RabMAb<sup>®</sup> patents</a> .

### 性能

<b>形式</b>	Liquid
<b>存放说明</b>	Shipped at 4°C. Store at -20°C. Stable for 12 months at -20°C.
<b>解离常数 (K<sub>D</sub>)</b>	K <sub>D</sub> = 2.90 x 10 <sup>-11</sup> M



[Learn more about K<sub>D</sub>](#)

<b>存储溶液</b>	pH: 7.20 Preservative: 0.01% Sodium azide
-------------	--

Constituents: 9% PBS, 40% Glycerol (glycerin, glycerine), 0.05% BSA, 50% Tissue culture supernatant

**纯度** Protein A purified  
**克隆** 单克隆  
**克隆编号** EPR7436  
**同种型** IgG

## 应用

**The Abpromise guarantee** **Abpromise™**承诺保证使用ab131253于以下的经测试应用

“应用说明”部分 下显示的仅为推荐的起始稀释度;实际最佳的稀释度/浓度应由使用者检定。

应用	Ab评论	说明
WB		1/1000 - 1/10000. Detects a band of approximately 34 kDa (predicted molecular weight: 37 kDa).
IHC-P		1/50 - 1/100. Perform heat mediated antigen retrieval with citrate buffer pH 6 before commencing with IHC staining protocol.

**应用说明** Is unsuitable for ICC/IF or IP.

## 靶标

**功能** Catalyzes the hydrolysis of fructose 1,6-bisphosphate to fructose 6-phosphate in the presence of divalent cations and probably participates in glycogen synthesis from carbohydrate precursors, such as lactate.

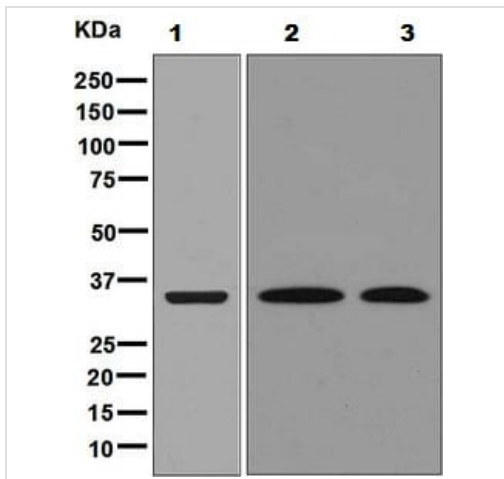
**组织特异性** Expressed in skeletal muscle (at protein level).

**通路** Carbohydrate biosynthesis; gluconeogenesis.

**序列相似性** Belongs to the FBPase class 1 family.

**细胞定位** Cell junction. Cytoplasm. Nucleus. Cytoplasm, myofibril, sarcomere, Z line. In neonatal cardiomyocytes, distributed throughout the cytosol, accumulating in the intercalated disks which occur at the Z line of cardiomyocytes and connect adjacent cells, and also located in the nucleus; dissociates from the Z line following an increase in cytosolic Ca(2+) concentration (By similarity). In muscle precursor cells, localizes predominantly to the nucleus and to a lesser extent to the cytoplasm at the proliferative phase, while mainly localizing to the cytoplasm at the differentiation phase (By similarity). Colocalizes with ALDOA and alpha-actinin on both sides of the Z line of skeletal muscle; dissociates rapidly from the Z line following an increase in cytosolic Ca(2+) concentration.

## 图片



Western blot - Anti-FBP2 antibody [EPR7436] (ab131253)

**All lanes** : Anti-FBP2 antibody [EPR7436] (ab131253) at 1/1000 dilution

**Lane 1** : Human skeletal muscle lysate

**Lane 2** : Rat muscle tissue lysate

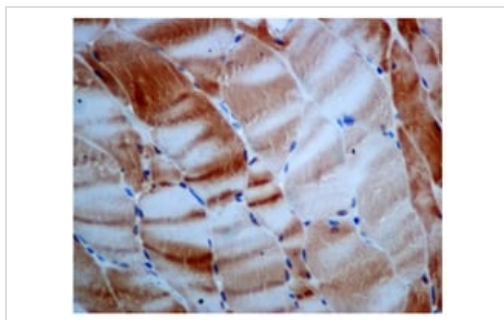
**Lane 3** : Mouse muscle tissue lysate

Lysates/proteins at 10 µg per lane.

### Secondary

**All lanes** : HRP labelled Goat anti Rabbit IgG at 1/2000 dilution

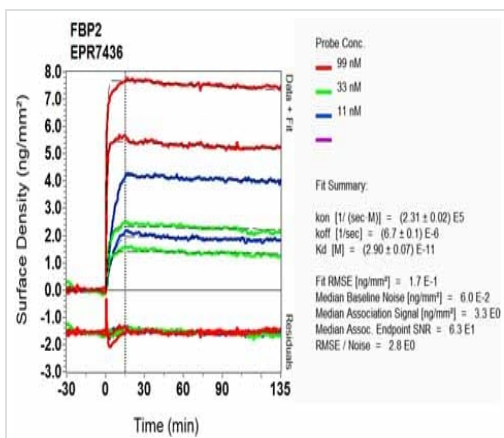
**Predicted band size:** 37 kDa



Immunohistochemistry (Formalin/PFA-fixed paraffin-embedded sections) - Anti-FBP2 antibody [EPR7436] (ab131253)

Immunohistochemical analysis of paraffin embedded Human muscle tissue labelling FBP2 with ab131253 antibody at 1/50 dilution.

Perform heat mediated antigen retrieval with citrate buffer pH 6 before commencing with IHC staining protocol.



OIR-D Scanning - Anti-FBP2 antibody [EPR7436] (ab131253)

Equilibrium disassociation constant ( $K_D$ )

Learn more about  $K_D$

[Click here to learn more about  \$K\_D\$](#)

### Why choose a recombinant antibody?



**Research with confidence**  
Consistent and reproducible results



**Long-term and scalable supply**  
Recombinant technology



**Success from the first experiment**  
Confirmed specificity



**Ethical standards compliant**  
Animal-free production

Anti-FBP2 antibody [EPR7436] (ab131253)

**Please note:** All products are "FOR RESEARCH USE ONLY. NOT FOR USE IN DIAGNOSTIC PROCEDURES"

### Our Abpromise to you: Quality guaranteed and expert technical support

---

- Replacement or refund for products not performing as stated on the datasheet
- Valid for 12 months from date of delivery
- Response to your inquiry within 24 hours
- We provide support in Chinese, English, French, German, Japanese and Spanish
- Extensive multi-media technical resources to help you
- We investigate all quality concerns to ensure our products perform to the highest standards

If the product does not perform as described on this datasheet, we will offer a refund or replacement. For full details of the Abpromise, please visit <https://www.abcam.cn/abpromise> or contact our technical team.

### Terms and conditions

---

- Guarantee only valid for products bought direct from Abcam or one of our authorized distributors