


Anti-FBP1 antibody ab191172

4 图像

概述

产品名称	Anti-FBP1抗体
描述	兔多克隆抗体to FBP1
宿主	Rabbit
经测试应用	适用于: WB, IHC-P
种属反应性	与反应: Mouse, Human 预测可用于: Rabbit, Pig 
免疫原	Synthetic peptide corresponding to Human FBP1 aa 100-200 (internal sequence) conjugated to keyhole limpet haemocyanin. NP_000498.2. Database link: P09467 Run BLAST with Run BLAST with
阳性对照	Human Kidney tissue; MCF7 and Mouse kidney lysates; FBP1 transfected 293 cell lysate.
常规说明	<p>The Life Science industry has been in the grips of a reproducibility crisis for a number of years. Abcam is leading the way in addressing this with our range of recombinant monoclonal antibodies and knockout edited cell lines for gold-standard validation. Please check that this product meets your needs before purchasing.</p> <p>If you have any questions, special requirements or concerns, please send us an inquiry and/or contact our Support team ahead of purchase. Recommended alternatives for this product can be found below, along with publications, customer reviews and Q&As</p>

性能

形式	Liquid
存放说明	Shipped at 4°C. Store at +4°C short term (1-2 weeks). Upon delivery aliquot. Store at -20°C long term. Avoid freeze / thaw cycle.
存储溶液	pH: 7.4 Preservative: 0.09% Sodium azide Constituent: 99% PBS
纯度	Ammonium Sulphate Precipitation
克隆	多克隆
同种型	IgG

应用

The Abpromise guarantee **Abpromise™**承诺保证使用ab191172于以下的经测试应用

“应用说明”部分 下显示的仅为推荐的起始稀释度;实际最佳的稀释度/浓度应由使用者检定。

应用	Ab评论	说明
WB		1/1000. Predicted molecular weight: 37 kDa.
IHC-P		1/75.

靶标

通路

Carbohydrate biosynthesis; gluconeogenesis.

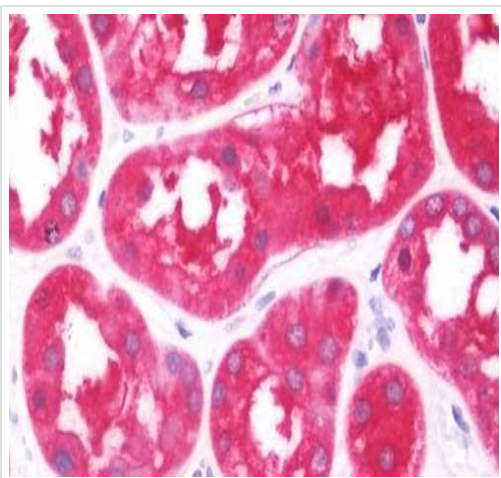
疾病相关

Defects in FBP1 are the cause of fructose-1,6-bisphosphatase deficiency (FBPD) [MIM:229700]. FBPD is inherited as an autosomal recessive disorder mainly in the liver and causes life-threatening episodes of hypoglycemia and metabolic acidosis (lactacidemia) in newborn infants or young children.

序列相似性

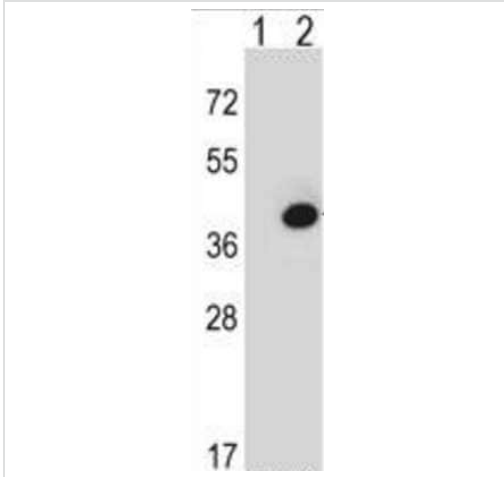
Belongs to the FBPase class 1 family.

图片



Immunohistochemical analysis of formalin-fixed, paraffin-embedded Human kidney tissue labeling FBP1 with ab191172 at 1/75 dilution.

Immunohistochemistry (Formalin/PFA-fixed paraffin-embedded sections) - Anti-FBP1 antibody (ab191172)



Western blot - Anti-FBP1 antibody (ab191172)

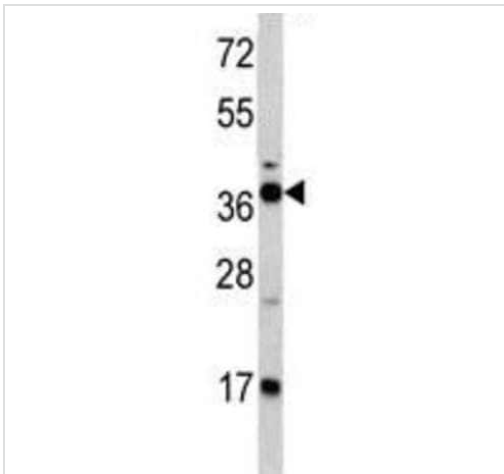
All lanes : Anti-FBP1 antibody (ab191172) at 1/1000 dilution

Lane 1 : 293 lysate, untransfected

Lane 2 : 293 cell lysate, transiently transfected with the FBP1 gene.

Lysates/proteins at 2 μ g per lane.

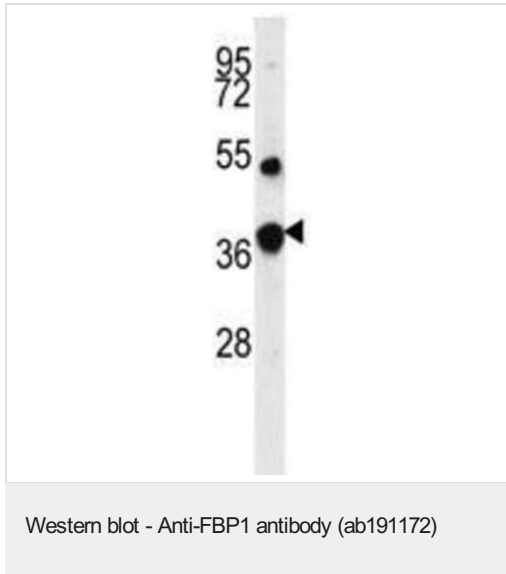
Predicted band size: 37 kDa



Western blot - Anti-FBP1 antibody (ab191172)

Anti-FBP1 antibody (ab191172) at 1/1000 dilution + Mouse kidney lysate at 35 μ g

Predicted band size: 37 kDa



Anti-FBP1 antibody (ab191172) at 1/1000 dilution + MCF7 cell lysate at 35 μ g

Predicted band size: 37 kDa

Please note: All products are "FOR RESEARCH USE ONLY. NOT FOR USE IN DIAGNOSTIC PROCEDURES"

Our Abpromise to you: Quality guaranteed and expert technical support

- Replacement or refund for products not performing as stated on the datasheet
- Valid for 12 months from date of delivery
- Response to your inquiry within 24 hours

- We provide support in Chinese, English, French, German, Japanese and Spanish
- Extensive multi-media technical resources to help you
- We investigate all quality concerns to ensure our products perform to the highest standards

If the product does not perform as described on this datasheet, we will offer a refund or replacement. For full details of the Abpromise, please visit <https://www.abcam.cn/abpromise> or contact our technical team.

Terms and conditions

- Guarantee only valid for products bought direct from Abcam or one of our authorized distributors