

### Anti-FANCA/FAA antibody ab5063

★★★★☆ [3 Abreviews](#) [11 References](#) [1 图像](#)

#### 概述

产品名称	Anti-FANCA/FAA抗体
描述	兔多克隆抗体to FANCA/FAA
宿主	Rabbit
特异性	Detects a band at 130kDa in HeLa cell lysate that we believe corresponds to FANCA/FAA.
经测试应用	<b>适用于:</b> WB
种属反应性	<b>与反应:</b> Human
免疫原	Synthetic peptide corresponding to Human FANCA/FAA aa 995-1009 conjugated to keyhole limpet haemocyanin. Sequence: SRSYDHSENSDLVFG-C

Database link: [O15360](#)

 [Run BLAST with](#)

 [Run BLAST with](#)

#### 常规说明

The Life Science industry has been in the grips of a reproducibility crisis for a number of years. Abcam is leading the way in addressing this with our range of recombinant monoclonal antibodies and knockout edited cell lines for gold-standard validation. Please check that this product meets your needs before purchasing.

If you have any questions, special requirements or concerns, please send us an inquiry and/or contact our Support team ahead of purchase. Recommended alternatives for this product can be found below, along with publications, customer reviews and Q&As

#### 性能

形式	Liquid
存放说明	Shipped at 4°C. Upon delivery aliquot and store at -20°C or -80°C. Avoid repeated freeze / thaw cycles.
存储溶液	Preservative: 0.01% Sodium azide Constituents: 0.42% Potassium phosphate, 0.87% Sodium chloride
纯度	Immunogen affinity purified
克隆	多克隆
同种型	IgG

## 应用

### The Abpromise guarantee **Abpromise™**承诺保证使用ab5063于以下的经测试应用

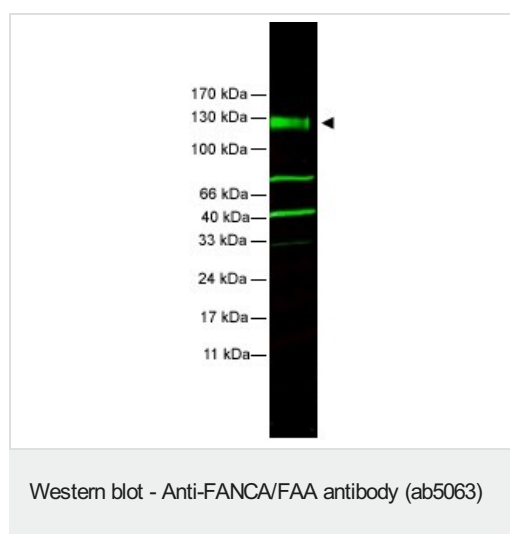
“应用说明”部分 下显示的仅为推荐的起始稀释度;实际最佳的稀释度/浓度应由使用者检定。

应用	Ab评论	说明
WB	★★★★☆ (3)	1/500 - 1/2000. Detects a band of approximately 130 kDa (predicted molecular weight: 163 kDa).

## 靶标

<b>功能</b>	DNA repair protein that may operate in a postreplication repair or a cell cycle checkpoint function. May be involved in interstrand DNA cross-link repair and in the maintenance of normal chromosome stability.
<b>疾病相关</b>	Defects in FANCA are a cause of Fanconi anemia (FA) [MIM:227650]. FA is a genetically heterogeneous, autosomal recessive disorder characterized by progressive pancytopenia, a diverse assortment of congenital malformations, and a predisposition to the development of malignancies. At the cellular level it is associated with hypersensitivity to DNA-damaging agents, chromosomal instability (increased chromosome breakage), and defective DNA repair.
<b>翻译后修饰</b>	Phosphorylated upon DNA damage, probably by ATM or ATR. Phosphorylation is required for the formation of the nuclear complex. Not phosphorylated in cells derived from groups A, B, C, E, F, G, and H.
<b>细胞定位</b>	Nucleus. Cytoplasm. The major form is nuclear. The minor form is cytoplasmic.

## 图片



Anti-FANCA/FAA antibody (ab5063) at 1/1500 dilution + HeLa whole cell lysate at 35 µg

### Secondary

IRDye 800 conjugated Goat anti-Rabbit IgG [H&L] at 1/10000 dilution

Performed under reducing conditions.

**Predicted band size:** 163 kDa

**Observed band size:** 130 kDa

**Additional bands at:** 42 kDa, 75 kDa. We are unsure as to the identity of these extra bands.

### **Our Abpromise to you: Quality guaranteed and expert technical support**

---

- Replacement or refund for products not performing as stated on the datasheet
- Valid for 12 months from date of delivery
- Response to your inquiry within 24 hours
  
- We provide support in Chinese, English, French, German, Japanese and Spanish
- Extensive multi-media technical resources to help you
- We investigate all quality concerns to ensure our products perform to the highest standards

If the product does not perform as described on this datasheet, we will offer a refund or replacement. For full details of the Abpromise, please visit <https://www.abcam.cn/abpromise> or contact our technical team.

### **Terms and conditions**

---

- Guarantee only valid for products bought direct from Abcam or one of our authorized distributors