

Anti-FABP6 antibody ab96122

1 图像

概述

产品名称	Anti-FABP6抗体
描述	兔多克隆抗体to FABP6
宿主	Rabbit
经测试应用	适用于: WB
种属反应性	与反应: Human
免疫原	Recombinant fragment containing a sequence corresponding to a region within amino acids 1-152 of Human FABP6 (NP_001035532).
阳性对照	HeLa S3 and HepG2 whole cell lysate (ab7900); 293T, A431, Molt-4, and Raji cell lysates
常规说明	<p>The Life Science industry has been in the grips of a reproducibility crisis for a number of years. Abcam is leading the way in addressing this with our range of recombinant monoclonal antibodies and knockout edited cell lines for gold-standard validation. Please check that this product meets your needs before purchasing.</p> <p>If you have any questions, special requirements or concerns, please send us an inquiry and/or contact our Support team ahead of purchase. Recommended alternatives for this product can be found below, along with publications, customer reviews and Q&As</p>

性能

形式	Liquid
存放说明	Shipped at 4°C. Upon delivery aliquot and store at -20°C or -80°C. Avoid repeated freeze / thaw cycles.
存储溶液	<p>pH: 7.00</p> <p>Preservative: 0.01% Thimerosal (merthiolate)</p> <p>Constituents: 1.21% Tris, 0.75% Glycine, 10% Glycerol (glycerin, glycerine)</p>
纯度	Immunogen affinity purified
克隆	多克隆
同种型	IgG

应用

The Abpromise guarantee

Abpromise™ 承诺保证使用ab96122于以下的经测试应用

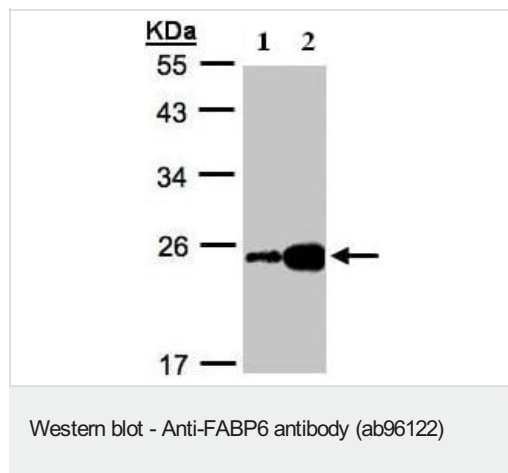
“应用说明”部分 下显示的仅为推荐的起始稀释度;实际最佳的稀释度/浓度应由使用者检定。

应用	Ab评论	说明
WB		1/500 - 1/3000. Predicted molecular weight: 20 kDa.

靶标

功能	Ileal protein which stimulates gastric acid and pepsinogen secretion. Seems to be able to bind to bile salts and bilirubins. Isoform 2 is essential for the survival of colon cancer cells to bile acid-induced apoptosis.
组织特异性	Isoform 2 is expressed in colorectal adenocarcinomas and their adjacent normal mucosa (at protein level). Isoform 1 is expressed in the jejunum, ileum, cecum and ascending colon intestine. Isoform 2 is expressed in the gallbladder, duodenum, jejunum, ileum, cecum, ascending, transverse and descending colon, sigmoid colon and rectum.
序列相似性	Belongs to the calycin superfamily. Fatty-acid binding protein (FABP) family.
结构域	Forms a beta-barrel structure that accommodates the hydrophobic ligand in its interior.
细胞定位	Cytoplasm and Cytoplasm. Localized close to nucleus on the apical side of both normal and neoplastic cells.

图片



All lanes : Anti-FABP6 antibody (ab96122) at 1/1000 dilution

Lane 1 : HeLa S3 whole cell lysate

Lane 2 : HepG2 whole cell lysate

Lysates/proteins at 30 µg per lane.

Predicted band size: 20 kDa

12% SDS-PAGE

Please note: All products are "FOR RESEARCH USE ONLY. NOT FOR USE IN DIAGNOSTIC PROCEDURES"

Our Abpromise to you: Quality guaranteed and expert technical support

- Replacement or refund for products not performing as stated on the datasheet
- Valid for 12 months from date of delivery
- Response to your inquiry within 24 hours

- We provide support in Chinese, English, French, German, Japanese and Spanish
- Extensive multi-media technical resources to help you
- We investigate all quality concerns to ensure our products perform to the highest standards

If the product does not perform as described on this datasheet, we will offer a refund or replacement. For full details of the Abpromise, please visit <https://www.abcam.cn/abpromise> or contact our technical team.

Terms and conditions

- Guarantee only valid for products bought direct from Abcam or one of our authorized distributors