

Anti-Extracellular matrix protein 1 antibody [EPR6701] ab126629

重组 RabMAb

★★★★★ 2 Abreviews 9 References 10 图像

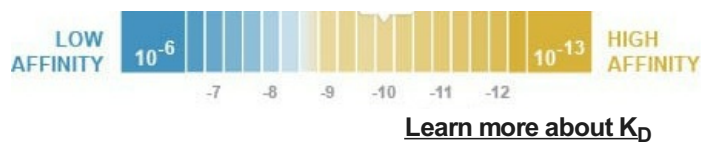
概述

产品名称	Anti-Extracellular matrix蛋白1抗体[EPR6701]
描述	兔单克隆抗体[EPR6701] to Extracellular matrix蛋白1
宿主	Rabbit
特异性	The rat recommendation is based on the WB results. We do not guarantee IHC-P for rat.
经测试应用	适用于: Flow Cyt (Intra), WB, IP, IHC-P, ICC/IF
种属反应性	与反应: Rat, Human
免疫原	Synthetic peptide within Human Extracellular matrix protein 1 aa 100-200. The exact sequence is proprietary. Database link: Q16610
阳性对照	WB: MDA MB 435 cell line, Rat heart, Rat kidney, Human skin cell, and A375 cell line lysates. IHC-P: Human breast carcinoma and Human kidney tissues. ICC/IF: A375 cells. IP: A375 cells. Flow Cyt (intra): A375 cells.
常规说明	This product is a recombinant monoclonal antibody, which offers several advantages including: <ul style="list-style-type: none"> - High batch-to-batch consistency and reproducibility - Improved sensitivity and specificity - Long-term security of supply - Animal-free production For more information see here . Our RabMAb [®] technology is a patented hybridoma-based technology for making rabbit monoclonal antibodies. For details on our patents, please refer to RabMAb[®] patents . Mouse: We have preliminary internal testing data to indicate this antibody may not react with this species. Please contact us for more information.

性能

形式	Liquid
存放说明	Shipped at 4°C. Store at -20°C. Stable for 12 months at -20°C.
解离常数 (K_D)	$K_D = 1.20 \times 10^{-10}$ M





存储溶液	pH: 7.20 Preservative: 0.01% Sodium azide Constituents: PBS, 0.05% BSA, 40% Glycerol (glycerin, glycerine)
纯度	Protein A purified
克隆	单克隆
克隆编号	EPR6701
同种型	IgG

应用

The Abpromise guarantee **Abpromise™** 承诺保证使用 ab126629 于以下的经测试应用

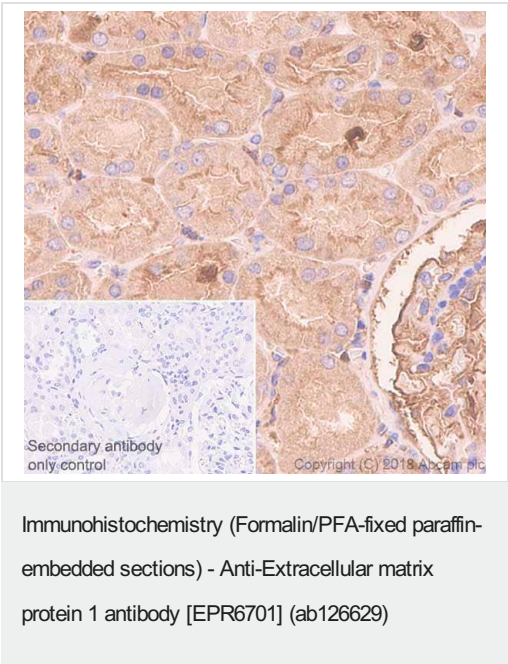
“应用说明”部分 下显示的仅为推荐的起始稀释度;实际最佳的稀释度/浓度应由使用者检定。

应用	Ab 评论	说明
Flow Cyt (Intra)		1/20.
WB		1/1000 - 1/10000. Predicted molecular weight: 61 kDa.
IP		1/10 - 1/100.
IHC-P	★ ★ ★ ★ ★ (1)	1/100 - 1/250. Perform heat mediated antigen retrieval with citrate buffer pH 6 before commencing with IHC staining protocol. The rat recommendation is based on the WB results. We do not guarantee IHC-P for rat. See IHC antigen retrieval protocols .
ICC/IF	★ ★ ★ ★ ★ (1)	1/100 - 1/250.

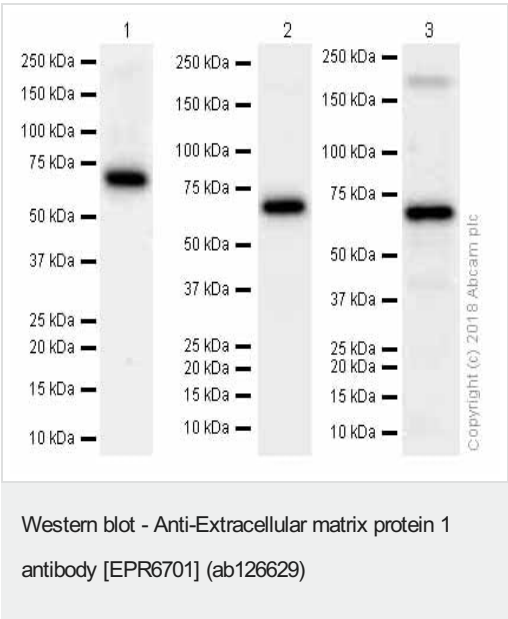
靶标

功能	Involved in endochondral bone formation as negative regulator of bone mineralization. Stimulates the proliferation of endothelial cells and promotes angiogenesis. Inhibits MMP9 proteolytic activity.
组织特异性	Expressed in breast cancer tissues. Little or no expression observed in normal breast tissues. Expressed in skin; wide expression is observed throughout the dermis with minimal expression in the epidermis.
疾病相关	Defects in ECM1 are the cause of lipoid proteinosis (LiP) [MIM:247100]; also known as lipoid proteinosis of Urbach and Wiethe or hyalinosis cutis et mucosae. LiP is a rare autosomal recessive disorder characterized by generalized thickening of skin, mucosae and certain viscera. Classical features include beaded eyelid papules and laryngeal infiltration leading to hoarseness. Histologically, there is widespread deposition of hyaline material and disruption/reduplication of basement membrane.

图片



Immunohistochemistry (Formalin/PFA-fixed paraffin-embedded sections) analysis of Human kidney tissue sections labeling Extracellular matrix protein 1 with purified ab126629 at 1:100 dilution (2.01 µg/ml). Heat mediated antigen retrieval was performed using [ab93684](#) (Tris/EDTA buffer, pH 9.0). ImmunoHistoProbe one step HRP Polymer (ready to use) was used as the secondary antibody. Negative control: PBS instead of the primary antibody. Hematoxylin was used as a counterstain.



All lanes : Anti-Extracellular matrix protein 1 antibody [EPR6701] (ab126629) at 1/2000 dilution (Purified)

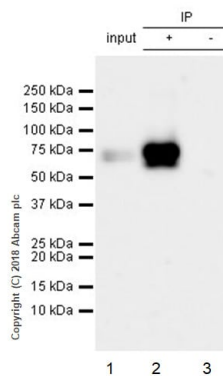
- Lane 1 :** A375 (Human malignant melanoma epithelial cell)
- Lane 2 :** Rat heart lysates
- Lane 3 :** Rat kidney lysates

Lysates/proteins at 15 µg per lane.

Secondary

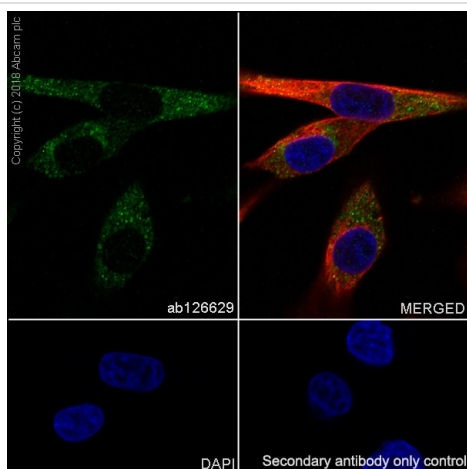
All lanes : Goat Anti-Rabbit IgG H&L (HRP) ([ab97051](#)) at 1/20000 dilution

Predicted band size: 61 kDa
Observed band size: 61 kDa



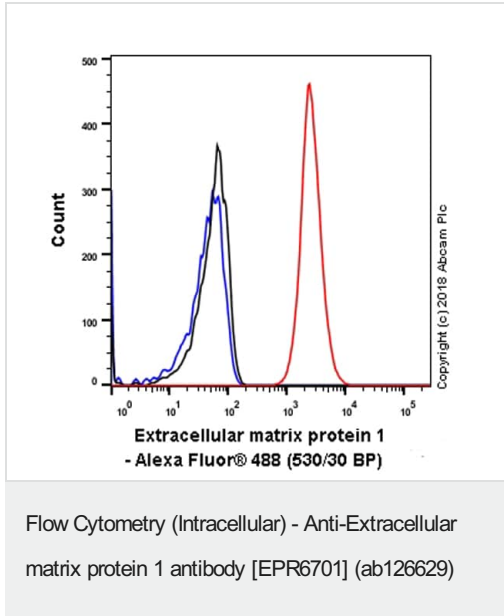
Immunoprecipitation - Anti-Extracellular matrix protein 1 antibody [EPR6701] (ab126629)

ab126629 (purified) at 1:20 dilution (2µg) immunoprecipitating Extracellular matrix protein 1 in A375 whole cell lysate.
 Lane 1 (input): A375 (Human malignant melanoma epithelial cell) whole cell lysate 10µg
 Lane 2 (+): ab126629 & A375 whole cell lysate
 Lane 3 (-): Rabbit monoclonal IgG (**ab172730**) instead of ab126629 in A375 whole cell lysate
 For western blotting, VeriBlot for IP Detection Reagent (HRP) (**ab131366**) was used for detection at 1:1000 dilution.
 Blocking and diluting buffer: 5% NFDM/TBST.

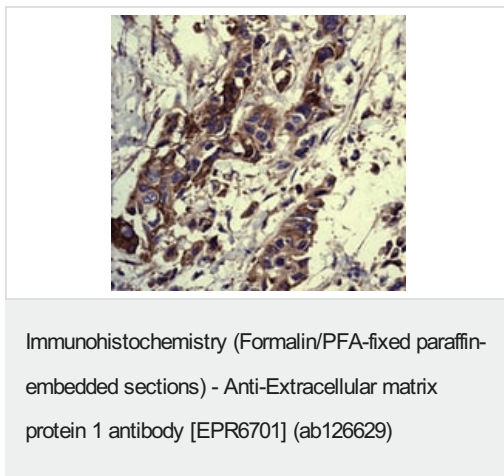


Immunocytochemistry/ Immunofluorescence - Anti-Extracellular matrix protein 1 antibody [EPR6701] (ab126629)

Immunocytochemistry/ Immunofluorescence analysis of A375 (Human malignant melanoma epithelial cell) cells labeling Extracellular matrix protein 1 with purified ab126629 at 1:100 dilution (2.0 µg/ml). Cells were fixed in 4% Paraformaldehyde and permeabilized with 0.1% tritonX-100. Cells were counterstained with Ab195889 Anti-alpha Tubulin antibody [DM1A] - Microtubule Marker (Alexa Fluor® 594) 1:200 (2.5 µg/ml). Goat anti rabbit IgG (Alexa Fluor® 488, **ab150077**) was used as the secondary antibody at 1:1000 (2 µg/ml) dilution. DAPI nuclear counterstain. PBS instead of the primary antibody was used as the secondary antibody only control.

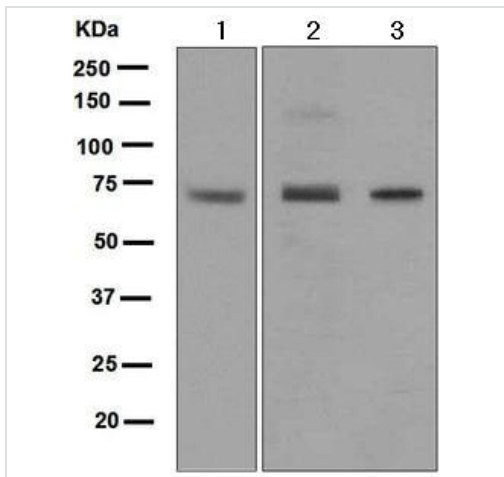


Intracellular Flow Cytometry analysis of A375 (Human malignant melanoma epithelial cell) cells labeling Extracellular matrix protein 1 with purified ab126629 at 1/20 dilution (10 µg/ml) (red). Cells were fixed with 4% Paraformaldehyde. A Goat anti rabbit IgG (Alexa Fluor® 488, [ab150077](#)) secondary antibody was used at 1/2000. Isotype control - Rabbit monoclonal IgG (Black). Unlabeled control - Cell without incubation with primary antibody and secondary antibody (Blue).



ab126629, at 1/100, staining Extracellular matrix protein 1 in formalin fixed, paraffin embedded Human breast carcinoma tissue by Immunohistochemistry.

Heat mediated antigen retrieval was performed with citrate buffer pH 6 before commencing with IHC staining protocol.



Western blot - Anti-Extracellular matrix protein 1 antibody [EPR6701] (ab126629)

All lanes : Anti-Extracellular matrix protein 1 antibody [EPR6701] (ab126629) at 1/1000 dilution

Lane 1 : MDA MB 435 cell line lysate

Lane 2 : Human skin cell lysate

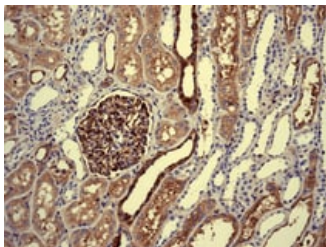
Lane 3 : A375 cell line lysate

Lysates/proteins at 10 µg per lane.

Secondary

All lanes : Goat anti-rabbit HRP conjugated antibody at 1/2000 dilution

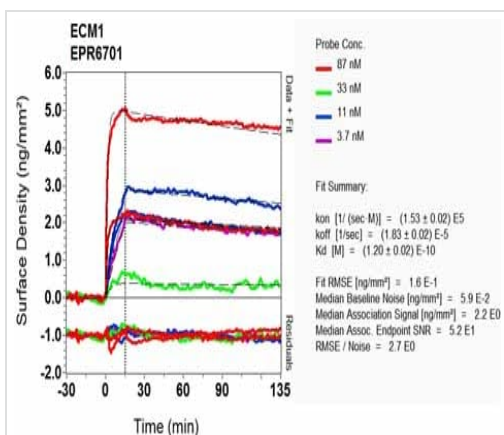
Predicted band size: 61 kDa



Immunohistochemistry (Formalin/PFA-fixed paraffin-embedded sections) - Anti-Extracellular matrix protein 1 antibody [EPR6701] (ab126629)

ab126629, at 1/100, staining Extracellular matrix protein 1 in formalin fixed, paraffin embedded Human kidney tissue by Immunohistochemistry.

Heat mediated antigen retrieval was performed with citrate buffer pH 6 before commencing with IHC staining protocol.



OIR-D Scanning - Anti-Extracellular matrix protein 1 antibody [EPR6701] (ab126629)

Equilibrium disassociation constant (K_D)

Learn more about K_D

[Click here to learn more about \$K_D\$](#)

Why choose a recombinant antibody?



Research with confidence
Consistent and reproducible results



Long-term and scalable supply
Recombinant technology



Success from the first experiment
Confirmed specificity



Ethical standards compliant
Animal-free production

Anti-Extracellular matrix protein 1 antibody
[EPR6701] (ab126629)

Please note: All products are "FOR RESEARCH USE ONLY. NOT FOR USE IN DIAGNOSTIC PROCEDURES"

Our Abpromise to you: Quality guaranteed and expert technical support

- Replacement or refund for products not performing as stated on the datasheet
- Valid for 12 months from date of delivery
- Response to your inquiry within 24 hours
- We provide support in Chinese, English, French, German, Japanese and Spanish
- Extensive multi-media technical resources to help you
- We investigate all quality concerns to ensure our products perform to the highest standards

If the product does not perform as described on this datasheet, we will offer a refund or replacement. For full details of the Abpromise, please visit <https://www.abcam.cn/abpromise> or contact our technical team.

Terms and conditions

- Guarantee only valid for products bought direct from Abcam or one of our authorized distributors