

### Anti-ETFB antibody ab232815

8 图像

#### 概述

产品名称	Anti-ETFB抗体
描述	兔多克隆抗体to ETFB
宿主	Rabbit
经测试应用	适用于: WB, IHC-P
种属反应性	与反应: Human, Pig 预测可用于: Mouse, Rat, Cow, Orangutan 
免疫原	Recombinant full length protein corresponding to Human ETFB aa 1 to the C-terminus. (Expressed in E.coli). Database link: <a href="#">P38117</a>  <a href="#">Run BLAST with</a>  <a href="#">Run BLAST with</a>
阳性对照	IHC-P: Human liver, breast cancer, prostate cancer, liver cancer, prostate and colorectal cancer tissues. WB: Pig liver, heart and skeletal muscle tissue lysates; Recombinant human ETFB protein.
常规说明	<p>The Life Science industry has been in the grips of a reproducibility crisis for a number of years. Abcam is leading the way in addressing this with our range of recombinant monoclonal antibodies and knockout edited cell lines for gold-standard validation. Please check that this product meets your needs before purchasing.</p> <p>If you have any questions, special requirements or concerns, please send us an inquiry and/or contact our Support team ahead of purchase. Recommended alternatives for this product can be found below, along with publications, customer reviews and Q&amp;As</p>

#### 性能

形式	Liquid
存放说明	Shipped at 4°C. Store at +4°C short term (1-2 weeks). Upon delivery aliquot. Store at -20°C long term. Avoid freeze / thaw cycle.
存储溶液	pH: 7.40 Preservative: 0.011% Proclin 300 Constituents: 55.77% Glycerol (glycerin, glycerine), 44.219% PBS
纯度	Immunogen affinity purified
纯化说明	ab232815 was purified by antigen-specific affinity chromatography followed by Protein A affinity

克隆 多克隆

同种型 IgG

## 应用

**The Abpromise guarantee** **Abpromise™**承诺保证使用ab232815于以下的经测试应用

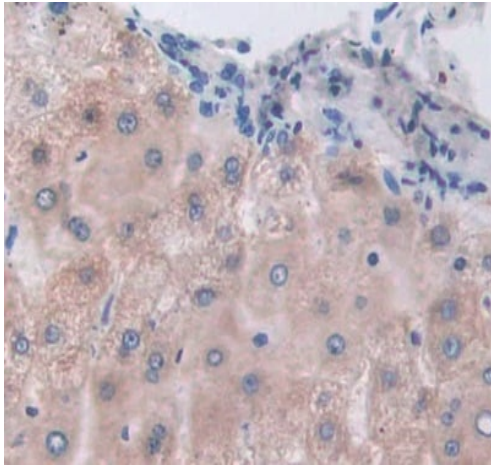
“应用说明”部分 下显示的仅为推荐的起始稀释度;实际最佳的稀释度/浓度应由使用者检定。

应用	Ab评论	说明
WB		Use a concentration of 0.5 - 2 µg/ml. Predicted molecular weight: 28 kDa.
IHC-P		Use a concentration of 5 - 20 µg/ml.

## 靶标

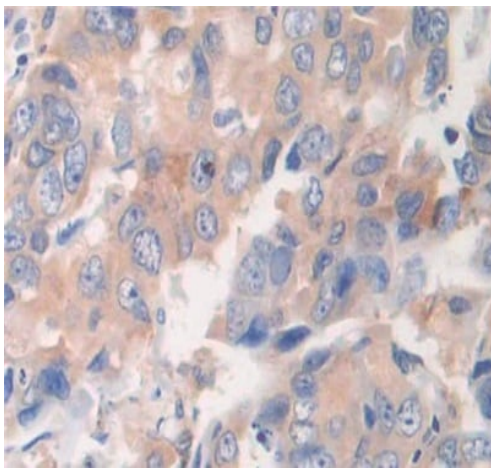
功能	The electron transfer flavoprotein serves as a specific electron acceptor for several dehydrogenases, including five acyl-CoA dehydrogenases, glutaryl-CoA and sarcosine dehydrogenase. It transfers the electrons to the main mitochondrial respiratory chain via ETF-ubiquinone oxidoreductase (ETF dehydrogenase).
组织特异性	Abundant in liver, heart and skeletal muscle. A weak expression is seen in the brain, placenta, lung, kidney and pancreas.
疾病相关	Glutaric aciduria 2B
序列相似性	Belongs to the ETF beta-subunit/FixA family.
结构域	The recognition loop recognizes a hydrophobic patch at the surface of interacting dehydrogenases and acts as a static anchor at the interface.
翻译后修饰	Methylated. Trimethylation at Lys-200 and Lys-203 may negatively regulate the activity in electron transfer from Acyl-CoA dehydrogenases.
细胞定位	Mitochondrion matrix.

## 图片



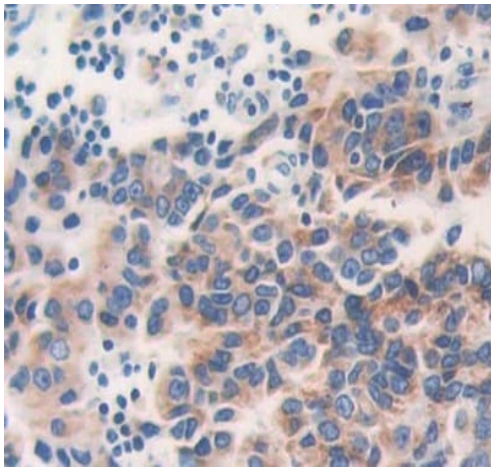
Immunohistochemistry (Formalin/PFA-fixed paraffin-embedded sections) - Anti-ETFB antibody (ab232815)

Paraffin-embedded human liver tissue stained for ETFB using ab232815 at 20 µg/ml in immunohistochemical analysis. DAB staining.



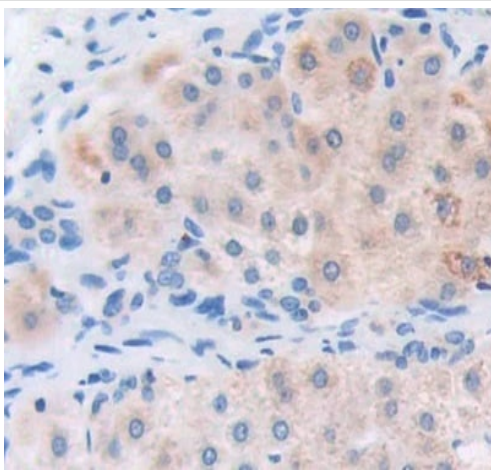
Immunohistochemistry (Formalin/PFA-fixed paraffin-embedded sections) - Anti-ETFB antibody (ab232815)

Paraffin-embedded human breast cancer tissue stained for ETFB using ab232815 at 20 µg/ml in immunohistochemical analysis. DAB staining.



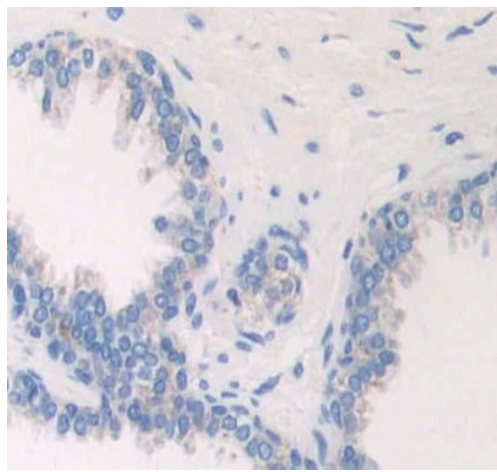
Immunohistochemistry (Formalin/PFA-fixed paraffin-embedded sections) - Anti-ETFB antibody (ab232815)

Paraffin-embedded human prostate cancer tissue stained for ETFB using ab232815 at 20 µg/ml in immunohistochemical analysis. DAB staining.



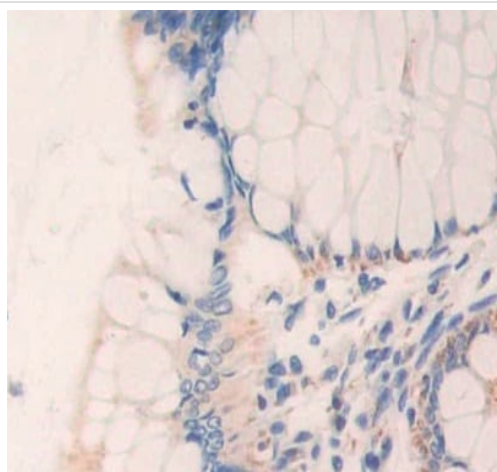
Immunohistochemistry (Formalin/PFA-fixed paraffin-embedded sections) - Anti-ETFB antibody (ab232815)

Paraffin-embedded human liver cancer tissue stained for ETFB using ab232815 at 20 µg/ml in immunohistochemical analysis. DAB staining.



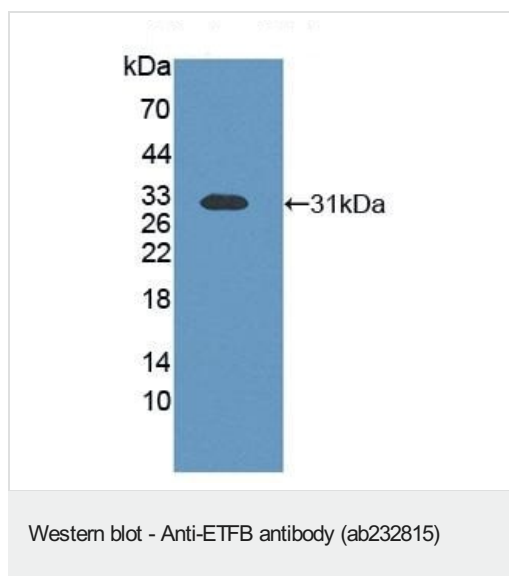
Immunohistochemistry (Formalin/PFA-fixed paraffin-embedded sections) - Anti-ETFB antibody (ab232815)

Paraffin-embedded human prostate tissue stained for ETFB using ab232815 at 20 µg/ml in immunohistochemical analysis. DAB staining.



Immunohistochemistry (Formalin/PFA-fixed paraffin-embedded sections) - Anti-ETFB antibody (ab232815)

Paraffin-embedded human colorectal cancer tissue stained for ETFB using ab232815 at 20 µg/ml in immunohistochemical analysis. DAB staining.

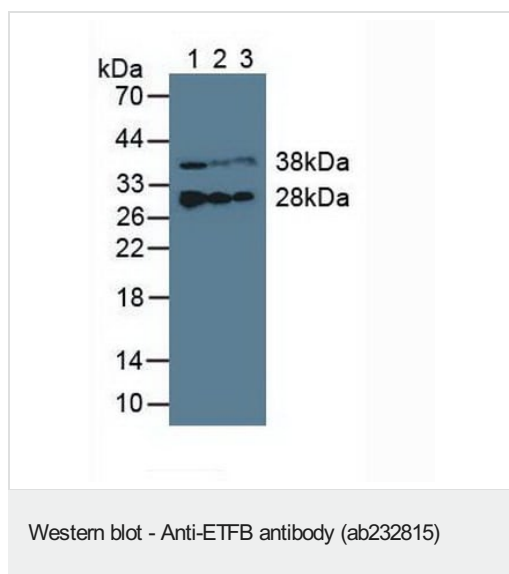


Anti-ETFB antibody (ab232815) at 3 µg/ml + Recombinant human ETFB protein

#### Secondary

HRP-Linked Guinea pig Anti-Rabbit at 1/2000 dilution

**Predicted band size:** 28 kDa



**All lanes :** Anti-ETFB antibody (ab232815) at 3 µg/ml

**Lane 1 :** Pig liver lysate

**Lane 2 :** Pig heart lysate

**Lane 3 :** Pig skeletal muscle lysate

#### Secondary

**All lanes :** HRP-Linked Guinea pig Anti-Rabbit at 1/2000 dilution

**Predicted band size:** 28 kDa

**Please note:** All products are "FOR RESEARCH USE ONLY. NOT FOR USE IN DIAGNOSTIC PROCEDURES"

### Our Abpromise to you: Quality guaranteed and expert technical support

- Replacement or refund for products not performing as stated on the datasheet
- Valid for 12 months from date of delivery
- Response to your inquiry within 24 hours
- We provide support in Chinese, English, French, German, Japanese and Spanish
- Extensive multi-media technical resources to help you
- We investigate all quality concerns to ensure our products perform to the highest standards

If the product does not perform as described on this datasheet, we will offer a refund or replacement. For full details of the Abpromise, please visit <https://www.abcam.cn/abpromise> or contact our technical team.

## Terms and conditions

---

- Guarantee only valid for products bought direct from Abcam or one of our authorized distributors