

# Anti-Estrogen Related Receptor beta antibody ab19331

★★★★☆ [7 Abreviews](#) [12 References](#) [1 图像](#)

### 概述

<b>产品名称</b>	Anti-Estrogen Related Receptor beta抗体
<b>描述</b>	兔多克隆抗体to Estrogen Related Receptor beta
<b>宿主</b>	Rabbit
<b>经测试应用</b>	<b>适用于:</b> WB <b>不适用于:</b> ICC/IF
<b>种属反应性</b>	<b>与反应:</b> Rat
<b>免疫原</b>	Synthetic peptide: DYELSQLRHEEPRR , corresponding to amino acids 376-388 of Mouse Estrogen Related Receptor beta. <a href="#">Run BLAST with</a> <a href="#">Run BLAST with</a>
<b>常规说明</b>	The Life Science industry has been in the grips of a reproducibility crisis for a number of years. Abcam is leading the way in addressing this with our range of recombinant monoclonal antibodies and knockout edited cell lines for gold-standard validation. Please check that this product meets your needs before purchasing.  If you have any questions, special requirements or concerns, please send us an inquiry and/or contact our Support team ahead of purchase. Recommended alternatives for this product can be found below, along with publications, customer reviews and Q&As

### 性能

<b>形式</b>	Liquid
<b>存放说明</b>	Shipped at 4°C. Upon delivery aliquot and store at -20°C or -80°C. Avoid repeated freeze / thaw cycles.
<b>存储溶液</b>	Preservative: 0.05% Sodium azide Constituents: PBS, 0.1% BSA
<b>纯度</b>	Immunogen affinity purified
<b>克隆</b>	多克隆
<b>同种型</b>	IgG

### 应用

## The Abpromise guarantee

**Abpromise™** 承诺保证使用ab19331于以下的经测试应用

“应用说明”部分下显示的仅为推荐的起始稀释度;实际最佳的稀释度/浓度应由使用者检定。

应用	Ab评论	说明
WB		Use a concentration of 2 µg/ml. Detects a band of approximately 48 kDa (predicted molecular weight: 48 kDa).

### 应用说明

Is unsuitable for ICC/IF.

### 靶标

#### 功能

Nuclear receptor, may regulate ESR1 transcriptional activity.

#### 疾病相关

Defects in ESRRB are the cause of deafness autosomal recessive type 35 (DFNB35) [MIM:608565]. DFNB35 is a form of sensorineural hearing loss. Sensorineural deafness results from damage to the neural receptors of the inner ear, the nerve pathways to the brain, or the area of the brain that receives sound information.

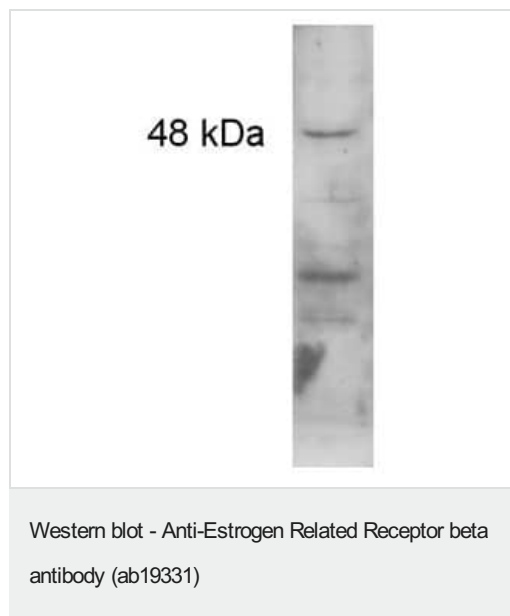
#### 序列相似性

Belongs to the nuclear hormone receptor family. NR3 subfamily.  
Contains 1 nuclear receptor DNA-binding domain.

#### 细胞定位

Nucleus.

### 图片



Western blot detection of Estrogen Related Receptor beta from 100 ug of rat kidney lysate (1:500).

**Please note:** All products are "FOR RESEARCH USE ONLY. NOT FOR USE IN DIAGNOSTIC PROCEDURES"

### Our Abpromise to you: Quality guaranteed and expert technical support

- Replacement or refund for products not performing as stated on the datasheet
- Valid for 12 months from date of delivery

- Response to your inquiry within 24 hours
- We provide support in Chinese, English, French, German, Japanese and Spanish
- Extensive multi-media technical resources to help you
- We investigate all quality concerns to ensure our products perform to the highest standards

If the product does not perform as described on this datasheet, we will offer a refund or replacement. For full details of the Abpromise, please visit <https://www.abcam.cn/abpromise> or contact our technical team.

### **Terms and conditions**

---

- Guarantee only valid for products bought direct from Abcam or one of our authorized distributors