

Anti-Estrogen Receptor alpha antibody [EPR4097] ab108398

重组 RabMAb

★★★★★ 11 Abreviews 37 References 18 图像

概述

产品名称	Anti-Estrogen Receptor alpha抗体[EPR4097]
描述	兔单克隆抗体[EPR4097] to Estrogen Receptor alpha
宿主	Rabbit
特异性	Expression levels of ER alpha protein vary with sample type.
经测试应用	适用于: Flow Cyt (Intra), WB, IHC-P, IHC-Fr, ChIC/CUT&RUN-seq, ICC/IF
种属反应性	与反应: Human
免疫原	Recombinant fragment. This information is proprietary to Abcam and/or its suppliers.
阳性对照	WB: MCF7 and T47-D cell lysates. IHC-Fr: Frozen Human cervix and uterus tissue sections. IHC-P: Human breast ductal infiltrating carcinoma and normal breast tissues. ICC/IF: MCF-7 cells.
常规说明	<p>This product is a recombinant monoclonal antibody, which offers several advantages including:</p> <ul style="list-style-type: none"><li>- High batch-to-batch consistency and reproducibility</li><li>- Improved sensitivity and specificity</li><li>- Long-term security of supply</li><li>- Animal-free production</li></ul> <p>For more information <a href="#">see here</a>.</p> <p>Our RabMAb® technology is a patented hybridoma-based technology for making rabbit monoclonal antibodies. For details on our patents, please refer to <a href="#">RabMAb® patents</a>.</p>

性能

形式	Liquid
存放说明	Shipped at 4°C. Store at +4°C short term (1-2 weeks). Upon delivery aliquot. Store at -20°C. Stable for 12 months at -20°C.
存储溶液	pH: 7.20 Preservative: 0.01% Sodium azide Constituents: 40% Glycerol (glycerin, glycerine), 0.05% BSA, 59% PBS
纯度	Protein A purified
克隆	单克隆
克隆编号	EPR4097

同种型

IgG

应用

The Abpromise guarantee

Abpromise™承诺保证使用ab108398于以下的经测试应用

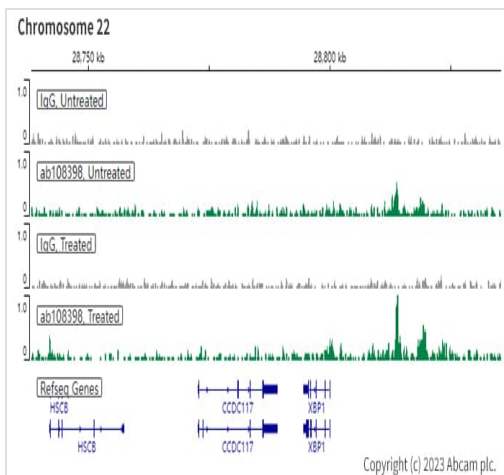
“应用说明”部分 下显示的仅为推荐的起始稀释度;实际最佳的稀释度/浓度应由使用者检定。

应用	Ab评论	说明
Flow Cyt (Intra)		Use at an assay dependent concentration.
WB	★★★★★ (5)	1/1000 - 1/10000. Predicted molecular weight: 66 kDa. <b>For unpurified use at 1/200 - 1/1000.</b>
IHC-P	★★★★★ (3)	1/250. Perform heat mediated antigen retrieval with Tris/EDTA buffer pH 9.0 before commencing with IHC staining protocol. See <b><u>IHC antigen retrieval protocols.</u></b> <b>For unpurified use at 1/30.</b>
IHC-Fr		Use a concentration of 5 µg/ml.
ChIC/CUT&RUN-seq		Use at an assay dependent concentration.
ICC/IF		1/250. <b>For unpurified use at 1/30.</b>

靶标

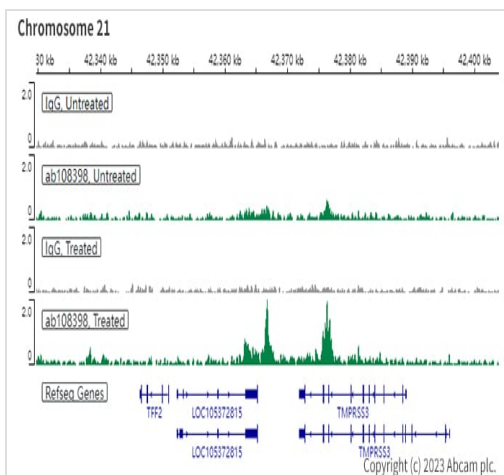
功能	Nuclear hormone receptor. The steroid hormones and their receptors are involved in the regulation of eukaryotic gene expression and affect cellular proliferation and differentiation in target tissues. Can activate the transcriptional activity of TFF1.
序列相似性	Belongs to the nuclear hormone receptor family. NR3 subfamily. Contains 1 nuclear receptor DNA-binding domain.
结构域	Composed of three domains: a modulating N-terminal domain, a DNA-binding domain and a C-terminal ligand-binding domain.
翻译后修饰	Phosphorylated by cyclin A/CDK2. Phosphorylation probably enhances transcriptional activity. Glycosylated; contains N-acetylglucosamine, probably O-linked. Ubiquitinated. Deubiquitinated by OTUB1. Dimethylated by PRMT1 at Arg-260. The methylation may favor cytoplasmic localization. Palmitoylated (isoform 3). Not biotinylated (isoform 3).
细胞定位	Nucleus. Cytoplasm. Cell membrane. A minor fraction is associated with the inner membrane and Nucleus. Cytoplasm. Cell membrane. Associated with the inner membrane via palmitoylation.

图片



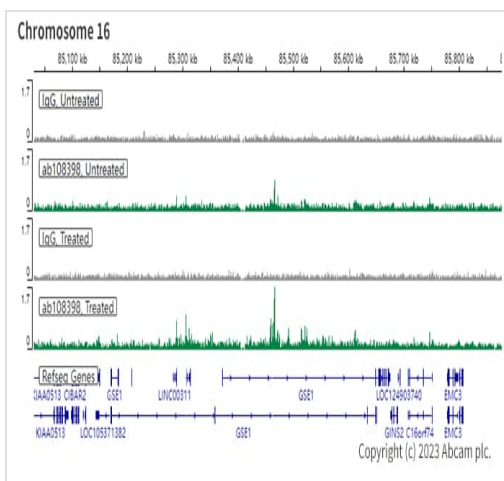
ChIC/CUT&RUN sequencing - Anti-Estrogen  
Receptor alpha antibody [EPR4097] (ab108398)

ChIC/CUT&RUN was performed using a pAG-MNase at a final concentration of 700 ng/ $\mu$ L,  $2.5 \times 10^5$  MCF7 (Human breast adenocarcinoma epithelial cell) cells treated with phenol red free medium and 5% charcoal stripped FBS for 3 days than treated with  $\beta$ -estradiol (10 nM 45 min) and 5  $\mu$ g of ab108398 [EPR4097]. The resulting DNA was sequenced on the Illumina NovaSeq 6000 to a depth of 10 million reads. The negative IgG control **ab172730** is also shown. The University of Geneva owns patents relevant to ChIC (Chromatin Immuno-Cleavage) methods.

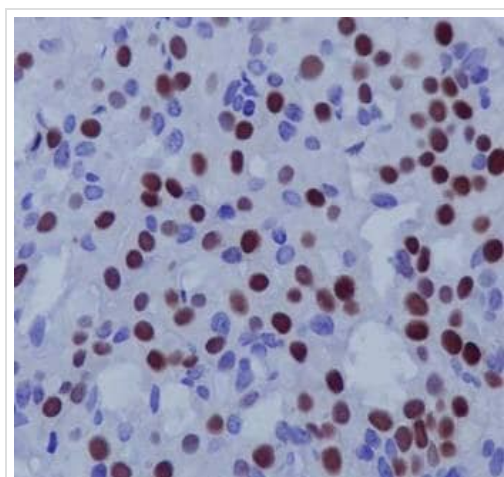


ChIC/CUT&RUN sequencing - Anti-Estrogen  
Receptor alpha antibody [EPR4097] (ab108398)

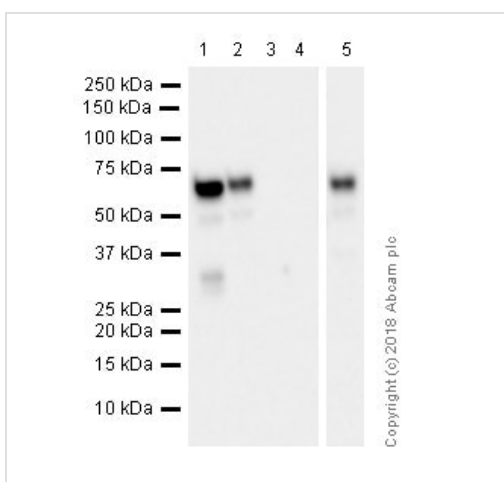
ChIC/CUT&RUN was performed using a pAG-MNase at a final concentration of 700 ng/ $\mu$ L,  $2.5 \times 10^5$  MCF7 (Human breast adenocarcinoma epithelial cell) cells treated with phenol red free medium and 5% charcoal stripped FBS for 3 days than treated with  $\beta$ -estradiol (10 nM 45 min) and 5  $\mu$ g of ab108398 [EPR4097]. The resulting DNA was sequenced on the Illumina NovaSeq 6000 to a depth of 10 million reads. The negative IgG control **ab172730** is also shown. The University of Geneva owns patents relevant to ChIC (Chromatin Immuno-Cleavage) methods.



ChIC/CUT&RUN sequencing - Anti-Estrogen  
Receptor alpha antibody [EPR4097] (ab108398)



Immunohistochemistry (Formalin/PFA-fixed paraffin-  
embedded sections) - Anti-Estrogen Receptor alpha  
antibody [EPR4097] (ab108398)



Western blot - Anti-Estrogen Receptor alpha  
antibody [EPR4097] (ab108398)

ChIC/CUT&RUN was performed using a pAG-MNase at a final concentration of 700 ng/ $\mu$ L,  $2.5 \times 10^5$  MCF7 (Human breast adenocarcinoma epithelial cell) cells treated with phenol red free medium and 5% charcoal stripped FBS for 3 days than treated with  $\beta$ -estradiol (10 nM 45 min) and 5  $\mu$ g of ab108398 [EPR4097]. The resulting DNA was sequenced on the Illumina NovaSeq 6000 to a depth of 10 million reads. The negative IgG control **ab172730** is also shown. The University of Geneva owns patents relevant to ChIC (Chromatin Immuno-Cleavage) methods.

Immunohistochemistry (Formalin/PFA-fixed paraffin-embedded sections) analysis of human breast tissue labelling Estrogen Receptor alpha with purified ab108398 at 1/250. Heat mediated antigen retrieval was performed using Tris/EDTA buffer pH 9. A prediluted HRP-polymer conjugated anti-rabbit IgG was used as the secondary antibody. Counterstained with Hematoxylin.

**All lanes :** Anti-Estrogen Receptor alpha antibody [EPR4097]  
(ab108398) at 1/2000 dilution

**Lane 1 :** MCF7 (Human breast adenocarcinoma epithelial cell).  
Whole cell lysates

**Lane 2 :** T-47D (human mammary gland ductal carcinoma  
epithelial cell). Whole cell lysates

**Lane 3 :** MDA-MB231 (Human breast adenocarcinoma epithelial  
cell) Whole cell lysates (Negative control)

**Lane 4 :** HepG2 (Human hepatocellular carcinoma epithelial cell)  
Whole cell lysates (Negative control)

**Lane 5 :** Human uterus whole tissue lysate

Lysates/proteins at 20  $\mu$ g per lane.

## Secondary

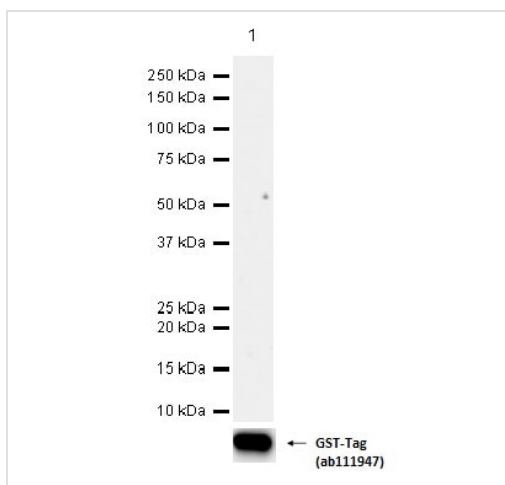
**All lanes :** Goat Anti-Rabbit IgG H&L (HRP) ([ab97051](#)) at 1/20000 dilution

**Predicted band size:** 66 kDa

**Observed band size:** 68 kDa

**Exposure time:** 10 seconds

Blocking and diluting buffer: 5% NFDM/TBST



Western blot - Anti-Estrogen Receptor alpha antibody [EPR4097] (ab108398)

Anti-Estrogen Receptor alpha antibody [EPR4097] (ab108398) at 1/1000 dilution + GST-Tagged Recombinant Human Estrogen Receptor beta (aa 1 to 323) protein 100ng

## Secondary

Goat Anti-Rabbit IgG H&L (HRP) ([ab97051](#)) at 1/20000 dilution

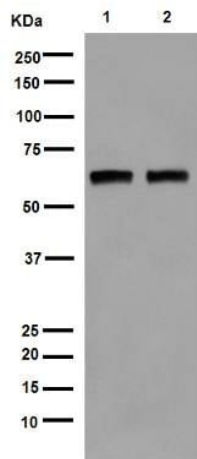
**Predicted band size:** 66 kDa

**Exposure time:** 180 seconds

Blocking/Diluting buffer and concentration: 5% NFDM/TBST

Lane 1: Recombinant Human Estrogen Receptor beta (aa 1 to 323) protein, (Cat#: [ab158385](#))

There is no cross-reactivity between ab108398 and ER beta protein.



Western blot - Anti-Estrogen Receptor alpha antibody [EPR4097] (ab108398)

**All lanes** : purified at 1/2000 dilution

**Lane 1** : MCF-7 cell lysate

**Lane 2** : T47-D cell lysate

Lysates/proteins at 20 µg per lane.

#### Secondary

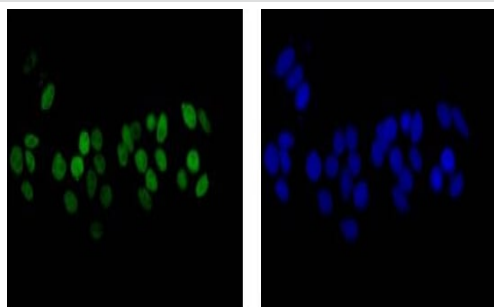
**All lanes** : Peroxidase-conjugated goat anti-rabbit IgG (H+L) at 1/1000 dilution

**Predicted band size:** 66 kDa

**Observed band size:** 67 kDa

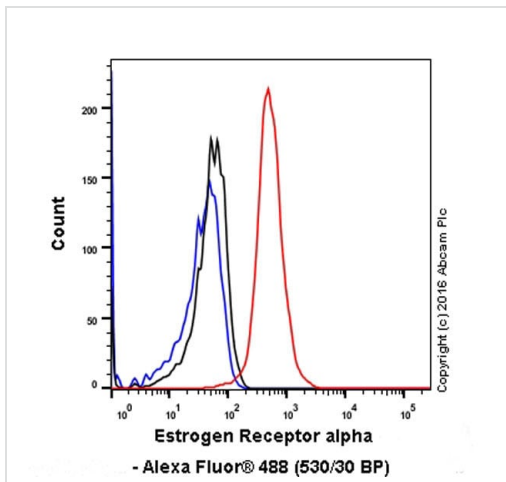
Blocking buffer and concentration: 5% NFDM/TBST.

Diluting buffer and concentration: 5% NFDM /TBST.



Immunocytochemistry/ Immunofluorescence - Anti-Estrogen Receptor alpha antibody [EPR4097] (ab108398)

Immunocytochemistry/Immunofluorescence analysis of MCF-7 cells labelling Estrogen Receptor alpha (green) with purified ab108398 at 1/200. Cells were fixed with 4% paraformaldehyde. An Alexa Fluor® 488-conjugated goat anti-rabbit IgG (1/200) was used as the secondary antibody. Counterstained with DAPI (blue).

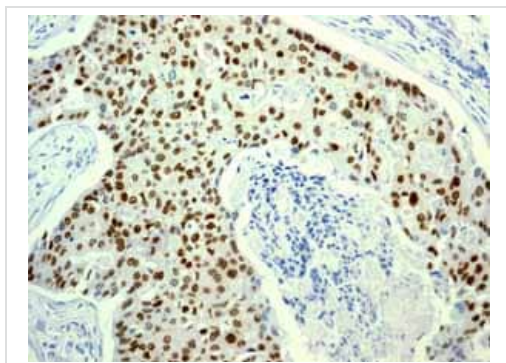


Flow Cytometry (Intracellular) - Anti-Estrogen Receptor alpha antibody [EPR4097] (ab108398)

ab108398 staining Estrogen Receptor alpha in the human cell line MCF-7 (human breast carcinoma) by intracellular flow cytometry. Cells were fixed with 4% paraformaldehyde, permeabilized with 90% methanol and the sample was incubated with the primary antibody at a dilution of 1/20. A goat anti rabbit IgG (Alexa Fluor® 488) at a dilution of 1/2000 was used as the secondary antibody.

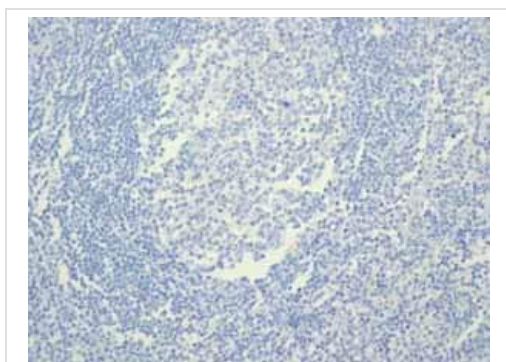
Isotype control: Rabbit monoclonal IgG (Black)

Unlabelled control: Cell without incubation with primary antibody and secondary antibody (Blue)



Immunohistochemistry (Formalin/PFA-fixed paraffin-embedded sections) - Anti-Estrogen Receptor alpha antibody [EPR4097] (ab108398)

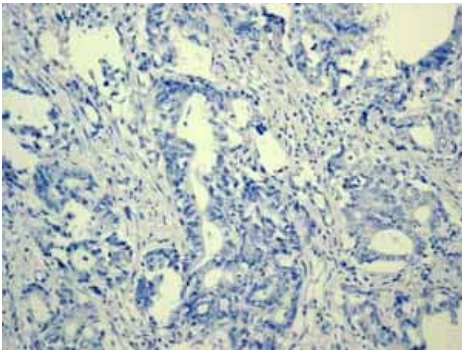
Immunohistochemistry (Formalin/PFA-fixed paraffin-embedded sections) analysis of human breast ductal infiltrating carcinoma tissue labelling Estrogen Receptor alpha with unpurified ab108398.



Immunohistochemistry (Formalin/PFA-fixed paraffin-embedded sections) - Anti-Estrogen Receptor alpha antibody [EPR4097] (ab108398)

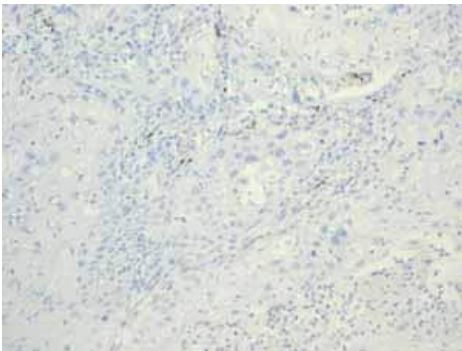
Immunohistochemistry (Formalin/PFA-fixed paraffin-embedded sections) analysis of human normal tonsil tissue. Unpurified ab108398 shows negative staining.





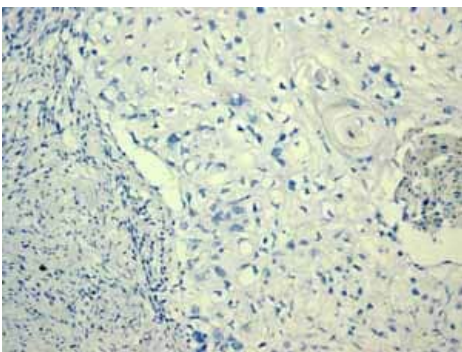
Immunohistochemistry (Formalin/PFA-fixed paraffin-embedded sections) - Anti-Estrogen Receptor alpha antibody [EPR4097] (ab108398)

Immunohistochemistry (Formalin/PFA-fixed paraffin-embedded sections) analysis of human colonic adenocarcinoma tissue. Unpurified ab108398 shows negative staining.



Immunohistochemistry (Formalin/PFA-fixed paraffin-embedded sections) - Anti-Estrogen Receptor alpha antibody [EPR4097] (ab108398)

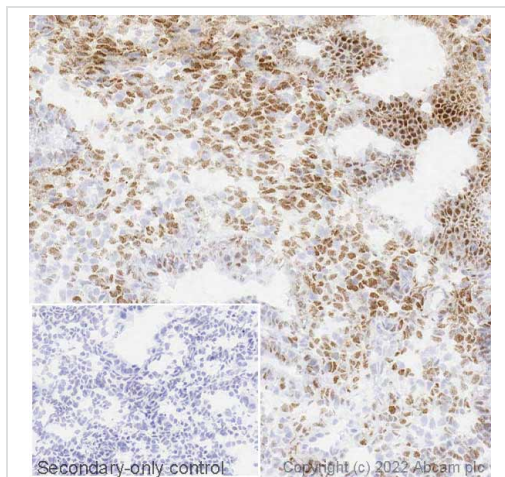
Immunohistochemistry (Formalin/PFA-fixed paraffin-embedded sections) analysis of human lung adenocarcinoma tissue. Unpurified ab108398 shows negative staining.



Immunohistochemistry (Formalin/PFA-fixed paraffin-embedded sections) - Anti-Estrogen Receptor alpha antibody [EPR4097] (ab108398)

Immunohistochemistry (Formalin/PFA-fixed paraffin-embedded sections) analysis of human cervical carcinoma tissue. Unpurified ab108398 shows negative staining.



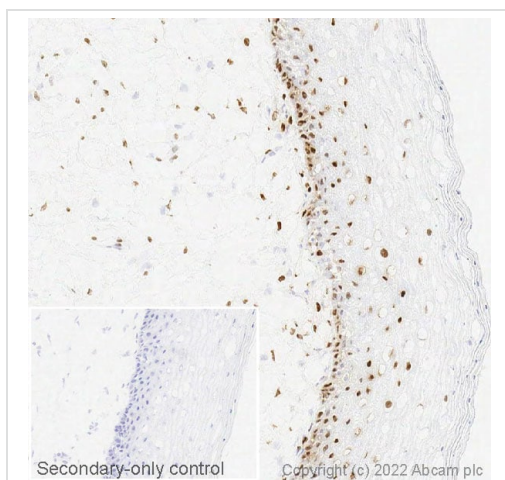


Immunohistochemistry (Frozen sections) - Anti-Estrogen Receptor alpha antibody [EPR4097] (ab108398)

IHC image of Estrogen Receptor alpha staining in a section of frozen human uterus\* performed on a Leica Biosystems BOND® RX instrumen using the standard protocol. The section was fixed in 10% paraformaldehyde (10 min) prior to staining. The section was incubated with ab108398, 5 ug/ml, for 15 mins at room temperature and detected using an HRP conjugated compact polymer system. DAB was used as the chromogen. The section was then counterstained with haematoxylin and mounted with DPX. The inset secondary-only control image is taken from an identical assay without primary antibody.

For other IHC staining systems (automated and non-automated) customers should optimize variable parameters such as antigen retrieval conditions, primary antibody concentration and antibody incubation times.

\*Tissue obtained from the Human Research Tissue Bank, supported by the NIHR Cambridge Biomedical Research Centre.

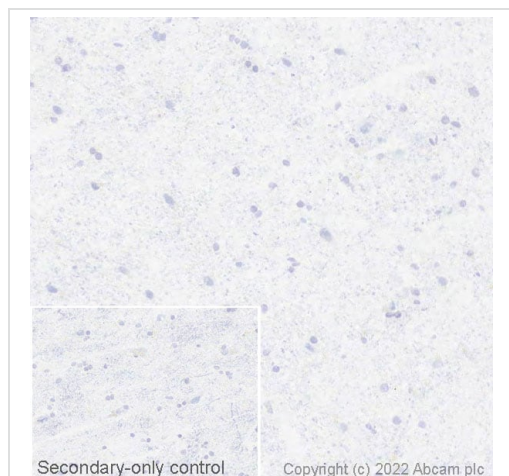


Immunohistochemistry (Frozen sections) - Anti-Estrogen Receptor alpha antibody [EPR4097] (ab108398)

IHC image of Estrogen Receptor alpha staining in a section of frozen human cervix\* performed on a Leica Biosystems BOND® RX instrumen using the standard protocol. The section was fixed in 10% paraformaldehyde (10 min) prior to staining. The section was incubated with ab108398, 5 ug/ml, for 15 mins at room temperature and detected using an HRP conjugated compact polymer system. DAB was used as the chromogen. The section was then counterstained with haematoxylin and mounted with DPX. The inset secondary-only control image is taken from an identical assay without primary antibody.

For other IHC staining systems (automated and non-automated) customers should optimize variable parameters such as antigen retrieval conditions, primary antibody concentration and antibody incubation times.

\*Tissue obtained from the Human Research Tissue Bank, supported by the NIHR Cambridge Biomedical Research Centre.



Immunohistochemistry (Frozen sections) - Anti-Estrogen Receptor alpha antibody [EPR4097] (ab108398)

**Negative control image:** IHC image of Estrogen Receptor alpha staining in a section of frozen human hippocampus\* performed on a Leica Biosystems BOND® RX instrument using the standard protocol. The section was fixed in 10% paraformaldehyde (10 min) prior to staining. The section was incubated with ab108398, 5 µg/ml, for 15 mins at room temperature and detected using an HRP conjugated compact polymer system. DAB was used as the chromogen. The section was then counterstained with haematoxylin and mounted with DPX. The inset secondary-only control image is taken from an identical assay without primary antibody.

For other IHC staining systems (automated and non-automated) customers should optimize variable parameters such as antigen retrieval conditions, primary antibody concentration and antibody incubation times.

\*Tissue obtained from the Human Research Tissue Bank, supported by the NIHR Cambridge Biomedical Research Centre.

Why choose a recombinant antibody?

**Research with confidence**  
Consistent and reproducible results

**Long-term and scalable supply**  
Recombinant technology

**Success from the first experiment**  
Confirmed specificity

**Ethical standards compliant**  
Animal-free production

Anti-Estrogen Receptor alpha antibody [EPR4097] (ab108398)

**Please note:** All products are "FOR RESEARCH USE ONLY. NOT FOR USE IN DIAGNOSTIC PROCEDURES"

**Our Abpromise to you: Quality guaranteed and expert technical support**

- Replacement or refund for products not performing as stated on the datasheet
- Valid for 12 months from date of delivery
- Response to your inquiry within 24 hours
- We provide support in Chinese, English, French, German, Japanese and Spanish
- Extensive multi-media technical resources to help you
- We investigate all quality concerns to ensure our products perform to the highest standards

If the product does not perform as described on this datasheet, we will offer a refund or replacement. For full details of the Abpromise, please visit <https://www.abcam.cn/abpromise> or contact our technical team.

#### **Terms and conditions**

---

- Guarantee only valid for products bought direct from Abcam or one of our authorized distributors