

Anti-ESE1 antibody [EPESER1] ab133621

重组 RabMAb

4 References **3 图像**

概述

产品名称	Anti-ESE1抗体[EPESER1]
描述	兔单克隆抗体[EPESER1] to ESE1
宿主	Rabbit
经测试应用	适用于: WB, Flow Cyt (Intra) 不适用于: ICC/IF, IHC-P or IP
种属反应性	与反应: Mouse, Rat, Human
免疫原	Recombinant full length protein corresponding to Human ESE1 aa 1 to the C-terminus.
阳性对照	Human uterus, fetal lung, A431, C6, Raw 264.7, PC-12, NIH3T3, and SKBR-3 cell lysates, A431 cells
常规说明	<p>This antibody was developed as part of a collaboration with the lab of Jim Hu at the University of Toronto.</p> <p>This product is a recombinant monoclonal antibody, which offers several advantages including:</p> <ul style="list-style-type: none">- High batch-to-batch consistency and reproducibility- Improved sensitivity and specificity- Long-term security of supply- Animal-free production <p>For more information see here.</p> <p>Our RabMAb[®] technology is a patented hybridoma-based technology for making rabbit monoclonal antibodies. For details on our patents, please refer to RabMAb[®] patents.</p>

性能

形式	Liquid
存放说明	Shipped at 4°C. Store at -20°C. Stable for 12 months at -20°C.
存储溶液	pH: 7.20 Preservative: 0.01% Sodium azide Constituents: 9% PBS, 40% Glycerol (glycerin, glycerine), 0.05% BSA, 50% Tissue culture supernatant
纯度	Protein A purified
克隆	单克隆

克隆编号 EPESER1

同种型 IgG

应用

The Abpromise guarantee **Abpromise™** 承诺保证使用 ab133621 于以下的经测试应用

“应用说明”部分 下显示的仅为推荐的起始稀释度;实际最佳的稀释度/浓度应由使用者检定。

应用	Ab评论	说明
WB		1/1000 - 1/10000. Detects a band of approximately 47 kDa (predicted molecular weight: 41 kDa).
Flow Cyt (Intra)		1/100 - 1/10000. ab172730 - Rabbit monoclonal IgG, is suitable for use as an isotype control with this antibody.

应用说明 Is unsuitable for ICC/IF, IHC-P or IP.

靶标

功能 Transcriptional activator that binds and transactivates ETS sequences containing the consensus nucleotide core sequence GGA[AT]. Acts synergistically with POU2F3 to transactivate the SPRR2A promoter and with RUNX1 to transactivate the ANGPT1 promoter. Also transactivates collagenase, CCL20, CLND7, FLG, KRT8, NOS2, PTGS2, SPRR2B, TGFBR2 and TGM3 promoters. Represses KRT4 promoter activity. Involved in mediating vascular inflammation. May play an important role in epithelial cell differentiation and tumorigenesis. May be a critical downstream effector of the ERBB2 signaling pathway. May be associated with mammary gland development and involution. Plays an important role in the regulation of transcription with TATA-less promoters in preimplantation embryos, which is essential in preimplantation development.

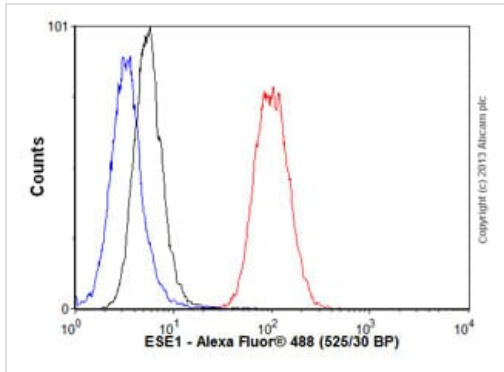
组织特异性 Expressed exclusively in tissues containing a high content of terminally differentiated epithelial cells including mammary gland, colon, trachea, kidney, prostate, uterus, stomach and skin.

序列相似性 Belongs to the ETS family.
Contains 1 ETS DNA-binding domain.
Contains 1 PNT (pointed) domain.

结构域 the 9aaTAD motif is a transactivation domain present in a large number of yeast and animal transcription factors.

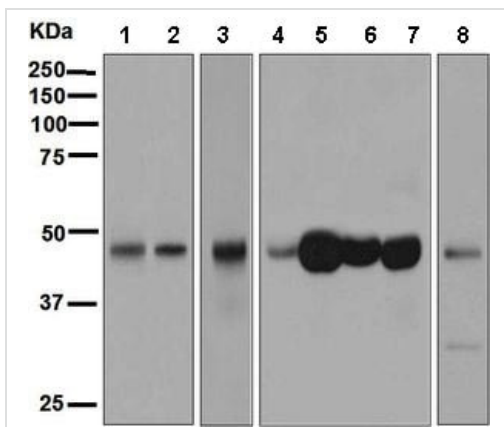
细胞定位 Cytoplasm. Nucleus. Localizes to the cytoplasm where it has been shown to transform MCF-12A mammary epithelial cells via a novel cytoplasmic mechanism. Also transiently expressed and localized to the nucleus where it induces apoptosis in non-transformed breast epithelial cells MCF-10A and MCF-12A via a transcription-dependent mechanism.

图片



Flow Cytometry (Intracellular) - Anti-ESE1 antibody [EPESER1] (ab133621)

Overlay histogram showing A431 cells stained with ab133621 (red line). The cells were fixed with 80% methanol (5 min) and then permeabilized with 0.1% PBS-Tween for 20 min. The cells were then incubated in 1x PBS / 10% normal goat serum / 0.3M glycine to block non-specific protein-protein interactions followed by the antibody (ab133621, 1/10000 dilution) for 30 min at 22°C. The secondary antibody used was Alexa Fluor[®] 488 goat anti-rabbit IgG (H&L) ([ab150077](#)) at 1/2000 dilution for 30 min at 22°C. Isotype control antibody (black line) was rabbit IgG (monoclonal) (0.1µg/1x10⁶ cells) used under the same conditions. Unlabelled sample (blue line) was also used as a control. Acquisition of >5,000 events were collected using a 20mW Argon ion laser (488nm) and 525/30 bandpass filter.



Western blot - Anti-ESE1 antibody [EPESER1] (ab133621)

All lanes : Anti-ESE1 antibody [EPESER1] (ab133621) at 1/1000 dilution

Lane 1 : Human uterus cell lysate

Lane 2 : Fetal lung cell lysate

Lane 3 : A431 cell lysate

Lane 4 : C6 cell lysate

Lane 5 : RAW 264.7 cell lysate

Lane 6 : PC12 cell lysate

Lane 7 : NIH3T3 cell lysate

Lane 8 : SKBR-3 cell lysate

Lysates/proteins at 10 µg per lane.

Secondary

All lanes : HRP labelled goat anti-rabbit at 1/2000 dilution

Predicted band size: 41 kDa

Observed band size: 47 kDa

Why choose a recombinant antibody?



Research with confidence
Consistent and reproducible results



Long-term and scalable supply
Recombinant technology



Success from the first experiment
Confirmed specificity



Ethical standards compliant
Animal-free production

Anti-ESE1 antibody [EPESER1] (ab133621)

Please note: All products are "FOR RESEARCH USE ONLY. NOT FOR USE IN DIAGNOSTIC PROCEDURES"

Our Abpromise to you: Quality guaranteed and expert technical support

- Replacement or refund for products not performing as stated on the datasheet
- Valid for 12 months from date of delivery
- Response to your inquiry within 24 hours
- We provide support in Chinese, English, French, German, Japanese and Spanish
- Extensive multi-media technical resources to help you
- We investigate all quality concerns to ensure our products perform to the highest standards

If the product does not perform as described on this datasheet, we will offer a refund or replacement. For full details of the Abpromise, please visit <https://www.abcam.cn/abpromise> or contact our technical team.

Terms and conditions

- Guarantee only valid for products bought direct from Abcam or one of our authorized distributors