


### Anti-ERp29 antibody [EPR12499(B)] ab176573

敲除验证
重组
RabMAb

[5 References](#)
[6 图像](#)

#### 概述

<b>产品名称</b>	Anti-ERp29抗体[EPR12499(B)]
<b>描述</b>	兔单克隆抗体[EPR12499(B)] to ERp29
<b>宿主</b>	Rabbit
<b>经测试应用</b>	<b>适用于:</b> IHC-P, WB, ICC/IF <b>不适用于:</b> Flow Cyt or IP
<b>种属反应性</b>	<b>与反应:</b> Human  <b>预测可用于:</b> Mouse, Rat, Chicken, Cow 
<b>免疫原</b>	Synthetic peptide within Human ERp29 aa 50-150 (internal sequence) (Cysteine residue). The exact sequence is proprietary. Database link: <a href="#">P30040</a>
<b>阳性对照</b>	WB: HEK293T, HeLa, HepG2, MCF7 and OVCAR-3 cell lysates. ICC/IF: HepG2 cells. IHC-P: Human kidney and liver tissues.
<b>常规说明</b>	This product is a recombinant monoclonal antibody, which offers several advantages including: <ul style="list-style-type: none"> <li>- High batch-to-batch consistency and reproducibility</li> <li>- Improved sensitivity and specificity</li> <li>- Long-term security of supply</li> <li>- Animal-free production</li> </ul> For more information <a href="#">see here</a> .  Our RabMAb <sup>®</sup> technology is a patented hybridoma-based technology for making rabbit monoclonal antibodies. For details on our patents, please refer to <a href="#">RabMAb<sup>®</sup> patents</a> .

#### 性能

<b>形式</b>	Liquid
<b>存放说明</b>	Shipped at 4°C. Store at +4°C short term (1-2 weeks). Upon delivery aliquot. Store at -20°C long term. Avoid freeze / thaw cycle.
<b>存储溶液</b>	pH: 7.20 Preservative: 0.01% Sodium azide Constituents: 9% PBS, 40% Glycerol (glycerin, glycerine), 0.05% BSA, 50% Tissue culture supernatant

纯度 Tissue culture supernatant  
克隆 单克隆  
克隆编号 EPR12499(B)  
同种型 IgG

## 应用

**The Abpromise guarantee** **Abpromise™** 承诺保证使用 ab176573 于以下的经测试应用

“应用说明”部分 下显示的仅为推荐的起始稀释度；实际最佳的稀释度/浓度应由使用者检定。

应用	Ab评论	说明
IHC-P		1/50 - 1/100. Perform heat mediated antigen retrieval with citrate buffer pH 6 before commencing with IHC staining protocol.
WB		1/1000 - 1/5000. Predicted molecular weight: 29 kDa.
ICC/IF		1/100 - 1/250.

应用说明 Is unsuitable for Flow Cyt or IP.

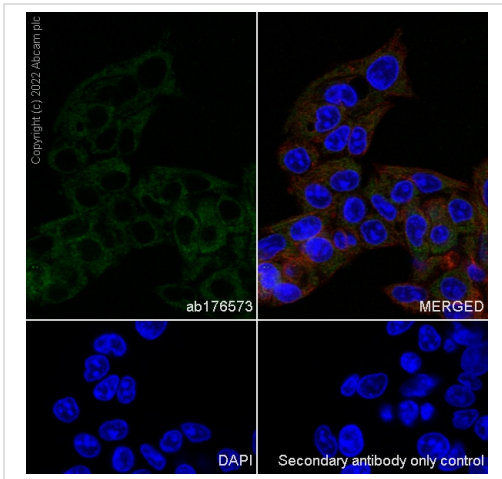
## 靶标

功能 Does not seem to be a disulfide isomerase. Plays an important role in the processing of secretory proteins within the endoplasmic reticulum (ER), possibly by participating in the folding of proteins in the ER.

组织特异性 Ubiquitous. Mostly expressed in secretory tissues.

细胞定位 Endoplasmic reticulum lumen. Melanosome. Identified by mass spectrometry in melanosome fractions from stage I to stage IV.

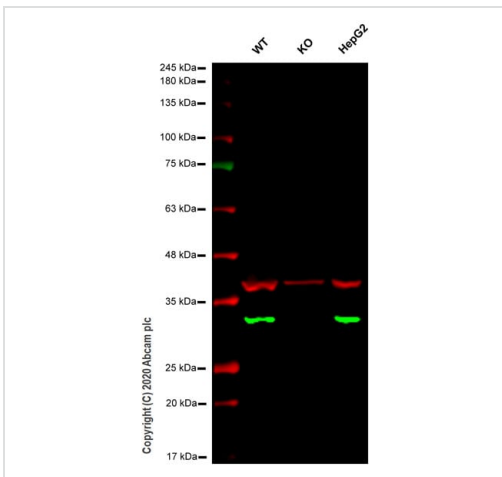
## 图片



Immunocytochemistry/ Immunofluorescence - Anti-ERp29 antibody [EPR12499(B)] (ab176573)

Immunocytochemistry/ Immunofluorescence analysis of HepG2 (human hepatocellular carcinoma epithelial cell) cells labeling ERp29 with ab176573 at 1:50 dilution followed by **ab150081** Goat Anti-Rabbit IgG H&L (Alexa Fluor® 488) preadsorbed secondary antibody at 1/1000 dilution (2 µg/ml). Cells were fixed in 100% methanol and permeabilized with 0.1% tritonX-100. Cells were counterstained with **ab195889** Anti-alpha Tubulin mouse monoclonal antibody - Microtubule Marker (Alexa Fluor® 594) at 1:200 dilution (2.5 µg/ml). DAPI was used as nuclear counterstain. PBS instead of the primary antibody was used as the secondary antibody only control.

Confocal image showing cytoplasmic staining in HepG2 cell line. Image was taken with a confocal microscope (Leica-Microsystems, TCS SP8).



Western blot - Anti-ERp29 antibody [EPR12499(B)] (ab176573)

**All lanes** : Anti-ERp29 antibody [EPR12499(B)] (ab176573) at 1/1000 dilution

**Lane 1** : Wild-type HEK293T cell lysate

**Lane 2** : ERP29 knockout HEK293T cell lysate

**Lane 3** : HepG2 cell lysate

Lysates/proteins at 20 µg per lane.

Performed under reducing conditions.

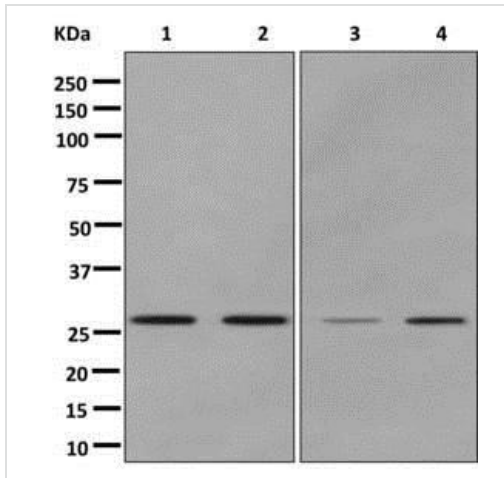
**Predicted band size:** 29 kDa

**Observed band size:** 29 kDa

**Lanes 1-3:** Merged signal (red and green). Green - ab176573 observed at 29 kDa. Red - loading control, **ab8245** observed at 37 kDa.

ab176573 Anti-ERp29 antibody [EPR12499(B)] was shown to specifically react with ERp29 in wild-type HEK293T cells. Loss of signal was observed when knockout cell line **ab266543** (knockout cell lysate **ab257188**) was used. Wild-type and ERp29 knockout samples were subjected to SDS-PAGE. ab176573 and Anti-GAPDH antibody [6C5] - Loading Control (**ab8245**) were incubated overnight at 4°C at 1 in 1000 dilution and 1 in 20000 dilution respectively. Blots were developed with Goat anti-Rabbit IgG H&L (IRDye® 800CW) preadsorbed (**ab216773**) and Goat anti-Mouse IgG H&L (IRDye® 680RD) preadsorbed (**ab216776**) secondary

antibodies at 1 in 10000 dilution for 1 hour at room temperature before imaging.



Western blot - Anti-ERp29 antibody [EPR12499(B)] (ab176573)

**All lanes** : Anti-ERp29 antibody [EPR12499(B)] (ab176573) at 1/1000 dilution

**Lane 1** : HepG2 cell lysate

**Lane 2** : MCF7 cell lysate

**Lane 3** : OVCAR-3 cell lysate

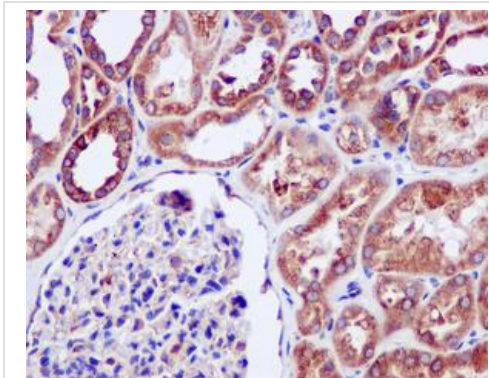
**Lane 4** : HeLa cell lysate

Lysates/proteins at 10 µg per lane.

#### Secondary

**All lanes** : Goat anti-rabbit HRP at 1/2000 dilution

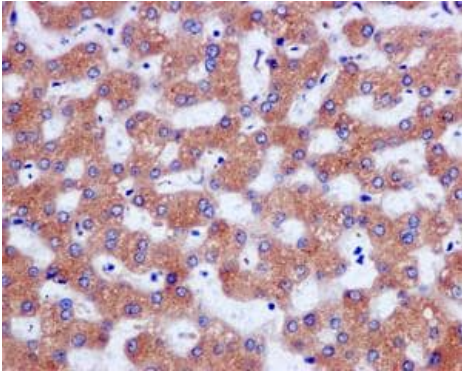
**Predicted band size:** 29 kDa



Immunohistochemistry (Formalin/PFA-fixed paraffin-embedded sections) - Anti-ERp29 antibody [EPR12499(B)] (ab176573)

Immunohistochemical analysis of paraffin-embedded Human kidney tissue labeling ERp29 using ab176573 at a 1/50 dilution.

Perform heat mediated antigen retrieval with citrate buffer pH 6 before commencing with IHC staining protocol.



Immunohistochemical analysis of paraffin-embedded Human liver tissue labeling ERp29 using ab176573 at a 1/50 dilution.

Perform heat mediated antigen retrieval with citrate buffer pH 6 before commencing with IHC staining protocol.

Immunohistochemistry (Formalin/PFA-fixed paraffin-embedded sections) - Anti-ERp29 antibody [EPR12499(B)] (ab176573)

### Why choose a recombinant antibody?

 <p><b>Research with confidence</b> Consistent and reproducible results</p>	 <p><b>Long-term and scalable supply</b> Recombinant technology</p>
 <p><b>Success from the first experiment</b> Confirmed specificity</p>	 <p><b>Ethical standards compliant</b> Animal-free production</p>

Anti-ERp29 antibody [EPR12499(B)] (ab176573)

**Please note:** All products are "FOR RESEARCH USE ONLY. NOT FOR USE IN DIAGNOSTIC PROCEDURES"

### Our Abpromise to you: Quality guaranteed and expert technical support

- Replacement or refund for products not performing as stated on the datasheet
- Valid for 12 months from date of delivery
- Response to your inquiry within 24 hours
- We provide support in Chinese, English, French, German, Japanese and Spanish
- Extensive multi-media technical resources to help you
- We investigate all quality concerns to ensure our products perform to the highest standards

If the product does not perform as described on this datasheet, we will offer a refund or replacement. For full details of the Abpromise, please visit <https://www.abcam.cn/abpromise> or contact our technical team.

### Terms and conditions

- Guarantee only valid for products bought direct from Abcam or one of our authorized distributors