

Anti-ErbB3 / HER3 antibody [E186] ab32121

敲除验证
重组
RabMAb

★★★★★
[2 Abreviews](#)
[18 References](#)
[5 图像](#)

概述

产品名称	Anti-ErbB3 / HER3抗体[E186]
描述	兔单克隆抗体[E186] to ErbB3 / HER3
宿主	Rabbit
特异性	ab32121 recognises ErbB3/HER3. WB samples: should avoid boiling
经测试应用	适用于: WB 不适用于: ICC/IF, IHC or IP
种属反应性	与反应: Rat, Human
免疫原	Synthetic peptide within Human ErbB3/ HER3 aa 1300 to the C-terminus (C terminal). The exact sequence is proprietary. Database link: P21860
阳性对照	MCF-7 cell lysate.
常规说明	This product is a recombinant monoclonal antibody, which offers several advantages including: <ul style="list-style-type: none"> - High batch-to-batch consistency and reproducibility - Improved sensitivity and specificity - Long-term security of supply - Animal-free production For more information see here . Our RabMAb [®] technology is a patented hybridoma-based technology for making rabbit monoclonal antibodies. For details on our patents, please refer to RabMAb[®] patents .

性能

形式	Liquid
存放说明	Shipped at 4°C. Store at +4°C short term (1-2 weeks). Upon delivery aliquot. Store at -20°C. Avoid freeze / thaw cycle.
存储溶液	pH: 7.2 Preservative: 0.01% Sodium azide Constituents: 40% Glycerol, 0.05% BSA, 59% PBS
纯度	Protein A purified
克隆	单克隆

克隆编号 E186
同种型 IgG

应用

The Abpromise guarantee **Abpromise™**承诺保证使用ab32121于以下的经测试应用

“应用说明”部分下显示的仅为推荐的起始稀释度;实际最佳的稀释度/浓度应由使用者检定。

应用	Ab评论	说明
WB	★★★★★ (2)	1/500 - 1/1000. Detects a band of approximately 185 kDa (predicted molecular weight: 149 kDa).

应用说明 Is unsuitable for ICC/IF,IHC or IP.

靶标

功能 Binds and is activated by neuregulins and NTAK.

组织特异性 Epithelial tissues and brain.

疾病相关 Defects in ERBB3 are the cause of lethal congenital contracture syndrome type 2 (LCCS2) [MIM:607598]; also called Israeli Bedouin multiple contracture syndrome type A. LCCS2 is an autosomal recessive neurogenic form of a neonatally lethal arthrogyrosis that is associated with atrophy of the anterior horn of the spinal cord. The LCCS2 syndrome is characterized by multiple joint contractures, anterior horn atrophy in the spinal cord, and a unique feature of a markedly distended urinary bladder. The phenotype suggests a spinal cord neuropathic etiology.

序列相似性 Belongs to the protein kinase superfamily. Tyr protein kinase family. EGF receptor subfamily. Contains 1 protein kinase domain.

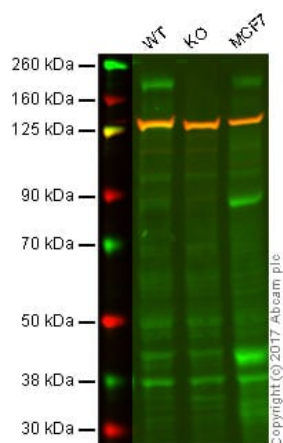
发展阶段 Overexpressed in a subset of human mammary tumors.

结构域 The cytoplasmic part of the receptor may interact with the SH2 or SH3 domains of many signal-transducing proteins.

翻译后修饰 Ligand-binding increases phosphorylation on tyrosine residues and promotes its association with the p85 subunit of phosphatidylinositol 3-kinase.

细胞定位 Secreted and Cell membrane.

图片



Western blot - Anti-ErbB3 / HER3 antibody [E186]
(ab32121)

Lane 1: Wild-type HAP1 whole cell lysate (20 µg)

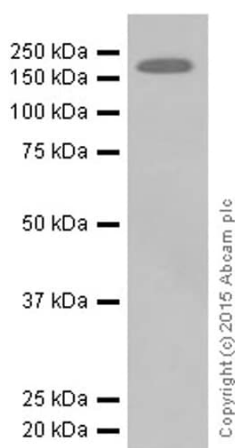
Lane 2: ERBB3 knockout HAP1 whole cell lysate (20 µg)

Lane 3: MCF7 whole cell lysate (20 µg)

Lanes 1 - 3: Merged signal (red and green). Green - ab32121 observed at 185 kDa. Red - loading control, [ab9484](#), observed at 37 kDa.

ab32121 was shown to specifically recognize ERBB3 in wild-type HAP1 cells along with additional cross-reactive bands. No band was observed when knock out samples were examined. Wild-type and ERBB3 knockout samples were subjected to SDS-PAGE.

Ab32121 and [ab18058](#) (Mouse anti Vinculin loading control) were incubated overnight at 4°C at 1/500 dilution and 1/20,000 dilution respectively. Blots were developed with Goat anti-Rabbit IgG H&L (IRDye® 800CW) preabsorbed ([ab216773](#)) and Goat anti-Mouse IgG H&L (IRDye® 680RD) preabsorbed ([ab216776](#)) secondary antibodies at 1/20,000 dilution for 1 hour at room temperature before imaging.



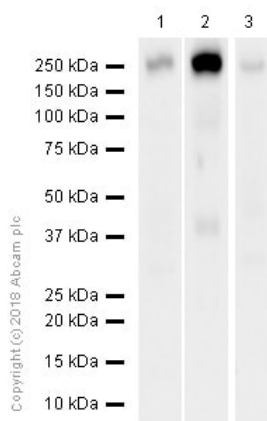
Western blot - Anti-ErbB3 / HER3 antibody [E186]
(ab32121)

Anti-ErbB3 / HER3 antibody [E186] (ab32121) at 1/1000 dilution + MDA-MB-435S (human ductal carcinoma) whole cell lysate at 10 µg

Secondary

Goat Anti-Rabbit IgG H&L (HRP) ([ab97051](#)) at 1/20000 dilution

Predicted band size: 149 kDa



Western blot - Anti-ErbB3 / HER3 antibody [E186] (ab32121)

All lanes : Anti-ErbB3 / HER3 antibody [E186] (ab32121) at 2.685 µg/ml (purified)

Lane 1 : MDA-MB-435S (human mammary gland ductal carcinoma melanocyte) whole cell lysate

Lane 2 : C6 (Rat glial tumor glial cell) whole cell lysate

Lane 3 : Rat brain lysate

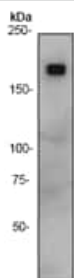
Lysates/proteins at 20 µg per lane.

Secondary

All lanes : Goat Anti-Rabbit IgG H&L (HRP) ([ab97051](#)) at 1/20000 dilution

Predicted band size: 149 kDa

Exposure time: 37 seconds







Western blot - Anti-ErbB3 / HER3 antibody [E186] (ab32121)

Anti-ErbB3 / HER3 antibody [E186] (ab32121) at 1/500 dilution (unpurified) + MCF-7 cell lysate

Predicted band size: 149 kDa

Observed band size: 185 kDa

Why choose a recombinant antibody?

 <p>Research with confidence Consistent and reproducible results</p>	 <p>Long-term and scalable supply Recombinant technology</p>
 <p>Success from the first experiment Confirmed specificity</p>	 <p>Ethical standards compliant Animal-free production</p>

Anti-ErbB3 / HER3 antibody [E186] (ab32121)

Please note: All products are "FOR RESEARCH USE ONLY. NOT FOR USE IN DIAGNOSTIC PROCEDURES"

Our Abpromise to you: Quality guaranteed and expert technical support

- Replacement or refund for products not performing as stated on the datasheet
- Valid for 12 months from date of delivery
- Response to your inquiry within 24 hours
- We provide support in Chinese, English, French, German, Japanese and Spanish
- Extensive multi-media technical resources to help you
- We investigate all quality concerns to ensure our products perform to the highest standards

If the product does not perform as described on this datasheet, we will offer a refund or replacement. For full details of the Abpromise, please visit <https://www.abcam.cn/abpromise> or contact our technical team.

Terms and conditions

- Guarantee only valid for products bought direct from Abcam or one of our authorized distributors