

Anti-EPS8 antibody [EPR6112] ab124882

重组 RabMAb

2 References **3 图像**

概述

产品名称	Anti-EPS8抗体[EPR6112]
描述	兔单克隆抗体[EPR6112] to EPS8
宿主	Rabbit
经测试应用	适用于: WB, IHC-P 不适用于: Flow Cyt or IP
种属反应性	与反应: Human
免疫原	Synthetic peptide within Human EPS8 aa 1-100 (N terminal). The exact sequence is proprietary.
阳性对照	HeLa, A375, 293T, and K562 cell lysates, Human kidney tissue
常规说明	<p>This product is a recombinant monoclonal antibody, which offers several advantages including:</p> <ul style="list-style-type: none">- High batch-to-batch consistency and reproducibility- Improved sensitivity and specificity- Long-term security of supply- Animal-free production <p>For more information see here.</p> <p>Our RabMAb[®] technology is a patented hybridoma-based technology for making rabbit monoclonal antibodies. For details on our patents, please refer to RabMAb[®] patents.</p> <p>Mouse, Rat: We have preliminary internal testing data to indicate this antibody may not react with these species. Please contact us for more information.</p>

性能

形式	Liquid
存放说明	Shipped at 4°C. Store at -20°C. Stable for 12 months at -20°C.
存储溶液	pH: 7.20 Preservative: 0.05% Sodium azide Constituents: 40% Glycerol (glycerin, glycerine), 9.85% Tris glycine, 50% Tissue culture supernatant
纯度	Protein A purified
克隆	单克隆

克隆编号 EPR6112
同种型 IgG

应用

The Abpromise guarantee **Abpromise™**承诺保证使用ab124882于以下的经测试应用

“应用说明”部分下显示的仅为推荐的起始稀释度;实际最佳的稀释度/浓度应由使用者检定。

应用	Ab评论	说明
WB		1/1000 - 1/10000. Detects a band of approximately 97 kDa (predicted molecular weight: 92 kDa).
IHC-P		1/100 - 1/250. Perform heat mediated antigen retrieval with citrate buffer pH 6 before commencing with IHC staining protocol. antigen retrieval is recommended.

应用说明 Is unsuitable for Flow Cyt or IP.

靶标

功能 Upon binding to EGF receptor enhances EGF-dependent mitogenic signals. Can bind multiple cellular targets.

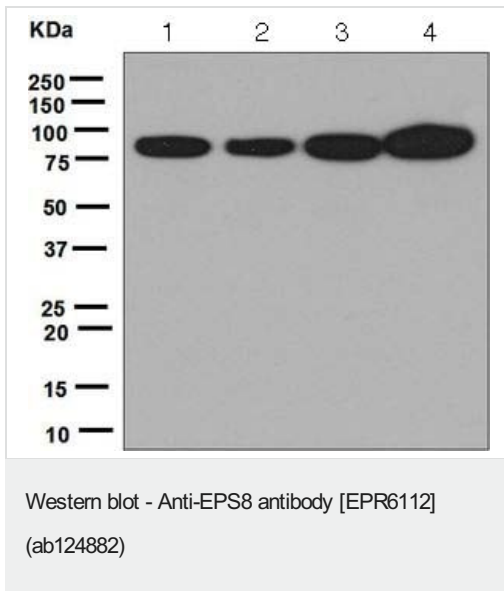
组织特异性 Expressed in all tissues analyzed, including heart, brain, placenta, lung, liver, skeletal muscle, kidney and pancreas. Expressed in all epithelial and fibroblastic lines examined and in some, but not all, hematopoietic cells.

序列相似性 Belongs to the EPS8 family.
 Contains 1 PH domain.
 Contains 1 SH3 domain.

结构域 The SH3 domain mediates interaction with SHB.

翻译后修饰 Phosphorylated by several receptor tyrosine kinases.

图片



All lanes : Anti-EPS8 antibody [EPR6112] (ab124882) at 1/1000 dilution

Lane 1 : HeLa cell lysate

Lane 2 : A375 cell lysate

Lane 3 : 293T cell lysate

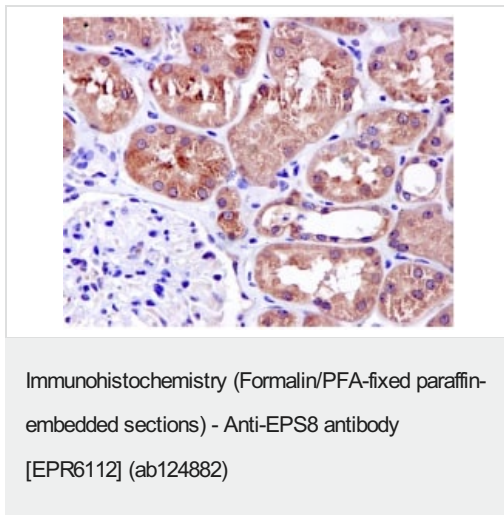
Lane 4 : K562 cell lysate

Lysates/proteins at 10 µg per lane.

Secondary

All lanes : HRP labelled goat anti-rabbit at 1/2000 dilution

Predicted band size: 92 kDa



Staining of EPS8 in Paraffin-embedded Human kidney tissue by Immunohistochemistry using ab124882 at a dilution of 1/100.

Perform heat mediated antigen retrieval with citrate buffer pH 6 before commencing with IHC staining protocol.

Why choose a recombinant antibody?

- Research with confidence**
Consistent and reproducible results
- Long-term and scalable supply**
Recombinant technology
- Success from the first experiment**
Confirmed specificity
- Ethical standards compliant**
Animal-free production

Anti-EPS8 antibody [EPR6112] (ab124882)

Please note: All products are "FOR RESEARCH USE ONLY. NOT FOR USE IN DIAGNOSTIC PROCEDURES"

Our Abpromise to you: Quality guaranteed and expert technical support

- Replacement or refund for products not performing as stated on the datasheet
- Valid for 12 months from date of delivery
- Response to your inquiry within 24 hours

- We provide support in Chinese, English, French, German, Japanese and Spanish
- Extensive multi-media technical resources to help you
- We investigate all quality concerns to ensure our products perform to the highest standards

If the product does not perform as described on this datasheet, we will offer a refund or replacement. For full details of the Abpromise, please visit <https://www.abcam.cn/abpromise> or contact our technical team.

Terms and conditions

- Guarantee only valid for products bought direct from Abcam or one of our authorized distributors