

Anti-EPF antibody [EPR4475] ab108611

重组 RabMAb

1 References 3 图像

概述

产品名称	Anti-EPF抗体[EPR4475]
描述	兔单克隆抗体[EPR4475] to EPF
宿主	Rabbit
经测试应用	适用于: Flow Cyt (Intra), WB 不适用于: ICC/IF or IHC-P
种属反应性	与反应: Human 预测可用于: Rat 
免疫原	Synthetic peptide. This information is proprietary to Abcam and/or its suppliers.
阳性对照	HeLa, HepG2, Raji, and Jurkat cell lysates. Permeabilized Jurkat cells.
常规说明	<p>This product is a recombinant monoclonal antibody, which offers several advantages including:</p> <ul style="list-style-type: none">- High batch-to-batch consistency and reproducibility- Improved sensitivity and specificity- Long-term security of supply- Animal-free production <p>For more information see here.</p> <p>Our RabMAb[®] technology is a patented hybridoma-based technology for making rabbit monoclonal antibodies. For details on our patents, please refer to RabMAb[®] patents.</p> <p>Mouse: We have preliminary internal testing data to indicate this antibody may not react with this species. Please contact us for more information.</p>

性能

形式	Liquid
存放说明	Shipped at 4°C. Store at -20°C. Stable for 12 months at -20°C.
存储溶液	pH: 7.20 Preservative: 0.05% Sodium azide Constituents: 0.1% BSA, 40% Glycerol (glycerin, glycerine), 9.85% Tris glycine, 50% Tissue culture supernatant
纯度	Tissue culture supernatant

克隆

单克隆

克隆编号

EPR4475

同种型

IgG

应用

The Abpromise guarantee

Abpromise™承诺保证使用ab108611于以下的经测试应用

“应用说明”部分 下显示的仅为推荐的起始稀释度;实际最佳的稀释度/浓度应由使用者检定。

应用	Ab评论	说明
Flow Cyt (Intra)		1/10 - 1/100. ab172730 - Rabbit monoclonal IgG, is suitable for use as an isotype control with this antibody.
WB		1/1000 - 1/10000. Detects a band of approximately 11 kDa (predicted molecular weight: 11 kDa).

应用说明

Is unsuitable for ICC/IF or IHC-P.

靶标

功能

Eukaryotic CPN10 homolog which is essential for mitochondrial protein biogenesis, together with CPN60. Binds to CPN60 in the presence of Mg-ATP and suppresses the ATPase activity of the latter.

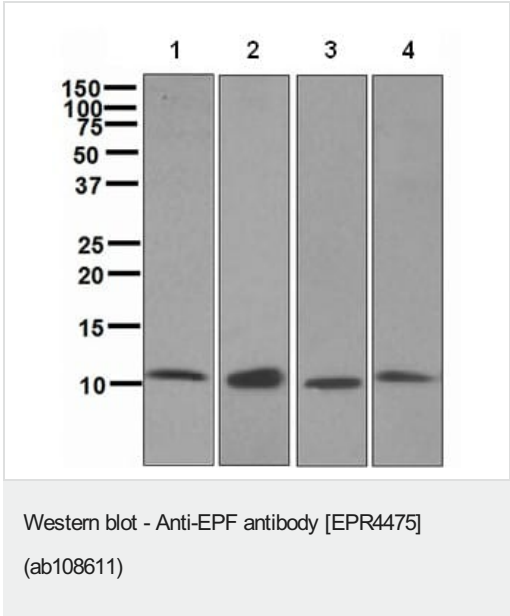
序列相似性

Belongs to the GroES chaperonin family.

细胞定位

Mitochondrion matrix.

图片

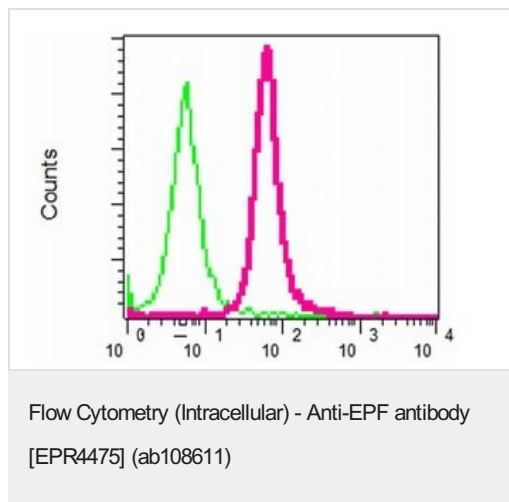


All lanes : Anti-EPF antibody [EPR4475] (ab108611) at 1/1000 dilution

Lane 1 : HeLa cell lysate
Lane 2 : HepG2 cell lysate
Lane 3 : Raji cell lysate
Lane 4 : Jurkat cell lysate





Lysates/proteins at 10 µg per lane.

Predicted band size: 11 kDa
Observed band size: 11 kDa



Intracellular flow cytometric analysis of permeabilized Jurkat cells using ab108611 at 1/10 (red) or a Rabbit IgG (negative) (green).

Why choose a recombinant antibody?

 <p>Research with confidence Consistent and reproducible results</p>	 <p>Long-term and scalable supply Recombinant technology</p>
 <p>Success from the first experiment Confirmed specificity</p>	 <p>Ethical standards compliant Animal-free production</p>

Anti-EPF antibody [EPR4475] (ab108611)

Please note: All products are "FOR RESEARCH USE ONLY. NOT FOR USE IN DIAGNOSTIC PROCEDURES"

Our Abpromise to you: Quality guaranteed and expert technical support

- Replacement or refund for products not performing as stated on the datasheet
- Valid for 12 months from date of delivery
- Response to your inquiry within 24 hours
- We provide support in Chinese, English, French, German, Japanese and Spanish
- Extensive multi-media technical resources to help you
- We investigate all quality concerns to ensure our products perform to the highest standards

If the product does not perform as described on this datasheet, we will offer a refund or replacement. For full details of the Abpromise, please visit <https://www.abcam.cn/abpromise> or contact our technical team.

Terms and conditions

- Guarantee only valid for products bought direct from Abcam or one of our authorized distributors