

Anti-EpCAM antibody [Ber-EP4] ab7504

★★★★★ [4 Abreviews](#) [23 References](#) [2 图像](#)

概述

产品名称	Anti-EpCAM抗体[Ber-EP4]
描述	小鼠单克隆抗体[Ber-EP4] to EpCAM
宿主	Mouse
特异性	Epithelial specific antigen is cell surface glycoprotein and is broadly distributed in epithelial cells and displays a highly conserved expression in carcinomas. Epithelial specific antigen has been know to play an important role as tumor-cell marker in lymph nodes from patients with esophageal carcinoma. Epithelial specific antigen can be used to distinguish between basal cell and basosquamous carcinomas and squamous cell carcinoma of the skin.
经测试应用	适用于: IHC-FoFr, IHC-P, IHC-Fr, ICC/IF
种属反应性	与反应: Human
免疫原	Tissue, cells or virus corresponding to Human EpCAM. MCF-7 cells.
阳性对照	Kidney tissue sections.
常规说明	<p>The Life Science industry has been in the grips of a reproducibility crisis for a number of years. Abcam is leading the way in addressing this with our range of recombinant monoclonal antibodies and knockout edited cell lines for gold-standard validation. Please check that this product meets your needs before purchasing.</p> <p>If you have any questions, special requirements or concerns, please send us an inquiry and/or contact our Support team ahead of purchase. Recommended alternatives for this product can be found below, along with publications, customer reviews and Q&As</p>

性能

形式	Liquid
存放说明	Shipped at 4°C. Store at +4°C short term (1-2 weeks). Store at -20°C or -80°C. Avoid freeze / thaw cycle.
存储溶液	<p>pH: 7.3</p> <p>Preservative: 0.05% Sodium azide</p> <p>Constituents: Tissue culture supernatant, 1% BSA</p>
纯度	Tissue culture supernatant
克隆	单克隆
克隆编号	Ber-EP4

同种型 IgG1
轻链类型 kappa

应用

The Abpromise guarantee **Abpromise™**承诺保证使用ab7504于以下的经测试应用

“应用说明”部分 下显示的仅为推荐的起始稀释度;实际最佳的稀释度/浓度应由使用者检定。

应用	Ab评论	说明
IHC-FoFr		Use at an assay dependent concentration.
IHC-P	★★★★★ (2)	1/50 - 1/150. Perform heat mediated antigen retrieval before commencing with IHC staining protocol.
IHC-Fr		Use at an assay dependent concentration.
ICC/IF	★★★★★ (1)	Use at an assay dependent concentration.

靶标

功能 May act as a physical homophilic interaction molecule between intestinal epithelial cells (IECs) and intraepithelial lymphocytes (IELs) at the mucosal epithelium for providing immunological barrier as a first line of defense against mucosal infection. Plays a role in embryonic stem cells proliferation and differentiation. Up-regulates the expression of FABP5, MYC and cyclins A and E.

组织特异性 Highly and selectively expressed by undifferentiated rather than differentiated embryonic stem cells (ESC). Levels rapidly diminish as soon as ESC's differentiate (at protein levels). Expressed in almost all epithelial cell membranes but not on mesodermal or neural cell membranes. Found on the surface of adenocarcinoma.

疾病相关 Defects in EPCAM are the cause of diarrhea type 5 (DIAR5) [MIM:613217]. It is an intractable diarrhea of infancy characterized by villous atrophy and absence of inflammation, with intestinal epithelial cell dysplasia manifesting as focal epithelial tufts in the duodenum and jejunum. Defects in EPCAM are a cause of hereditary non-polyposis colorectal cancer type 8 (HNPCC8) [MIM:613244]. HNPCC is a disease associated with marked increase in cancer susceptibility. It is characterized by a familial predisposition to early-onset colorectal carcinoma (CRC) and extra-colonic tumors of the gastrointestinal, urological and female reproductive tracts. HNPCC is reported to be the most common form of inherited colorectal cancer in the Western world. Clinically, HNPCC is often divided into two subgroups. Type I is characterized by hereditary predisposition to colorectal cancer, a young age of onset, and carcinoma observed in the proximal colon. Type II is characterized by increased risk for cancers in certain tissues such as the uterus, ovary, breast, stomach, small intestine, skin, and larynx in addition to the colon. Diagnosis of classical HNPCC is based on the Amsterdam criteria: 3 or more relatives affected by colorectal cancer, one a first degree relative of the other two; 2 or more generation affected; 1 or more colorectal cancers presenting before 50 years of age; exclusion of hereditary polyposis syndromes. The term 'suspected HNPCC' or 'incomplete HNPCC' can be used to describe families who do not or only partially fulfill the Amsterdam criteria, but in whom a genetic basis for colon cancer is strongly suspected. Note=HNPCC8 results from heterozygous deletion of 3-prime exons of EPCAM and intergenic regions directly upstream of MSH2, resulting in transcriptional

read-through and epigenetic silencing of MSH2 in tissues expressing EPCAM.

序列相似性

Belongs to the EPCAM family.

Contains 1 thyroglobulin type-1 domain.

翻译后修饰

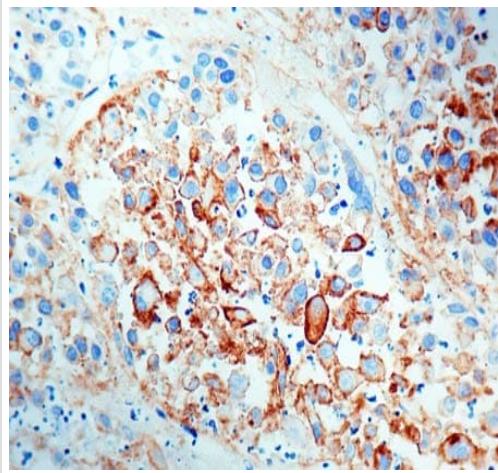
Hyperglycosylated in carcinoma tissue as compared with autologous normal epithelia.

Glycosylation at Asn-198 is crucial for protein stability.

细胞定位

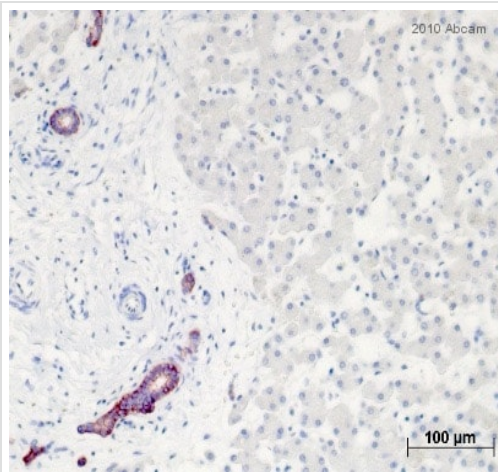
Lateral cell membrane. Cell junction > tight junction. Co-localizes with CLDN7 at the lateral cell membrane and tight junction.

图片



ab7504 staining EpCAM in formalin-fixed, paraffin-embedded Human breast carcinoma tissue by Immunohistochemistry. Staining was detected using DAB.

Immunohistochemistry (Formalin/PFA-fixed paraffin-embedded sections) - Anti-EpCAM antibody [Ber-EP4] (ab7504)



ab7504 staining EpCAM in Human liver tissue sections by Immunohistochemistry (IHC-P - paraformaldehyde-fixed, paraffin-embedded sections). Tissue was fixed with formaldehyde and blocked with 1% serum for 1 hour at 20°C; antigen retrieval was by heat mediation (microwave) in a commercial retrieval buffer. Samples were incubated with primary antibody (1/250 in 1% serum) for 12 hours at 4°C. A Biotin-conjugated Horse anti-mouse IgG polyclonal (1/200) was used as the secondary antibody.

Immunohistochemistry (Formalin/PFA-fixed paraffin-embedded sections) - Anti-EpCAM antibody [Ber-EP4] (ab7504)

This image is courtesy of an Abreview submitted by Eva Schmelzer

Our Abpromise to you: Quality guaranteed and expert technical support

- Replacement or refund for products not performing as stated on the datasheet
- Valid for 12 months from date of delivery
- Response to your inquiry within 24 hours
- We provide support in Chinese, English, French, German, Japanese and Spanish
- Extensive multi-media technical resources to help you
- We investigate all quality concerns to ensure our products perform to the highest standards

If the product does not perform as described on this datasheet, we will offer a refund or replacement. For full details of the Abpromise, please visit <https://www.abcam.cn/abpromise> or contact our technical team.

Terms and conditions

- Guarantee only valid for products bought direct from Abcam or one of our authorized distributors