


### Anti-ENT1 antibody ab150493

#### 1 图像

#### 概述

产品名称	Anti-ENT1抗体
描述	兔多克隆抗体to ENT1
宿主	Rabbit
特异性	BLAST analysis of the peptide immunogen showed no homology with other Human proteins.
经测试应用	适用于: IHC-P
种属反应性	与反应: Human 预测可用于: Rabbit, Goat, Horse, Guinea pig, Cow, Dog, Pig, Chimpanzee, Monkey, Gorilla, Common marmoset, Orangutan, Bat, Elephant 
免疫原	Synthetic 16 amino acid peptide from the internal region of Human ENT1.
阳性对照	Human placenta tissue
常规说明	<p>The Life Science industry has been in the grips of a reproducibility crisis for a number of years. Abcam is leading the way in addressing this with our range of recombinant monoclonal antibodies and knockout edited cell lines for gold-standard validation. Please check that this product meets your needs before purchasing.</p> <p>If you have any questions, special requirements or concerns, please send us an inquiry and/or contact our Support team ahead of purchase. Recommended alternatives for this product can be found below, along with publications, customer reviews and Q&amp;As</p>

#### 性能

形式	Liquid
存放说明	Shipped at 4°C.
存储溶液	pH: 7.4 Preservative: 0.1% Sodium azide Constituent: 99% PBS
纯度	Immunogen affinity purified
克隆	多克隆
同种型	IgG

## The Abpromise guarantee

**Abpromise™**承诺保证使用ab150493于以下的经测试应用

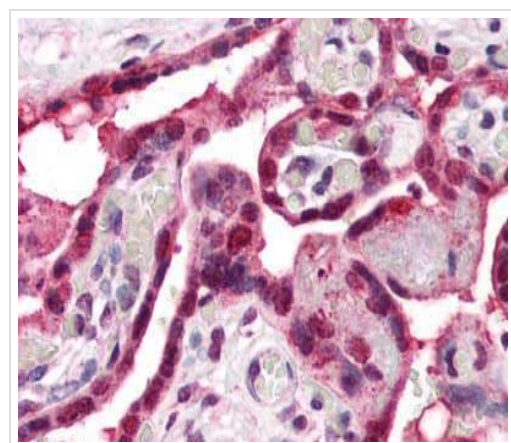
“应用说明”部分 下显示的仅为推荐的起始稀释度;实际最佳的稀释度/浓度应由使用者检定。

应用	Ab评论	说明
IHC-P		Use a concentration of 2.5 µg/ml. Perform heat mediated antigen retrieval before commencing with IHC staining protocol.

## 靶标

功能	Mediates both influx and efflux of nucleosides across the membrane (equilibrative transporter). It is sensitive (ES) to low concentrations of the inhibitor nitrobenzylmercaptapurine riboside (NBMPR) and is sodium-independent. It has a higher affinity for adenosine. Inhibited by dipyridamole and dilazep (anticancer chemotherapeutics drugs).
组织特异性	Expressed in heart, brain, mammary gland, erythrocytes and placenta, and also in fetal liver and spleen.
序列相似性	Belongs to the SLC29A transporter family.
翻译后修饰	Glycosylated.
细胞定位	Basolateral cell membrane. Apical cell membrane. Predominantly localized in the basolateral membrane in polarised MDCK cells.

## 图片



Immunohistochemical analysis of formalin-fixed, paraffin-embedded Human placenta tissue labelling ENT1 with ab150493 at 2.5 µg/ml.

Immunohistochemistry (Formalin/PFA-fixed paraffin-embedded sections) - Anti-ENT1 antibody (ab150493)

**Please note:** All products are "FOR RESEARCH USE ONLY. NOT FOR USE IN DIAGNOSTIC PROCEDURES"

**Our Abpromise to you: Quality guaranteed and expert technical support**

- Replacement or refund for products not performing as stated on the datasheet
- Valid for 12 months from date of delivery
- Response to your inquiry within 24 hours
- We provide support in Chinese, English, French, German, Japanese and Spanish
- Extensive multi-media technical resources to help you
- We investigate all quality concerns to ensure our products perform to the highest standards

If the product does not perform as described on this datasheet, we will offer a refund or replacement. For full details of the Abpromise, please visit <https://www.abcam.cn/abpromise> or contact our technical team.

#### **Terms and conditions**

---

- Guarantee only valid for products bought direct from Abcam or one of our authorized distributors