

Anti-Endothelium antibody [PAL-E] ab8086

★★★★☆ [2 Abreviews](#) [11 References](#) [1 图像](#)

概述

产品名称	Anti-Endothelium抗体[PAL-E]
描述	小鼠单克隆抗体[PAL-E] to Endothelium
宿主	Mouse
特异性	Reactivity with: Lymphatic endothelium :not detectable. Sinus histiocytes :not detectable. Megakaryocytes :not detectable.
经测试应用	适用于: IHC-Fr 不适用于: WB
种属反应性	与反应: Rabbit, Goat, Dog, Human, Pig 不与反应: Mouse, Rat, Chicken
免疫原	Tissue, cells or virus corresponding to Human Endothelium.
阳性对照	IHC-Fr: human spleen tissue
常规说明	<p>The antibody only stains human and various animal (goat, rabbit, pig, dog) blood vessels with the exception of arteries.</p> <p>The Life Science industry has been in the grips of a reproducibility crisis for a number of years. Abcam is leading the way in addressing this with our range of recombinant monoclonal antibodies and knockout edited cell lines for gold-standard validation. Please check that this product meets your needs before purchasing.</p> <p>If you have any questions, special requirements or concerns, please send us an inquiry and/or contact our Support team ahead of purchase. Recommended alternatives for this product can be found below, along with publications, customer reviews and Q&As</p>

性能

形式	Liquid
存放说明	Shipped at 4°C. Store at +4°C short term (1-2 weeks). Upon delivery aliquot. Store at -20°C long term.
存储溶液	pH: 7.3 Preservative: 0.07% Sodium azide
纯度	Tissue culture supernatant

Primary antibody说明	The antibody only stains human and various animal (goat, rabbit, pig, dog) blood vessels with the exception of arteries.
克隆	单克隆
克隆编号	PAL-E
同种型	IgG2a

应用

The Abpromise guarantee **Abpromise™** 承诺保证使用ab8086于以下的经测试应用

“应用说明”部分 下显示的仅为推荐的起始稀释度;实际最佳的稀释度/浓度应由使用者检定。

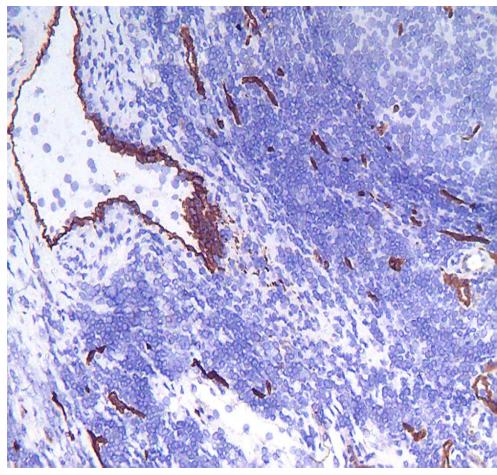
应用	Ab评论	说明
IHC-Fr	★★★★★ (1)	1/100. Fix with acetone.

应用说明 Is unsuitable for WB.

靶标

相关性 The endothelium is located at the interface between the blood and the vessel wall. The cells are in close contact and form a slick layer that prevents blood cell interaction with the vessel wall as blood moves through the vessel lumen. The endothelium consists of simple squamous epithelium that lines the lumen of all blood vessels. It plays a critical role in the mechanics of blood flow, the regulation of coagulation, leukocyte adhesion, and vascular smooth muscle cell growth, and also serves as a barrier to the transvascular diffusion of liquids and solutes. For years the endothelium was thought of as an inert single layer of cells that passively allow the passage of water and other small molecules across the vessel wall. However, this dynamic tissue performs many other active functions, such as the secretion and modification of vasoactive substances and the contraction and relaxation of vascular smooth muscle.

图片



Immunohistochemistry (Frozen sections) - Anti-Endothelium antibody [PAL-E] (ab8086)

Immunohistochemistry (Frozen sections) analysis of frozen human sleep tissue section labeling Endothelium with ab8086. The frozen section is fixated using acetone.

The magnification is 100 times.

Please note: All products are "FOR RESEARCH USE ONLY. NOT FOR USE IN DIAGNOSTIC PROCEDURES"

Our Abpromise to you: Quality guaranteed and expert technical support

- Replacement or refund for products not performing as stated on the datasheet
- Valid for 12 months from date of delivery
- Response to your inquiry within 24 hours
- We provide support in Chinese, English, French, German, Japanese and Spanish
- Extensive multi-media technical resources to help you
- We investigate all quality concerns to ensure our products perform to the highest standards

If the product does not perform as described on this datasheet, we will offer a refund or replacement. For full details of the Abpromise, please visit <https://www.abcam.cn/abpromise> or contact our technical team.

Terms and conditions

- Guarantee only valid for products bought direct from Abcam or one of our authorized distributors