

Anti-EN1 / Engrailed 1 antibody [EPR3282] ab108598

重组 RabMAb

2 References 3 图像

概述

产品名称	Anti-EN1 / Engrailed 1抗体[EPR3282]
描述	兔单克隆抗体[EPR3282] to EN1 / Engrailed 1
宿主	Rabbit
特异性	We have data to suggest no cross-reactivity with EN2/Engrailed 2, please contact us if you require further details/experimental data
经测试应用	适用于: WB 不适用于: ICC/IF or IHC-P
种属反应性	与反应: Mouse, Rat, Human
免疫原	Synthetic peptide. This information is proprietary to Abcam and/or its suppliers.
阳性对照	U87-MG, SH-SY5Y, 293T and Human fetal brain lysates
常规说明	This product is a recombinant monoclonal antibody, which offers several advantages including: <ul style="list-style-type: none"> - High batch-to-batch consistency and reproducibility - Improved sensitivity and specificity - Long-term security of supply - Animal-free production For more information see here . Our RabMAb [®] technology is a patented hybridoma-based technology for making rabbit monoclonal antibodies. For details on our patents, please refer to RabMAb[®] patents .

性能

形式	Liquid
存放说明	Shipped at 4°C. Store at +4°C short term (1-2 weeks). Upon delivery aliquot. Store at -20°C. Avoid freeze / thaw cycle.
存储溶液	pH: 7.20 Preservative: 0.01% Sodium azide Constituents: 0.05% BSA, 50% Glycerol (glycerin, glycerine), 49% PBS
纯度	Protein A purified
克隆	单克隆

克隆编号EPR3282

同种型IgG

应用

The Abpromise guarantee **Abpromise™**承诺保证使用ab108598于以下的经测试应用

“应用说明”部分 下显示的仅为推荐的起始稀释度;实际最佳的稀释度/浓度应由使用者检定。

应用	Ab评论	说明
WB		1/1000 - 1/10000. Detects a band of approximately 55 kDa (predicted molecular weight: 40 kDa).

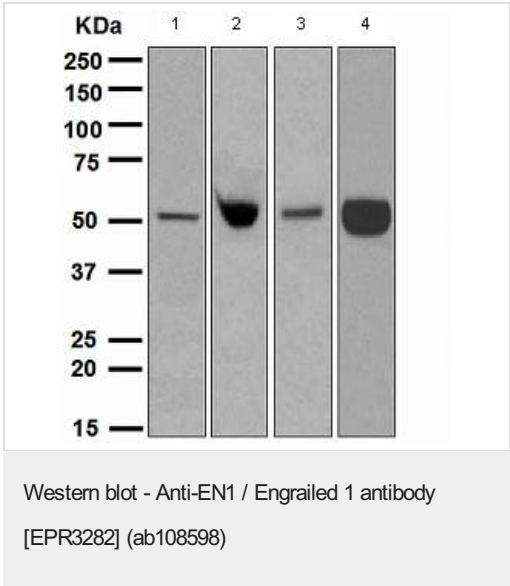
应用说明 Is unsuitable for ICC/IF or IHC-P.

靶标

序列相似性 Belongs to the engrailed homeobox family.
Contains 1 homeobox DNA-binding domain.

细胞定位 Nucleus.

图片

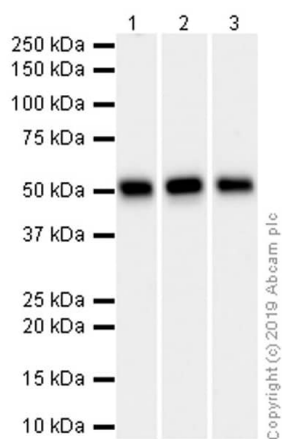


All lanes : Anti-EN1 / Engrailed 1 antibody [EPR3282] (ab108598)
at 1/1000 dilution

Lane 1 : U87-MG lysate
Lane 2 : SH-SY5Y lysate
Lane 3 : 293T lysate
Lane 4 : Human fetal brain lysate

Lysates/proteins at 10 µg per lane.

Predicted band size: 40 kDa



Western blot - Anti-EN1 / Engrailed 1 antibody
[EPR3282] (ab108598)

All lanes : Anti-EN1 / Engrailed 1 antibody [EPR3282] (ab108598)
at 1/10000 dilution

Lane 1 : Human brain lysate

Lane 2 : Mouse brain lysate

Lane 3 : Rat brain lysate

Lysates/proteins at 15 µg per lane.

Secondary

All lanes : Goat Anti-Rabbit IgG (HRP) with minimal cross-reactivity
with human IgG at 1/2000 dilution

Predicted band size: 40 kDa

Observed band size: 50 kDa

Exposure time: 8 seconds

Blocking and dilution buffer and concentration: 5%
NFDM/TBST

Why choose a recombinant antibody?



**Research with
confidence**
Consistent and
reproducible results



**Long-term and
scalable supply**
Recombinant
technology



**Success from the
first experiment**
Confirmed
specificity



**Ethical standards
compliant**
Animal-free
production

Anti-EN1 / Engrailed 1 antibody [EPR3282]
(ab108598)

Please note: All products are "FOR RESEARCH USE ONLY. NOT FOR USE IN DIAGNOSTIC PROCEDURES"

Our Abpromise to you: Quality guaranteed and expert technical support

- Replacement or refund for products not performing as stated on the datasheet
- Valid for 12 months from date of delivery
- Response to your inquiry within 24 hours

- We provide support in Chinese, English, French, German, Japanese and Spanish
- Extensive multi-media technical resources to help you
- We investigate all quality concerns to ensure our products perform to the highest standards

If the product does not perform as described on this datasheet, we will offer a refund or replacement. For full details of the Abpromise, please visit <https://www.abcam.cn/abpromise> or contact our technical team.

Terms and conditions

- Guarantee only valid for products bought direct from Abcam or one of our authorized distributors