

Anti-ELOVL5 antibody [EPR17151] ab205535

重组 RabMAb

3 References **10 图像**

概述

产品名称	Anti-ELOVL5抗体[EPR17151]
描述	兔单克隆抗体[EPR17151] to ELOVL5
宿主	Rabbit
特异性	<p>When testing sample with low protein level, we recommend uploading more amount of lysate, using lower antibody dilution, and using higher sensitivity ECL substrate.</p> <p>We also recommend trying 1%SDS Hot lysis prepare method to get desired Western Blot results.</p>
经测试应用	适用于: Flow Cyt (Intra), WB, ICC/IF
种属反应性	与反应: Mouse, Rat, Human
免疫原	Synthetic peptide. This information is proprietary to Abcam and/or its suppliers.
阳性对照	WB: MCF7 (RIPA lysis and 1%SDS Hot lysis) , HeLa (RIPA lysis and 1%SDS Hot lysis), HepG2 (RIPA lysis method), C6 and RAW 264.7 whole cell lysates; Human fetal brain, fetal heart and fetal kidney lysates; Human testis lysate; Mouse brain, heart, kidney and spleen lysates; Rat brain, heart, kidney and spleen lysates. ICC/IF: HeLa and HepG2 cells.
常规说明	<p>This product is a recombinant monoclonal antibody, which offers several advantages including:</p> <ul style="list-style-type: none"> - High batch-to-batch consistency and reproducibility - Improved sensitivity and specificity - Long-term security of supply - Animal-free production <p>For more information see here.</p> <p>Our RabMAb[®] technology is a patented hybridoma-based technology for making rabbit monoclonal antibodies. For details on our patents, please refer to RabMAb[®] patents.</p>

性能

形式	Liquid
存放说明	Shipped at 4°C. Store at +4°C short term (1-2 weeks). Upon delivery aliquot. Store at -20°C long term. Avoid freeze / thaw cycle.
存储溶液	<p>pH: 7.2</p> <p>Preservative: 0.01% Sodium azide</p> <p>Constituents: 59% PBS, 40% Glycerol (glycerin, glycerine), 0.05% BSA</p>

纯度	Protein A purified
克隆	单克隆
克隆编号	EPR17151
同种型	IgG

应用

The Abpromise guarantee Abpromise™承诺保证使用ab205535于以下的经测试应用

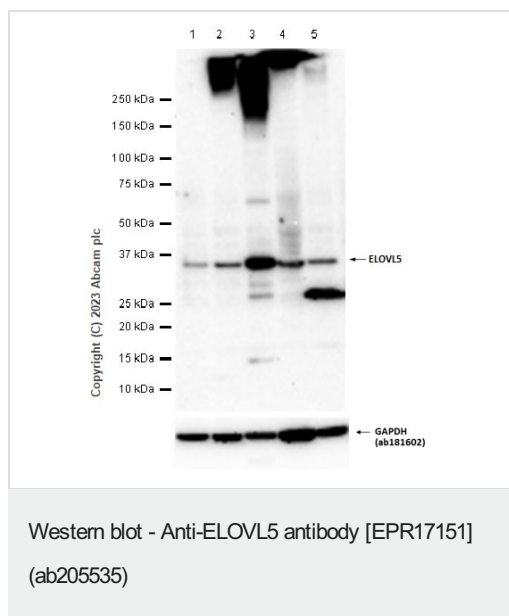
“应用说明”部分 下显示的仅为推荐的起始稀释度;实际最佳的稀释度/浓度应由使用者检定。

应用	Ab评论	说明
Flow Cyt (Intra)		1/20.
WB		1/1000. Detects a band of approximately 35 kDa (predicted molecular weight: 35 kDa).
ICC/IF		1/100.

靶标

功能	Condensing enzyme that catalyzes the synthesis of monounsaturated and of polyunsaturated very long chain fatty acids Acts specifically toward polyunsaturated acyl-CoA with the higher activity toward C18:3(n-6) acyl-CoA.
组织特异性	Ubiquitous. Highly expressed in the adrenal gland and testis. Weekly expressed in prostate, lung and brain.
序列相似性	Belongs to the ELO family.
细胞定位	Endoplasmic reticulum membrane.

图片



All lanes : Anti-ELOVL5 antibody [EPR17151] (ab205535) at 1/1000 dilution

Lane 1 : HepG2 (Human hepatocellular carcinoma epithelial cell) whole cell lysate prepared in RIPA lysis method

Lane 2 : MCF7 (Human breast adenocarcinoma epithelial cell) whole cell lysate prepared in RIPA lysis method

Lane 3 : MCF7 (Human breast adenocarcinoma epithelial cell) whole cell lysate prepared in 1%SDS Hot lysis method

Lane 4 : HeLa (Human cervix adenocarcinoma epithelial cell) whole cell lysate prepared in RIPA lysis method

Lane 5 : HeLa (Human cervix adenocarcinoma epithelial cell) whole cell lysate prepared in 1%SDS Hot lysis method

Lysates/proteins at 20 µg per lane.

Secondary

All lanes : Goat Anti-Rabbit IgG H&L (HRP) ([ab97051](#)) at 1/20000 dilution

Predicted band size: 35 kDa

Observed band size: 35 kDa

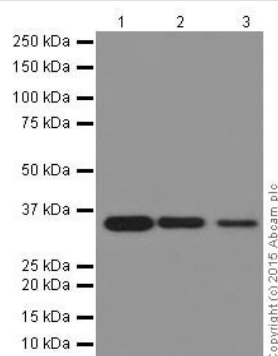
Exposure time: 180 seconds

Blocking buffer and concentration: 5% NFDM/TBST.

Diluting buffer and concentration: 5% NFDM/TBST.

When testing sample with low protein level, we recommend uploading more amount of lysate, using lower antibody dilution, and using higher sensitivity ECL substrate.

We also recommend trying 1%SDS Hot lysis prepare method to get desired Western Blot results.



Western blot - Anti-ELOVL5 antibody [EPR17151]
(ab205535)

All lanes : Anti-ELOVL5 antibody [EPR17151] (ab205535) at
1/1000 dilution

Lane 1 : Human fetal brain lysate

Lane 2 : Human fetal heart lysate

Lane 3 : Human fetal kidney lysate

Lysates/proteins at 10 µg per lane.

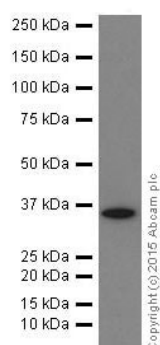
Secondary

All lanes : Anti-Rabbit IgG (HRP), specific to the non-reduced form
of IgG at 1/10000 dilution

Predicted band size: 35 kDa

Exposure time: 30 seconds

Blocking/Dilution buffer: 5% NFDM/TBST.



Western blot - Anti-ELOVL5 antibody [EPR17151]
(ab205535)

Anti-ELOVL5 antibody [EPR17151] (ab205535) at 1/1000 dilution
+ Human testis lysate at 10 µg

Secondary

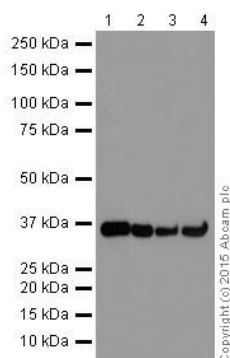
Anti-Rabbit IgG (HRP), specific to the non-reduced form of IgG at
1/10000 dilution

Predicted band size: 35 kDa

Observed band size: 35 kDa

Exposure time: 3 minutes

Blocking/Dilution buffer: 5% NFDM/TBST.



Western blot - Anti-ELOVL5 antibody [EPR17151]
(ab205535)

All lanes : Anti-ELOVL5 antibody [EPR17151] (ab205535) at
1/1000 dilution

Lane 1 : Mouse brain lysate

Lane 2 : Mouse heart lysate

Lane 3 : Mouse kidney lysate

Lane 4 : Mouse spleen lysate

Lysates/proteins at 10 µg per lane.

Secondary

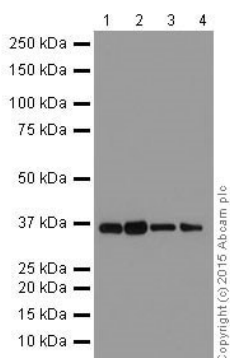
All lanes : Goat Anti-Rabbit IgG H&L (HRP) ([ab97051](#)) at 1/10000
dilution

Predicted band size: 35 kDa

Observed band size: 35 kDa

Exposure time: 3 minutes

Blocking/Dilution buffer: 5% NFDM/TBST.



Western blot - Anti-ELOVL5 antibody [EPR17151]
(ab205535)

All lanes : Anti-ELOVL5 antibody [EPR17151] (ab205535) at
1/1000 dilution

Lane 1 : Rat brain lysate

Lane 2 : Rat heart lysate

Lane 3 : Rat kidney lysate

Lane 4 : Rat spleen lysate

Lysates/proteins at 10 µg per lane.

Secondary

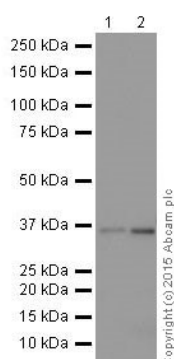
All lanes : Goat Anti-Rabbit IgG H&L (HRP) ([ab97051](#)) at 1/10000
dilution

Predicted band size: 35 kDa

Observed band size: 35 kDa

Exposure time: 15 seconds

Blocking/Dilution buffer: 5% NFDM/TBST.



Western blot - Anti-ELOVL5 antibody [EPR17151] (ab205535)

All lanes : Anti-ELOVL5 antibody [EPR17151] (ab205535) at 1/1000 dilution

Lane 1 : C6 (Rat glial tumor cells) whole cell lysate

Lane 2 : RAW 264.7 (Mouse macrophage cells transformed with Abelson murine leukemia virus) whole cell lysate

Lysates/proteins at 10 µg per lane.

Secondary

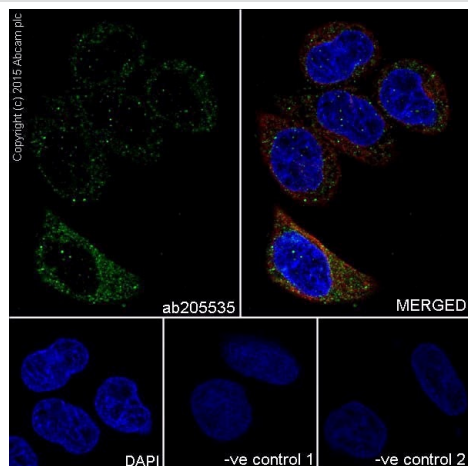
All lanes : Goat Anti-Rabbit IgG H&L (HRP) (**ab97051**) at 1/10000 dilution

Predicted band size: 35 kDa

Observed band size: 35 kDa

Exposure time: 30 seconds

Blocking/Dilution buffer: 5% NFDM/TBST.



Immunocytochemistry/ Immunofluorescence - Anti-ELOVL5 antibody [EPR17151] (ab205535)

Immunofluorescent analysis of 100% methanol-fixed, 0.1% Triton X-100 permeabilized HeLa (Human epithelial cells from cervix adenocarcinoma) cells labeling ELOVL5 with ab205535 at 1/100 dilution, followed by Goat anti-rabbit IgG (Alexa Fluor® 488) (**ab150077**) secondary antibody at 1/1000 dilution (green).

Confocal image showing cytoplasmic staining on HeLa cell line.

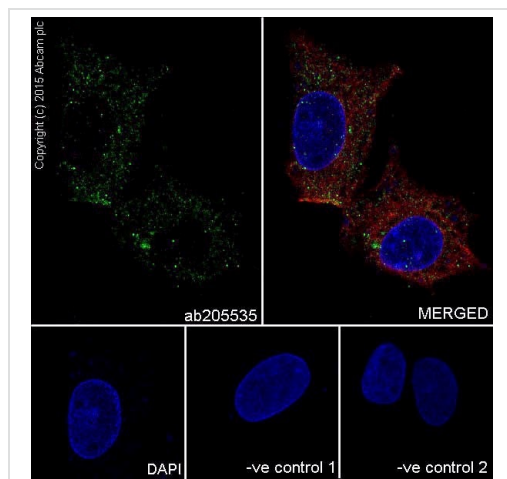
The nuclear counter stain is DAPI (blue).

Tubulin is detected with **ab7291** (anti-Tubulin mouse mAb) at 1/1000 dilution and **ab150120** (AlexaFluor®594 Goat anti-Mouse secondary) at 1/1000 dilution (red).

The negative controls are as follows:-

-ve control 1: ab205535 at 1/100 dilution followed by **ab150120** (AlexaFluor®594 Goat anti-Mouse secondary) at 1/1000 dilution.

-ve control 2: **ab7291** (anti-Tubulin mouse mAb) at 1/1000 dilution followed by **ab150077** (Alexa Fluor®488 Goat Anti-Rabbit IgG H&L) at 1/1000 dilution.



Immunocytochemistry/ Immunofluorescence - Anti-ELOVL5 antibody [EPR17151] (ab205535)

Immunofluorescent analysis of 100% methanol-fixed, 0.1% Triton X-100 permeabilized HepG2 (Human liver hepatocellular carcinoma) cells labeling ELOVL5 with ab205535 at 1/100 dilution, followed by Goat anti-rabbit IgG (Alexa Fluor® 488) (**ab150077**) secondary antibody at 1/1000 dilution (green).

Confocal image showing cytoplasmic staining on HepG2 cell line.

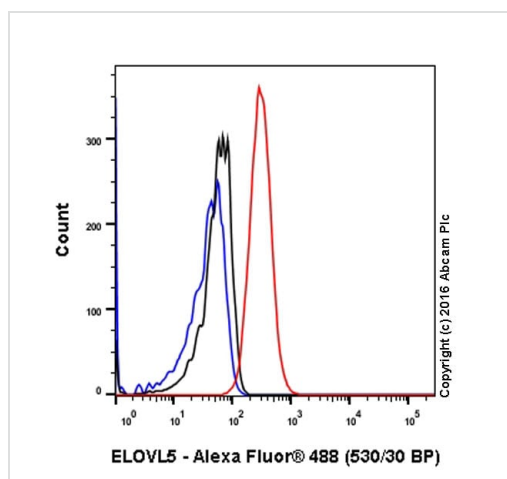
The nuclear counter stain is DAPI (blue).

Tubulin is detected with **ab7291** (anti-Tubulin mouse mAb) at 1/1000 dilution and **ab150120** (AlexaFluor®594 Goat anti-Mouse secondary) at 1/1000 dilution (red).

The negative controls are as follows:-

-ve control 1: ab205535 at 1/100 dilution followed by **ab150120** (AlexaFluor®594 Goat anti-Mouse secondary) at 1/1000 dilution.

-ve control 2: **ab7291** (anti-Tubulin mouse mAb) at 1/1000 dilution followed by **ab150077** (Alexa Fluor®488 Goat Anti-Rabbit IgG H&L) at 1/1000 dilution.



Flow Cytometry (Intracellular) - Anti-ELOVL5 antibody [EPR17151] (ab205535)

Intracellular Flow Cytometry analysis of HeLa cells labelling ELOVL5 with ab205535 at 1/20 (red). Cells were fixed with 4% paraformaldehyde and permeabilized with 90% methanol. An Alexa Fluor® 488-conjugated goat anti-rabbit IgG (1/2000) was used as the secondary antibody. Black - Isotype control, rabbit monoclonal IgG. Blue - Unlabelled control, cells without incubation with primary and secondary antibodies.

Why choose a recombinant antibody?



Research with confidence
Consistent and reproducible results



Long-term and scalable supply
Recombinant technology



Success from the first experiment
Confirmed specificity



Ethical standards compliant
Animal-free production

Anti-ELOVL5 antibody [EPR17151] (ab205535)

Please note: All products are "FOR RESEARCH USE ONLY. NOT FOR USE IN DIAGNOSTIC PROCEDURES"

Our Abpromise to you: Quality guaranteed and expert technical support

- Replacement or refund for products not performing as stated on the datasheet
- Valid for 12 months from date of delivery
- Response to your inquiry within 24 hours
- We provide support in Chinese, English, French, German, Japanese and Spanish
- Extensive multi-media technical resources to help you
- We investigate all quality concerns to ensure our products perform to the highest standards

If the product does not perform as described on this datasheet, we will offer a refund or replacement. For full details of the Abpromise, please visit <https://www.abcam.cn/abpromise> or contact our technical team.

Terms and conditions

- Guarantee only valid for products bought direct from Abcam or one of our authorized distributors