


Anti-ELMO1 antibody [EPR12919] ab174298

重组 RabMAb

1 Abreviews **2** References **6** 图像

概述

产品名称	Anti-ELMO1抗体[EPR12919]
描述	兔单克隆抗体[EPR12919] to ELMO1
宿主	Rabbit
经测试应用	适用于: ICC/IF, WB, IP, Flow Cyt (Intra) 不适用于: IHC-P
种属反应性	与反应: Human 预测可用于: Mouse, Rat 
免疫原	Synthetic peptide. This information is proprietary to Abcam and/or its suppliers.
阳性对照	WB: Jurkat whole cell lysate (ab7899); human placenta lysate. IP: Jurkat whole cell lysate (ab7899). Flow Cyt (intra): Jurkat cells. ICC/IF: K562 cells
常规说明	<p>This product is a recombinant monoclonal antibody, which offers several advantages including:</p> <ul style="list-style-type: none"> - High batch-to-batch consistency and reproducibility - Improved sensitivity and specificity - Long-term security of supply - Animal-free production <p>For more information see here.</p> <p>Our RabMAb[®] technology is a patented hybridoma-based technology for making rabbit monoclonal antibodies. For details on our patents, please refer to RabMAb[®] patents.</p>

性能

形式	Liquid
存放说明	Shipped at 4°C. Store at +4°C short term (1-2 weeks). Upon delivery aliquot. Store at -20°C long term. Avoid freeze / thaw cycle.
存储溶液	pH: 7.20 Preservative: 0.01% Sodium azide Constituents: 9% PBS, 40% Glycerol (glycerin, glycerine), 0.05% BSA, 50% Tissue culture supernatant
纯度	Protein A purified
克隆	单克隆

克隆编号	EPR12919
同种型	IgG

应用

The Abpromise guarantee Abpromise™承诺保证使用ab174298于以下的经测试应用

“应用说明”部分 下显示的仅为推荐的起始稀释度;实际最佳的稀释度/浓度应由使用者检定。

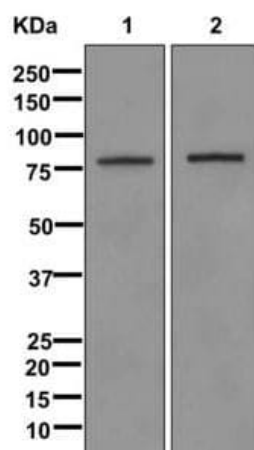
应用	Ab评论	说明
ICC/IF		1/100 - 1/250.
WB		1/10000 - 1/50000. Predicted molecular weight: 84 kDa.
IP		1/10 - 1/100.
Flow Cyt (Intra)		Use at an assay dependent concentration.

应用说明 Is unsuitable for IHC-P.

靶标

功能	Involved in cytoskeletal rearrangements required for phagocytosis of apoptotic cells and cell motility. Acts in association with DOCK1 and CRK. Was initially proposed to be required in complex with DOCK1 to activate Rac Rho small GTPases. May enhance the guanine nucleotide exchange factor (GEF) activity of DOCK1.
组织特异性	Widely expressed, with a higher expression in the spleen and placenta.
序列相似性	Contains 1 ELMO domain. Contains 1 PH domain.
翻译后修饰	Phosphorylated by HCK.
细胞定位	Cytoplasm. Cell membrane. Translocation to plasma membrane seems to be mediated by DOCK1 and CRK.

图片



Western blot - Anti-ELMO1 antibody [EPR12919] (ab174298)

All lanes : Anti-ELMO1 antibody [EPR12919] (ab174298) at 1/10000 dilution

Lane 1 : Human placenta lysate

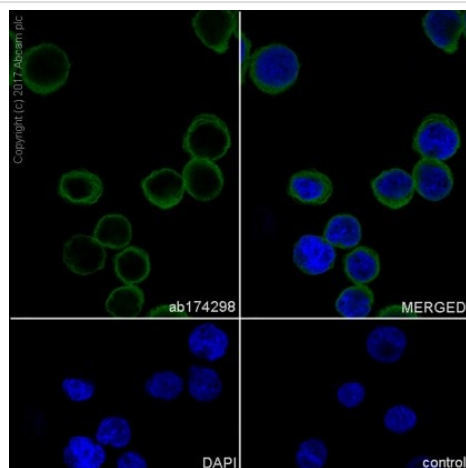
Lane 2 : Jurkat cell lysate

Lysates/proteins at 10 µg per lane.

Secondary

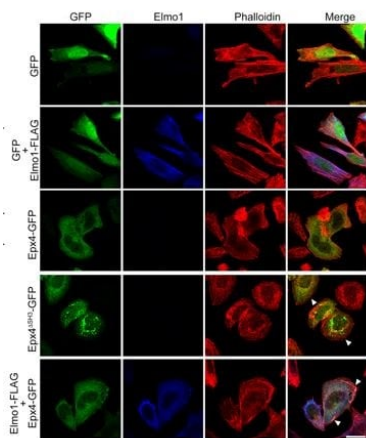
All lanes : Goat anti-rabbit HRP at 1/2000 dilution

Predicted band size: 84 kDa



Immunocytochemistry/ Immunofluorescence - Anti-ELMO1 antibody [EPR12919] (ab174298)

Immunocytochemistry/ Immunofluorescence analysis of K562 labeling ELMO1 with ab174298 at 1/250 dilution. Goat anti rabbit IgG (Alexa Fluor® 488); **ab150077** at 1/1000 was used as the secondary antibody. Cells were fixed with 4% Paraformaldehyde and permeabilised with 0.1% tritonX-100. DAPI was used to counter stain nuclei (blue).



Immunocytochemistry/ Immunofluorescence - Anti-ELMO1 antibody [EPR12919] (ab174298)

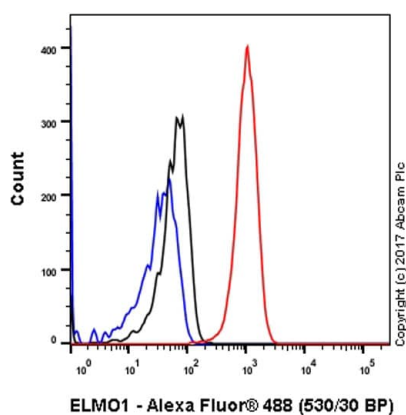
Kim, K. et al Sci Rep. 2017 Jun 30;7(1):4404. doi: 10.1038/s41598-017-04810-6 Reproduced under the Creative Commons license <http://creativecommons.org/licenses/by/4.0/>

LR73 cells were transfected with the indicated plasmids and stained with Alexa Fluor 488–conjugated phalloidin and anti-Elmo1 antibody.

One day after transfection, cells were washed with cold PBS, fixed in 4% paraformaldehyde for 15 min, and permeabilized with 0.1% Triton X-100 for 5 min. Next, permeabilized cells were blocked with 1% BSA for 30 min and stained with Alex Fluor 594–conjugated phalloidin and anti-Elmo1 antibody for 1 h at room temperature.

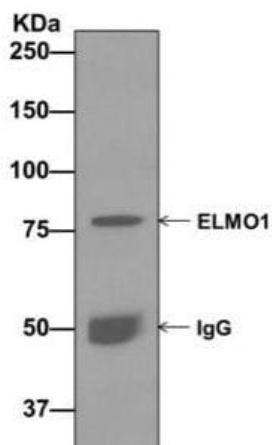
(After Figure 5 of Kim et al).

<http://creativecommons.org/licenses/by/4.0/>.



Flow Cytometry (Intracellular) - Anti-ELMO1 antibody [EPR12919] (ab174298)

Intracellular Flow Cytometry analysis of Jurkat (human acute T cell leukemia) cells labeling ELMO1 with unpurified ab174298 at 1/200 dilution (1ug/ml) (red). Cells were fixed with 4% paraformaldehyde and permeabilised with 90% methanol. A Goat anti rabbit IgG (Alexa Fluor[®] 488) (**ab150077**) (1/2000 dilution) was used as the secondary antibody. Rabbit monoclonal IgG (Black) (**ab172730**) was used as the isotype control, Cell without incubation with primary antibody and secondary antibody (Blue) were used as the unlabeled control.



Western blot analysis on immunoprecipitation pellet from Jurkat cell lysate immunoprecipitated using ab174298 at 1/10 dilution.

Immunoprecipitation - Anti-ELMO1 antibody
[EPR12919] (ab174298)

Why choose a
recombinant antibody?



Research with confidence
Consistent and reproducible results



Long-term and scalable supply
Recombinant technology



Success from the first experiment
Confirmed specificity



Ethical standards compliant
Animal-free production

Anti-ELMO1 antibody [EPR12919] (ab174298)

Please note: All products are "FOR RESEARCH USE ONLY. NOT FOR USE IN DIAGNOSTIC PROCEDURES"

Our Abpromise to you: Quality guaranteed and expert technical support

- Replacement or refund for products not performing as stated on the datasheet
- Valid for 12 months from date of delivery
- Response to your inquiry within 24 hours

- We provide support in Chinese, English, French, German, Japanese and Spanish
- Extensive multi-media technical resources to help you
- We investigate all quality concerns to ensure our products perform to the highest standards

If the product does not perform as described on this datasheet, we will offer a refund or replacement. For full details of the Abpromise, please visit <https://www.abcam.cn/abpromise> or contact our technical team.

Terms and conditions

- Guarantee only valid for products bought direct from Abcam or one of our authorized distributors