


# Anti-ELMO1 antibody - C-terminal ab155775

**2 References**   **3 图像**

### 概述

产品名称	Anti-ELMO1抗体- C-terminal
描述	兔多克隆抗体to ELMO1 - C-terminal
宿主	Rabbit
经测试应用	适用于: WB, IHC-P, ICC/IF
种属反应性	与反应: Human 预测可用于: Mouse, Rat, Chicken, Cow, Zebrafish 
免疫原	Synthetic peptide, corresponding to a region within C terminal amino acids 664-727 of Human ELMO1 (Uniprot ID Q92556).
阳性对照	H1299 whole cell lysate; HeLa cells; HepG2 and A431 cell line; Human Stomach tissue.
常规说明	<p>The Life Science industry has been in the grips of a reproducibility crisis for a number of years. Abcam is leading the way in addressing this with our range of recombinant monoclonal antibodies and knockout edited cell lines for gold-standard validation. Please check that this product meets your needs before purchasing.</p> <p>If you have any questions, special requirements or concerns, please send us an inquiry and/or contact our Support team ahead of purchase. Recommended alternatives for this product can be found below, along with publications, customer reviews and Q&amp;As</p>

### 性能

形式	Liquid
存放说明	Shipped at 4°C. Upon delivery aliquot. Store at -20°C or -80°C. Avoid freeze / thaw cycle.
存储溶液	<p>pH: 7.00</p> <p>Preservative: 0.01% Thimerosal (merthiolate)</p> <p>Constituents: 89.99% PBS, 10% Glycerol (glycerin, glycerine)</p>
纯度	Immunogen affinity purified
克隆	多克隆
同种型	IgG

### 应用

## The Abpromise guarantee

**Abpromise™** 承诺保证使用 ab155775 于以下的经测试应用

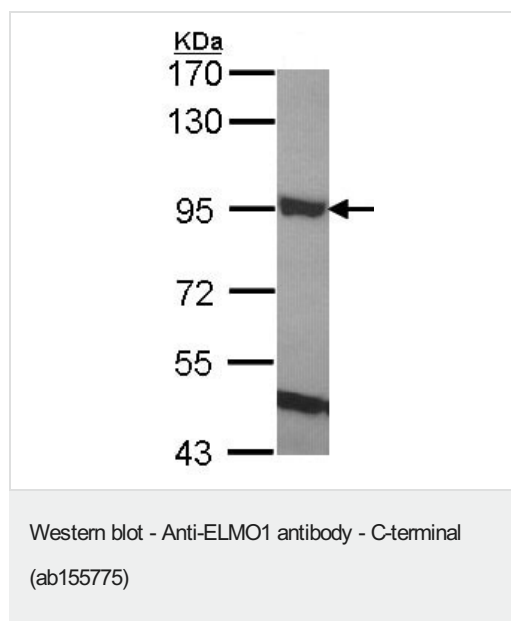
“应用说明”部分 下显示的仅为推荐的起始稀释度;实际最佳的稀释度/浓度应由使用者检定。

应用	Ab 评论	说明
WB		1/500 - 1/3000. Predicted molecular weight: 84 kDa.
IHC-P		1/100 - 1/1000. Perform heat mediated antigen retrieval with citrate buffer pH 6 before commencing with IHC staining protocol.
ICC/IF		1/100 - 1/1000.

## 靶标

功能	Involved in cytoskeletal rearrangements required for phagocytosis of apoptotic cells and cell motility. Acts in association with DOCK1 and CRK. Was initially proposed to be required in complex with DOCK1 to activate Rac Rho small GTPases. May enhance the guanine nucleotide exchange factor (GEF) activity of DOCK1.
组织特异性	Widely expressed, with a higher expression in the spleen and placenta.
序列相似性	Contains 1 ELMO domain. Contains 1 PH domain.
翻译后修饰	Phosphorylated by HCK.
细胞定位	Cytoplasm. Cell membrane. Translocation to plasma membrane seems to be mediated by DOCK1 and CRK.

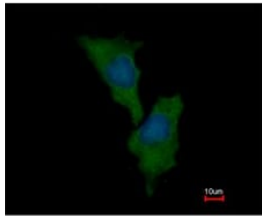
## 图片



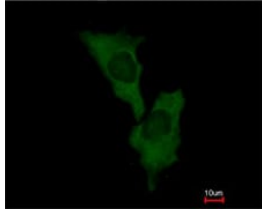
Anti-ELMO1 antibody - C-terminal (ab155775) at 1/1000 dilution + H1299 whole cell lysate at 30 µg

**Predicted band size:** 84 kDa

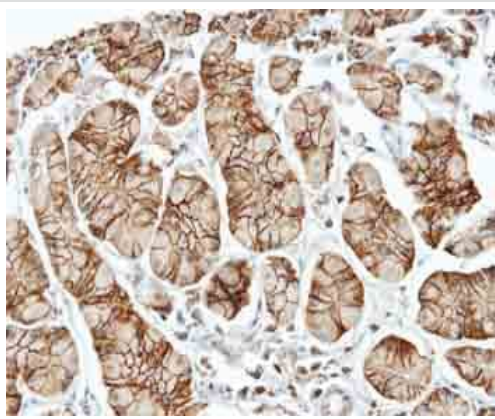
12% SDS PAGE



Immunofluorescence analysis of methanol-fixed HeLa, labeling ELMO1 with ab155775 at 1/500 dilution. Blue: Hoechst 33342 staining.



Immunocytochemistry/ Immunofluorescence - Anti-ELMO1 antibody - C-terminal (ab155775)



Immunohistochemical analysis of paraffin-embedded Human Stomach tissue, labeling ELMO1 with ab155775 at 1/100 dilution.

Immunohistochemistry (Formalin/PFA-fixed paraffin-embedded sections) - Anti-ELMO1 antibody - C-terminal (ab155775)

**Please note:** All products are "FOR RESEARCH USE ONLY. NOT FOR USE IN DIAGNOSTIC PROCEDURES"

### Our Abpromise to you: Quality guaranteed and expert technical support

- Replacement or refund for products not performing as stated on the datasheet
- Valid for 12 months from date of delivery
- Response to your inquiry within 24 hours
- We provide support in Chinese, English, French, German, Japanese and Spanish
- Extensive multi-media technical resources to help you
- We investigate all quality concerns to ensure our products perform to the highest standards

If the product does not perform as described on this datasheet, we will offer a refund or replacement. For full details of the Abpromise, please visit <https://www.abcam.cn/abpromise> or contact our technical team.

## Terms and conditions

---

- Guarantee only valid for products bought direct from Abcam or one of our authorized distributors