

Anti-Elastin antibody ab21610

★★★★★ [13 Abreviews](#) [91 References](#) [2 图像](#)

概述

产品名称	Anti-Elastin抗体
描述	兔多克隆抗体to Elastin
宿主	Rabbit
特异性	Interacts with tropoelastin and insoluble elastin (there are many shared epitopes between the two forms of the protein).
经测试应用	适用于: ICC, IHC-P 不适用于: WB
种属反应性	与反应: Mouse
免疫原	Full length protein corresponding to Elastin. ab21610 was generated to the mature, insoluble form of elastin purified from pig, human, dog, chicken, rat and cow.
常规说明	<p>The Life Science industry has been in the grips of a reproducibility crisis for a number of years. Abcam is leading the way in addressing this with our range of recombinant monoclonal antibodies and knockout edited cell lines for gold-standard validation. Please check that this product meets your needs before purchasing.</p> <p>If you have any questions, special requirements or concerns, please send us an inquiry and/or contact our Support team ahead of purchase. Recommended alternatives for this product can be found below, along with publications, customer reviews and Q&As</p>

性能

形式	Liquid
存放说明	Shipped at 4°C. Store at +4°C short term (1-2 weeks). Upon delivery aliquot. Store at -20°C or -80°C. Avoid freeze / thaw cycle.
存储溶液	Constituents: Whole serum, 50% Glycerol (glycerin, glycerine)
纯度	Whole antiserum
克隆	多克隆
同种型	IgG

应用

“应用说明”部分 下显示的仅为推荐的起始稀释度;实际最佳的稀释度/浓度应由使用者检定。

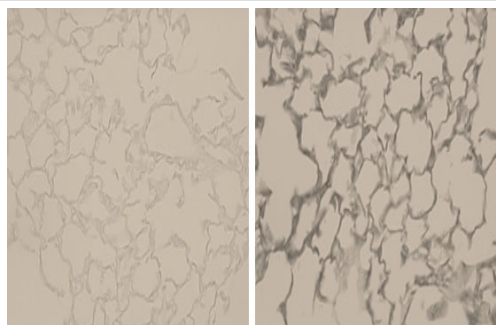
应用	Ab评论	说明
ICC		Use at an assay dependent concentration.
IHC-P	★★★★★ (8)	Use at an assay dependent concentration.

应用说明 Is unsuitable for WB.

靶标

功能	Major structural protein of tissues such as aorta and nuchal ligament, which must expand rapidly and recover completely. Molecular determinant of the late arterial morphogenesis, stabilizing arterial structure by regulating proliferation and organization of vascular smooth muscle.
组织特异性	Expressed within the outer myometrial smooth muscle and throughout the arteriolar tree of uterus (at protein level). Also expressed in the large arteries, lung and skin.
疾病相关	<p>Defects in ELN are a cause of autosomal dominant cutis laxa (ADCL) [MIM:123700]. Cutis laxa is a rare connective tissue disorder characterized by loose, hyperextensible skin with decreased resilience and elasticity leading to a premature aged appearance. The skin changes are often accompanied by extracutaneous manifestations, including pulmonary emphysema, bladder diverticula, pulmonary artery stenosis and pyloric stenosis.</p> <p>Defects in ELN are the cause of supravalvular aortic stenosis (SVAS) [MIM:185500]. SVAS is a congenital narrowing of the ascending aorta which can occur sporadically, as an autosomal dominant condition, or as one component of Williams-Beuren syndrome.</p> <p>Note=ELN is located in the Williams-Beuren syndrome (WBS) critical region. WBS results from a hemizygous deletion of several genes on chromosome 7q11.23, thought to arise as a consequence of unequal crossing over between highly homologous low-copy repeat sequences flanking the deleted region. Haploinsufficiency of ELN may be the cause of certain cardiovascular and musculo-skeletal abnormalities observed in the disease.</p>
序列相似性	Belongs to the elastin family.
翻译后修饰	<p>Elastin is formed through the cross-linking of its soluble precursor tropoelastin. Cross-linking is initiated through the action of lysyl oxidase on exposed lysines to form allysine. Subsequent spontaneous condensation reactions with other allysine or unmodified lysine residues result in various bi-, tri-, and tetrafunctional cross-links. The most abundant cross-links in mature elastin fibers are lysinonorleucine, allysine aldol, desmosine, and isodesmosine.</p> <p>Hydroxylation on proline residues within the sequence motif, GXPG, is most likely 4-hydroxy as this fits the requirement for 4-hydroxylation in vertebrates.</p>
细胞定位	Secreted > extracellular space > extracellular matrix. Extracellular matrix of elastic fibers.

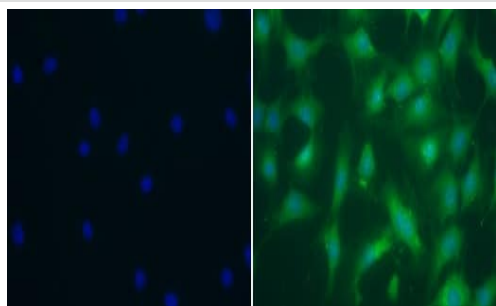
图片



Immunohistochemistry (Formalin/PFA-fixed paraffin-embedded sections) - Anti-Elastin antibody (ab21610)

Immunohistochemical analysis of Bouin's solution fixed (25cm H₂O pressure for 90 min) paraffin-embedded wild type mouse lung (12mo, female) tissue labeling Elastin with ab21610 at 1/50 dilution, followed by HRP-conjugated secondary antibody.

Left Panel: No antibody control.



Immunocytochemistry - Anti-Elastin antibody (ab21610)

Immunofluorescent analysis of 4% paraformaldehyde-fixed, 0.1% Triton X-100 permeabilized NIH-3T3 cells labeling Elastin with ab21610 at 1/200 dilution, followed by a FITC-conjugated secondary antibody. The nuclear counter stain is DAPI (blue).

Please note: All products are "FOR RESEARCH USE ONLY. NOT FOR USE IN DIAGNOSTIC PROCEDURES"

Our Abpromise to you: Quality guaranteed and expert technical support

- Replacement or refund for products not performing as stated on the datasheet
- Valid for 12 months from date of delivery
- Response to your inquiry within 24 hours
- We provide support in Chinese, English, French, German, Japanese and Spanish
- Extensive multi-media technical resources to help you
- We investigate all quality concerns to ensure our products perform to the highest standards

If the product does not perform as described on this datasheet, we will offer a refund or replacement. For full details of the Abpromise, please visit <https://www.abcam.cn/abpromise> or contact our technical team.

Terms and conditions

- Guarantee only valid for products bought direct from Abcam or one of our authorized distributors