

Anti-Egr1 antibody ab6054

★★★★★ [1 Abreviews](#) [3 References](#) [2 图像](#)

概述

产品名称

Anti-Egr1抗体

描述

兔多克隆抗体to Egr1

① 该产品是 **快线抗体**，通过亲和纯化得到。对抗原肽有高灵敏度及特异性(ELISA测试)。


[Read the terms of use »](#)

宿主

Rabbit

种属反应性

与反应: Mouse, Human

预测可用于: Rat 

免疫原

Synthetic peptide:

GEQPYEHLTAESFPDI-C

conjugated to KLH, corresponding to amino acids 93-108 of Human Egr1.

 [Run BLAST with](#)

 [Run BLAST with](#)

常规说明

The Life Science industry has been in the grips of a reproducibility crisis for a number of years. Abcam is leading the way in addressing this with our range of recombinant monoclonal antibodies and knockout edited cell lines for gold-standard validation. Please check that this product meets your needs before purchasing.

If you have any questions, special requirements or concerns, please send us an inquiry and/or contact our Support team ahead of purchase. Recommended alternatives for this product can be found below, along with publications, customer reviews and Q&As

性能

形式

Liquid

存放说明

Shipped at 4°C. Store at +4°C short term (1-2 weeks). Upon delivery aliquot. Store at -20°C or -80°C. Avoid freeze / thaw cycle.

存储溶液

Preservative: 0.01% Sodium azide

Constituents: 0.42% Potassium phosphate, 0.87% Sodium chloride

纯度

Immunogen affinity purified

克隆

多克隆

同种型

IgG

应用

Fast track antibodies constitute a diverse group of products that have been released to accelerate your research, but are not yet fully characterized. They have all been affinity purified and show high titre values against the immunizing peptide (by ELISA).

Fast track terms of use

应用	Ab评论	说明
WB	★★★★★ (1)	
IHC-P		

应用说明

Tested in peptide ELISA.

We have detected a band of 58kDa in mouse embryonic fibroblast whole cell lysate, but we have failed to detect a band at 83kDa (expected size from data from other antibodies). We would appreciate any customer feedback for this antibody.

Not tested in other applications.

Optimal dilutions/concentrations should be determined by the end user.

靶标

功能

Transcriptional regulator. Recognizes and binds to the DNA sequence 5'-CGCCCCCGC-3'(EGR-site). Activates the transcription of target genes whose products are required for mitogenesis and differentiation.

序列相似性

Belongs to the EGR C2H2-type zinc-finger protein family.
Contains 3 C2H2-type zinc fingers.

细胞定位

Nucleus.

图片

This Fast-Track antibody is not yet fully characterised. These images represent **inconclusive preliminary data**.



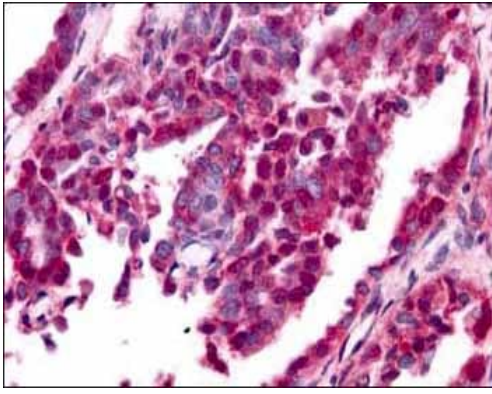
Anti-Egr1 antibody (ab6054) at 1/1500 dilution + Mouse embryonic fibroblast whole cell lysate at 35 µg

Secondary

Goat-anti-Rabbit IgG [H&L] at 1/10000 dilution

Predicted band size: 57 kDa

Observed band size: 58 kDa



ab6054 at 10 µg/ml staining human ovarian carcinoma.

Immunohistochemistry (Formalin/PFA-fixed paraffin-embedded sections) - Anti-Egr1 antibody (ab6054)

Please note: All products are "FOR RESEARCH USE ONLY. NOT FOR USE IN DIAGNOSTIC PROCEDURES"

Terms and conditions

- Guarantee only valid for products bought direct from Abcam or one of our authorized distributors