

### Anti-ECM29 antibody ab28666

[4 References](#) [4 图像](#)

#### 概述

产品名称	Anti-ECM29抗体
描述	兔多克隆抗体to ECM29
宿主	Rabbit
经测试应用	适用于: WB, ICC/IF
种属反应性	与反应: Human
免疫原	Synthetic peptide corresponding to Human ECM29 aa 1821-1839 (C terminal). Sequence: RPELQEKAALLKKTLENLE

 [Run BLAST with](#)

 [Run BLAST with](#)

阳性对照	WB: HeLa cell lysate. ICC/IF: HeLa cells, K-562 and NTERA-2 cl.D1 lysates
常规说明	<p>The Life Science industry has been in the grips of a reproducibility crisis for a number of years. Abcam is leading the way in addressing this with our range of recombinant monoclonal antibodies and knockout edited cell lines for gold-standard validation. Please check that this product meets your needs before purchasing.</p> <p>If you have any questions, special requirements or concerns, please send us an inquiry and/or contact our Support team ahead of purchase. Recommended alternatives for this product can be found below, along with publications, customer reviews and Q&amp;As</p>

#### 性能

形式	Liquid
存放说明	Shipped at 4°C. Upon delivery aliquot and store at -20°C. Avoid freeze / thaw cycles.
存储溶液	Preservative: 0.05% Sodium azide Constituent: Whole serum
纯度	Whole antiserum
克隆	多克隆
同种型	IgG

#### 应用

## The Abpromise guarantee

**Abpromise™**承诺保证使用ab28666于以下的经测试应用

“应用说明”部分 下显示的仅为推荐的起始稀释度;实际最佳的稀释度/浓度应由使用者检定。

应用	Ab评论	说明
WB		1/200. Detects a band of approximately 205 kDa (predicted molecular weight: 205 kDa).
ICC/IF		Use at an assay dependent concentration.

## 靶标

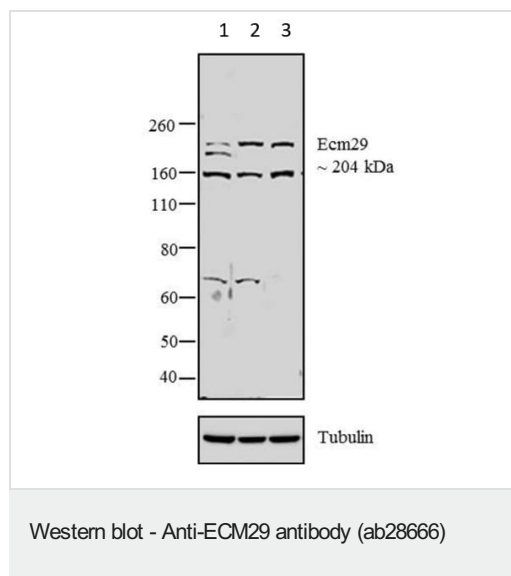
### 相关性

ECM29 appears to be one of three proteins which associate significantly with proteasomes. ECM29 has been shown to enhance the stability of the proteasome. ECM29 deletion has been shown to produce 26S proteasomes which dissociated in the absence of ATP. It was thus suggested that ECM29 tethers the regulatory complex to the proteasome.

### 细胞定位

Endoplasmic reticulum. Endoplasmic reticulum-Golgi intermediate compartment. Endosome. Cytoplasm › cytoskeleton › centrosome. Nucleus.

## 图片



**All lanes :** Anti-ECM29 antibody (ab28666) at 1/250 dilution

**Lane 1 :** HeLa whole cell lysate

**Lane 2 :** K-562 whole cell lysate

**Lane 3 :** NTERA-2 cl.D1 whole cell lysate

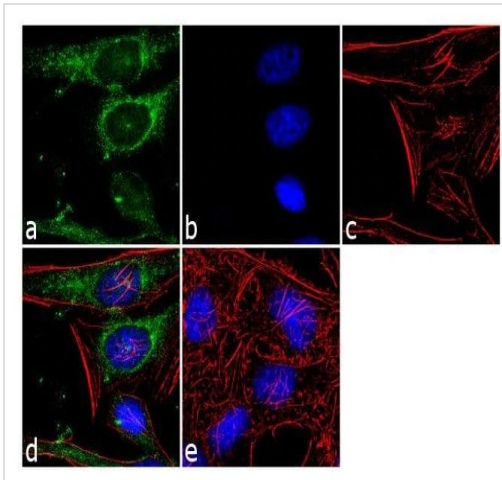
### Secondary

**All lanes :** Goat anti-Rabbit IgG (H+L) Superclonal™ Secondary Antibody at 1/2500 dilution

**Predicted band size:** 205 kDa

**Observed band size:** 204 kDa

Additional bands of 70 and 160 kDa observed might correspond to interacting partners of dynamin intermediate chain and kinesin intermediate chain respectively.



Immunocytochemistry/ Immunofluorescence - Anti-ECM29 antibody (ab28666)

Immunofluorescence analysis of HeLa cells labelling ECM29 with ab28666 at 1/250 dilution. Cells were fixed with 4% paraformaldehyde for 10 minutes, and blocked with 1% BSA for 1 hour at room temperature. Goat anti-Rabbit IgG (H+L) Superclonal™ Secondary Antibody, Alexa Fluor® 488 conjugate at 1:2000 dilution for 45 minutes at room temperature was used as the secondary antibody (green) (a). F-actin (was stained with Rhodamine Phalloidin (red) (c) and Nuclear DNA was labelled with DAPI (blue) (b). (d) represents the merged image showing cytoplasmic localization. (e) shows the no primary antibody control. The images were captured at 60X magnification.

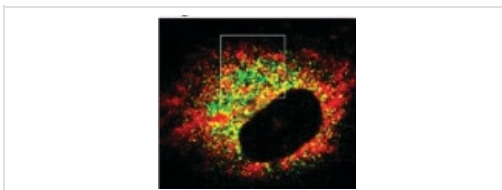


Western blot - Anti-ECM29 antibody (ab28666)

Anti-ECM29 antibody (ab28666) (dilution of 1/200) + HeLa cell extract

**Predicted band size:** 205 kDa

**Observed band size:** 205 kDa



Immunocytochemistry/ Immunofluorescence - Anti-ECM29 antibody (ab28666)

Detection of ECM29 in HeLa cells.

Immunofluorescent staining of Ecm29 in HeLa cells using ab28666 (1/200 dilution).

**Please note:** All products are "FOR RESEARCH USE ONLY. NOT FOR USE IN DIAGNOSTIC PROCEDURES"

### Our Abpromise to you: Quality guaranteed and expert technical support

- Replacement or refund for products not performing as stated on the datasheet
- Valid for 12 months from date of delivery

- Response to your inquiry within 24 hours
- We provide support in Chinese, English, French, German, Japanese and Spanish
- Extensive multi-media technical resources to help you
- We investigate all quality concerns to ensure our products perform to the highest standards

If the product does not perform as described on this datasheet, we will offer a refund or replacement. For full details of the Abpromise, please visit <https://www.abcam.cn/abpromise> or contact our technical team.

### **Terms and conditions**

---

- Guarantee only valid for products bought direct from Abcam or one of our authorized distributors