

Anti-ECHS1 antibody ab228631

9 图像

概述

产品名称	Anti-ECHS1抗体
描述	兔多克隆抗体to ECHS1
宿主	Rabbit
经测试应用	适用于: WB, IP, IHC-P, ICC/IF
种属反应性	与反应: Mouse, Human
免疫原	Recombinant fragment within Human ECHS1 (internal sequence). The exact sequence is proprietary. Database link: P30084
阳性对照	WB: Mouse brain tissue whole cell lysate; HEK-293T, A431, HeLa and HepG2 whole cell extracts. IP: HEK-293T whole cell extract. IHC-P: Mouse heart, ovary and liver tissue. ICC/IF: A431 and HeLa cells.
常规说明	<p>The Life Science industry has been in the grips of a reproducibility crisis for a number of years. Abcam is leading the way in addressing this with our range of recombinant monoclonal antibodies and knockout edited cell lines for gold-standard validation. Please check that this product meets your needs before purchasing.</p> <p>If you have any questions, special requirements or concerns, please send us an inquiry and/or contact our Support team ahead of purchase. Recommended alternatives for this product can be found below, along with publications, customer reviews and Q&As</p>

性能

形式	Liquid
存放说明	Shipped at 4°C. Store at +4°C short term (1-2 weeks). Upon delivery aliquot. Store at -20°C long term. Avoid freeze / thaw cycle.
存储溶液	pH: 7.00 Preservative: 0.01% Thimerosal (merthiolate) Constituents: 1.21% Tris, 0.75% Glycine, 20% Glycerol (glycerin, glycerine)
纯度	Immunogen affinity purified
克隆	多克隆
同种型	IgG

应用

The Abpromise guarantee **Abpromise™**承诺保证使用ab228631于以下的经测试应用

“应用说明”部分 下显示的仅为推荐的起始稀释度;实际最佳的稀释度/浓度应由使用者检定。

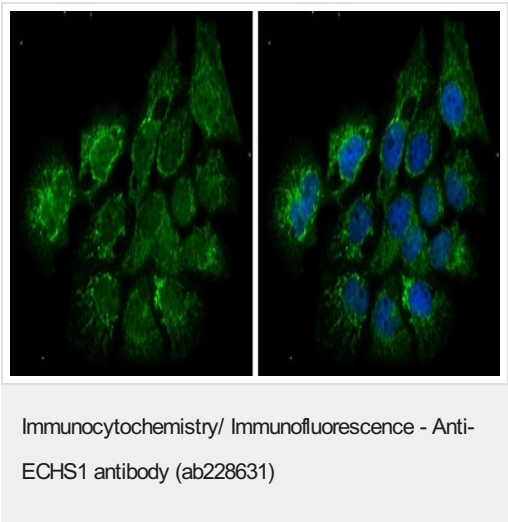
应用	Ab评论	说明
WB		1/500 - 1/10000. Predicted molecular weight: 31 kDa.
IP		1/100 - 1/500.
IHC-P		1/100 - 1/1000.
ICC/IF		1/100 - 1/1000.

靶标

相关性 ECHS1 (Enoyl Coenzyme A hydratase, short chain, 1) catalyzes the hydration of 2-trans-enoyl-coenzyme A (CoA) intermediates to L-3-hydroxyacyl-CoAs, in the second step of the mitochondrial fatty acid beta-oxidation pathway.

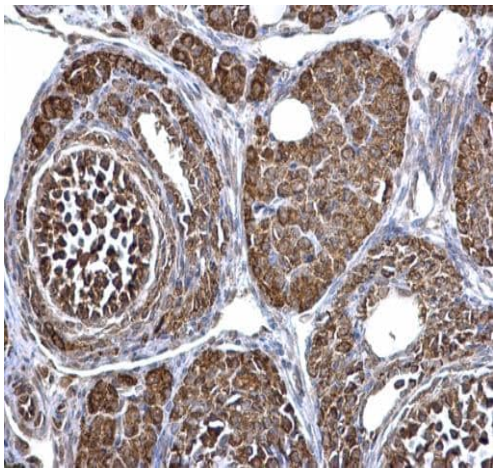
细胞定位 Mitochondrion matrix.

图片



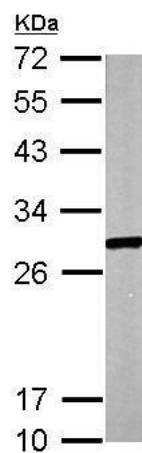
A431 (human epidermoid carcinoma cell line) cells stained for ECHS1 (green) using ab228631 at 1/200 dilution in ICC/IF. Cells were fixed in 2% paraformaldehyde/culture medium at RT for 30 minutes.

Blue: Hoechst 33342 staining.



Immunohistochemistry (Formalin/PFA-fixed paraffin-embedded sections) - Anti-ECHS1 antibody (ab228631)

Paraffin-embedded mouse liver tissue stained for ECHS1 with ab228631 at 1/500 dilution in immunohistochemical analysis.



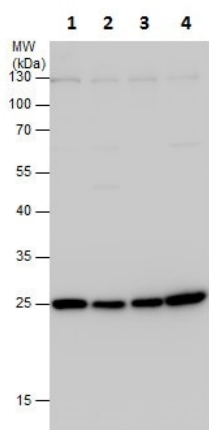
Western blot - Anti-ECHS1 antibody (ab228631)

Anti-ECHS1 antibody (ab228631) at 1/1000 dilution + Mouse brain tissue whole cell lysate at 50 µg

Developed using the ECL technique.

Predicted band size: 31 kDa

12% SDS-PAGE



Western blot - Anti-ECHS1 antibody (ab228631)

All lanes : Anti-ECHS1 antibody (ab228631) at 1/5000 dilution

Lane 1 : HEK-293T (human epithelial cell line from embryonic kidney transformed with large T antigen) whole cell extract

Lane 2 : A431 (human epidermoid carcinoma cell line) whole cell extract

Lane 3 : HeLa (human epithelial cell line from cervix adenocarcinoma) whole cell extract

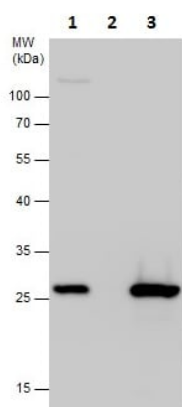
Lane 4 : HepG2 (human liver hepatocellular carcinoma cell line) whole cell extract

Lysates/proteins at 30 µg per lane.

Developed using the ECL technique.

Predicted band size: 31 kDa

12% SDS-PAGE



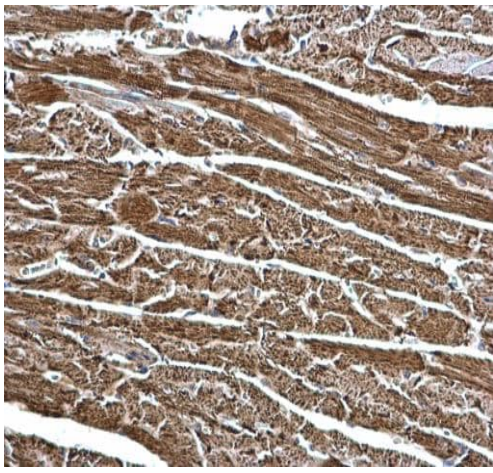
Immunoprecipitation - Anti-ECHS1 antibody (ab228631)

ECHS1 was immunoprecipitated from HEK-293T (human epithelial cell line from embryonic kidney transformed with large T antigen) whole cell extract with 5 µg ab228631. Western blot was performed from the immunoprecipitate using ab228631.

Lane 1: HEK-293T whole cell extract (Input).

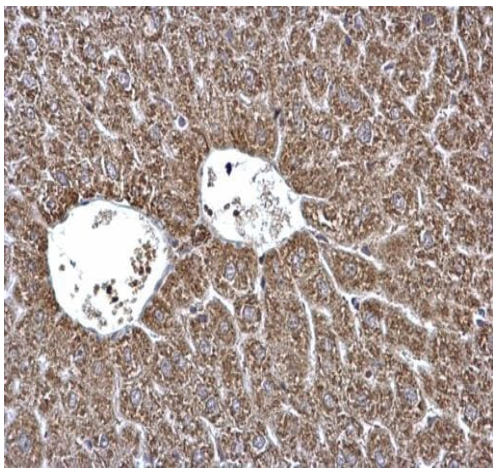
Lane 2: Control IgG instead of ab228631 in HEK-293T whole cell extract.

Lane 3: ab228631 IP in HEK-293T whole cell extract.



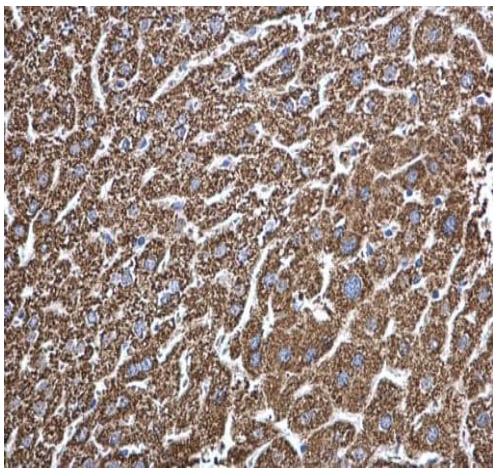
Immunohistochemistry (Formalin/PFA-fixed paraffin-embedded sections) - Anti-ECHS1 antibody (ab228631)

Paraffin-embedded mouse heart tissue stained for ECHS1 with ab228631 at 1/500 dilution in immunohistochemical analysis.



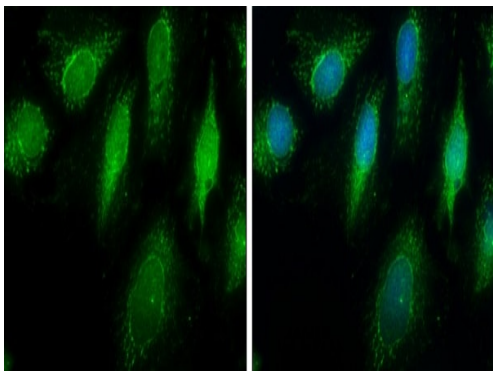
Immunohistochemistry (Formalin/PFA-fixed paraffin-embedded sections) - Anti-ECHS1 antibody (ab228631)

Paraffin-embedded mouse ovary tissue stained for ECHS1 with ab228631 at 1/500 dilution in immunohistochemical analysis.



Immunohistochemistry (Formalin/PFA-fixed paraffin-embedded sections) - Anti-ECHS1 antibody (ab228631)

Paraffin-embedded mouse liver tissue stained for ECHS1 with ab228631 at 1/500 dilution in immunohistochemical analysis.



Immunocytochemistry/ Immunofluorescence - Anti-ECHS1 antibody (ab228631)

HeLa (human epithelial cell line from cervix adenocarcinoma) cells stained for ECHS1 (green) using ab228631 at 1/500 dilution in ICC/IF. Cells were fixed in ice-cold methanol for 5 minutes.

Blue: Hoechst 33342 staining.

Please note: All products are "FOR RESEARCH USE ONLY. NOT FOR USE IN DIAGNOSTIC PROCEDURES"

Our Abpromise to you: Quality guaranteed and expert technical support

- Replacement or refund for products not performing as stated on the datasheet
- Valid for 12 months from date of delivery
- Response to your inquiry within 24 hours
- We provide support in Chinese, English, French, German, Japanese and Spanish
- Extensive multi-media technical resources to help you
- We investigate all quality concerns to ensure our products perform to the highest standards

If the product does not perform as described on this datasheet, we will offer a refund or replacement. For full details of the Abpromise, please visit <https://www.abcam.cn/abpromise> or contact our technical team.

Terms and conditions

- Guarantee only valid for products bought direct from Abcam or one of our authorized distributors