

Anti-EB3 (phospho S162) antibody [KT113] ab179877

1 图像

概述	
产品名称	Anti-EB3 (phospho S162)抗体[KT113]
描述	小鼠单克隆抗体[KT113] to EB3 (phospho S162)
宿主	Mouse
特异性	ab179877 does not cross-react with EB3 if not phosphorylated at S162.
经测试应用	适用于: WB
种属反应性	与反应: Human
免疫原	Synthetic peptide corresponding to Human EB3 (phospho S162). Conjugated to carrier protein. Database link: <a href="#">Q9UPY8</a>
常规说明	<p>The Life Science industry has been in the grips of a reproducibility crisis for a number of years. Abcam is leading the way in addressing this with our range of recombinant monoclonal antibodies and knockout edited cell lines for gold-standard validation. Please check that this product meets your needs before purchasing.</p> <p>If you have any questions, special requirements or concerns, please send us an inquiry and/or contact our Support team ahead of purchase. Recommended alternatives for this product can be found below, along with publications, customer reviews and Q&amp;As</p>

性能	
形式	Liquid
存放说明	Shipped at 4°C. Store at +4°C short term (1-2 weeks). Upon delivery aliquot. Store at -20°C long term. Avoid freeze / thaw cycle.
存储溶液	Preservative: 0.1% Sodium azide Constituent: 99% PBS
纯度	Protein A purified
纯化说明	Purified from culture supernatant.
克隆	单克隆
克隆编号	KT113
同种型	IgG1

## The Abpromise guarantee

**Abpromise™**承诺保证使用ab179877于以下的经测试应用

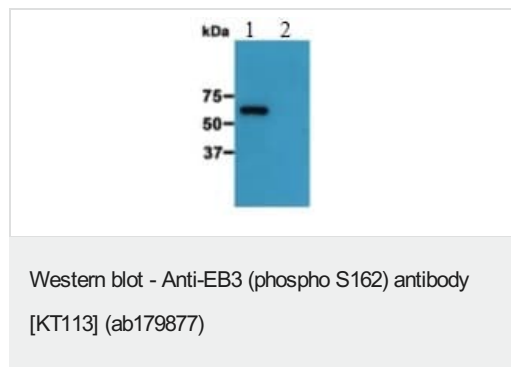
“应用说明”部分 下显示的仅为推荐的起始稀释度;实际最佳的稀释度/浓度应由使用者检定。

应用	Ab评论	说明
WB		1/1000 - 1/20000. Predicted molecular weight: 31 kDa.

## 靶标

功能	May be involved in microtubule polymerization, and spindle function by stabilizing microtubules and anchoring them at centrosomes. May play a role in cell migration.
组织特异性	Predominantly expressed in brain and muscle.
序列相似性	Belongs to the MAPRE family. Contains 1 CH (calponin-homology) domain. Contains 1 EB1 C-terminal domain.
结构域	Composed of two functionally independent domains. The N-terminal domain forms an hydrophobic cleft involved in microtubule binding and the C-terminal is involved in the formation of mutually exclusive complexes with APC and DCTN1.
细胞定位	Cytoplasm > cytoskeleton. Associated with the microtubule network.

## 图片



**All lanes :** Anti-EB3 (phospho S162) antibody [KT113] (ab179877) at 1/5000 dilution

**Lane 1 :** HEK cells expressing wild type EB3 (S162 phosphorylated) fused with GFP

**Lane 2 :** HEK cells expressing non-phosphorylated EB3 fused with GFP

**Predicted band size:** 31 kDa

**Please note:** All products are "FOR RESEARCH USE ONLY. NOT FOR USE IN DIAGNOSTIC PROCEDURES"

## Our Abpromise to you: Quality guaranteed and expert technical support

- Replacement or refund for products not performing as stated on the datasheet
- Valid for 12 months from date of delivery
- Response to your inquiry within 24 hours
- We provide support in Chinese, English, French, German, Japanese and Spanish

- Extensive multi-media technical resources to help you
- We investigate all quality concerns to ensure our products perform to the highest standards

If the product does not perform as described on this datasheet, we will offer a refund or replacement. For full details of the Abpromise, please visit <https://www.abcam.cn/abpromise> or contact our technical team.

#### **Terms and conditions**

---

- Guarantee only valid for products bought direct from Abcam or one of our authorized distributors