


### Anti-EAAT1 antibody [EPR12686] ab181036

 **RabMAb**

★★★★★ **3 Abreviews** **7 References** **13 图像**

#### 概述

产品名称	Anti-EAAT1抗体[EPR12686]
描述	兔单克隆抗体[EPR12686] to EAAT1
宿主	Rabbit
特异性	Unsuitable for human ICC/IF.
经测试应用	<b>适用于:</b> IHC-P, WB, ICC/IF
种属反应性	<b>与反应:</b> Mouse, Rat, Human <b>预测可用于:</b> Monkey 
免疫原	Synthetic peptide. This information is proprietary to Abcam and/or its suppliers.
阳性对照	WB: Mouse brain, rat brain and human cerebellum lysates. IHC-P: Human , Mouse and Rat cerebral cortex tissue sections. ICC/IF: Mouse and rat primary neural / glia cells.
常规说明	This product is a recombinant monoclonal antibody, which offers several advantages including: <ul style="list-style-type: none"> <li>- High batch-to-batch consistency and reproducibility</li> <li>- Improved sensitivity and specificity</li> <li>- Long-term security of supply</li> <li>- Animal-free production</li> </ul> For more information <a href="#">see here</a> . Our RabMAb <sup>®</sup> technology is a patented hybridoma-based technology for making rabbit monoclonal antibodies. For details on our patents, please refer to <a href="#">RabMAb<sup>®</sup> patents</a> .

#### 性能

形式	Liquid
存放说明	Shipped at 4°C. Store at +4°C short term (1-2 weeks). Upon delivery aliquot. Store at -20°C long term. Avoid freeze / thaw cycle.
存储溶液	Preservative: 0.01% Sodium azide Constituents: 40% Glycerol, 59% PBS, 0.05% BSA
纯度	Protein A purified
克隆	单克隆
克隆编号	EPR12686

同种型lgG

应用

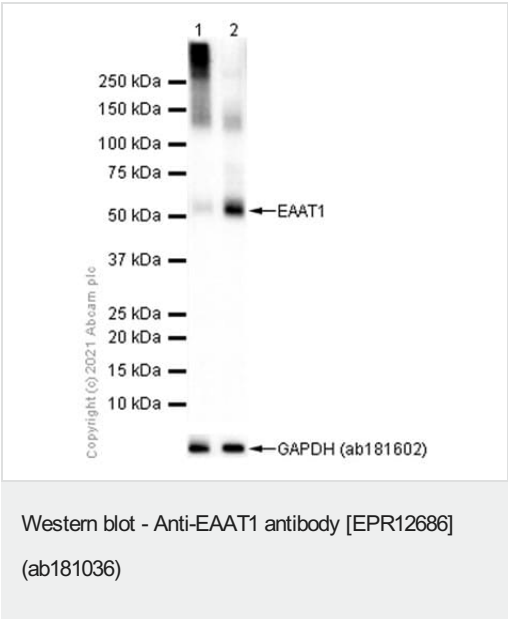
The Abpromise guarantee **Abpromise™**承诺保证使用ab181036于以下的经测试应用  
“应用说明”部分 下显示的仅为推荐的起始稀释度;实际最佳的稀释度/浓度应由使用者检定。

应用	Ab评论	说明
IHC-P		1/50 - 1/1000. Perform heat mediated antigen retrieval with citrate buffer pH 6 before commencing with IHC staining protocol.
WB		1/1000 - 1/10000. Predicted molecular weight: 59 kDa.
ICC/IF		1/50.

靶标

功能	Transports L-glutamate and also L- and D-aspartate. Essential for terminating the postsynaptic action of glutamate by rapidly removing released glutamate from the synaptic cleft. Acts as a symport by cotransporting sodium.
组织特异性	Highly expressed in cerebellum, but also found in frontal cortex, hippocampus and basal ganglia.
疾病相关	Defects in SLC1A3 are the cause of episodic ataxia type 6 (EA6) [MIM:612656]. EA6 is characterized by episodic ataxia, seizures, migraine and alternating hemiplegia.
序列相似性	Belongs to the sodium:dicarboxylate (SDF) symporter (TC 2.A.23) family. SLC1A3 subfamily.
翻译后修饰	Glycosylated.
细胞定位	Membrane.

图片



**All lanes :** Anti-EAAT1 antibody [EPR12686] (ab181036) at 1/5000 dilution

**Lane 1 :** Mouse brain lysate boiled  
**Lane 2 :** Mouse brain lysate unboiled

Lysates/proteins at 15 µg per lane.

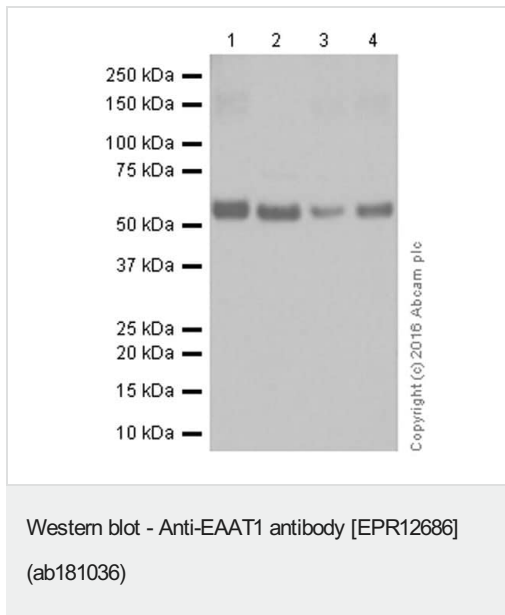
**Secondary**  
**All lanes :** Goat Anti-Rabbit IgG H&L (HRP) (**ab97051**) at 1/20000 dilution

**Predicted band size:** 59 kDa

**Exposure time:** 10 seconds

Blocking and diluting buffer and concentration: 5% NFDM/TBST.

We recommend not to boil the samples after lysis to get desired WB results.



**All lanes :** Anti-EAAT1 antibody [EPR12686] (ab181036) at 1/5000 dilution

**Lane 1 :** Mouse brain

**Lane 2 :** Mouse hippocampus

**Lane 3 :** Rat hippocampus

**Lane 4 :** Rat brain

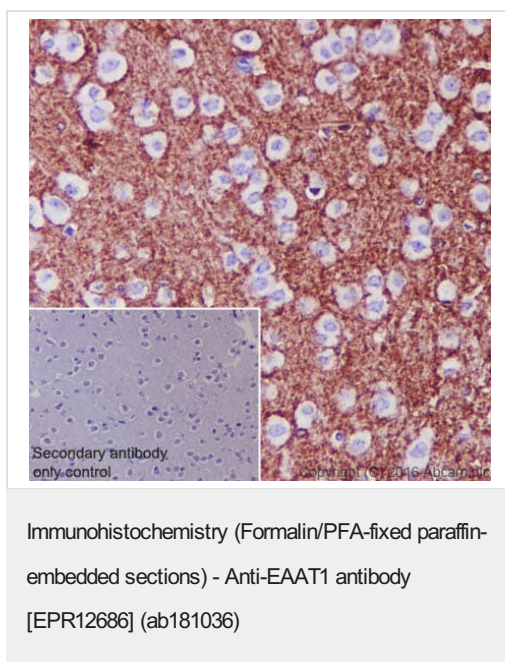
Lysates/proteins at 20 µg per lane.

#### Secondary

**All lanes :** Anti-Rabbit IgG (HRP), specific to the non-reduced form of IgG at 1/2000 dilution

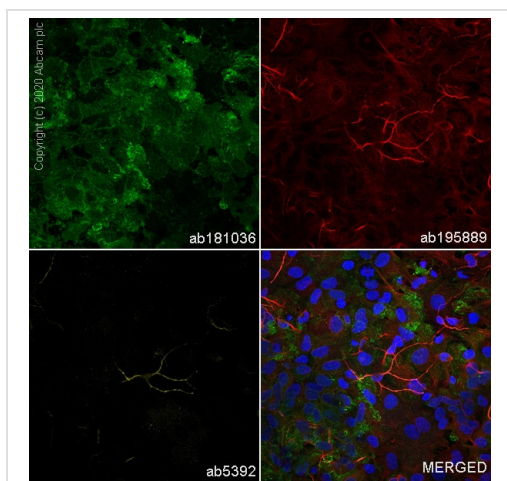
**Predicted band size:** 59 kDa

**Additional bands at:** 59 kDa. We are unsure as to the identity of these extra bands.



ab181036 staining EAAT1 in mouse cerebral cortex tissue sections by Immunohistochemistry (IHC-P - paraformaldehyde-fixed, paraffin-embedded sections). Tissue was fixed with paraformaldehyde and antigen retrieval was by heat mediation in a EDTA buffer. Samples were incubated with primary antibody at a dilution of 1/1000. A goat anti-rabbit IgG H&L (HRP) [ab97051](#) was used as the secondary antibody at 1/500.

**Negative control 1:** PBS in place of primary antibody.

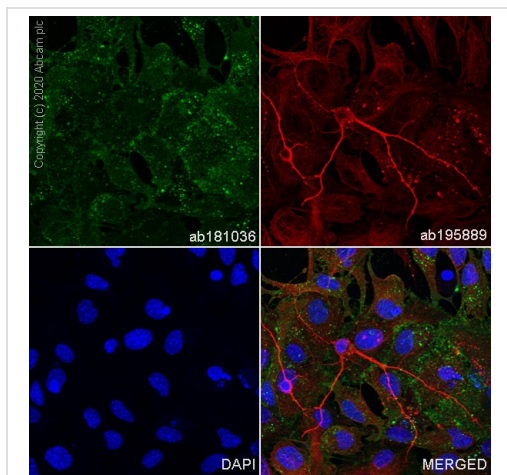


Immunocytochemistry/ Immunofluorescence - Anti-EAAT1 antibody [EPR12686] (ab181036)

Immunofluorescent analysis of 4% Paraformaldehyde-fixed, 0.1% TritonX-100 permeabilized rat primary neural / glia cells labelling EAAT1 with ab181036 at 1/50 dilution, followed by **ab150077** Goat Anti-Rabbit IgG H&L (Alexa Fluor® 488) antibody at 1/1000 2 ug/ml dilution (Green). Confocal image showing positive staining in rat primary glia cell. Confocal scanning Z step was set as 0.3 µm followed by image processing with maximum Z projection.

**ab195889** Anti-alpha Tubulin mouse monoclonal antibody - Microtubule Marker (Alexa Fluor® 594) was used to counterstain tubulin at 1/200 2.5 dilution (Red). The Nuclear counterstain was DAPI (Blue).

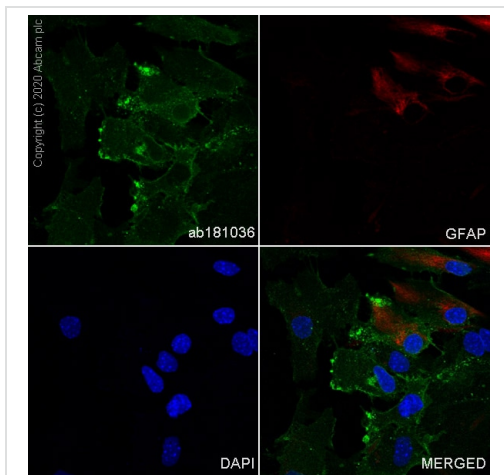
Secondary antibody only control: Secondary antibody is **ab150077** Goat Anti-Rabbit IgG H&L (Alexa Fluor® 488) at 1000 2 ug/ml dilution.



Immunocytochemistry/ Immunofluorescence - Anti-EAAT1 antibody [EPR12686] (ab181036)

Immunofluorescent analysis of 4% Paraformaldehyde-fixed, 0.1% TritonX-100 permeabilized mouse primary neural / glia cells labelling EAAT1 with ab181036 at 1/50 dilution, followed by **ab150077** Goat Anti-Rabbit IgG H&L (Alexa Fluor® 488) antibody at 1/1000 2 ug/ml dilution (Green). Confocal image showing positive staining in mouse primary glia cell. Confocal scanning Z step was set as 0.3 µm followed by image processing with maximum Z projection. **ab195889** Anti-alpha Tubulin mouse monoclonal antibody - Microtubule Marker (Alexa Fluor® 594) was used to counterstain tubulin at 1/200 2.5 dilution (Red). The Nuclear counterstain was DAPI (Blue).

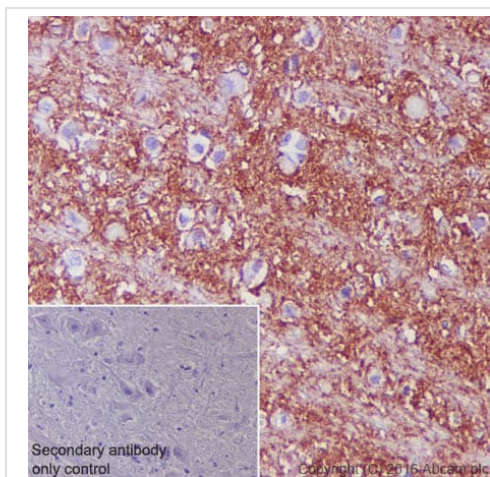
Secondary antibody only control: Secondary antibody is **ab150077** Goat Anti-Rabbit IgG H&L (Alexa Fluor® 488) at 1000 2 ug/ml dilution.



Immunocytochemistry/ Immunofluorescence - Anti-EAAT1 antibody [EPR12686] (ab181036)

Immunofluorescent analysis of 4% Paraformaldehyde-fixed, 0.1% TritonX-100 permeabilized mouse primary neural / glia cells labelling EAAT1 with ab181036 at 1/50 dilution, followed by **ab150077** Goat Anti-Rabbit IgG H&L (Alexa Fluor® 488) antibody at 1/1000 2 ug/ml dilution (Green). Confocal image showing positive staining in mouse primary neural / glia cell. Confocal scanning Z step was set as 0.3  $\mu$ m followed by image processing with maximum Z projection. Anti-Glial Fibrillary Acidic Protein (GFAP) mouse monoclonal antibody was used to counterstain tubulin at 1/100 dilution (Red). The Nuclear counterstain was DAPI (Blue).

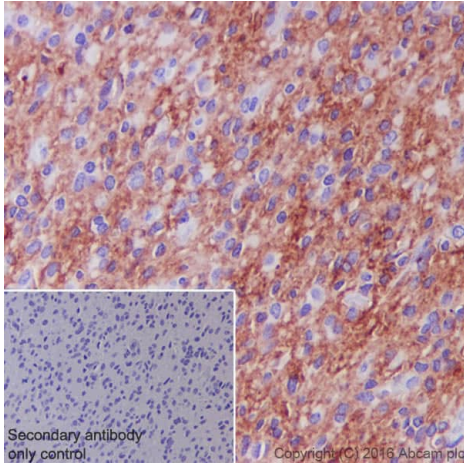
Secondary antibody only control: Secondary antibody is **ab150077** Goat Anti-Rabbit IgG H&L (Alexa Fluor® 488) at 1/1000 2 ug/ml dilution.



Immunohistochemistry (Formalin/PFA-fixed paraffin-embedded sections) - Anti-EAAT1 antibody [EPR12686] (ab181036)

ab181036 staining EAAT1 in rat cerebral cortex tissue sections by Immunohistochemistry (IHC-P - paraformaldehyde-fixed, paraffin-embedded sections). Tissue was fixed with paraformaldehyde and antigen retrieval was by heat mediation in a EDTA buffer. Samples were incubated with primary antibody at a dilution of 1/1000. A goat anti-rabbit IgG H&L (HRP) **ab97051** was used as the secondary antibody at 1/500.

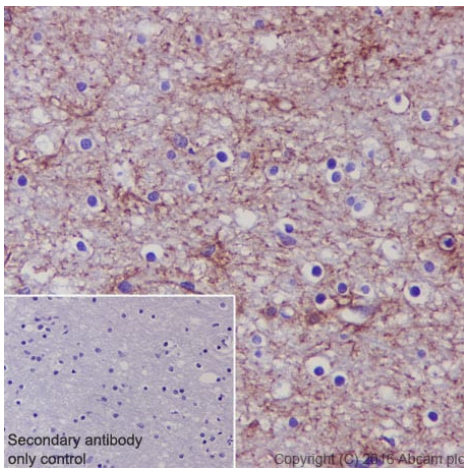




Immunohistochemistry (Formalin/PFA-fixed paraffin-embedded sections) - Anti-EAAT1 antibody [EPR12686] (ab181036)

ab181036 staining EAAT1 in human glioma tissue sections by Immunohistochemistry (IHC-P - paraformaldehyde-fixed, paraffin-embedded sections). Tissue was fixed with paraformaldehyde and antigen retrieval was by heat mediation in a EDTA buffer. Samples were incubated with primary antibody at a dilution of 1/1000. A goat anti-rabbit IgG H&L (HRP) [ab97051](#) was used as the secondary antibody at 1/500.

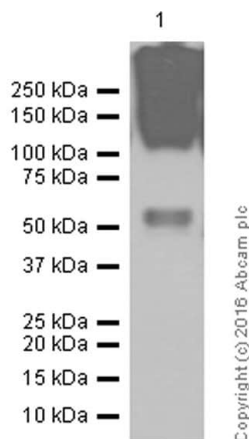
**Negative control 1:** PBS in place of primary antibody.



Immunohistochemistry (Formalin/PFA-fixed paraffin-embedded sections) - Anti-EAAT1 antibody [EPR12686] (ab181036)

ab181036 staining EAAT1 in human cerebral cortex tissue sections by Immunohistochemistry (IHC-P - paraformaldehyde-fixed, paraffin-embedded sections). Tissue was fixed with paraformaldehyde and antigen retrieval was by heat mediation in a EDTA buffer. Samples were incubated with primary antibody at a dilution of 1/1000. A goat anti-rabbit IgG H&L (HRP) [ab97051](#) was used as the secondary antibody at 1/500.

**Negative control 1:** PBS in place of primary antibody.



Western blot - Anti-EAAT1 antibody [EPR12686] (ab181036)

Anti-EAAT1 antibody [EPR12686] (ab181036) at 1/5000 dilution + Human cerebellum at 20 µg

### Secondary

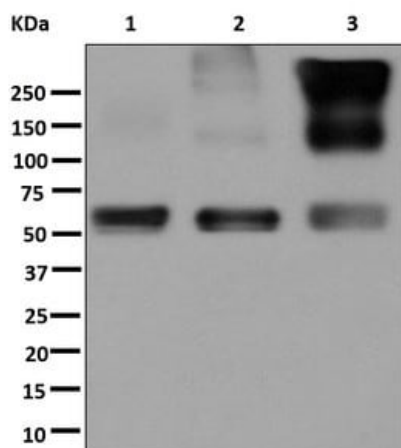
Anti-Rabbit IgG (HRP), specific to the non-reduced form of IgG at 1/2000 dilution

**Predicted band size:** 59 kDa

**Additional bands at:** 59 kDa. We are unsure as to the identity of these extra bands.

**Blocking and diluting buffer:** 5% NFDM/TBST

The band above (100KDa) is dimer



Western blot - Anti-EAAT1 antibody [EPR12686] (ab181036)

**All lanes :** Anti-EAAT1 antibody [EPR12686] (ab181036) at 1/1000 dilution

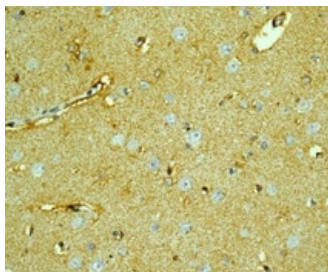
**Lane 1 :** Mouse brain lysate

**Lane 2 :** Rat brain lysate

**Lane 3 :** Human cerebellum lysate

Lysates/proteins at 10 µg per lane.

**Predicted band size:** 59 kDa



Immunohistochemistry (Formalin/PFA-fixed paraffin-embedded sections) - Anti-EAAT1 antibody [EPR12686] (ab181036)

Immunohistochemical staining of EAAT1 in paraffin-embedded human brain tissue using ab181036 at a 1/50 dilution.

Perform heat mediated antigen retrieval with citrate buffer pH 6 before commencing with IHC staining protocol.

### Why choose a recombinant antibody?



**Research with confidence**  
Consistent and reproducible results



**Long-term and scalable supply**  
Recombinant technology



**Success from the first experiment**  
Confirmed specificity



**Ethical standards compliant**  
Animal-free production

Anti-EAAT1 antibody [EPR12686] (ab181036)

**Please note:** All products are "FOR RESEARCH USE ONLY. NOT FOR USE IN DIAGNOSTIC PROCEDURES"

### Our Abpromise to you: Quality guaranteed and expert technical support

---

- Replacement or refund for products not performing as stated on the datasheet
- Valid for 12 months from date of delivery
- Response to your inquiry within 24 hours
- We provide support in Chinese, English, French, German, Japanese and Spanish
- Extensive multi-media technical resources to help you
- We investigate all quality concerns to ensure our products perform to the highest standards

If the product does not perform as described on this datasheet, we will offer a refund or replacement. For full details of the Abpromise, please visit <https://www.abcam.cn/abpromise> or contact our technical team.

### Terms and conditions

---

- Guarantee only valid for products bought direct from Abcam or one of our authorized distributors