

### Anti-EAAT1 antibody ab416

★★★★★ [12 Abreviews](#) [135 References](#) [2 图像](#)

#### 概述

|       |   |
|-------|---|
| 产品名称  | Anti-EAAT1抗体  |
| 描述    | 兔多克隆抗体to EAAT1  |
| 宿主    | Rabbit  |
| 经测试应用 | 适用于: WB, IHC-P  |
| 种属反应性 | 与反应: Rat, Human   |
| 免疫原   | Synthetic peptide corresponding to Rat EAAT1 (C terminal). Corresponding to 20 residues from the C-terminal.<br>Database link: <a href="#">P24942</a><br>(Peptide available as <a href="#">ab127026</a> ) |

#### 常规说明

Glutamate-aspartate transporter is also known as GLAST.

We are constantly working hard to ensure we provide our customers with best in class antibodies. As a result, we are pleased to offer this antibody in a purified format as of 23rd June 2017. The following lots are still unpurified and still in stock as of 23rd June 2017 - GR3178513-1, GR3173220-1, GR3173220-2, GR293270-1, GR320843-2, GR320843-3, GR313192-1, GR320843-1. Lot numbers other than GR3178513-1, GR3173220-1, GR3173220-2, GR293270-1, GR320843-2, GR320843-3, GR313192-1, GR320843-1 will be purified. Please note that the dilutions may need to be adjusted accordingly. Purified antibodies have the advantage of being enriched for the fraction of immunoglobulin that specifically reacts with the target antigen and for having a reduction of serum proteins.

The Life Science industry has been in the grips of a reproducibility crisis for a number of years. Abcam is leading the way in addressing this with our range of recombinant monoclonal antibodies and knockout edited cell lines for gold-standard validation. Please check that this product meets your needs before purchasing.

If you have any questions, special requirements or concerns, please send us an inquiry and/or contact our Support team ahead of purchase. Recommended alternatives for this product can be found below, along with publications, customer reviews and Q&As

#### 性能

|      |  |
|------|--|
| 形式   | Liquid   |
| 存放说明 | Shipped at 4°C. Store at +4°C short term (1-2 weeks). Upon delivery aliquot. Store at -20°C or -80°C. Avoid freeze / thaw cycle. |

|      |   |
|------|---|
| 存储溶液 | Constituents: 2% Sucrose, 1.21% Tris, 0.75% Glycine |
| 纯度   | Protein A purified                                  |
| 克隆   | 多克隆   |
| 同种型  | IgG   |

应用

The Abpromise guarantee      **Abpromise™**承诺保证使用ab416于以下的经测试应用

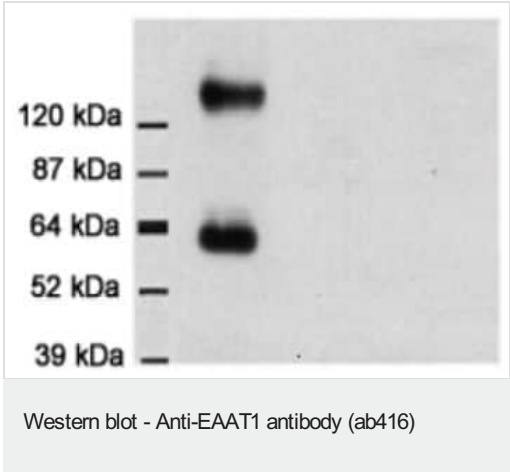
“应用说明”部分 下显示的仅为推荐的起始稀释度;实际最佳的稀释度/浓度应由使用者检定。

| 应用    | Ab评论      | 说明  |
|-------|-----------|---|
| WB    | ★★★★★ (3) | 1/200 - 1/5000. Predicted molecular weight: 60 kDa. |
| IHC-P | ★★★★★ (3) | 1/50 - 1/500.                                       |

靶标

|       |  |
|-------|--|
| 功能    | Transports L-glutamate and also L- and D-aspartate. Essential for terminating the postsynaptic action of glutamate by rapidly removing released glutamate from the synaptic cleft. Acts as a symport by cotransporting sodium. |
| 组织特异性 | Highly expressed in cerebellum, but also found in frontal cortex, hippocampus and basal ganglia.   |
| 疾病相关  | Defects in SLC1A3 are the cause of episodic ataxia type 6 (EA6) [MIM:612656]. EA6 is characterized by episodic ataxia, seizures, migraine and alternating hemiplegia.  |
| 序列相似性 | Belongs to the sodium:dicarboxylate (SDF) symporter (TC 2.A.23) family. SLC1A3 subfamily.  |
| 翻译后修饰 | Glycosylated.  |
| 细胞定位  | Membrane.  |

图片

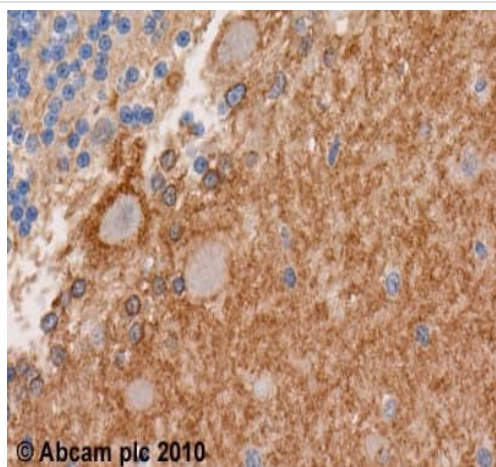


Anti-EAAT1 antibody (ab416) + Rat brain cortex

**Predicted band size:** 60 kDa

**Observed band size:** 60 kDa

**Additional bands at:** 150 kDa (possible dimer)



Immunohistochemistry (Formalin/PFA-fixed paraffin-embedded sections) - Anti-EAAT1 antibody (ab416)

ab416 (1:500) staining EAAT1 in human cerebellum using an automated system (DAKO Autostainer Plus). Using this protocol there is strong staining of membrane cells in the purkinje glial region

Sections were rehydrated and antigen retrieved with the Dako 3 in 1 AR buffer EDTA pH 9.0 in a DAKO PT link. Slides were peroxidase blocked in 3% H<sub>2</sub>O<sub>2</sub> in methanol for 10 mins. They were then blocked with Dako Protein block for 10 minutes (containing casein 0.25% in PBS) then incubated with primary antibody for 20 min and detected with Dako envision flex amplification kit for 30 minutes. Colorimetric detection was completed with Diaminobenzidine for 5 minutes. Slides were counterstained with Haematoxylin and coverslipped under DePeX. Please note that, for manual staining, optimization of primary antibody concentration and incubation time is recommended. Signal amplification may be required.

**Please note:** All products are "FOR RESEARCH USE ONLY. NOT FOR USE IN DIAGNOSTIC PROCEDURES"

### Our Abpromise to you: Quality guaranteed and expert technical support

- Replacement or refund for products not performing as stated on the datasheet
- Valid for 12 months from date of delivery
- Response to your inquiry within 24 hours
- We provide support in Chinese, English, French, German, Japanese and Spanish
- Extensive multi-media technical resources to help you
- We investigate all quality concerns to ensure our products perform to the highest standards

If the product does not perform as described on this datasheet, we will offer a refund or replacement. For full details of the Abpromise, please visit <https://www.abcam.cn/abpromise> or contact our technical team.

### Terms and conditions

- Guarantee only valid for products bought direct from Abcam or one of our authorized distributors