


### Anti-E2F1 antibody ab112580

★★★★★ [1 Abreviews](#) [14 References](#) [1 图像](#)

#### 概述

|       |   |
|-------|---|
| 产品名称  | Anti-E2F1抗体   |
| 描述    | 兔多克隆抗体to E2F1   |
| 宿主    | Rabbit  |
| 经测试应用 | 适用于: WB<br>不适用于: ICC/IF   |
| 种属反应性 | 与反应: Mouse<br>预测可用于: Rabbit, Horse, Cow, Dog, Pig, Chimpanzee, Macaque monkey, Gorilla, Chinese hamster, Orangutan    |
| 免疫原   | Synthetic peptide. This information is proprietary to Abcam and/or its suppliers.   |
| 阳性对照  | WB: MEF1 whole cell lysate, NIH 3T3 whole cell lysate lysate  |
| 常规说明  | <p>The Life Science industry has been in the grips of a reproducibility crisis for a number of years. Abcam is leading the way in addressing this with our range of recombinant monoclonal antibodies and knockout edited cell lines for gold-standard validation. Please check that this product meets your needs before purchasing.</p> <p>If you have any questions, special requirements or concerns, please send us an inquiry and/or contact our Support team ahead of purchase. Recommended alternatives for this product can be found below, along with publications, customer reviews and Q&amp;As</p> |

#### 性能

|      |   |
|------|---|
| 形式   | Liquid  |
| 存放说明 | Shipped at 4°C. Store at +4°C short term (1-2 weeks). Upon delivery aliquot. Store at -20°C or -80°C. Avoid freeze / thaw cycle.  |
| 存储溶液 | pH: 7.40<br>Preservative: 0.02% Sodium azide<br>Constituent: PBS  |
| 纯度   | Batches of this product that have a concentration < 1mg/ml may have BSA added as a stabilising agent. If you would like information about the formulation of a specific lot, please contact our scientific support team who will be happy to help.<br>Immunogen affinity purified |

克隆

多克隆

同种型

IgG

应用

The Abpromise guarantee

Abpromise™承诺保证使用ab112580于以下的经测试应用

“应用说明”部分 下显示的仅为推荐的起始稀释度;实际最佳的稀释度/浓度应由使用者检定。

| 应用 | Ab评论 | 说明   |
|----|------|--|
| WB |      | Use a concentration of 1 µg/ml. Detects a band of approximately 55 kDa (predicted molecular weight: 47 kDa). |

应用说明

Is unsuitable for ICC/IF.

靶标

功能

Transcription activator that binds DNA cooperatively with dp proteins through the E2 recognition site, 5'-TTTC[CG]CGC-3' found in the promoter region of a number of genes whose products are involved in cell cycle regulation or in DNA replication. The DRTF1/E2F complex functions in the control of cell-cycle progression from G1 to S phase. E2F-1 binds preferentially RB1 protein, in a cell-cycle dependent manner. It can mediate both cell proliferation and p53-dependent apoptosis.

序列相似性

Belongs to the E2F/DP family.

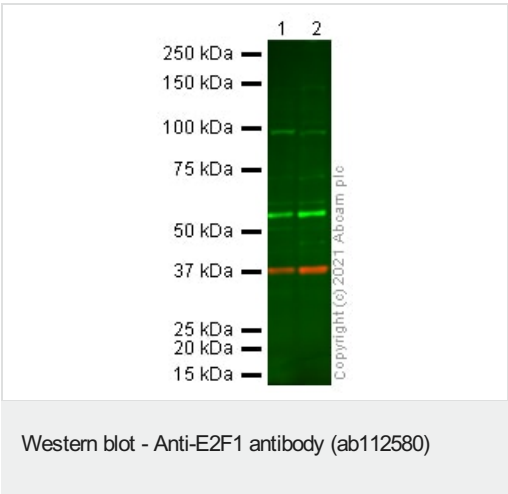
翻译后修饰

Phosphorylated by CDK2 and cyclin A-CDK2 in the S-phase.  
Acetylation stimulates DNA-binding. Enhanced under stress conditions such as DNA damage and inhibited by retinoblastoma protein pRB. Regulated by KAP1/TRIM28 which recruits HDAC1 to E2F1 resulting in deacetylation. Acetylated by P/CAF/KAT2B.

细胞定位

Nucleus.

图片



All lanes : Anti-E2F1 antibody (ab112580) at 1 µg/ml

Lane 1 : MEF1 whole cell lysate  
Lane 2 : NIH 3T3 whole cell lysate

Lysates/proteins at 20 µg per lane.

Secondary  
All lanes : Goat anti-Rabbit IgG H&L (IRDye® 800CW)  
preadsorbed at 1/10000 dilution

Predicted band size: 47 kDa  
Observed band size: 55 kDa

Gel type: MOPS

Blocking buffer: 2% BSA block

Loading Control: GAPDH (**ab8245** @ 0.1 ug/ml). Secondary: Goat anti-Mouse IgG H&L (IRDye® 680RD)

**Please note:** All products are "FOR RESEARCH USE ONLY. NOT FOR USE IN DIAGNOSTIC PROCEDURES"

### **Our Abpromise to you: Quality guaranteed and expert technical support**

---

- Replacement or refund for products not performing as stated on the datasheet
- Valid for 12 months from date of delivery
- Response to your inquiry within 24 hours
- We provide support in Chinese, English, French, German, Japanese and Spanish
- Extensive multi-media technical resources to help you
- We investigate all quality concerns to ensure our products perform to the highest standards

If the product does not perform as described on this datasheet, we will offer a refund or replacement. For full details of the Abpromise, please visit <https://www.abcam.cn/abpromise> or contact our technical team.

### **Terms and conditions**

---

- Guarantee only valid for products bought direct from Abcam or one of our authorized distributors