

Anti-E Cadherin (phospho S838 + S840) antibody [EP913(2)Y] - BSA and Azide free ab239883

重组 RabMAb

1 References **6 图像**

概述

产品名称	Anti-E Cadherin (phospho S838 + S840)抗体[EP913(2)Y] - BSA and Azide free
描述	兔单克隆抗体[EP913(2)Y] to E Cadherin (phospho S838 + S840) - BSA and Azide free
宿主	Rabbit
经测试应用	适用于: IHC-P, WB 不适用于: Flow Cyt, ICC/IF or IP
种属反应性	与反应: Mouse, Rat, Human
免疫原	Synthetic peptide. This information is proprietary to Abcam and/or its suppliers.
阳性对照	IHC: Human endometrium tissue, rat and mouse liver tissue; WB: Human, mouse, and rat brain tissue lysates.
常规说明	<p>ab239883 is the carrier-free version of ab76319.</p> <p>Our carrier-free antibodies are typically supplied in a PBS-only formulation, purified and free of BSA, sodium azide and glycerol. The carrier-free buffer and high concentration allow for increased conjugation efficiency.</p> <p>This conjugation-ready format is designed for use with fluorochromes, metal isotopes, oligonucleotides, and enzymes, which makes them ideal for antibody labelling, functional and cell-based assays, flow-based assays (e.g. mass cytometry) and Multiplex Imaging applications.</p> <p>Use our conjugation kits for antibody conjugates that are ready-to-use in as little as 20 minutes with <1 minute hands-on-time and 100% antibody recovery: available for fluorescent dyes, HRP, biotin and gold.</p> <p>This product is compatible with the Maxpar[®] Antibody Labeling Kit from Fluidigm, without the need for antibody preparation. Maxpar[®] is a trademark of Fluidigm Canada Inc.</p> <p>This product is a recombinant monoclonal antibody, which offers several advantages including:</p> <ul style="list-style-type: none"> - High batch-to-batch consistency and reproducibility - Improved sensitivity and specificity - Long-term security of supply - Animal-free production <p>For more information see here.</p> <p>Our RabMAb[®] technology is a patented hybridoma-based technology for making rabbit monoclonal antibodies. For details on our patents, please refer to RabMAb[®] patents.</p>

性能	
形式	Liquid
存放说明	Shipped at 4°C. Store at +4°C. Do Not Freeze.
存储溶液	pH: 7.2 Constituent: PBS
无载体	是
纯度	Protein A purified
克隆	单克隆
克隆编号	EP913(2)Y
同种型	IgG

应用

The Abpromise guarantee

Abpromise™承诺保证使用ab239883于以下的经测试应用

“应用说明”部分 下显示的仅为推荐的起始稀释度;实际最佳的稀释度/浓度应由使用者检定。

应用	Ab评论	说明
IHC-P		Use at an assay dependent concentration. Perform heat mediated antigen retrieval before commencing with IHC staining protocol. See IHC antigen retrieval protocols .
WB		Use at an assay dependent concentration. Predicted molecular weight: 97 kDa.

应用说明

Is unsuitable for Flow Cyt,ICC/IF or IP.

靶标

功能	<p>Cadherins are calcium-dependent cell adhesion proteins. They preferentially interact with themselves in a homophilic manner in connecting cells; cadherins may thus contribute to the sorting of heterogeneous cell types. CDH1 is involved in mechanisms regulating cell-cell adhesions, mobility and proliferation of epithelial cells. Has a potent invasive suppressor role. It is a ligand for integrin alpha-E/beta-7.</p> <p>E-Cad/CTF2 promotes non-amyloidogenic degradation of Abeta precursors. Has a strong inhibitory effect on APP C99 and C83 production.</p>
组织特异性	Non-neural epithelial tissues.
疾病相关	<p>Defects in CDH1 are the cause of hereditary diffuse gastric cancer (HDGC) [MIM:137215]. An autosomal dominant cancer predisposition syndrome with increased susceptibility to diffuse gastric cancer. Diffuse gastric cancer is a malignant disease characterized by poorly differentiated infiltrating lesions resulting in thickening of the stomach. Malignant tumors start in the stomach, can spread to the esophagus or the small intestine, and can extend through the stomach wall to nearby lymph nodes and organs. It also can metastasize to other parts of the body. Note=Heterozygous germline mutations CDH1 are responsible for familial cases of diffuse</p>

gastric cancer. Somatic mutations in the has also been found in patients with sporadic diffuse gastric cancer and lobular breast cancer.

Defects in CDH1 are a cause of susceptibility to endometrial cancer (ENDMC) [MIM:608089]. Defects in CDH1 are a cause of susceptibility to ovarian cancer (OC) [MIM:167000]. Ovarian cancer common malignancy originating from ovarian tissue. Although many histologic types of ovarian neoplasms have been described, epithelial ovarian carcinoma is the most common form. Ovarian cancers are often asymptomatic and the recognized signs and symptoms, even of late-stage disease, are vague. Consequently, most patients are diagnosed with advanced disease.

序列相似性

翻译后修饰

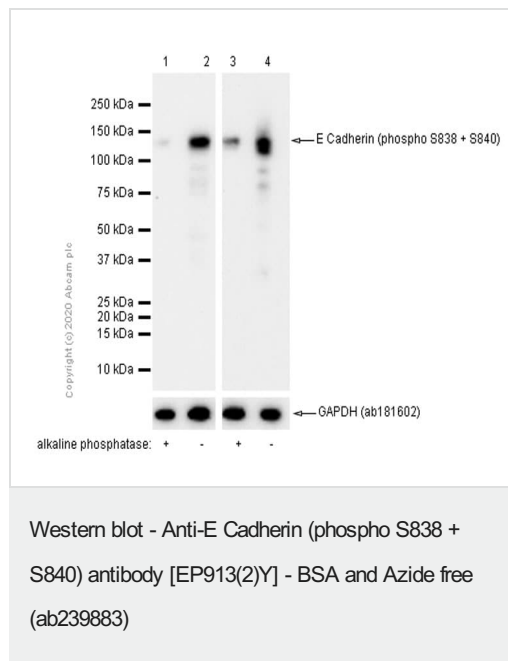
Contains 5 cadherin domains.

During apoptosis or with calcium influx, cleaved by a membrane-bound metalloproteinase (ADAM10), PS1/gamma-secretase and caspase-3 to produce fragments of about 38 kDa (E-CAD/CTF1), 33 kDa (E-CAD/CTF2) and 29 kDa (E-CAD/CTF3), respectively. Processing by the metalloproteinase, induced by calcium influx, causes disruption of cell-cell adhesion and the subsequent release of beta-catenin into the cytoplasm. The residual membrane-tethered cleavage product is rapidly degraded via an intracellular proteolytic pathway. Cleavage by caspase-3 releases the cytoplasmic tail resulting in disintegration of the actin microfilament system. The gamma-secretase-mediated cleavage promotes disassembly of adherens junctions.

细胞定位

Cell junction. Cell membrane. Endosome. Golgi apparatus > trans-Golgi network. Colocalizes with DLGAP5 at sites of cell-cell contact in intestinal epithelial cells. Anchored to actin microfilaments through association with alpha-, beta- and gamma-catenin. Sequential proteolysis induced by apoptosis or calcium influx, results in translocation from sites of cell-cell contact to the cytoplasm. Colocalizes with RAB11A endosomes during its transport from the Golgi apparatus to the plasma membrane.

图片



All lanes : Anti-E Cadherin (phospho S838 + S840) antibody [EP913(2)Y] ([ab76319](#)) at 1/500000 dilution (Purified)

Lane 1 : Human brain lysate, membrane treated with Alkaline Phosphatase for 1 hour

Lane 2 : Human brain lysate

Lane 3 : Rat brain lysate, membrane treated with Alkaline Phosphatase for 1 hour

Lane 4 : Rat brain lysate

Lysates/proteins at 15 µg per lane.

Secondary

All lanes : Goat Anti-Rabbit IgG H&L (HRP) ([ab97051](#)) at 1/20000 dilution

Predicted band size: 97 kDa

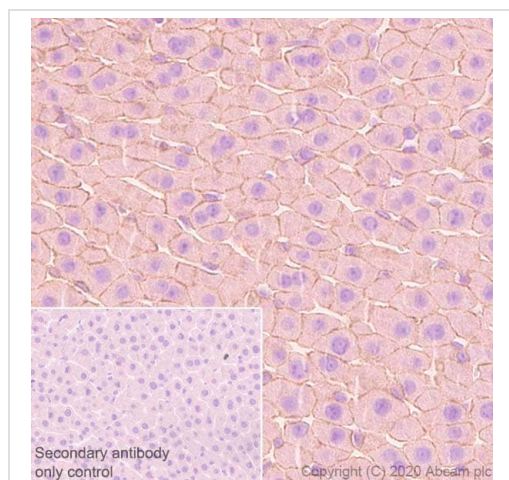
Observed band size: 145 kDa

This data was developed using **ab76319**, the same antibody clone in a different buffer formulation.

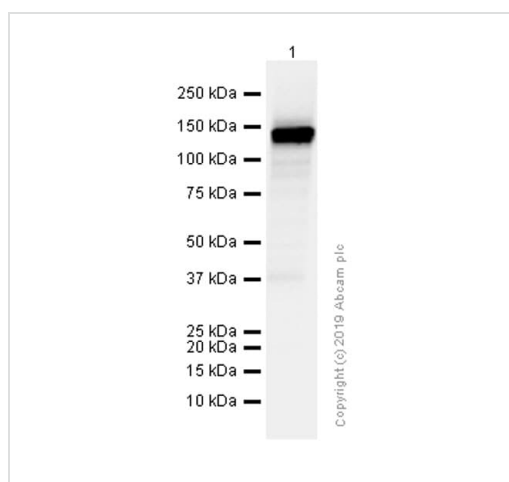
Blocking buffer: 5% NFDM/TBST

This data was developed using **ab76319** the same antibody clone in a different buffer formulation.

Immunohistochemistry (Formalin/PFA-fixed paraffin-embedded sections) analysis of rat liver tissue sections labeling E Cadherin with Purified **ab76319** at 1:80000 dilution (0.009 µg/ml). Heat mediated antigen retrieval using Bond™ Epitope Retrieval Solution 2 (pH 9.0). Rabbit specific IHC polymer detection kit HRP/DAB (**ab209101**) was used as the secondary antibody. Negative control: PBS instead of the primary antibody. Hematoxylin was used as a counterstain.



Immunohistochemistry (Formalin/PFA-fixed paraffin-embedded sections) - Anti-E Cadherin (phospho S838 + S840) antibody [EP913(2)Y] - BSA and Azide free (ab239883)



Western blot - Anti-E Cadherin (phospho S838 + S840) antibody [EP913(2)Y] - BSA and Azide free (ab239883)

Anti-E Cadherin (phospho S838 + S840) antibody [EP913(2)Y] (**ab76319**) at 1/10000 dilution (Purified) + Mouse brain lysate at 15 µg

Secondary

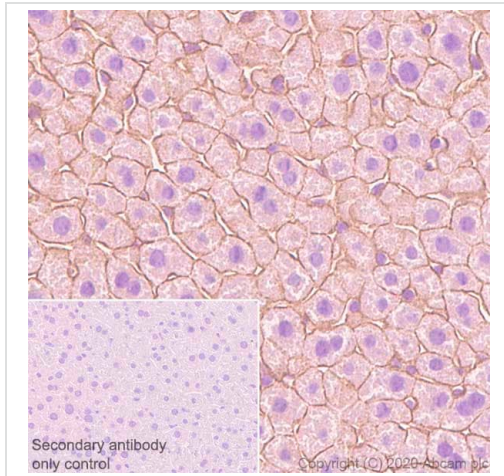
Goat Anti-Rabbit IgG H&L (HRP) (**ab97051**) at 1/20000 dilution

Predicted band size: 97 kDa

Observed band size: 145 kDa

This data was developed using **ab76319**, the same antibody clone in a different buffer formulation.

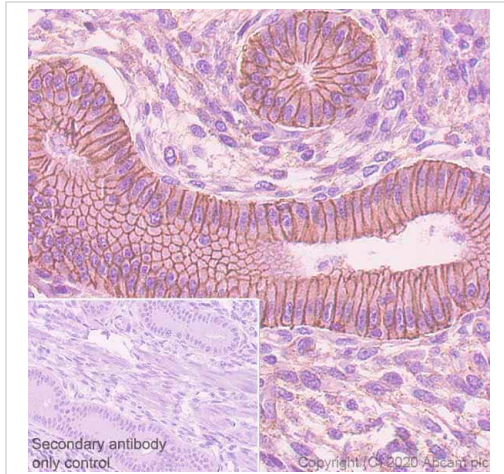
Blocking buffer: 5% NFDM/TBST



Immunohistochemistry (Formalin/PFA-fixed paraffin-embedded sections) - Anti-E Cadherin (phospho S838 + S840) antibody [EP913(2)Y] - BSA and Azide free (ab239883)

This data was developed using **ab76319** the same antibody clone in a different buffer formulation.

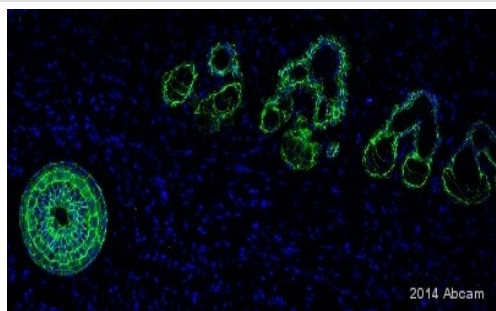
Immunohistochemistry (Formalin/PFA-fixed paraffin-embedded sections) analysis of mouse liver tissue sections labeling E Cadherin with Purified **ab76319** at 1:80000 dilution (0.009 µg/ml). Heat mediated antigen retrieval using Bond™ Epitope Retrieval Solution 2 (pH 9.0). Rabbit specific IHC polymer detection kit HRP/DAB (**ab209101**) was used as the secondary antibody. Negative control: PBS instead of the primary antibody. Hematoxylin was used as a counterstain.



Immunohistochemistry (Formalin/PFA-fixed paraffin-embedded sections) - Anti-E Cadherin (phospho S838 + S840) antibody [EP913(2)Y] - BSA and Azide free (ab239883)

This data was developed using **ab76319** the same antibody clone in a different buffer formulation.

Immunohistochemistry (Formalin/PFA-fixed paraffin-embedded sections) analysis of human endometrium tissue sections labeling E Cadherin with Purified **ab76319** at 1:80000 dilution (0.009 µg/ml). Heat mediated antigen retrieval using Bond™ Epitope Retrieval Solution 2 (pH 9.0). Rabbit specific IHC polymer detection kit HRP/DAB (**ab209101**) was used as the secondary antibody. Negative control: PBS instead of the primary antibody. Hematoxylin was used as a counterstain.



Immunohistochemistry (Formalin/PFA-fixed paraffin-embedded sections) - Anti-E Cadherin (phospho S838 + S840) antibody [EP913(2)Y] - BSA and Azide free (ab239883)

This image is courtesy of an anonymous Abreview.

Unpurified **ab76319** staining E Cadherin in mouse skin (pilosebaceous units) tissue sections by Immunohistochemistry (IHC-P - paraformaldehyde-fixed, paraffin-embedded sections). Tissue was fixed with paraformaldehyde, permeabilized with Tween-20 and blocked with 10% normal donkey serum + 1% serum for 40 minutes at room temperature; antigen retrieval was by heat mediation in a citrate buffer, pH 6. Samples were incubated with primary antibody (1/400 in 1% BSA) for 16 hours at 4°C. An Alexa Fluor® 488-conjugated donkey anti-rabbit IgG polyclonal (1/400) was used as the secondary antibody.

This data was developed using the same antibody clone in a different buffer formulation containing PBS, BSA, glycerol, and sodium azide (**ab76319**).

Please note: All products are "FOR RESEARCH USE ONLY. NOT FOR USE IN DIAGNOSTIC PROCEDURES"

Our Abpromise to you: Quality guaranteed and expert technical support

- Replacement or refund for products not performing as stated on the datasheet
- Valid for 12 months from date of delivery
- Response to your inquiry within 24 hours
- We provide support in Chinese, English, French, German, Japanese and Spanish
- Extensive multi-media technical resources to help you
- We investigate all quality concerns to ensure our products perform to the highest standards

If the product does not perform as described on this datasheet, we will offer a refund or replacement. For full details of the Abpromise, please visit <https://www.abcam.cn/abpromise> or contact our technical team.

Terms and conditions

- Guarantee only valid for products bought direct from Abcam or one of our authorized distributors