

Anti-Drosha antibody ab12286

★★★★★ 9 Abreviews 93 References 6 图像

概述	
产品名称	Anti-Drosha抗体
描述	兔多克隆抗体to Drosha
宿主	Rabbit
特异性	From Jan 2024, QC testing of replenishment batches of this polyclonal changed. All tested and expected application and reactive species combinations are still covered by our Abcam product promise. However, we no longer test all applications. For more information on a specific batch, please contact our Scientific Support who will be happy to help.
经测试应用	适用于: WB, ICC
种属反应性	与反应: Mouse, Human
免疫原	Synthetic peptide corresponding to Human Drosha aa 1-100 (internal sequence). (Peptide available as <a href="#">ab12307</a> )
常规说明	Three isoforms of 159, 156 and 143 kDa.  The Life Science industry has been in the grips of a reproducibility crisis for a number of years. Abcam is leading the way in addressing this with our range of recombinant monoclonal antibodies and knockout edited cell lines for gold-standard validation. Please check that this product meets your needs before purchasing.  If you have any questions, special requirements or concerns, please send us an inquiry and/or contact our Support team ahead of purchase. Recommended alternatives for this product can be found below, along with publications, customer reviews and Q&As
性能	
形式	Liquid
存放说明	Shipped at 4°C. Store at +4°C short term (1-2 weeks). Upon delivery aliquot. Store at -20°C or -80°C. Avoid freeze / thaw cycle.
存储溶液	pH: 7.40 Preservative: 0.02% Sodium azide Constituent: PBS  Batches of this product that have a concentration < 1mg/ml may have BSA added as a stabilising agent. If you would like information about the formulation of a specific lot, please contact our scientific support team who will be happy to help.

纯度	Immunogen affinity purified
克隆	多克隆
同种型	IgG

应用

**The Abpromise guarantee**      **Abpromise™**承诺保证使用ab12286于以下的经测试应用

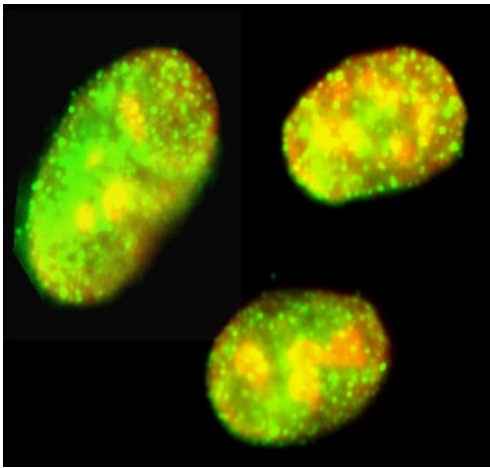
“应用说明”部分 下显示的仅为推荐的起始稀释度;实际最佳的稀释度/浓度应由使用者检定。

应用	Ab评论	说明
WB	★★★★★ (4)	Use a concentration of 1 µg/ml. Predicted molecular weight: 159 kDa.
ICC	★★★★★ (1)	Use a concentration of 1 µg/ml.

靶标

功能	Ribonuclease III double-stranded (ds) RNA-specific endoribonuclease that is involved in the initial step of microRNA (miRNA) biogenesis. Component of the microprocessor complex that is required to process primary miRNA transcripts (pri-miRNAs) to release precursor miRNA (pre-miRNA) in the nucleus. Within the microprocessor complex, DROSHA cleaves the 3' and 5' strands of a stem-loop in pri-miRNAs (processing center 11 bp from the dsRNA-ssRNA junction) to release hairpin-shaped pre-miRNAs that are subsequently cut by the cytoplasmic DICER to generate mature miRNAs. Involved also in pre-rRNA processing. Cleaves double-strand RNA and does not cleave single-strand RNA. Involved in the formation of GW bodies.
组织特异性	Ubiquitous.
序列相似性	Contains 1 DRBM (double-stranded RNA-binding) domain. Contains 2 RNase III domains.
结构域	The 2 RNase III domains form an intramolecular dimer where the domain 1 cuts the 3'strand while the domain 2 cleaves the 5'strand of pri-miRNAs, independently of each other.
细胞定位	Nucleus. Nucleus > nucleolus. A fraction is translocated to the nucleolus during the S phase of the cell cycle. Localized in GW bodies (GWBs), also known as P-bodies.

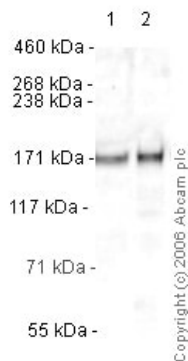
图片



Immunocytochemistry - Anti-Drosha antibody - ChIP  
Grade (ab12286)

This image is courtesy of Ahmad M. Khalil and Daniel J. Driscoll, University of Florida College of Medicine Genetics Institute.

Human female amniocytes immunostained with ab12286 Drosha (FITC) (1/25 dilution). The DNA is labelled red with propidium iodide. This image was submitted as part of a review by Ahmad Khalil.



Western blot - Anti-Drosha antibody - ChIP Grade  
(ab12286)

**All lanes :** Anti-Drosha antibody (ab12286) at 1 µg/ml

**Lane 1 :** HeLa (Human epithelial carcinoma cell line) Whole Cell Lysate

**Lane 2 :** HeLa (Human epithelial carcinoma cell line) Nuclear Lysate

Lysates/proteins at 20 µg per lane.

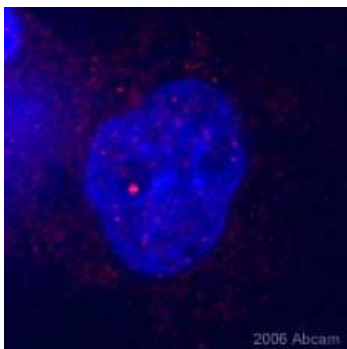
### Secondary

**All lanes :** Goat polyclonal to Rabbit IgG (Alexa Fluor® 680) at 1/15000 dilution

Performed under reducing conditions.

**Predicted band size:** 159 kDa

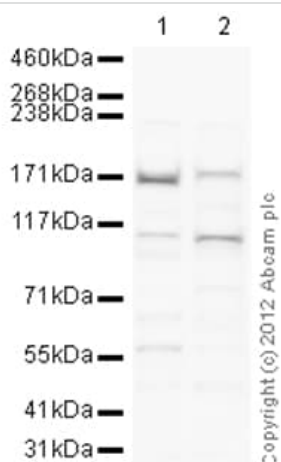
**Observed band size:** 170 kDa



Immunocytochemistry - Anti-Drosha antibody  
(ab12286)

ab12286 at a 1/25 dilution staining human HeLa cells by immunocytochemistry. The antibody was incubated with the cells for 1 hour and then detected using a Cy3 conjugated donkey anti-rabbit polyclonal antibody.

This image is courtesy of an Abreview submitted on **7 February 2006**.



Western blot - Anti-Drosha antibody - ChIP Grade  
(ab12286)

**All lanes** : Anti-Drosha antibody (ab12286) at 1 µg/ml

**Lane 1** : HeLa (Human epithelial carcinoma cell line) Nuclear Lysate

**Lane 2** : NIH 3T3 (Mouse embryonic fibroblast cell line) Nuclear Lysate

Lysates/proteins at 20 µg per lane.

#### Secondary

**All lanes** : Goat Anti-Rabbit IgG H&L (HRP) preadsorbed (**ab97080**) at 1/5000 dilution

Developed using the ECL technique.

Performed under reducing conditions.

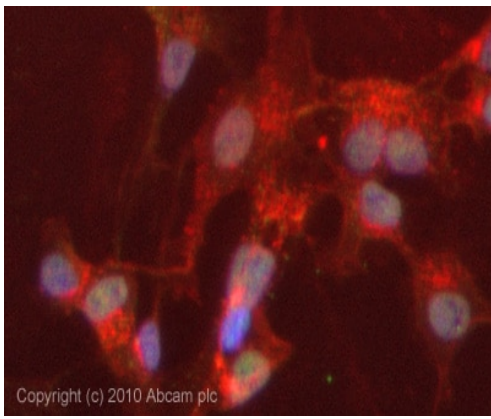
**Predicted band size:** 159 kDa

**Observed band size:** 170 kDa

**Additional bands at:** 115 kDa. We are unsure as to the identity of these extra bands.

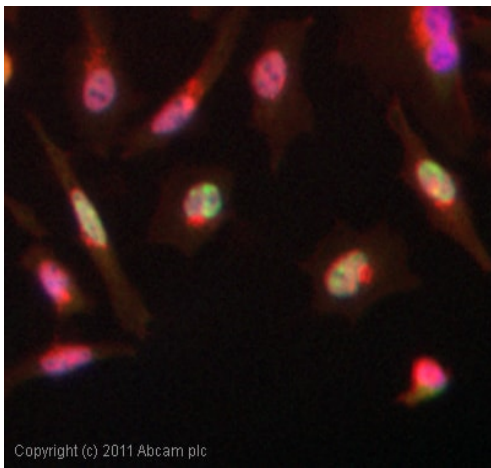
**Exposure time:** 12 minutes

Abcam recommends using milk as the blocking agent. Abcam welcomes customer feedback and would appreciate any comments regarding this product and the data presented above.



Immunocytochemistry - Anti-Drosha antibody  
(ab12286)

ICC/IF image of ab12286 stained HepG2 cells. The cells were 4% PFA fixed (10 min) and then incubated in 1%BSA / 10% normal goat serum / 0.3M glycine in 0.1% PBS-Tween for 1h to permeabilise the cells and block non-specific protein-protein interactions. The cells were then incubated with the antibody (ab12286, 1µg/ml) overnight at +4°C. The secondary antibody (green) was Alexa Fluor® 488 goat anti-rabbit IgG (H+L) used at a 1/1000 dilution for 1h. Alexa Fluor® 594 WGA was used to label plasma membranes (red) at a 1/200 dilution for 1h. DAPI was used to stain the cell nuclei (blue) at a concentration of 1.43µM.



Immunocytochemistry - Anti-Drosha antibody  
(ab12286)

ICC/IF image of ab12286 stained Hela cells. The cells were 4% PFA fixed (10 min) and then incubated in 1%BSA / 10% normal goat serum / 0.3M glycine in 0.1% PBS-Tween for 1h to permeabilise the cells and block non-specific protein-protein interactions. The cells were then incubated with the antibody (**ab12286**, 5µg/ml) overnight at +4°C. The secondary antibody (green) was DyLight® 488 goat anti-rabbit IgG - H&L, pre-adsorbed (**ab96899**) used at a 1/250 dilution for 1h. Alexa Fluor® 594 WGA was used to label plasma membranes (red) at a 1/200 dilution for 1h. DAPI was used to stain the cell nuclei (blue) at a concentration of 1.43µM.

**Please note:** All products are "FOR RESEARCH USE ONLY. NOT FOR USE IN DIAGNOSTIC PROCEDURES"

### Our Abpromise to you: Quality guaranteed and expert technical support

- Replacement or refund for products not performing as stated on the datasheet
- Valid for 12 months from date of delivery
- Response to your inquiry within 24 hours
- We provide support in Chinese, English, French, German, Japanese and Spanish
- Extensive multi-media technical resources to help you
- We investigate all quality concerns to ensure our products perform to the highest standards

If the product does not perform as described on this datasheet, we will offer a refund or replacement. For full details of the Abpromise, please visit <https://www.abcam.cn/abpromise> or contact our technical team.

## Terms and conditions

---

- Guarantee only valid for products bought direct from Abcam or one of our authorized distributors