

Anti-Drebrin antibody ab11068

★★★★★ [5 Abreviews](#) [25 References](#) [3 图像](#)

概述

产品名称	Anti-Drebrin抗体
描述	兔多克隆抗体to Drebrin
宿主	Rabbit
经测试应用	适用于: ICC, WB, IHC-P, ICC/IF
种属反应性	与反应: Mouse, Rat, Chicken, Human
免疫原	Synthetic peptide conjugated to KLH, corresponding to amino acids 22-42 of Human Drebrin.
常规说明	<p>Storage in frost-free freezers is not recommended. If slight turbidity occurs upon prolonged storage, clarify the solution by centrifugation before use. Working dilutions should be discarded if not used within 12 hours.</p> <p>The Life Science industry has been in the grips of a reproducibility crisis for a number of years. Abcam is leading the way in addressing this with our range of recombinant monoclonal antibodies and knockout edited cell lines for gold-standard validation. Please check that this product meets your needs before purchasing.</p> <p>If you have any questions, special requirements or concerns, please send us an inquiry and/or contact our Support team ahead of purchase. Recommended alternatives for this product can be found below, along with publications, customer reviews and Q&As</p>

性能

形式	Liquid
存放说明	Shipped at 4°C. Store at +4°C short term (1-2 weeks). Upon delivery aliquot. Store at -20°C or -80°C. Avoid freeze / thaw cycle.
存储溶液	pH: 7.40 Preservative: 0.097% Sodium azide Constituent: 0.0268% PBS
纯度	IgG fraction
纯化说明	Whole antiserum is fractionated and then further purified by ion-exchange chromatography to provide the IgG fraction of antiserum that is essentially free of other rabbit serum proteins.
克隆	多克隆
同种型	IgG

应用

The Abpromise guarantee **Abpromise™**承诺保证使用ab11068于以下的经测试应用

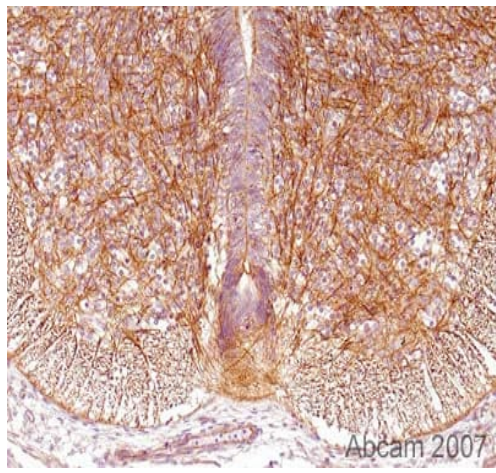
“应用说明”部分下显示的仅为推荐的起始稀释度;实际最佳的稀释度/浓度应由使用者检定。

应用	Ab评论	说明
ICC	★★★★★ (1)	Use at an assay dependent concentration.
WB		Use at an assay dependent concentration. Predicted molecular weight: 71 kDa. ab11068 recognizes drebrin E/A isoforms (95 -120 kDa) and s-drebrin/A2 (approximately 45 kDa) by immunoblotting. An additional unknown band of 20 kDa may be observed in some preparations.
IHC-P	★★★★★ (4)	Use at an assay dependent concentration.
ICC/IF		Use a concentration of 1 µg/ml.

靶标

功能	Drebrins might play some role in cell migration, extension of neuronal processes and plasticity of dendrites, respectively.
组织特异性	Brain neurons. Also found in the heart, placenta, skeletal muscle, kidney and pancreas.
序列相似性	Contains 1 ADF-H domain.
细胞定位	Cytoplasm.

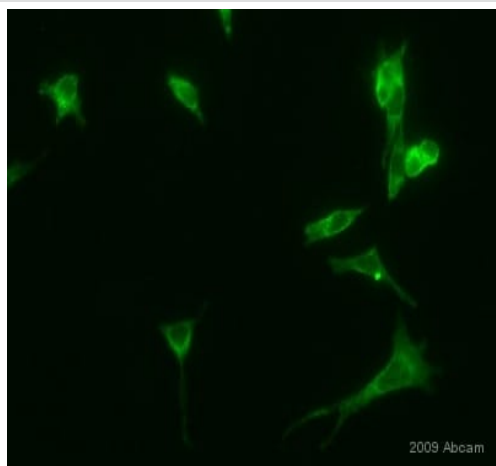
图片



Immunohistochemistry (Formalin/PFA-fixed paraffin-embedded sections) - Anti-Drebrin antibody (ab11068)

This image is courtesy of Carl Hobbs, King's College London, United Kingdom

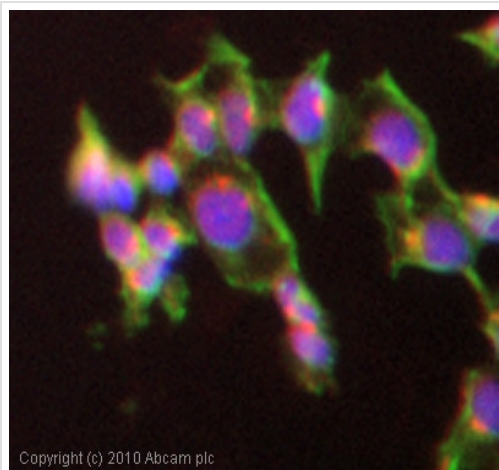
Rabbit polyclonal to Drebrin (ab11068) used in IHC (Formalin/PFA-fixed paraffin-embedded sections; Standard stABCpx-DAB detection). ab11068 detecting Drebrin protein on Rat spinal cord E16 embryo sections fixed in formaldehyde. Antigen retrieval step: Heat mediated. 1% BSA as blocking agent for 10 mins at RT. Ab11068 was used at a dilution of 1/2500 incubated for 16 hours. Secondary Antibody is biotin labeled anti rabbit IgG (1/300). Drebrin positivity conformed to published localisation: essentially, many non-neuronal developing tissues were positive, eg: skeletal primary myotubes. This picture is of spinal cord floor plate region (x20). Nuclei were counterstained using Mayer's Haemalum.



Immunocytochemistry/ Immunofluorescence - Anti-Drebrin antibody (ab11068)

This image is a courtesy of Anonymous Abreview

ab11068 staining Drebrin in mouse COR-1 cells by Immunocytochemistry/Immunofluorescence. Cells were fixed with paraformaldehyde, permeabilized with Triton x100 and blocking with 2% BSA was done at 25°C for 15 minutes. Samples were incubated with primary antibody (1/100: in 1% BSA, 0.25% gelatin in PBS) for 3 hours at 25°C. An Alexa Fluor®488-conjugated goat polyclonal to rabbit IgG was used at dilution at 1/200 as secondary antibody.



ICC/IF image of ab11068 stained Hek293 cells. The cells were 4% formaldehyde fixed (10 min) and then incubated in 1%BSA / 10% normal goat serum / 0.3M glycine in 0.1% PBS-Tween for 1h to permeabilise the cells and block non-specific protein-protein interactions. The cells were then incubated with the antibody (ab11068, 1µg/ml) overnight at +4°C. The secondary antibody (green) was Alexa Fluor® 488 goat anti-rabbit IgG (H+L) used at a 1/1000 dilution for 1h. Alexa Fluor® 594 WGA was used to label plasma membranes (red) at a 1/200 dilution for 1h. DAPI was used to stain the cell nuclei (blue) at a concentration of 1.43µM.

Immunocytochemistry/ Immunofluorescence - Anti-Drebrin antibody (ab11068)

Please note: All products are "FOR RESEARCH USE ONLY. NOT FOR USE IN DIAGNOSTIC PROCEDURES"

Our Abpromise to you: Quality guaranteed and expert technical support

- Replacement or refund for products not performing as stated on the datasheet
- Valid for 12 months from date of delivery
- Response to your inquiry within 24 hours
- We provide support in Chinese, English, French, German, Japanese and Spanish
- Extensive multi-media technical resources to help you
- We investigate all quality concerns to ensure our products perform to the highest standards

If the product does not perform as described on this datasheet, we will offer a refund or replacement. For full details of the Abpromise, please visit <https://www.abcam.cn/abpromise> or contact our technical team.

Terms and conditions

- Guarantee only valid for products bought direct from Abcam or one of our authorized distributors