

Anti-DPP4 antibody [236.3] ab119346

5 References 5 图像

概述	
产品名称	Anti-DPP4抗体[236.3]
描述	小鼠单克隆抗体[236.3] to DPP4
宿主	Mouse
经测试应用	适用于: ICC/IF, Flow Cyt
种属反应性	与反应: Rat, Human
免疫原	Full length protein corresponding to Rat DPP4. Full length native protein
常规说明	<p>The Life Science industry has been in the grips of a reproducibility crisis for a number of years. Abcam is leading the way in addressing this with our range of recombinant monoclonal antibodies and knockout edited cell lines for gold-standard validation. Please check that this product meets your needs before purchasing.</p> <p>If you have any questions, special requirements or concerns, please send us an inquiry and/or contact our Support team ahead of purchase. Recommended alternatives for this product can be found below, along with publications, customer reviews and Q&amp;As</p>

性能	
形式	Liquid
存放说明	Shipped at 4°C. Store at -20°C.
存储溶液	Constituent: 99% PBS
纯度	Protein G purified
克隆	单克隆
克隆编号	236.3
同种型	IgG2b
轻链类型	kappa

应用

**The Abpromise guarantee**      **Abpromise™**承诺保证使用ab119346于以下的经测试应用

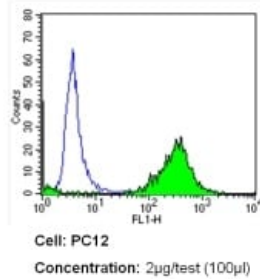
“应用说明”部分 下显示的仅为推荐的起始稀释度;实际最佳的稀释度/浓度应由使用者检定。

应用	Ab评论	说明
ICC/IF		1/20 - 1/200.
Flow Cyt		Use at an assay dependent concentration. <b>ab170192</b> - Mouse monoclonal IgG2b, is suitable for use as an isotype control with this antibody.

## 靶标

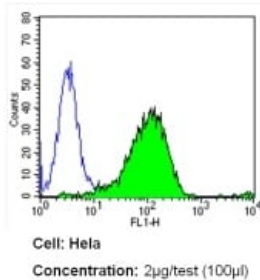
功能	Cell surface glycoprotein receptor involved in the costimulatory signal essential for T-cell receptor (TCR)-mediated T-cell activation. Acts as a positive regulator of T-cell coactivation, by binding at least ADA, CAV1, IGF2R, and PTPRC. Its binding to CAV1 and CARD11 induces T-cell proliferation and NF-kappa-B activation in a T-cell receptor/CD3-dependent manner. Its interaction with ADA also regulates lymphocyte-epithelial cell adhesion. In association with FAP is involved in the pericellular proteolysis of the extracellular matrix (ECM), the migration and invasion of endothelial cells into the ECM. May be involved in the promotion of lymphatic endothelial cells adhesion, migration and tube formation. When overexpressed, enhanced cell proliferation, a process inhibited by GPC3. Acts also as a serine exopeptidase with a dipeptidyl peptidase activity that regulates various physiological processes by cleaving peptides in the circulation, including many chemokines, mitogenic growth factors, neuropeptides and peptide hormones. Removes N-terminal dipeptides sequentially from polypeptides having unsubstituted N-termini provided that the penultimate residue is proline.
组织特异性	Expressed specifically in lymphatic vessels but not in blood vessels in the skin, small intestine, esophagus, ovary, breast and prostate glands. Not detected in lymphatic vessels in the lung, kidney, uterus, liver and stomach (at protein level). Expressed in the poorly differentiated crypt cells of the small intestine as well as in the mature villous cells. Expressed at very low levels in the colon.
序列相似性	Belongs to the peptidase S9B family. DPPIV subfamily.
结构域	The extracellular cysteine-rich region is necessary for association with collagen, dimer formation and optimal dipeptidyl peptidase activity.
翻译后修饰	The soluble form (Dipeptidyl peptidase 4 soluble form also named SDPP) derives from the membrane form (Dipeptidyl peptidase 4 membrane form also named MDPP) by proteolytic processing. N- and O-Glycosylated. Phosphorylated. Mannose 6-phosphate residues in the carbohydrate moiety are necessary for interaction with IGF2R in activated T-cells. Mannose 6-phosphorylation is induced during T-cell activation.
细胞定位	Cell membrane. Apical cell membrane. Cell projection > invadopodium membrane. Cell projection > lamellipodium membrane. Cell junction. Membrane raft. Translocated to the apical membrane through the concerted action of N- and O-Glycans and its association with lipid microdomains containing cholesterol and sphingolipids. Redistributed to membrane rafts in T-cell in an interleukin-12-dependent activation. Its interaction with CAV1 is necessary for its translocation to membrane rafts. Colocalized with PTPRC in membrane rafts. Colocalized with FAP in invadopodia and lamellipodia of migratory activated endothelial cells in collagenous matrix. Colocalized with FAP on endothelial cells of capillary-like microvessels but not large vessels within invasive breast ductal carcinoma. Colocalized with ADA at the cell junction in lymphocyte-epithelial cell adhesion. Colocalized with IGF2R in internalized cytoplasmic vesicles

## 图片



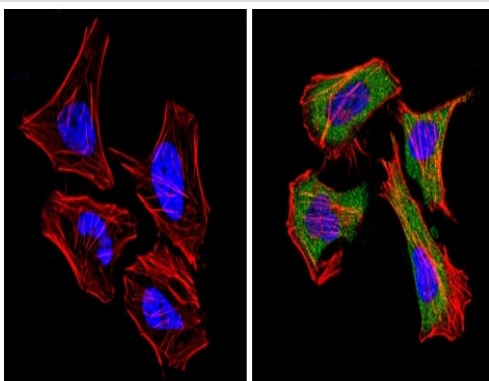
Flow Cytometry - Anti-DPP4 antibody [236.3]  
(ab119346)

Flow cytometry analysis of CD26 in PC12 cells (green) compared to an isotype control (blue). Cells were harvested, adjusted to a concentration of  $1-5 \times 10^6$  cells/ml, fixed with 2% paraformaldehyde and washed with PBS. Cells were blocked with a 2% solution of BSA-PBS for 30 min at room temperature and incubated with a CD26 monoclonal antibody (ab119346) at a dilution of 2 µg/test for 60 min at room temperature. Cells were then incubated for 40 min at room temperature in the dark using a Dylight 488-conjugated secondary antibody and re-suspended in PBS for FACS analysis.



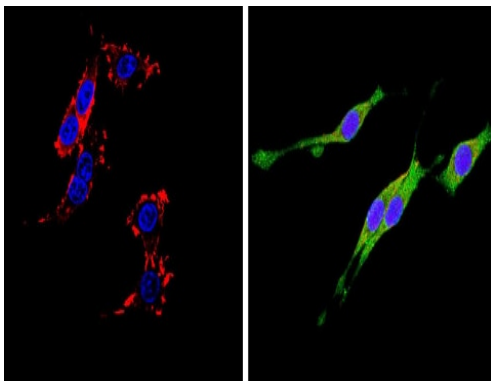
Flow Cytometry - Anti-DPP4 antibody [236.3]  
(ab119346)

Flow cytometry analysis of CD26 in HeLa cells (green) compared to an isotype control (blue). Cells were harvested, adjusted to a concentration of  $1-5 \times 10^6$  cells/ml, fixed with 2% paraformaldehyde and washed with PBS. Cells were blocked with a 2% solution of BSA-PBS for 30 min at room temperature and incubated with a CD26 monoclonal antibody (ab119346) at a dilution of 2 µg/test for 60 min at room temperature. Cells were then incubated for 40 min at room temperature in the dark using a Dylight 488-conjugated secondary antibody and re-suspended in PBS for FACS analysis.



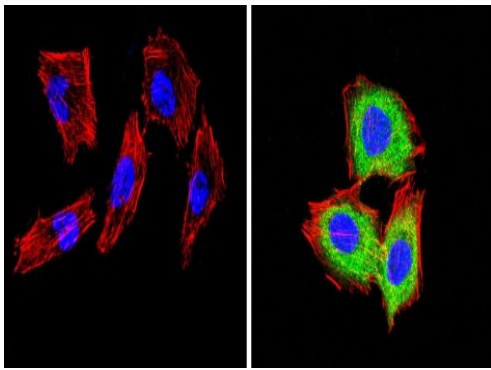
Immunocytochemistry/ Immunofluorescence - Anti-DPP4 antibody [236.3] (ab119346)

ab119346 labelling CD26 (green) in the cytoplasm of HeLa cells (right) compared with a negative control (left) by Immunocytochemistry/Immunofluorescence. Formalin-fixed cells were permeabilized with 0.1% Triton X-100 in TBS for 5-10 minutes and blocked with 3% BSA-PBS for 30 minutes at room temperature. Cells were incubated with the primary antibody (1:20 in 3% BSA-PBS) overnight at 4 °C. A DyLight 488-conjugated Goat anti-mouse IgG (H+L) was used as the secondary antibody. Red (phalloidin) - F-actin, Blue (DAPI) - nuclei. Images were taken at a magnification of 60x.



Immunocytochemistry/ Immunofluorescence - Anti-DPP4 antibody [236.3] (ab119346)

ab119346 labelling CD26 (green) in the cytoplasm of PC12 cells (right) compared with a negative control (left) by Immunocytochemistry/Immunofluorescence. Formalin-fixed cells were permeabilized with 0.1% Triton X-100 in TBS for 5-10 minutes and blocked with 3% BSA-PBS for 30 minutes at room temperature. Cells were incubated with the primary antibody (1:20 in 3% BSA-PBS) overnight at 4 °C. A DyLight 488-conjugated Goat anti-mouse IgG (H+L) was used as the secondary antibody. Red (phalloidin) - F-actin, Blue (DAPI) - nuclei. Images were taken at a magnification of 60x.



Immunocytochemistry/ Immunofluorescence - Anti-DPP4 antibody [236.3] (ab119346)

ab119346 labelling CD26 (green) in the cytoplasm of H-4-II-E cells (right) compared with a negative control (left) by Immunocytochemistry/Immunofluorescence. Formalin-fixed cells were permeabilized with 0.1% Triton X-100 in TBS for 5-10 minutes and blocked with 3% BSA-PBS for 30 minutes at room temperature. Cells were incubated with the primary antibody (1:20 in 3% BSA-PBS) overnight at 4 °C. A DyLight 488-conjugated Goat anti-mouse IgG (H+L) was used as the secondary antibody. Red (phalloidin) - F-actin, Blue (DAPI) - nuclei. Images were taken at a magnification of 60x.

**Please note:** All products are "FOR RESEARCH USE ONLY. NOT FOR USE IN DIAGNOSTIC PROCEDURES"

### Our Abpromise to you: Quality guaranteed and expert technical support

- Replacement or refund for products not performing as stated on the datasheet
- Valid for 12 months from date of delivery
- Response to your inquiry within 24 hours
- We provide support in Chinese, English, French, German, Japanese and Spanish
- Extensive multi-media technical resources to help you
- We investigate all quality concerns to ensure our products perform to the highest standards

If the product does not perform as described on this datasheet, we will offer a refund or replacement. For full details of the Abpromise, please visit <https://www.abcam.cn/abpromise> or contact our technical team.

## Terms and conditions

---

- Guarantee only valid for products bought direct from Abcam or one of our authorized distributors