


Anti-DP1 antibody [EPR4959(2)] ab124678

重组 RabMAb

★★★★★ [3 Abreviews](#) [3 References](#) [3 图像](#)

概述

产品名称	Anti-DP1抗体[EPR4959(2)]
描述	兔单克隆抗体[EPR4959(2)] to DP1
宿主	Rabbit
经测试应用	适用于: Flow Cyt (Intra), WB 不适用于: ICC/IF, IHC-P or IP
种属反应性	与反应: Human 预测可用于: Mouse, Rat 
免疫原	Synthetic peptide within Human DP1 aa 350-450. The exact sequence is proprietary.
阳性对照	Raji cell lysate; HeLa cells.
常规说明	This product is a recombinant monoclonal antibody, which offers several advantages including: <ul style="list-style-type: none"> - High batch-to-batch consistency and reproducibility - Improved sensitivity and specificity - Long-term security of supply - Animal-free production For more information see here . Our RabMAb [®] technology is a patented hybridoma-based technology for making rabbit monoclonal antibodies. For details on our patents, please refer to RabMAb[®] patents .

性能

形式	Liquid
存放说明	Shipped at 4°C. Upon delivery aliquot. Store at -20°C. Avoid freeze / thaw cycle.
存储溶液	pH: 7.2 Preservative: 0.05% Sodium azide Constituents: 40% Glycerol (glycerin, glycerine), 9.85% Tris glycine, 50% Tissue culture supernatant
纯度	Protein A purified
克隆	单克隆
克隆编号	EPR4959(2)

同种型

IgG

应用

The Abpromise guarantee

Abpromise™承诺保证使用ab124678于以下的经测试应用

“应用说明”部分 下显示的仅为推荐的起始稀释度;实际最佳的稀释度/浓度应由使用者检定。

应用	Ab评论	说明
Flow Cyt (Intra)		1/10 - 1/100. ab172730 - Rabbit monoclonal IgG, is suitable for use as an isotype control with this antibody.
WB	★★★★★ (2)	1/10000 - 1/50000. Detects a band of approximately 49 kDa (predicted molecular weight: 45 kDa).

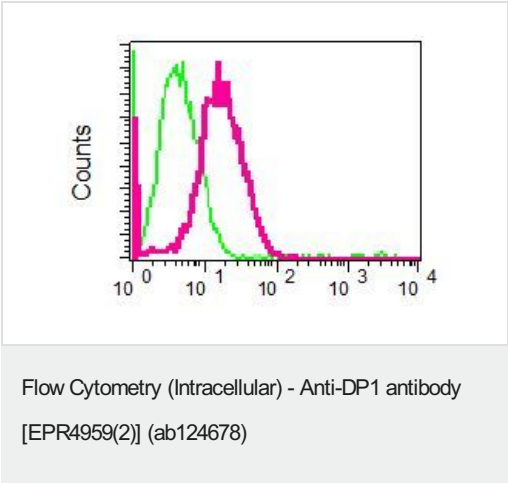
应用说明

Is unsuitable for ICC/IF,IHC-P or IP.

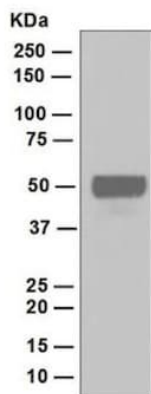
靶标

功能	Can stimulate E2F-dependent transcription. Binds DNA cooperatively with E2F family members through the E2 recognition site, 5'-TTTC[CG]CGC-3', found in the promoter region of a number of genes whose products are involved in cell cycle regulation or in DNA replication. The DP2/E2F complex functions in the control of cell-cycle progression from G1 to S phase. The E2F-1/DP complex appears to mediate both cell proliferation and apoptosis.
组织特异性	Highest levels in muscle. Also expressed in brain, placenta, liver and kidney. Lower levels in lung and pancreas. Not detected in heart.
序列相似性	Belongs to the E2F/DP family.
翻译后修饰	Phosphorylation by E2F-1-bound cyclin A-CDK2, in the S phase, inhibits E2F-mediated DNA binding and transactivation.
细胞定位	Nucleus.

图片



ab124678 at 1/10 dilution staining DP1 in permeabilized HeLa cells by intracellular flow cytometry (red). Rabbit IgG negative control (green).



Anti-DP1 antibody [EPR4959(2)] (ab124678) at 1/10000 dilution +
Raji cell lysate at 10 µg

Secondary

Goat anti-Rabbit HRP at 1/2000 dilution

Predicted band size: 45 kDa

Observed band size: 49 kDa

Western blot - Anti-DP1 antibody [EPR4959(2)]
(ab124678)

Why choose a recombinant antibody?



Research with confidence
Consistent and reproducible results



Long-term and scalable supply
Recombinant technology



Success from the first experiment
Confirmed specificity



Ethical standards compliant
Animal-free production

Anti-DP1 antibody [EPR4959(2)] (ab124678)

Please note: All products are "FOR RESEARCH USE ONLY. NOT FOR USE IN DIAGNOSTIC PROCEDURES"

Our Abpromise to you: Quality guaranteed and expert technical support

- Replacement or refund for products not performing as stated on the datasheet
- Valid for 12 months from date of delivery
- Response to your inquiry within 24 hours
- We provide support in Chinese, English, French, German, Japanese and Spanish
- Extensive multi-media technical resources to help you
- We investigate all quality concerns to ensure our products perform to the highest standards

If the product does not perform as described on this datasheet, we will offer a refund or replacement. For full details of the Abpromise, please visit <https://www.abcam.cn/abpromise> or contact our technical team.

Terms and conditions

- Guarantee only valid for products bought direct from Abcam or one of our authorized distributors