

Anti-Dopamine Transporter antibody [EPR19695] ab184451

重组 RabMAb

12 References **13 图像**

概述

产品名称	Anti-Dopamine Transporter抗体[EPR19695]
描述	兔单克隆抗体[EPR19695] to Dopamine Transporter
宿主	Rabbit
特异性	Human species is recommended based on IHC-P results, we do not guarantee IHC-Fr, WB and IP for human.
经测试应用	适用于: WB, IHC-P, IHC-Fr, IP 不适用于: ICC
种属反应性	与反应: Mouse, Rat, Human
免疫原	Recombinant fragment. This information is proprietary to Abcam and/or its suppliers.
阳性对照	WB: Unboiled Mouse and rat striatum lysates. IHC-P: Mouse and rat striatum tissues, normal human striatum, normal human substantia nigra. IHC-Fr: Mouse brain (Coronal section), rat brain (sagittal section). IP: Mouse striatum whole cell lysate.
常规说明	This product is a recombinant monoclonal antibody, which offers several advantages including: <ul style="list-style-type: none"> - High batch-to-batch consistency and reproducibility - Improved sensitivity and specificity - Long-term security of supply - Animal-free production For more information see here . Our RabMAb [®] technology is a patented hybridoma-based technology for making rabbit monoclonal antibodies. For details on our patents, please refer to RabMAb[®] patents .

性能

形式	Liquid
存放说明	Shipped at 4°C. Store at +4°C short term (1-2 weeks). Upon delivery aliquot. Store at -20°C long term. Avoid freeze / thaw cycle.
存储溶液	pH: 7.2 Preservative: 0.01% Sodium azide Constituents: 59% PBS, 40% Glycerol (glycerin, glycerine), 0.05% BSA
纯度	Protein A purified

克隆	单克隆
克隆编号	EPR19695
同种型	IgG

应用

The Abpromise guarantee **Abpromise™承诺保证使用ab184451于以下的经测试应用**

“应用说明”部分下显示的仅为推荐的起始稀释度；实际最佳的稀释度/浓度应由使用者检定。

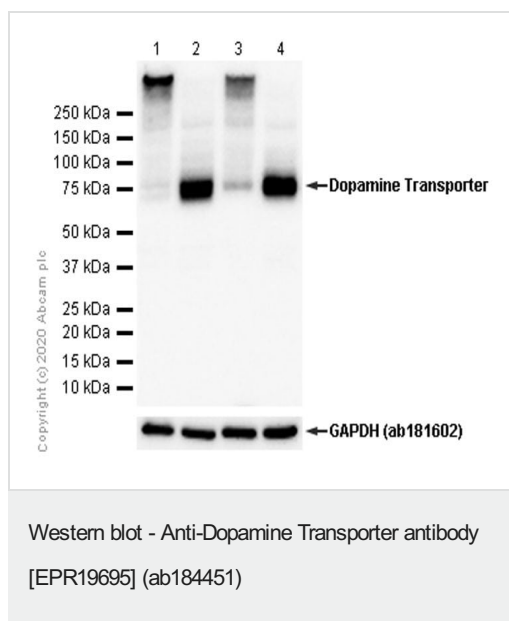
应用	Ab评论	说明
WB		1/1000. Detects a band of approximately 70-85 kDa (predicted molecular weight: 69 kDa).
IHC-P		1/250. Perform heat mediated antigen retrieval with Tris/EDTA buffer pH 9.0 before commencing with IHC staining protocol.
IHC-Fr		1/500.
IP		1/30.

应用说明 Is unsuitable for ICC.

靶标

功能	Amine transporter. Terminates the action of dopamine by its high affinity sodium-dependent reuptake into presynaptic terminals.
疾病相关	Defects in SLC6A3 are the cause of dystonia-parkinsonism infantile (DYTPRI) [MIM:613135]. It is a neurodegenerative disorder characterized by infantile onset of parkinsonism and dystonia. Other neurologic features include global developmental delay, bradikinesia and pyramidal tract signs.
序列相似性	Belongs to the sodium:neurotransmitter symporter (SNF) (TC 2.A.22) family. SLC6A3 subfamily.
细胞定位	Membrane.

图片



All lanes : Anti-Dopamine Transporter antibody [EPR19695] (ab184451) at 1/1000 dilution

Lane 1 : Mouse striatum lysate boiled

Lane 2 : Mouse striatum lysate unboiled

Lane 3 : Rat striatum lysate boiled

Lane 4 : Rat striatum lysate unboiled

Lysates/proteins at 20 µg per lane.

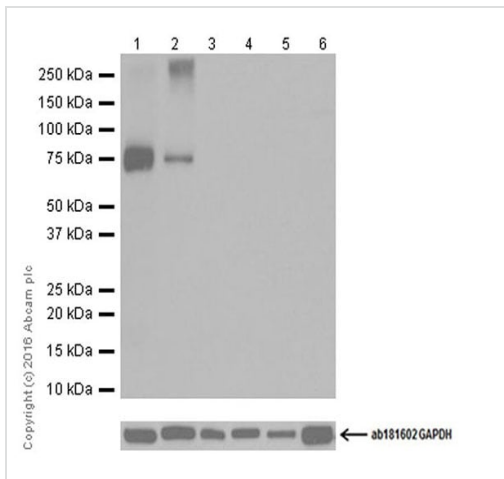
Secondary

All lanes : Goat Anti-Rabbit IgG H&L (HRP) ([ab97051](#)) at 1/20000 dilution

Predicted band size: 69 kDa

We recommend not to boil the samples after lysis to get desired WB results.

ab181602 was used as a GAPDH loading control.



Western blot - Anti-Dopamine Transporter antibody [EPR19695] (ab184451)

All lanes : Anti-Dopamine Transporter antibody [EPR19695] (ab184451) at 1/1000 dilution

Lane 1 : Mouse striatum lysate

Lane 2 : Rat striatum lysate

Lane 3 : Mouse kidney lysate

Lane 4 : Rat liver lysate

Lane 5 : Neuro-2a (Mouse neuroblastoma cell line) whole cell lysate

Lane 6 : C6 (Rat glial tumor cell line) whole cell lysate

Lysates/proteins at 20 µg per lane.

Secondary

All lanes : Goat Anti-Rabbit IgG H&L (HRP) (**ab97051**) at 1/100000 dilution

Predicted band size: 69 kDa

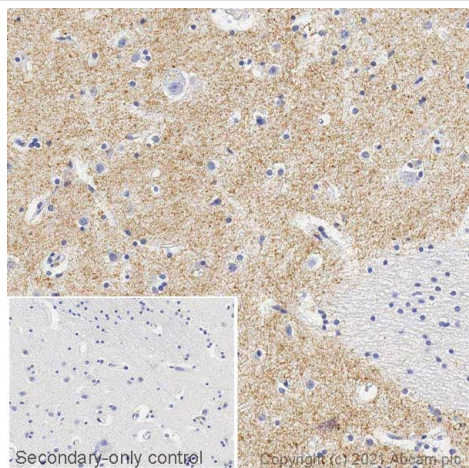
Observed band size: 70-85 kDa

Exposure time: 3 minutes

Blocking/Dilution buffer: 5% NFDM/TBST.

ab181602 was used as GAPDH loading control.

Dopamine transporters are distributed widely across the brain in regions with high dopaminergic activity, such as the striatum and substantia nigra (PMID:1765147), so non-related tissues and cells were chosen as negative controls; and DAT is a glycoprotein with molecular weight of 70-85KD (PMID:25356398, PMID: 20643191).



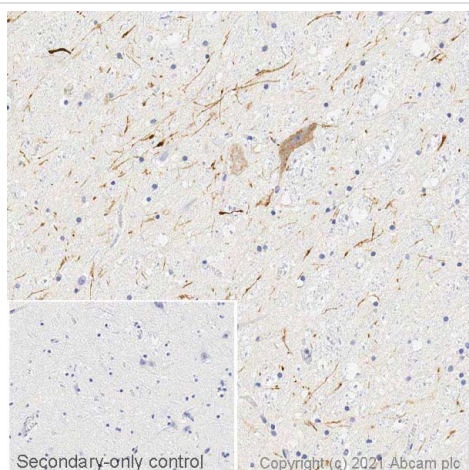
Immunohistochemistry (Formalin/PFA-fixed paraffin-embedded sections) - Anti-Dopamine Transporter antibody [EPR19695] (ab184451)

IHC image of Dopamine Transporter staining in a section of formalin fixed paraffin embedded normal human striatum* performed on a Leica BOND™. The section was pre-treated using heat mediated antigen retrieval with sodium citrate buffer (pH6, epitope retrieval solution 1) for 20mins. The section was fixed in 10% paraformaldehyde (10 min) prior to staining. The section was incubated with ab184451, 5ug/ml, for 15 mins at room temperature and detected using an HRP conjugated compact polymer system. DAB was used as the chromogen.

The section was then counterstained with haematoxylin and mounted with DPX. The inset secondary-only control image is taken from an identical assay without primary antibody.

For other IHC staining systems (automated and non-automated) customers should optimize variable parameters such as antigen retrieval conditions, primary antibody concentration and antibody incubation times.

*Tissue obtained from the Human Research Tissue Bank, supported by the NIHR Cambridge Biomedical Research Centre

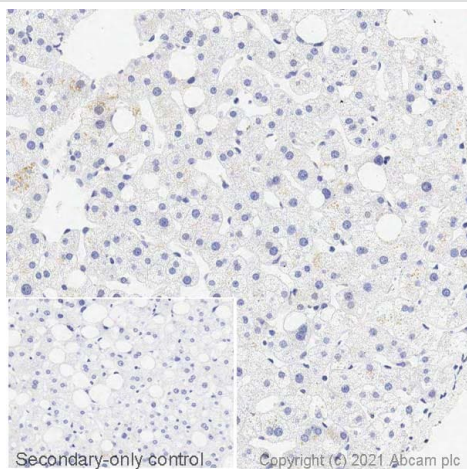


Immunohistochemistry (Formalin/PFA-fixed paraffin-embedded sections) - Anti-Dopamine Transporter antibody [EPR19695] (ab184451)

IHC image of Dopamine Transporter staining in a section of formalin fixed paraffin embedded normal human substantia nigra* performed on a Leica BOND™. The section was pre-treated using heat mediated antigen retrieval with sodium citrate buffer (pH6, epitope retrieval solution 1) for 20mins. The section was incubated with ab184451, 5ug/ml, for 15 mins at room temperature and detected using an HRP conjugated compact polymer system. DAB was used as the chromogen. The section was then counterstained with haematoxylin and mounted with DPX. The inset secondary-only control image is taken from an identical assay without primary antibody.

For other IHC staining systems (automated and non-automated) customers should optimize variable parameters such as antigen retrieval conditions, primary antibody concentration and antibody incubation times.

*Tissue obtained from the Human Research Tissue Bank, supported by the NIHR Cambridge Biomedical Research Centre

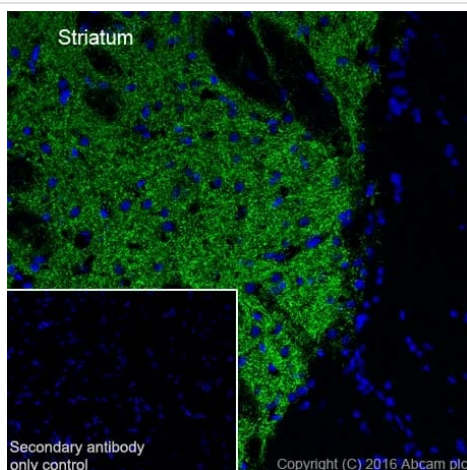


Immunohistochemistry (Formalin/PFA-fixed paraffin-embedded sections) - Anti-Dopamine Transporter antibody [EPR19695] (ab184451)

Negative control image: IHC image of Dopamine Transporter staining in a section of formalin fixed paraffin embedded normal human liver* performed on a Leica BOND™. The section was pre-treated using heat mediated antigen retrieval with sodium citrate buffer (pH6, epitope retrieval solution 1) for 20mins..The section was incubated with ab184451, 5ug/ml, for 15 mins at room temperature and detected using an HRP conjugated compact polymer system. DAB was used as the chromogen. The section was then counterstained with haematoxylin and mounted with DPX. The inset secondary-only control image is taken from an identical assay without primary antibody.

For other IHC staining systems (automated and non-automated) customers should optimize variable parameters such as antigen retrieval conditions, primary antibody concentration and antibody incubation times.

*Tissue obtained from the Human Research Tissue Bank, supported by the NIHR Cambridge Biomedical Research Centre



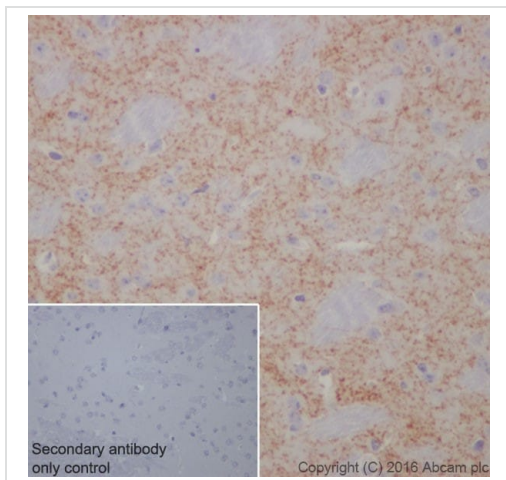
Immunohistochemistry (Frozen sections) - Anti-Dopamine Transporter antibody [EPR19695] (ab184451)

Immunohistochemical analysis of 4% paraformaldehyde-fixed, 0.2% Triton X-100 permeabilized frozen Rat brain (sagittal section) tissue labeling Dopamine Transporter with ab184451 at 1/500 dilution, followed by Goat Anti-Rabbit IgG (Alexa Fluor® 488) ([ab150077](#)) secondary antibody at 1/1000 dilution (green).

The result showed cytoplasmic staining on rat striatum.

The nuclear counterstain is DAPI (blue).

Secondary antibody only control: Used PBS instead of primary antibody, secondary antibody is [ab150077](#) at 1/1000 dilution.



Immunohistochemistry (Formalin/PFA-fixed paraffin-embedded sections) - Anti-Dopamine Transporter antibody [EPR19695] (ab184451)

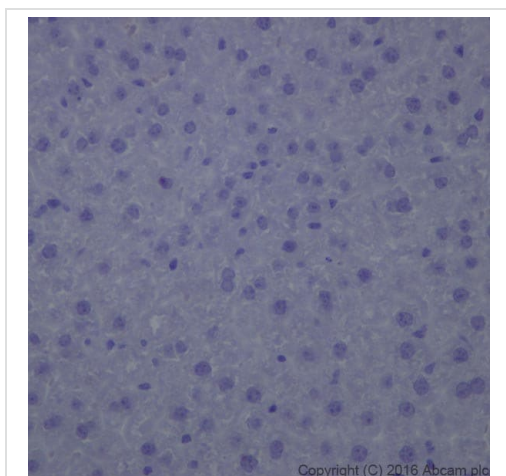
Immunohistochemical analysis of paraffin-embedded Mouse striatum tissue labeling Dopamine Transporter with ab184451 at 1/250 dilution, followed by Goat Anti-Rabbit IgG H&L (HRP) ([ab97051](#)) at 1/500 dilution.

Membrane and cytoplasm staining on mouse striatum is observed.

Counter stained with Hematoxylin.

Secondary antibody only control: Used PBS instead of primary antibody, secondary antibody is [ab97051](#) at 1/500 dilution.

Perform heat mediated antigen retrieval with Tris/EDTA buffer pH 9.0 before commencing with IHC staining protocol.



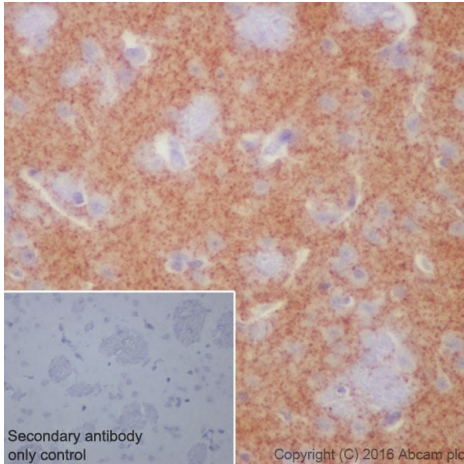
Immunohistochemistry (Formalin/PFA-fixed paraffin-embedded sections) - Anti-Dopamine Transporter antibody [EPR19695] (ab184451)

Immunohistochemical analysis of paraffin-embedded Mouse liver tissue labeling Dopamine Transporter with ab184451 at 1/250 dilution, followed by Goat Anti-Rabbit IgG H&L (HRP) ([ab97051](#)) at 1/500 dilution.

Counter stained with Hematoxylin.

Negative control: Negative staining on mouse liver.

Perform heat mediated antigen retrieval with Tris/EDTA buffer pH 9.0 before commencing with IHC staining protocol.



Immunohistochemistry (Formalin/PFA-fixed paraffin-embedded sections) - Anti-Dopamine Transporter antibody [EPR19695] (ab184451)

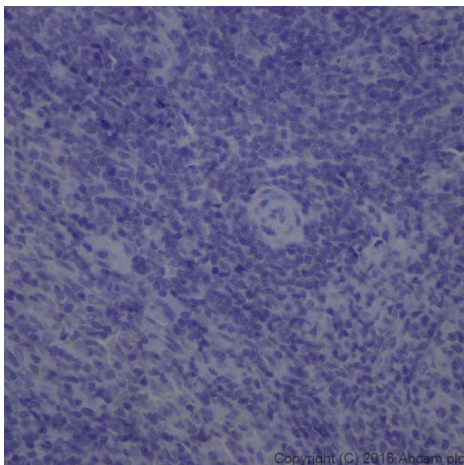
Immunohistochemical analysis of paraffin-embedded Rat striatum tissue labeling Dopamine Transporter with ab184451 at 1/250 dilution, followed by Goat Anti-Rabbit IgG H&L (HRP) ([ab97051](#)) at 1/500 dilution.

Cytoplasm staining on rat striatum is observed.

Counter stained with Hematoxylin.

Secondary antibody only control: Used PBS instead of primary antibody, secondary antibody is [ab97051](#) at 1/500 dilution.

Perform heat mediated antigen retrieval with Tris/EDTA buffer pH 9.0 before commencing with IHC staining protocol.



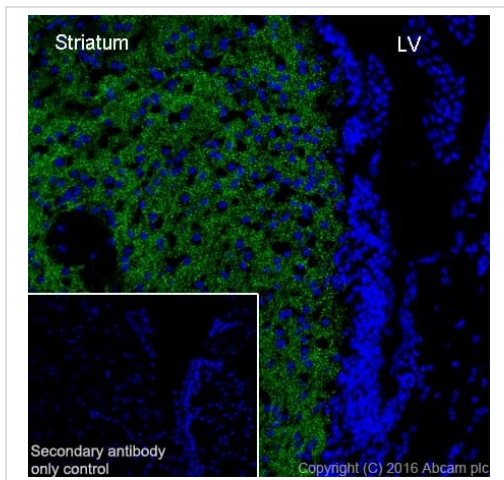
Immunohistochemistry (Formalin/PFA-fixed paraffin-embedded sections) - Anti-Dopamine Transporter antibody [EPR19695] (ab184451)

Immunohistochemical analysis of paraffin-embedded Rat spleen tissue labeling Dopamine Transporter with ab184451 at 1/250 dilution, followed by Goat Anti-Rabbit IgG H&L (HRP) ([ab97051](#)) at 1/500 dilution.

Counter stained with Hematoxylin.

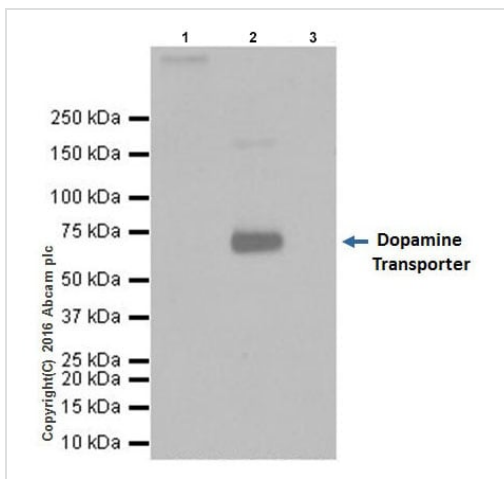
Negative control: Negative staining on rat spleen.

Perform heat mediated antigen retrieval with Tris/EDTA buffer pH 9.0 before commencing with IHC staining protocol.



Immunohistochemistry (Frozen sections) - Anti-Dopamine Transporter antibody [EPR19695] (ab184451)

Immunohistochemical analysis of 4% paraformaldehyde-fixed, 0.2% Triton X-100 permeabilized frozen Mouse brain (Coronal section) tissue labeling Dopamine Transporter with ab184451 at 1/500 dilution, followed by Goat Anti-Rabbit IgG (Alexa Fluor® 488) (**ab150077**) secondary antibody at 1/1000 dilution (green). The result showed cytoplasmic staining on mouse striatum but negative on lateral ventricle (LA). The nuclear counterstain is DAPI (blue). Secondary antibody only control: Used PBS instead of primary antibody, secondary antibody is **ab150077** at 1/1000 dilution.



Immunoprecipitation - Anti-Dopamine Transporter antibody [EPR19695] (ab184451)

Dopamine Transporter was immunoprecipitated from 0.35mg of Mouse striatum whole cell lysate with ab184451 at 1/30 dilution.

Western blot was performed from the immunoprecipitate using ab184451 at 1/1000 dilution.

VeriBlot for IP Detection Reagent (HRP) (**ab131366**), was used for detection at 1/10000 dilution.

Lane 1: Mouse striatum whole cell lysate, 10µg (Input).





Lane 2: ab184451 IP in Mouse striatum whole cell lysate.

Lane 3: Rabbit IgG, monoclonal [EPR25A] - Isotype Control (**ab172730**) instead of ab184451 in Mouse striatum whole cell lysate.

Blocking and dilution buffer and concentration: 5% NFDm/TBST.

Exposure time: 30 seconds.

Why choose a recombinant antibody?

 <p>Research with confidence Consistent and reproducible results</p>	 <p>Long-term and scalable supply Recombinant technology</p>
 <p>Success from the first experiment Confirmed specificity</p>	 <p>Ethical standards compliant Animal-free production</p>

Anti-Dopamine Transporter antibody [EPR19695]
(ab184451)

Please note: All products are "FOR RESEARCH USE ONLY. NOT FOR USE IN DIAGNOSTIC PROCEDURES"

Our Abpromise to you: Quality guaranteed and expert technical support

- Replacement or refund for products not performing as stated on the datasheet
- Valid for 12 months from date of delivery
- Response to your inquiry within 24 hours
- We provide support in Chinese, English, French, German, Japanese and Spanish
- Extensive multi-media technical resources to help you
- We investigate all quality concerns to ensure our products perform to the highest standards

If the product does not perform as described on this datasheet, we will offer a refund or replacement. For full details of the Abpromise, please visit <https://www.abcam.cn/abpromise> or contact our technical team.

Terms and conditions

- Guarantee only valid for products bought direct from Abcam or one of our authorized distributors