

Anti-Dopamine Transporter antibody [6V-23-23] ab128848

★★★★☆ [2 Abreviews](#) [4 References](#) [4 图像](#)

概述

产品名称	Anti-Dopamine Transporter抗体[6V-23-23]
描述	小鼠单克隆抗体[6V-23-23] to Dopamine Transporter
宿主	Mouse
特异性	Not suitable for rat IHC-P.
经测试应用	适用于: WB, IHC-P
种属反应性	与反应: Mouse, Rat 不与反应: Human
免疫原	Synthetic peptide corresponding to Rat Dopamine Transporter (N terminal).
阳性对照	In western blot, this antibody gave a positive signal in mouse and rat forebrain tissue lysates, and in rat brain striatal lysate.
常规说明	<p>This antibody clone is manufactured by Abcam. If you require a custom buffer formulation or conjugation for your experiments, please contact orders@abcam.com.</p> <p>The Life Science industry has been in the grips of a reproducibility crisis for a number of years. Abcam is leading the way in addressing this with our range of recombinant monoclonal antibodies and knockout edited cell lines for gold-standard validation. Please check that this product meets your needs before purchasing.</p> <p>If you have any questions, special requirements or concerns, please send us an inquiry and/or contact our Support team ahead of purchase. Recommended alternatives for this product can be found below, along with publications, customer reviews and Q&As</p>

性能

形式	Liquid
存放说明	Shipped at 4°C. Upon delivery aliquot. Store at -20°C or -80°C. Avoid freeze / thaw cycle.
存储溶液	pH: 7.40 Preservative: 0.02% Sodium azide Constituents: PBS, 6.97% L-Arginine
纯度	Protein G purified
克隆	单克隆
克隆编号	6V-23-23

同种型 IgG1
轻链类型 kappa

应用

The Abpromise guarantee **Abpromise™** 承诺保证使用 ab128848 于以下的经测试应用

“应用说明”部分 下显示的仅为推荐的起始稀释度;实际最佳的稀释度/浓度应由使用者检定。

应用	Ab评论	说明
WB		Use a concentration of 5 µg/ml. Detects a band of approximately 69 kDa (predicted molecular weight: 69 kDa).
IHC-P	★★★★☆ (2)	1/500.

靶标

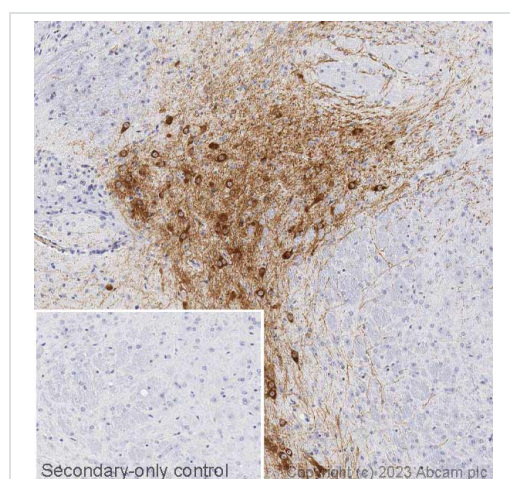
功能 Amine transporter. Terminates the action of dopamine by its high affinity sodium-dependent reuptake into presynaptic terminals.

疾病相关 Defects in SLC6A3 are the cause of dystonia-parkinsonism infantile (DYTPRI) [MIM:613135]. It is a neurodegenerative disorder characterized by infantile onset of parkinsonism and dystonia. Other neurologic features include global developmental delay, bradikinesia and pyramidal tract signs.

序列相似性 Belongs to the sodium:neurotransmitter symporter (SNF) (TC 2.A.22) family. SLC6A3 subfamily.

细胞定位 Membrane.

图片



IHC image of Dopamine Transporter staining in a section of formalin-fixed paraffin-embedded mouse brain performed on a Leica Biosystems BOND® RX instrument. The section was pre-treated using heat mediated antigen retrieval with sodium citrate buffer (pH6, epitope retrieval solution 1) for 20mins. The section was then incubated with ab128848, 5µg/ml, for 15 mins at room temperature and detected using an HRP conjugated compact polymer system. DAB was used as the chromogen. The section was then counterstained with haematoxylin and mounted with DPX. The inset secondary-only control image is taken from an identical assay without primary antibody.

Immunohistochemistry (Formalin/PFA-fixed paraffin-embedded sections) - Anti-Dopamine Transporter antibody [6V-23-23] (ab128848)

For other IHC staining systems (automated and non-automated) customers should optimize variable parameters such as antigen retrieval conditions, primary antibody concentration and antibody incubation times.



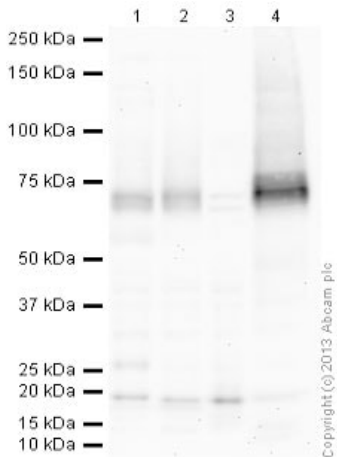
Immunohistochemistry - Anti-Dopamine Transporter antibody [6V-23-23] (ab128848)

Anti-Dopamine Transporter antibody ab128848 was used with Tissue clearing kit – CUBIC ([ab316246](#)) and 3D Tissue Staining Kit – CUBIC ([ab316248](#)) to penetrate, stain and clear a whole mouse brain. White: nuclear staining, Purple: DAT.

Learn more about [tissue clearing kits, reagents, and protocols](#) designed to make it easier to stain whole brains and get more data from each valuable tissue sample.

For a whole mouse brain, we recommend starting with 5 ug of ab128848 and using a Fab fragment secondary antibody with 3.35 µg to create an antibody complex before 3D staining (see protocol for details). Additive A was used during the staining process.

The sample was imaged using a light-sheet microscopy



Western blot - Anti-Dopamine Transporter antibody [6V-23-23] (ab128848)

All lanes : Anti-Dopamine Transporter antibody [6V-23-23] (ab128848) at 5 µg/ml

Lane 1 : Forebrain (Mouse) Tissue Lysate

Lane 2 : Forebrain (Rat) Tissue Lysate

Lane 3 : Cerebellum (Rat) Tissue Lysate

Lane 4 : Brain (Rat) Striatal Tissue Lysate

Lysates/proteins at 20 µg per lane.

Secondary

All lanes : Goat Anti-Mouse IgG H&L (HRP) preadsorbed ([ab97040](#)) at 1/10000 dilution

Developed using the ECL technique.

Performed under reducing conditions.

Predicted band size: 69 kDa

Observed band size: 69 kDa

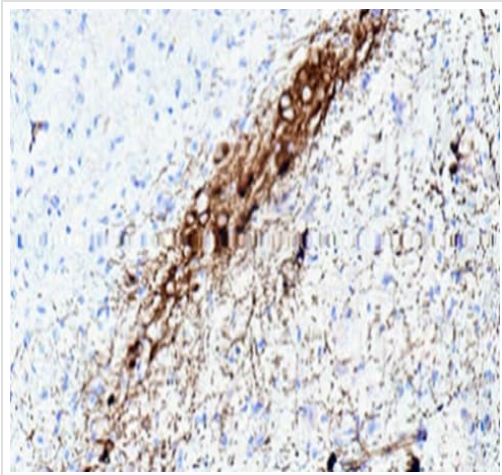
Additional bands at: 18 kDa. We are unsure as to the identity of these extra bands.

Exposure time: 20 minutes

This blot was produced using a 10% Bis-tris gel under the MOPS buffer system. The gel was run at 200V for 50 minutes before being

transferred onto a Nitrocellulose membrane at 30V for 70 minutes. The membrane was then blocked for an hour using 5% Bovine Serum Albumin before being incubated with ab128848 overnight at 4°C. Antibody binding was detected using an anti-mouse antibody conjugated to HRP, and visualised using ECL development solution.

Rat cerebellum (lane 3) was included as a negative control. This tissue does not express dopamine transporter protein.



ab128848 staining of dopamine transporter in mouse brain (substantia nigra) tissue sections by Immunohistochemistry (IHC-P - paraformaldehyde-fixed, paraffin-embedded sections). Heat-mediated antigen retrieval was carried out using citric acid. Samples were incubated with primary antibody (1/500) for two hours at room temperature. A Biotin-conjugated goat anti-mouse IgG polyclonal was used as the secondary antibody.

Immunohistochemistry (Formalin/PFA-fixed paraffin-embedded sections) - Anti-Dopamine Transporter antibody [6V-23-23] (ab128848)

Carl Hobbs (Kings College, London, United Kingdom)

Please note: All products are "FOR RESEARCH USE ONLY. NOT FOR USE IN DIAGNOSTIC PROCEDURES"

Our Abpromise to you: Quality guaranteed and expert technical support

- Replacement or refund for products not performing as stated on the datasheet
- Valid for 12 months from date of delivery
- Response to your inquiry within 24 hours
- We provide support in Chinese, English, French, German, Japanese and Spanish
- Extensive multi-media technical resources to help you
- We investigate all quality concerns to ensure our products perform to the highest standards

If the product does not perform as described on this datasheet, we will offer a refund or replacement. For full details of the Abpromise, please visit <https://www.abcam.cn/abpromise> or contact our technical team.

Terms and conditions

- Guarantee only valid for products bought direct from Abcam or one of our authorized distributors